

The background of the advertisement shows a blurred scene of medical professionals in a control room. A woman in the foreground wears a blue hairnet and scrubs, looking at a computer monitor. Another person is visible in the background, also working at a computer. The setting appears to be a modern medical facility with large windows and professional lighting.

PHILIPS

Xper Information
Management

Connected

cardiology across your enterprise
with the interventional module of IntelliSpace Cardiovascular

A healthcare professional, likely a nurse or technician, is shown in profile, wearing blue scrubs and a blue hairnet. She is seated at a desk in a clinical setting, looking at two computer monitors. The monitor on the left displays a grid of data, possibly vital signs or patient information. The monitor on the right shows a software interface with various fields and buttons. Her hands are on a keyboard and a mouse. The background is slightly blurred, showing other medical equipment and a clean, professional environment.

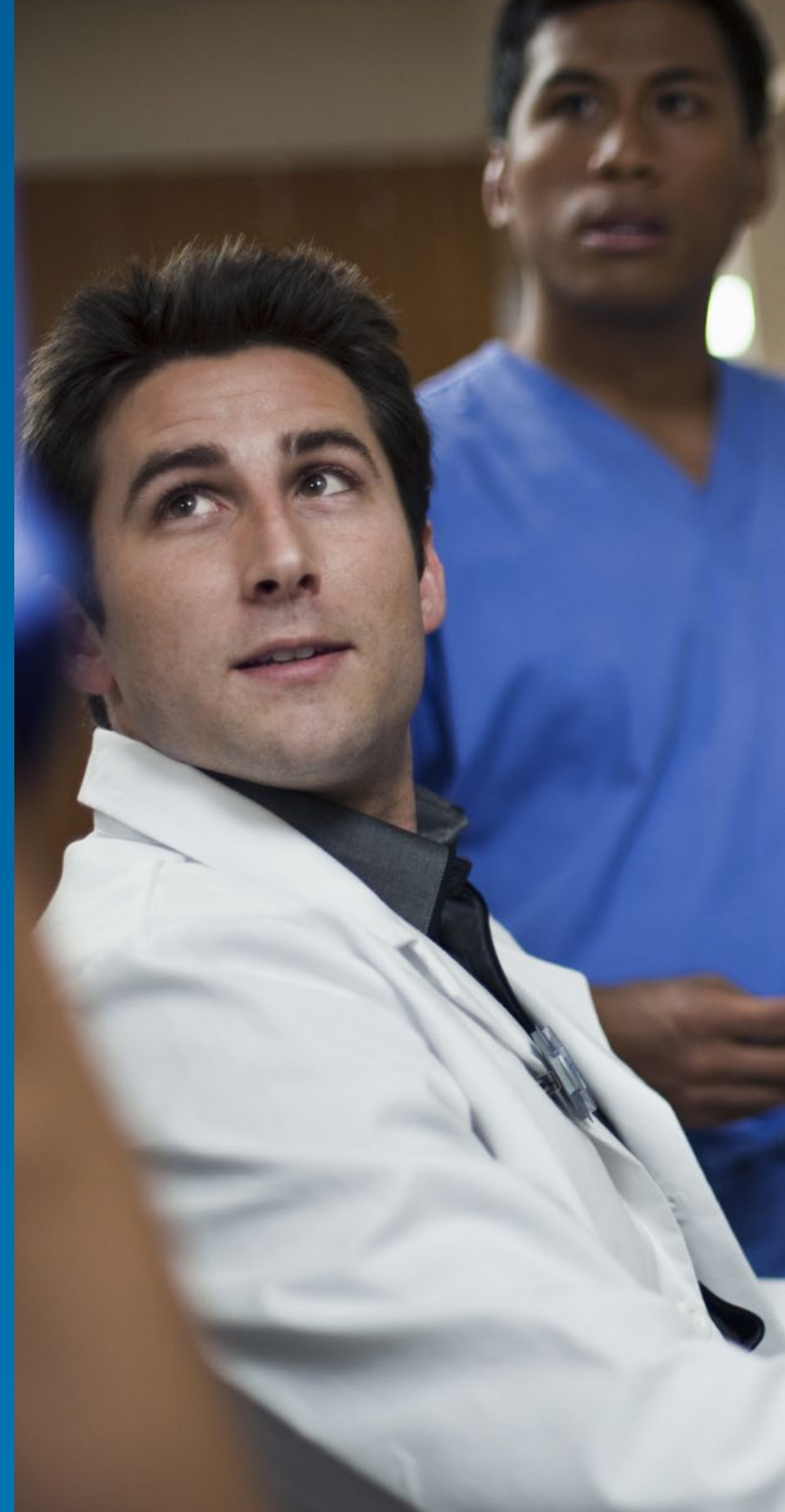
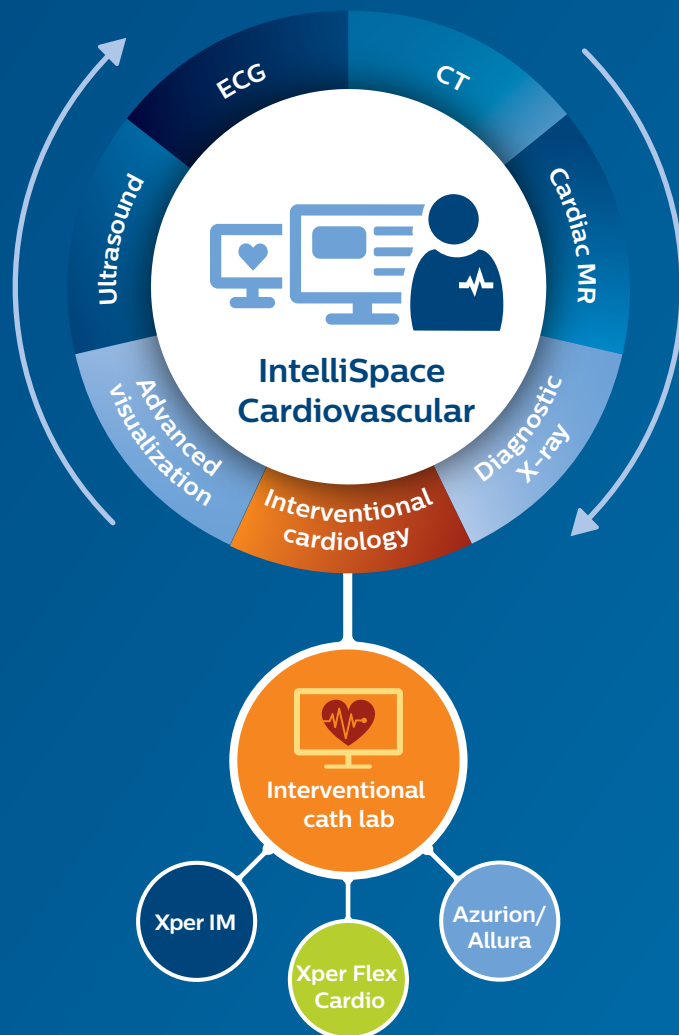
Enhance your cath lab workflow with Philips Xper Information Management

Xper IM is one of the world's leading cath lab information management systems. It helps you create more efficient workflows with physiomonitors and cath lab data management, facilitating collaboration across the cardiovascular teams with less effort on your part.

Xper IM, as the interventional module of IntelliSpace Cardiovascular platform, takes connected cardiology further, together.

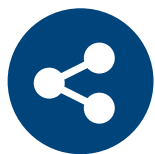
Cath labs are growing in complexity, but **your workflow should not**

Xper Information Management with IntelliSpace Cardiovascular



Empowering caregivers

across the enterprise
to make fast, informed
clinical decisions
**wherever care
is delivered**



Connected

Cath lab data management is becoming more complex, and caregivers need workflows which can connect this information in a convenient way. Through Xper IM, multiple clinical, operational and financial information systems within the hospital are linked to create more efficient workflows, with less effort for the clinician.



Secure

Data security is a high priority for hospitals as their systems transform digitally and hold more and more sensitive patient information. The adoption of secure, industry-standard data exchange technologies enables two-way exchanges of information with external information systems. This helps provide data security and patient privacy.



Intelligent

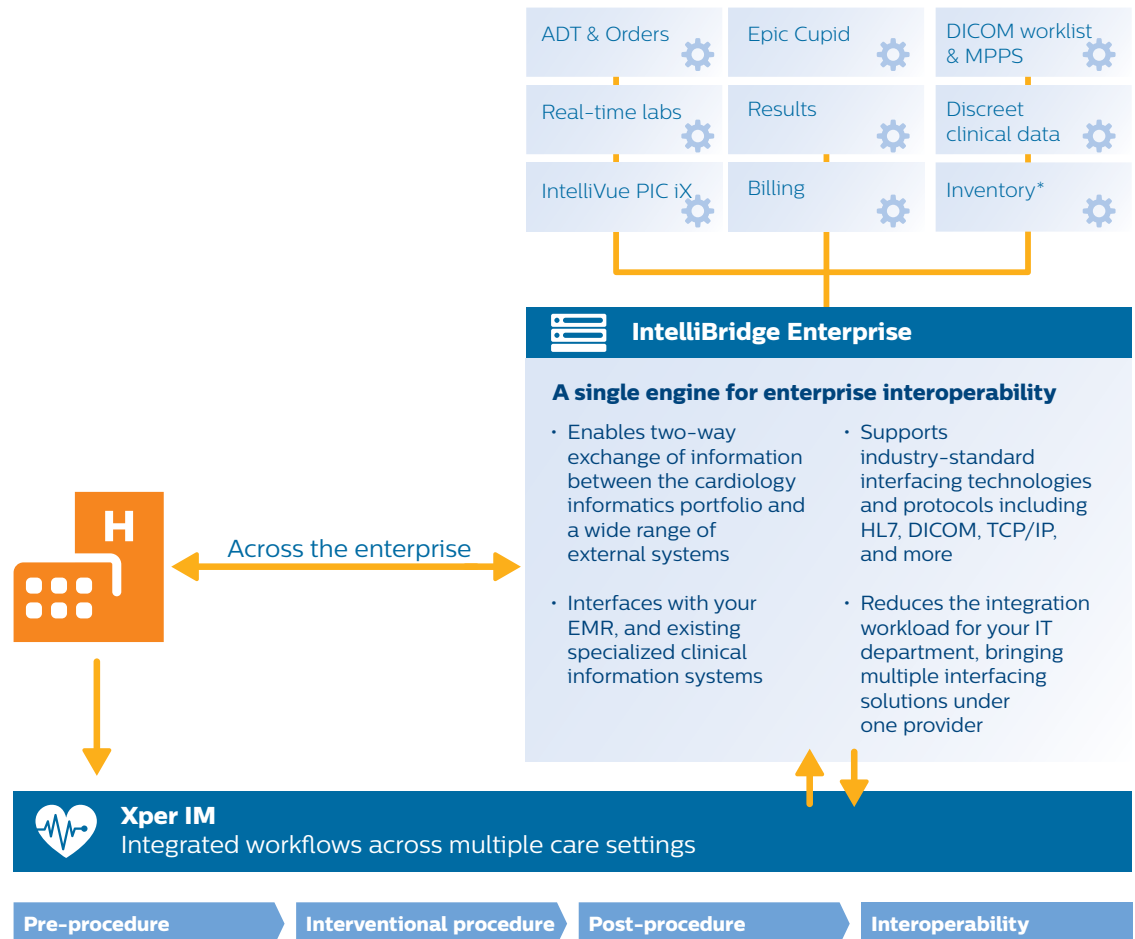
The faster you can make intelligent and informed clinical decisions, the faster that care can be delivered to those who need it most. Our decision support tools drive provider reimbursement and create positive clinical, operational and financial outcomes.





Connected information when and where you need it

Our range of interfaces brings together disparate data across the patient care continuum to empower action in the clinical setting. With these tools, you have convenient access to the information you need, and can devote more time to improving patient outcomes.



* Outbound inventory in IntelliBridge Enterprise 07 for Xper IM



Secure your data exchange

Healthcare organizations are seeing a proliferation of targeted cyber-attacks, ransomware threats and data breaches. In fact, healthcare is one of cybercrime's most targeted sectors, ahead of manufacturing and financial services¹.

An attack can damage a hospital's reputation and bring financial penalties, but it is becoming increasingly clear that such a threat also impacts patient safety and quality of care. Consequently, hospitals are demanding tighter security features from vendors and insisting they follow best practices, adopting industry standard security frameworks in addition to HIPAA privacy rules².

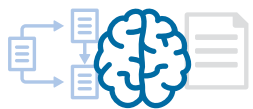
Assurance that your patients' data is safe

To counter these increasingly sophisticated attacks on hospital IT systems, Philips continually invests in software security compliance. Our focus areas include:

- Supporting the latest operating systems, mitigating data security risks posed by older non-supported versions
- Implementing security controls in the end to end software development and deployment life-cycle
- Ensuring that the latest Windows security updates are validated with the system, and communicated as such to enable quick patching against malware
- Ongoing vigilance to adopt applicable security industry best practices

¹ IBM X-Force® Research - 2016 Cyber Security Intelligence Index

² Health Insurance Portability and Accountability Act of 1996



Intelligent decision tools that support your workflow

Having the right technological capabilities allows caregivers to make fast, informed clinical decisions when it matters most. Xper IM is designed to orchestrate efficient workflows, facilitating collaboration across cardiovascular teams to create rich panoramic patient impressions, and driving provider reimbursement with positive clinical and economic outcomes.



A broad and **ever-evolving** Philips cath lab solution

Together with Azurion/Allura systems, dedicated cardiology applications and Volcano devices, Xper IM and IntelliSpace Cardiovascular form a broad and ever-evolving Philips cath lab solution.

System platform configuration and workflow options



Azurion /
AlluraClarity /
Allura Xper



FlexVision Pro



TSM Pro



FlexSpot



2D-QA



DoseAware

Dedicated cardiology applications



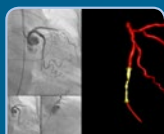
CT TrueView



HeartNavigator



Ultrasound
EPIQ (TEE)



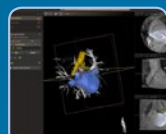
CardiacSwing
/ 3DCA



EchoNavigator



Dynamic Coronary
Roadmap



EP Navigator



iFR Roadmap



StentBoost Live

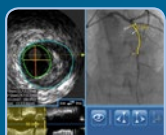
Philips Volcano devices and applications



SyncVision iFR
Co-registration



Verrata Pressure®
Guide Wire

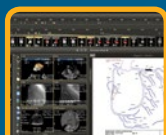


SyncVision IVUS
Co-registration



Eagle Eye®
IVUS Catheter

Integrated tools



IntelliSpace
Cardiovascular



Ultrasound
CX50



Integrated
CORE



Xper IM /
XperFlex Cardio



DoseWise Portal



Expert service to complement our Xper Information Management offering

By teaming up with Philips to take care of your Xper IM solution, you can worry about what really matters – delivering better care, to more people, at lower cost.

The Philips difference*

- Regular software upgrades and education services (onsite and remote)
- Obsolescence protection
- Uptime guarantees for a stable and secure system
- Lifecycle support
- Value-added services, such as clinical workflow consulting

Support for clinical users:

- Access to data when and where it is needed
- Latest clinical tools
- Support for workflow optimization
- Real-time online education for optimal user experience and use of systems

Support for IT managers:

- Reliable remote diagnosis and fast resolution, as well as incident and problem management
- Assurance of improved system uptime
- Access to the latest clinical and technological features
- Compliance with latest healthcare IT standards

Support for hospital management:

- Transparent total cost of ownership
- High-quality data analytics and performance services
- Support for workflow optimization
- Regular updates help maintain system performance

*Check with local representative for detailed offering and investment



Windows is a registered trademark of Microsoft Corporation in the U.S. and other countries.

© 2017 Koninklijke Philips N.V. All rights reserved.
Specifications are subject to change without notice.

www.philips.com

4522 991 26491 * JUL 2017