





| | |
|------------------------|--|
| Product name | WEEE RECYCLING PASSPORT CALIBRATED PMU |
| Identification code(s) | 4535 673 9165.X CALIBRATED PMU RACK 4535 671 1242.X PMU RACK ASSEMBLY 4535 670 7961.X PMU BOARD ASSEMBLY |
| Total weight [kg] | 2.3 kg |
| Manufacturer | Philips Medical Systems Nederland B.V. |
| Address | Veenpluis 4-6, Best |
| Zip code | 5684 PC |
| Country | The Netherlands |
| Electronic info | |

Recycling information

| Special Attention | Items | Location |
|---|-------|----------|
|  | | |
| | | |
| | | |

| Batteries | Items, type | Location |
|---|-------------|----------|
|  | | |
| | | |
| | | |

| Hazardous substances | Items | Location |
|---|---|----------|
|  | Printed Circuit Board Assembly contains: "Lead" | Figure 1 |
| | | |
| | | |

| Fluids and gases | Items | Location |
|---|-------|----------|
|  | | |
| | | |
| | | |

| | | | | | |
|---|--|------------------------|-----------------------|---|---------------------------|
| Name: WEEE RECYCLING PASSPORT CALIBRATED PMU | | 12NC: DMR180235 | | Version: 00 Doc.Date: 2013-08-15 | |
| Author: | | Pag.: 1 of 2 | Group No: 5790 | Section: - | Status: Authorized |

Locations as mentioned in the Passport (Information in pictures)



CALIBRATED PMU RACK

Inside this 2U 19 inch rack a PMU PRINTED CIRCUIT BOARD is present which contains “lead”.

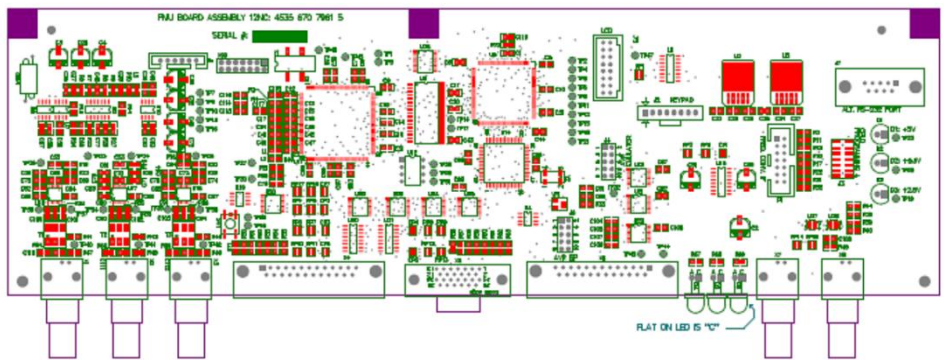


Figure 1: PMU PRINTED CIRCUIT BOARD ASSEMBLY CONTAINS “LEAD”.



| | | | | | |
|--|--|---------------------------|-----------------------|---|---------------------------|
| Name: WEEE RECYCLING PASSPORT CALIBRATED PMU | | 12NC: DMR180235 | | Version: 00 Doc.Date: 2013-08-15 | |
| Author: | | Pag.: 2 of 2 | Group No: 5790 | Section: - | Status: Authorized |