




Philips Healthcare

PageWriter TC-50 Recycling Passport

Product name:	PageWriter TC50 Cardiograph	
Reference Identifier:	860310	
Total weight (in Kg):	13 kg including accessories	
Producer /Manufacturer	Name company:	Philips Medical Systems
	Address:	3000 Minuteman Road, Andover MA
	Zip code:	01810
	Country:	USA

Recycle info	Substances:	Location
Special attention 	<i>Indicate any part of the product that could pose a hazard to the recycler and treatment facility during disassembly such as capacitors with residual energy or spring loaded valves and show location</i>	
	Before you start, disconnect AC/DC power and remove the 1 or 2 Lithium Ion Batteries see page 3.	NA

Batteries	Type:	Location
 To be removed	<i>Indicate all batteries in the product via battery chemistry and show location</i>	
	Lithium Ion battery: 1 or 2 EA per unit. Philips part number: 989803144631	Figure 1

Hazardous	Item	Location
 To be removed	LCD display assembly contains Mercury	Figure 1
	PageWriter TC50 contains 8 circuit boards	Figure 2,3,4
	PageWriter TC50 patient interface module (PIM) contains 4 circuit boards	Figure 5,6

Additional Information as needed

Material content (global)	Weight in Kg	Materials content (continue)	Weight in Kg
Magnesium	0	Battery	1
Aluminum	~0.3	Steel	~1
Plastics etc	~2	All other material types	~8.1
Printed Circuits Boards	~0.6		

Locations as mentioned in the Passport (Pictures information)

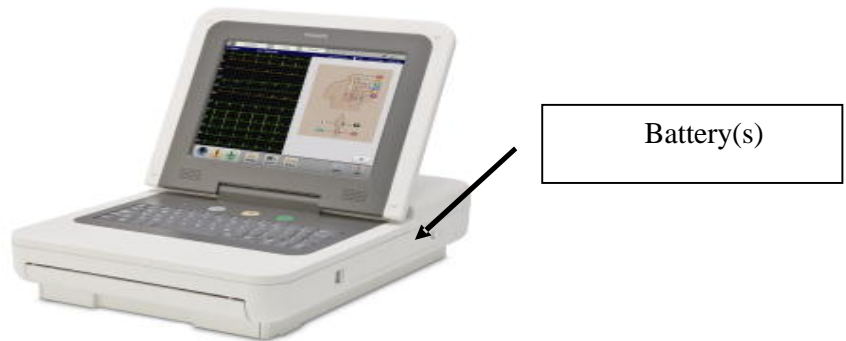


Figure 1 location of display and battery

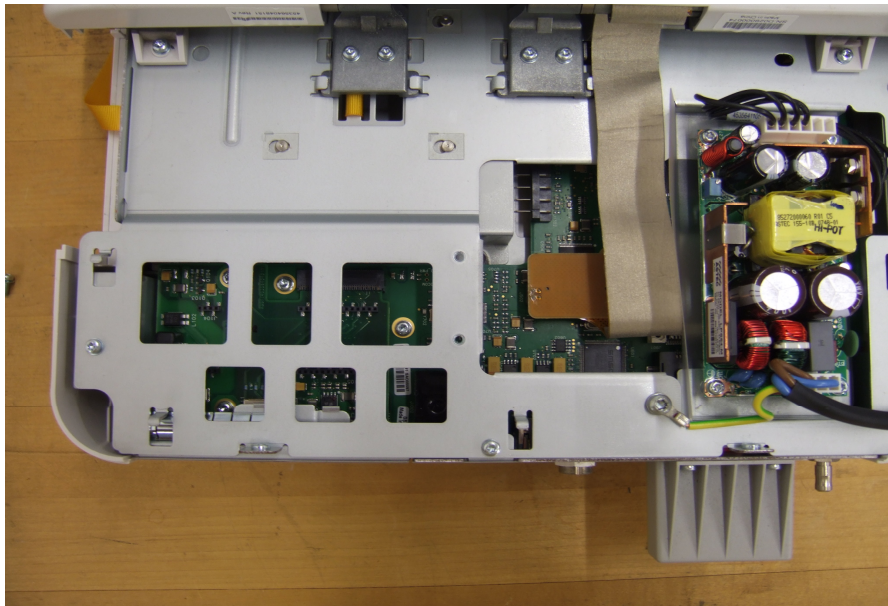


Figure 2 circuit boards/power supply inside Cardiograph



Figure 3 circuit board inside Cardiograph-keyboard PCA



Figure 4 circuit boards inside Cardiograph-display PCAs

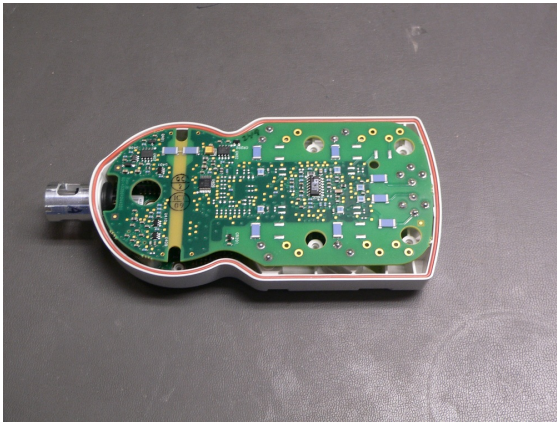


Figure 5 circuit boards inside PIM

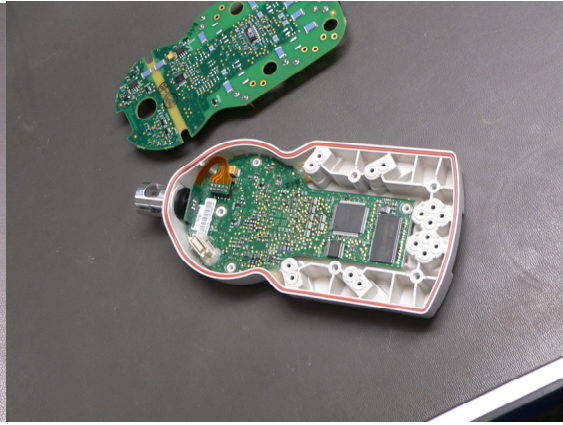


Figure 6 circuit boards inside PIM