
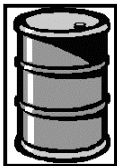




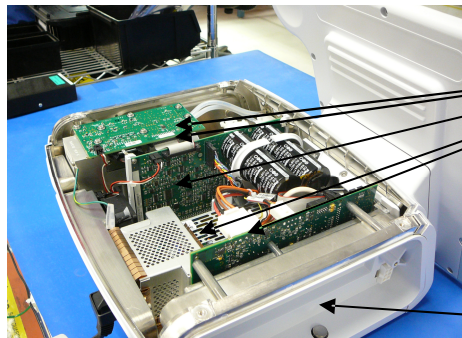
**PHILIPS  
MEDICAL  
SYSTEMS**

V60 Recycling Passport

|                                   |                   |   |
|-----------------------------------|-------------------|---|
| <b>Product name:</b>              | V60               |   |
| <b>Identification code(s)</b>     | 1033544 , 1050405 |   |
| <b>Total weight (in Kg)</b>       | 10.9 kg           |   |
| <b>Producer/<br/>Manufacturer</b> | Name company:     | Respironics California, Inc.            |
|                                   | Address:          | 2271 Cosmos Court<br>Carlsbad, CA 92011 |
|                                   | Zip code:         | 92011                                   |
|                                   | Country:          | USA                                     |

| Recycle Info  | Items:                              | Location        |
|---|-------------------------------------|-----------------|
| <b>Special attention</b><br> |                                     |                 |
|   |                                     |                 |
|   |                                     |                 |
|   |                                     |                 |
|   |                                     |                 |
|   |                                     |                 |
| <b>Fluids / Gases</b><br>   |                                     |                 |
|   |                                     |                 |
|   |                                     |                 |
|   |                                     |                 |
|   |                                     |                 |
|   |                                     |                 |
| <b>Batteries</b><br>       | <b>Type:</b>                        | <b>Location</b> |
|   | Lithium Ion                         | Figure 1 (2)    |
|   | Lithium                             | Figure 2 (3)    |
|   |                                     |                 |
|   |                                     |                 |
|   |                                     |                 |
| <b>To be Removed</b>  |                                     |                 |
|   |                                     |                 |
|   |                                     |                 |
|   |                                     |                 |
|   |                                     |                 |
|   |                                     |                 |
| <b>Hazardous</b><br>       | <b>Substances:</b>                  | <b>Location</b> |
|   | Lead (Pb), Printed Circuit Board x6 | Figure 1 (1)    |
|   | Lead (Pb), Printed Circuit Board x3 | Figure 3 (6)    |
|   | Lead (Pb), Printed Circuit Board x1 | Figure 2 (4)    |
|   |                                     |                 |
|   | Mercury (Hg), LCD                   | Figure 3 (1)    |
| <b>To be Removed</b>  |                                     |                 |
|   |                                     |                 |
|   |                                     |                 |
|   |                                     |                 |

Show locations of materials mentioned on the previous sheet. (Picture information)



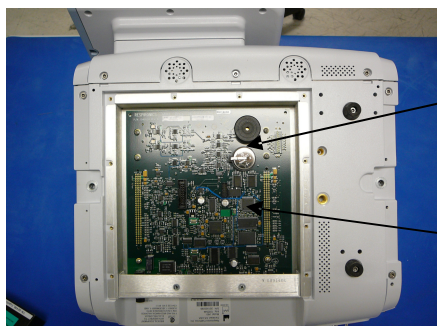
**Figure 1**



1



2



**Figure 2**



3



4



**Figure 3**



5



6

## Recycling Passport Revision History

| Rev | Description    | Date         |
|-----|----------------|--------------|
| 1   | First Passport | May 21, 2009 |

**Recycling Passport Approval Signatures**

Written By

Reviewed By (optional)

Approved By

Approved By

Printed copies are uncontrolled