





# Philips Healthcare

## PageWriter TC-70 Recycling Passport

<b>Product name:</b>	PageWriter TC70 Cardiograph		
<b>Reference Identifier:</b>	860315		
<b>Total weight (in Kg):</b>	13 kg including accessories		
<b>Producer /Manufacturer</b>	Name company:	Philips Medical Systems	
	Address:	3000 Minuteman Road, Andover MA	
	Zip code:	01810	
	Country:	USA	

Recycle info	Substances:	Location
<b>Special attention</b>  	<i>Indicate any part of the product that could pose a hazard to the recycler and treatment facility during disassembly such as capacitors with residual energy or spring loaded valves and show location</i> Before you start, disconnect AC/DC power and remove the 2 Lithium Ion Batteries see page 3.	NA
<b>To be removed</b> 	Type:	Location
	<i>Indicate all batteries in the product via battery chemistry and show location</i> Lithium Ion battery: 2 EA per unit. Philips part number: 989803144631	Figure 1
<b>Hazardous</b> 	Item	Location
	LCD display assembly contains Mercury	Figure 1
	PageWriter TC70 contains 7 circuit boards	Figure 2,3,4
	PageWriter TC70 patient interface module (PIM) contains 4 circuit boards	Figure 5,6

### Additional Information as needed

Material content (global)	Weight in Kg	Materials content (continue)	Weight in Kg
Magnesium	0	Battery	1
Aluminum	~0.3	Steel	~1
Plastics etc	~2	All other material types	~8.1
Printed Circuits Boards	~0.6		

**Locations as mentioned in the Passport (Pictures information)**



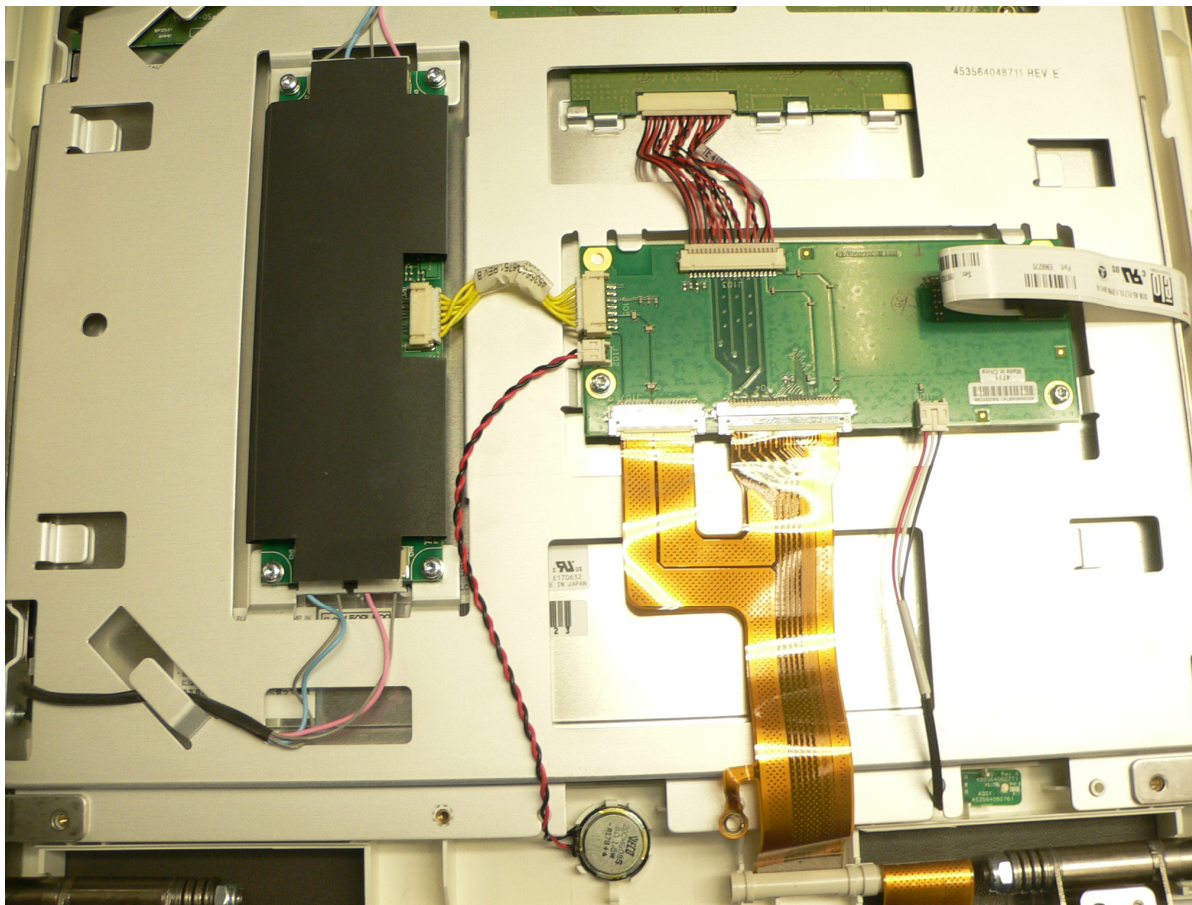
**Figure 1 location of display and battery**



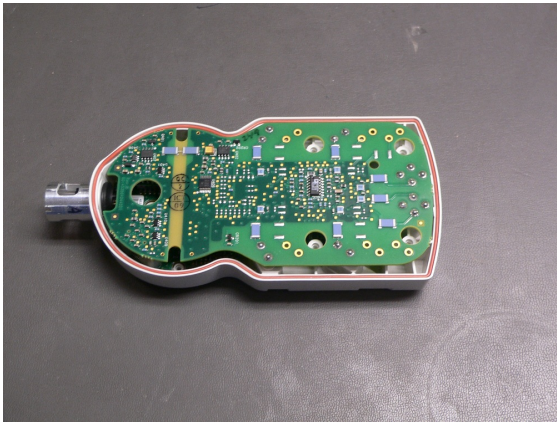
**Figure 2 circuit boards inside Cardiograph**



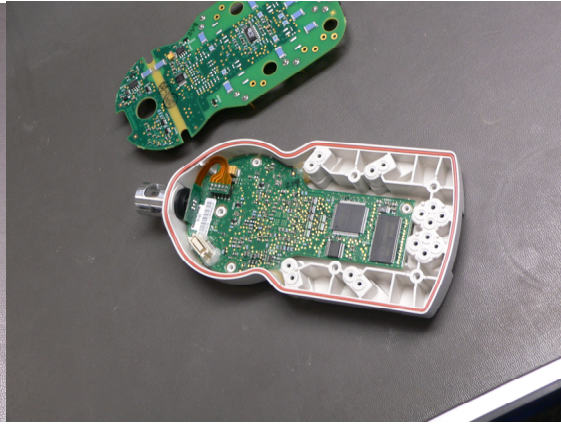
**Figure3** circuit boards inside Cardiograph-keyboard PCA



**Figure 4** circuit boards inside Cardiograph-display PCAs



**Figure 5** circuit boards inside PIM



**Figure 6** circuit boards inside PIM