
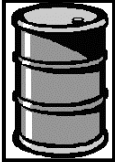
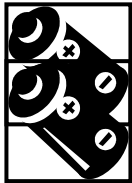



**PHILIPS
MEDICAL
SYSTEMS**

WEEE Directive: Recycling Passport

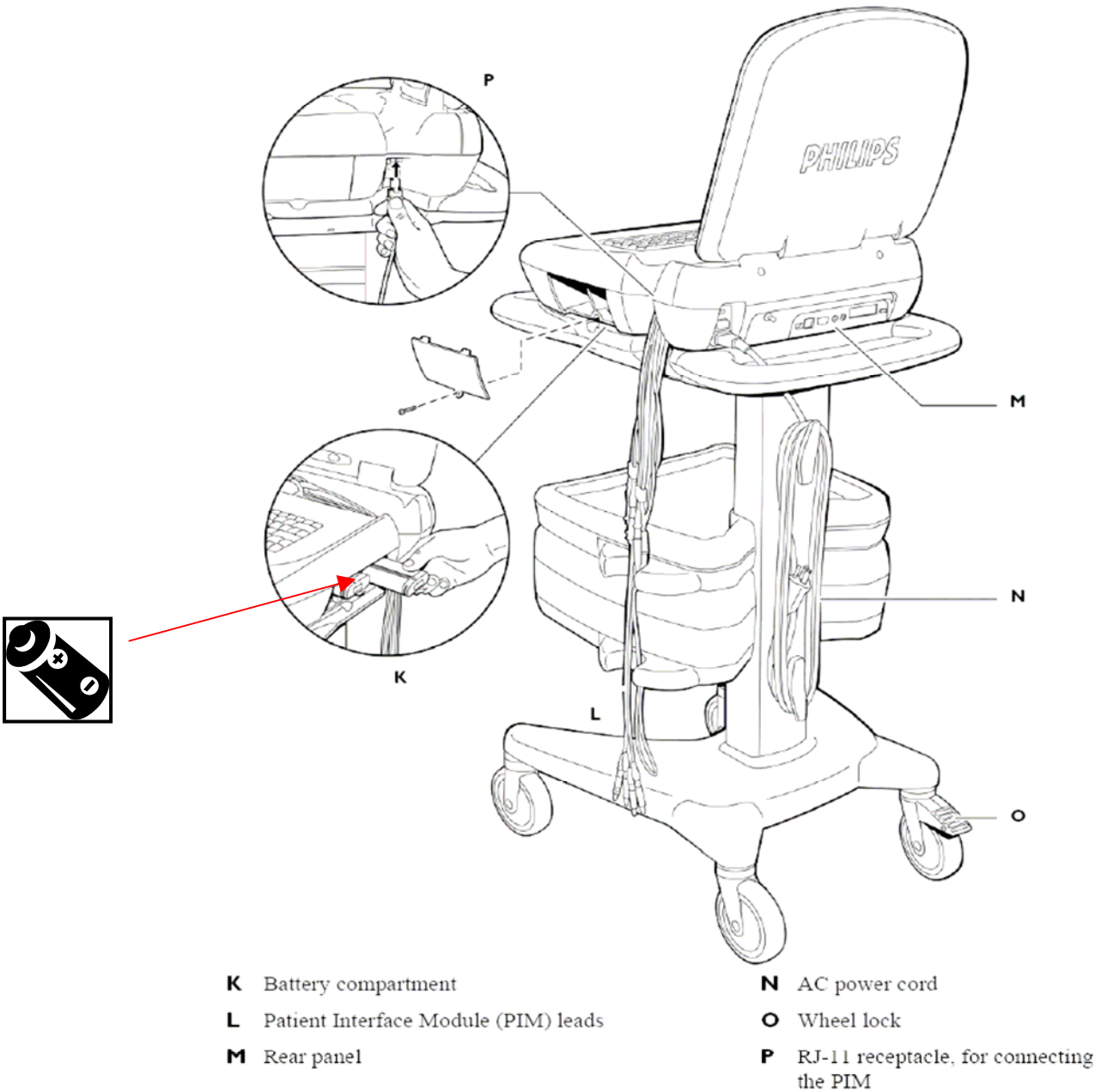
M5000-90351
Page 1 of 7
2005 July: Rev A

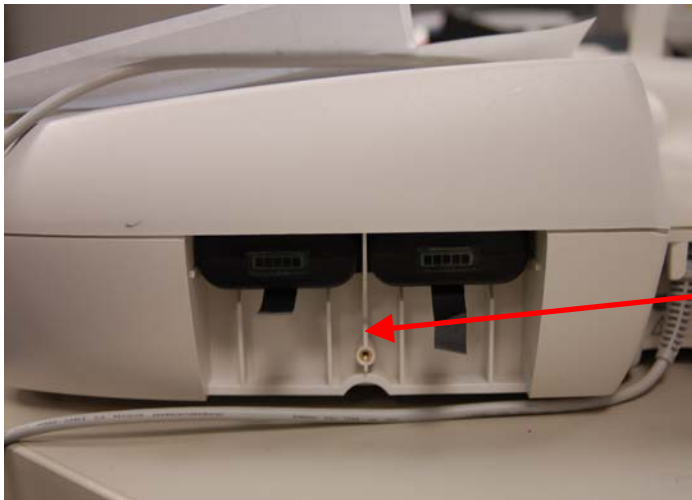
Product name:	PageWriter Touch Cardiograph	
Identification code(s)	860284	
Total weight (in Kg)	13 Kg (with accessories but no trolley), 0.5 Kg. for (Each) Battery	
Producer/ Manufacturer	Name company:	Philips Medical Systems
	Address:	3000 Minuteman Road, Andover Ma
	Zip code:	01810
	Country:	USA

Recycle Info	Items:	Location
Special attention 	Before You Start: Disconnect AC power and remove the 2 Lithium Ion Batteries see pages 2 & 3. Special tools required: Torx Drivers # (10, 15, 25) It is recommended that the PW Touch Service Manual part # M5000-90200 be obtained to facilitate disassembly.	N/A
Fluids / Gases 	Items: None	N/A
Batteries 	Type: Lithium Ion Battery: 2 EA per unit, Philips part # 989803129131	See page 2
To be Removed		
Hazardous 	Substances: LCD Display Assembly: contains Mercury (Hg) PW Touch contains 7 circuit boards. PW Touch Patient Interface Module (PIM) contains 2 circuit boards.	See pages 3-7 Several places inside cardiograph and PIM
To be Removed		

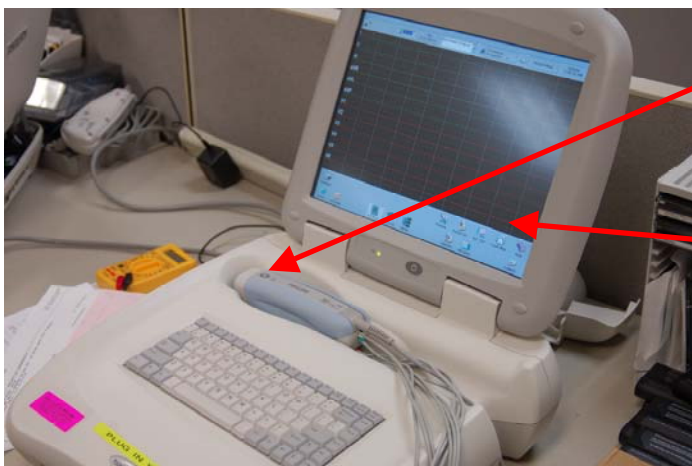
Show locations of materials mentioned on the previous sheet. (Picture information)

Figure 1-2 Cardiograph and Cart (Rear View)





Lithium Ion Battery: 2 per device



Patient Interface Module (PIM)

LCD Display



PW Touch Cardiograph w/ Patient Interface Module (PIM) and LCD Display

Removing the display assembly from the cardiograph is a multi-step procedure. The service manual provides additional details beyond what is provided in the following pictures. The pictures are provide only to separate the display assembly for additional recycling.

Figure 7-21 Removing the Top Cover



Removing screws with
cardiograph on cart



Turning cardiograph upside
down and removing screws

Figure 7-22 Removing the Rear Console

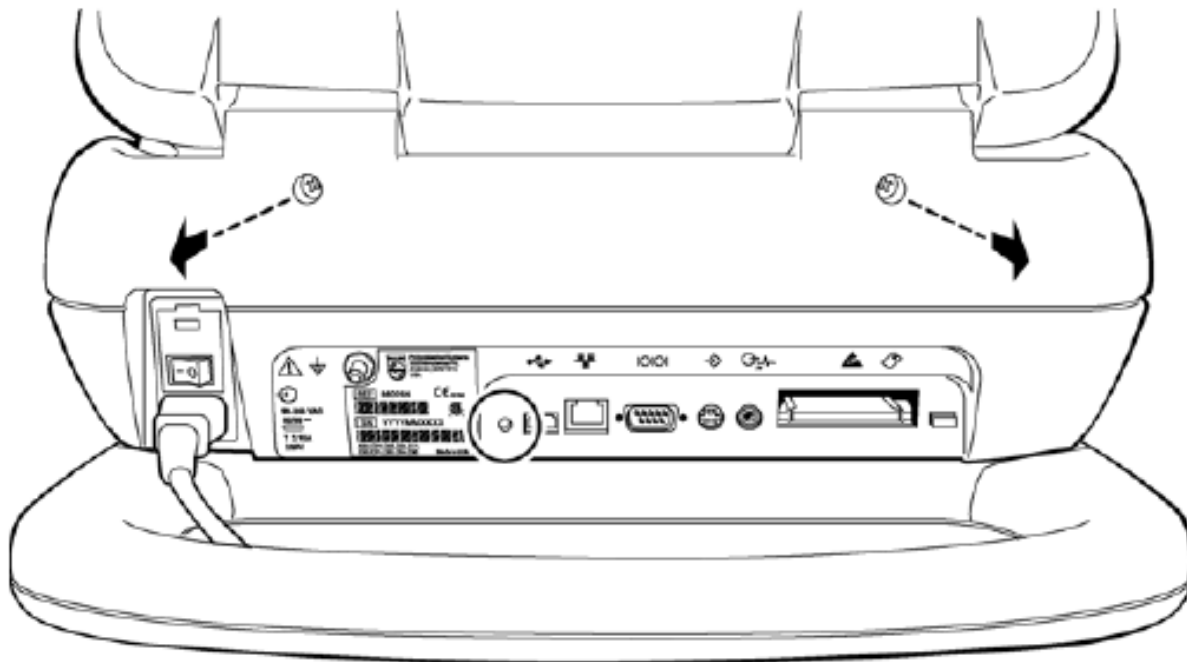


Figure 7-23 Rotating the Display Down



Figure 7-28 Cutting the Tie Wrap



Figure 7-29 Removing Display Cable From Bracket

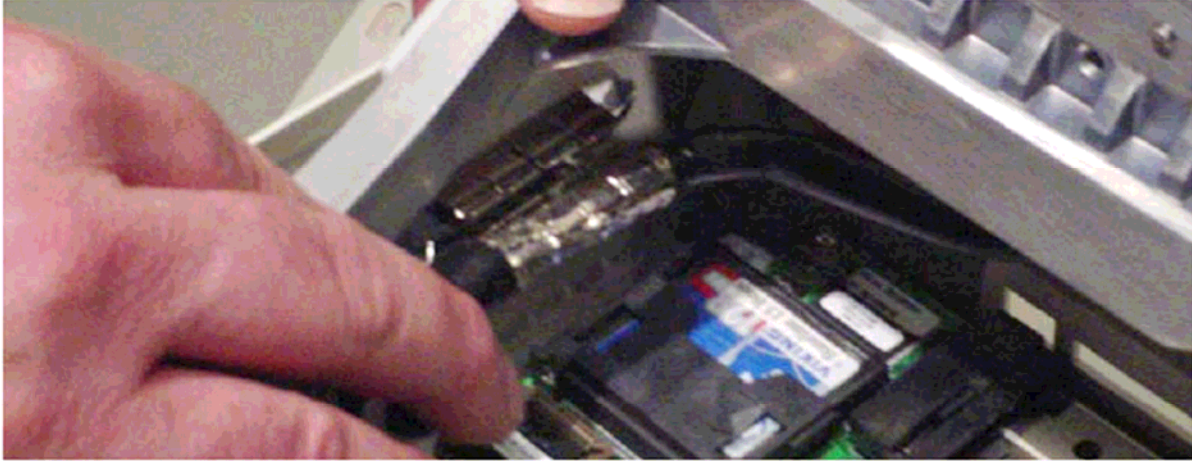


Figure 7-30 Pulling Out the J8 and J9 Connectors

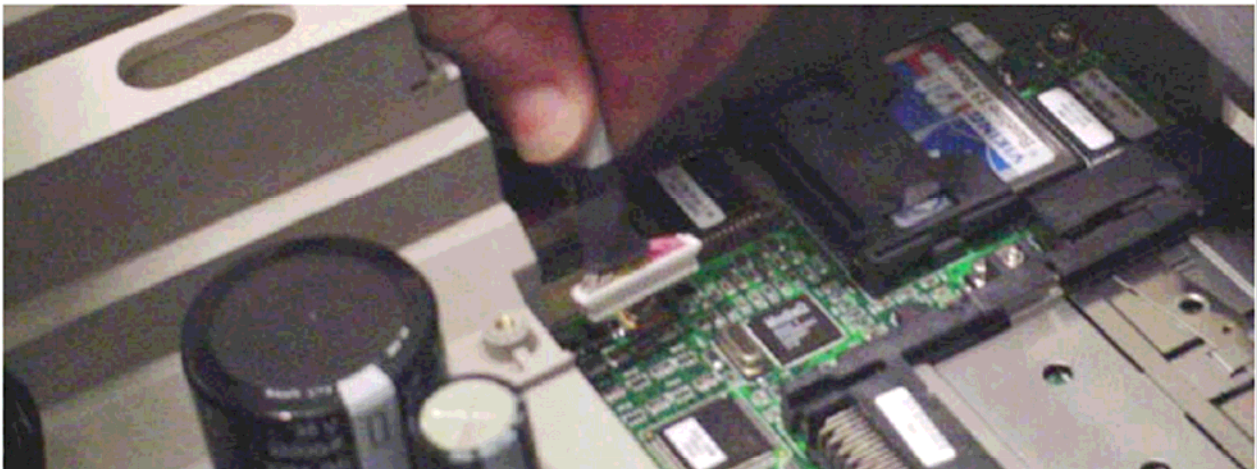


Figure 7-31 Removing the Hinge Screws

