



**PHILIPS**

Ultrasound

Technology Maximizer

# Keeping you **advanced**

Philips premium ultrasound systems are loaded with technology advancements from the start. **Philips Technology Maximizer** helps keep it that way with regular upgrades, adding even more value. The program has delivered regular, reliable technology enhancements to Philips EPIQ and Affiniti ultrasound systems to keep you moving ahead.

# Enhancements customers in the Maximizer program have received



## Delivers core software enhancements

Image quality improvements, improved user interface, new core enhancements.



## Enabling new capabilities

New capabilities enabled by the software upgrade (new capabilities purchased separately).



## Enabling new transducers

Transducers enabled by the software upgrade (transducers purchased separately). Also enhancements to existing purchased transducers.



Actual dates vary between markets

November 2016

April 2017

September 2017

### Release 1.7

### Release 1.8

### Release 2.0



PercuNav 5.3  
MaxVue  
Enhanced Active Native Data  
Single-frame post-processing  
3D workflow improvements  
Remote software download

Remote alert improvements  
OB NT option\*

CIVCO Verza needle guides  
HSDP work for QLAB  
QLAB 10.8 deployment on HISS products  
Unified communications  
System health analytics and diagnostics



ElastQ Imaging on C5-1 transducer  
Hyper 2D

TrueVue  
aReveal  
AI Breast  
Microflow Imaging for  
eL18-4 transducer  
QLAB a2DQ and aCMQ enhancements  
New LA quantification  
3D on X7-2t transducer  
(now available on Affiniti 70)

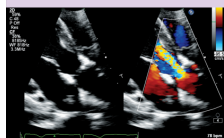
Transducer upgrade (L15-7io transducer)  
TrueVue 2.0 3D on X7-2t transducer\*  
eL18-4 transducer with ElastQ Imaging  
AI Breast  
MicroFlow Imaging  
PercuNav 5.5  
aBiometry Assist  
Hyper 2D  
Q-Station and cardiac AIUS advancements  
Aortic Valve Navigator (AVN)



X8-2t xMATRIX transducer  
X6-1 xMATRIX transducer –  
enhanced image quality  
S8-3 transducer –  
enhanced image quality  
or pediatric cardiac

eL18-4 transducer  
XL14-3 transducer  
S8-3t transducer improvements  
S5-1 transducer improvements

XL14-3 xMATRIX linear transducer



S8-3 transducer  
pediatric cardiac –  
2D Color Compare  
dilated LV



\* New enhancements and transducers are not available on all products or are being added to additional specific systems. Check with your Sales person for specific availability



June 2018

## Release 3.0

New CV user interface  
Coronary sub-mode  
MultiVue  
iSTIC  
Image quality improvements

ElastQ Imaging, linear  
Dynamic HeartModel  
multi-beat quantification  
Fetal echo  
New OLED monitor  
(requires hardware refresh)  
Cardiac TrueVue  
(requires hardware refresh)  
Dynamic Heart Model (DHM)

X6-1 xMATRIX transducer  
eL18-4 ultra-broadband transducer  
S9-2 PureWave pediatric transducer



January 2019

## Release 4.0

XRES Pro image processing  
GI workflow improvements  
Needle visualization, linear  
(eL18-4 transducer)  
Image quality enhancements  
(L12-3, C5-1 transducers)  
Windows 10 OS

CIVCO Verza brackets (X6-1, XL14-3,  
V9-2, mC7-2 transducers)  
CEUS upgrades  
(X6-1 and C5-1 transducers)  
PercuNav upgrades – multimodality  
QR Performance FN  
ElastQ imaging upgrades  
(C5-1 transducer)  
MPR Touch  
FlexVue  
HD MAX (new monitor display)  
AutoSTRAIN

XL14-3 xMATRIX linear transducer\*  
mC7-2 transducer\*  
L12-3 ergo transducer\*  
V9-2 PureWave transducer\*  
TrueVue Essential\*  
Tilt\*



3D fetal surface anatomy with  
the V9-2 PureWave curved array  
transducer and TrueVue rendering

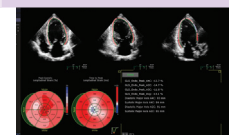
June 2019

## Release 5.0

3D user interface and workflow  
MultiVue upgrades  
Coronary pulsed Doppler

3D Auto RV  
AutoStrain LV  
AutoStrain LA  
AutoStrain RV  
4D Mitral Valve Assessment

XL14-3 xMATRIX linear transducer\*  
S5-1 broadband transducer  
(now available on Affiniti 50)  
X7-2t xMATRIX transducer  
(now available on Affiniti 30)



AutoSTRAIN





**Contact your Philips representative for more information.**

© 2019 Koninklijke Philips N.V. All rights are reserved.  
Philips reserves the right to make changes in specifications and/or to discontinue any product at any time without notice or obligation and will not be liable for any consequences resulting from the use of this publication. Trademarks are the property of Koninklijke Philips N.V. or their respective owners.

Please visit [www.philips.com](http://www.philips.com)

Printed in The Netherlands.  
4522 991 49301 \* MAY 2019