

PHILIPS

Ultrasound

Lumify



Philips Lumify

An ultrasound system
in a transducer.

The first app-based ultrasound solution.



An exciting breakthrough in **point-of-care** imaging technology.

Lumify is an app-based mobile ultrasound system on your compatible Android device



**Bring Philips-quality
imaging directly to
your patients when
it's needed, for faster
diagnosis and treatment.**

With three simple steps you're ready to go.

1



Download
the Lumify app to
your smart device.*

2



Connect
the Lumify transducer
to your compatible
smart device.

3



Scan
with the exceptional
quality of Philips
imaging technology.

* See Lumify portal for the list of compatible smart device options: www.philips.com/lumify-compatible-devices.



Just plug the transducer into the USB port of the compatible smart device and you're ready to begin scanning.

Lumify brings three decades of **imaging expertise** and innovation to point-of-care practitioners.

What if...

you no longer have to trade off **image quality** for **portability and ease of use**?

Lumify offers Philips-quality imaging and flexibility with three transducers to help you make an immediate diagnosis:

- C5-2 broadband curved array
- L12-4 broadband linear array
- S4-1 broadband phased array

Philips Lumify gives you the power to quickly send and share images, notes and diagnostic data via email, DICOM to PACS, a shared network, or a local directory.

Our transducers and mobile app incorporate decades of expertise and innovation in ultrasound imaging to help you make informed decisions.



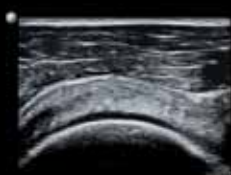
Lumify C5-2 broadband curved array transducer



Lumify L12-4 broadband linear array transducer



Lumify S4-1 broadband phased array transducer



Rotator cuff/shoulder



Carotid



Gallbladder



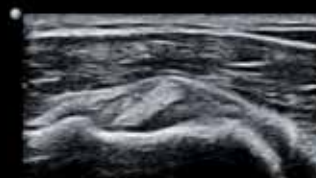
Inferior vena cava



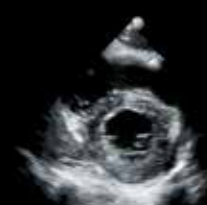
Carotid artery and jugular vein



Kidney cyst



Biceps tendon



Left ventricle short-axis



Lumify combines all the advantages of Philips innovation to bring you a truly mobile ultrasound capability.

With Lumify, high-quality portable ultrasound is available almost anywhere.

Faster diagnosis and treatment

Our transducers deliver exceptional image quality and reliable performance. Lumify also has a simplified interface to perform a scan at the point of care.

High-quality ultrasound imaging is now available on your compatible smart device with Lumify, the mobile app and hardware solution from Philips. Lumify's newest transducer, the S4-1, has presets for cardiac, abdominal with lung, Ob/Gyn, and FAST exams. Our L12-4 transducer supports a variety of clinical applications, including soft tissue, musculoskeletal, lung, and vascular scanning. The C5-2 offers abdominal with lung and gallbladder presets, and Ob/Gyn capabilities.

Bring care to the patients

Lumify allows patients to have an ultrasound scan at the point of care, when needed.

Lumify is an app-based mobile ultrasound on an Android device. Its small, ergonomic and lightweight transducers enable point-of-care practitioners to bring Lumify to the patients. Lumify is a dependable portable ultrasound, as you can scan continuously for 2-4 hours, depending on your device.

Improve access to ultrasound

You can mix and match the number of transducers and smart devices to fit your needs.

When you purchase Philips Lumify, you will receive:

- A Philips Lumify transducer
- Lumify ultrasound app
- Ongoing software upgrades
- Manufacturer's warranty on the hardware
- Access to Philips service and education

For more information about the flexibility, simplicity, and quality of Lumify ultrasound, visit www.philips.com.sg/lumify or call 1800-744-5477.

