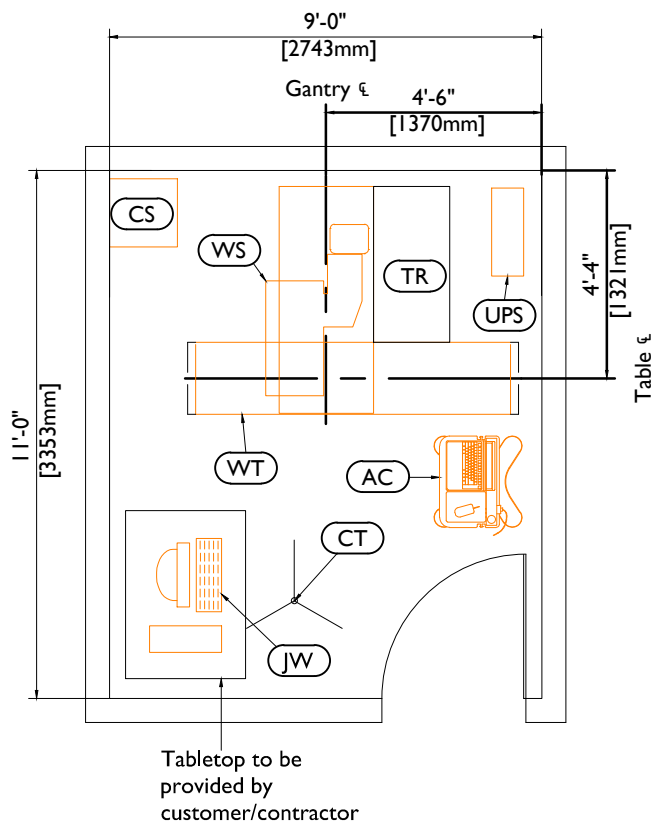


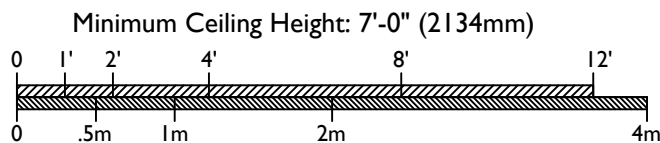
CardioMD III (Supine Only)

Preferred Room Layout

The layout shown below is based upon a typical equipment configuration and should be considered as a general design guideline. Site conditions, application requirements, customer preferences, and/or equipment configuration may significantly impact suite design and equipment layout. It is recommended to request site-specific drawings from a Philips representative early in the design process.



Equipment Layout



Equipment Legend			
A Furnished and installed by Philips B Furnished by customer/contractor and installed by customer/contractor C Installed by customer/contractor D Furnished by Philips and installed by contractor E Existing F Future G Optional item furnished by Philips			
Equipment Designation			
		Description	Weight lbs [kg]
A	WS	CardioMD System (supine)	1797[816]
A	WT	Patient Table	2360[692]
A	AC	Acquisition Terminal (on cart)	66[30]
A	TR	Cable Tray	- [-]
A	CH	Calibration Source Holder Tripod	- [-]
A	CS	Collimator Cabinet	75[35]
G	UPS	2.2 kVA Uninterruptible Power Supply	112[51]
G	JW	Jetstream Workstation	59[27]
			Heat Load Btu/hr [W]

Environmental Requirements for General Equipment Locations

The camera room HVAC system must maintain the temperature between 59°-86° F (15°-30° C) with less than 15° F (8° C) variation per hour. Humidity must be between 45% to 80%. These requirements exist on a 24 hours per day, 7 days per week basis.

Power Requirements

Input Voltage: 120 V - dedicated

Peak/Quiescent Current: 8.8 A / 5.6 A

Frequency: 50 or 60 Hz

Receptacle: NEMA L5-20 (120 V) w/ 2.2 kVA UPS

Remote Service Diagnostics

Medical Imaging equipment to be installed by Philips is equipped with a service diagnostic feature which allows for remote and on-site service diagnostics. To establish this feature, a RJ45 type Ethernet 10/100/1000 Mbit network connector must be installed. Access to customer's network via their remote access server is needed for Remote Service Network (RSN) connectivity. All costs with this feature are the responsibility of the customer.



© Koninklijke Philips Electronics N.V. 2011.
All rights reserved.

Reproduction in whole or in part is
prohibited without prior written consent of
the copyright holder.

Rev. 11.00