



**PHILIPS**

IntelliSpace  
Cardiovascular

Transform the way **you** work.  
And think.

IntelliSpace Cardiovascular image and  
information management solution

# The cardiovascular information **you** need

Your patients' lives are a continuum with multiple cardiovascular incidents happening throughout their lifetimes. Each and every one of your patients has a history of symptoms, tests, diagnoses, and treatments that makes him different than any other. Shouldn't the tools you use to care for these unique individuals reflect this?

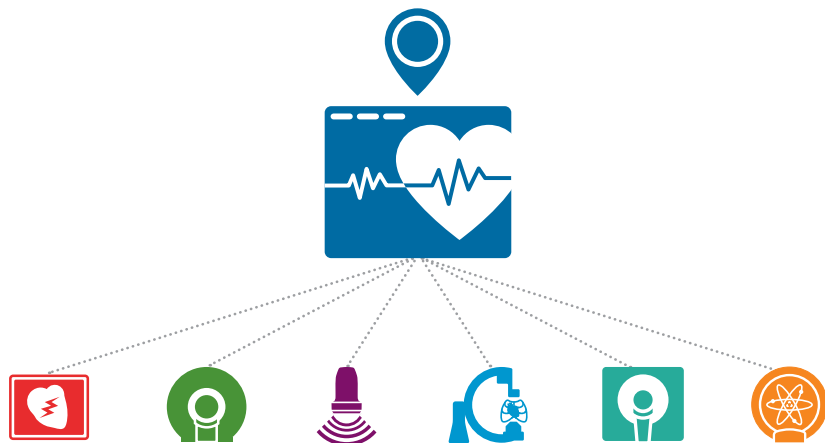


## Cardiovascular care continuum

IntelliSpace Cardiovascular is designed specifically with you in mind to help streamline clinical workflow and improve operational performance across your entire cardiovascular service line.

At the heart of IntelliSpace Cardiovascular is the Workspace, which provides access to relevant cardiovascular images and information anytime, virtually anywhere.

# All in **one** place



## Connected cardiology begins here

The Workspace gives you access to the Cardiology Timeline, which delivers a graphical, panoramic, chronological overview of your patients' cardiovascular care continuum to help you enhance the quality of cardiac care. The Cardiology Timeline also serves as a launch pad to detailed clinical records. You can adjust the Cardiology Timeline to view a portion – or all – of a patient's journey, review the sequence of prior and scheduled exams and procedures, apply smart filters to home in on relevant information, and group-select studies of interest.

You can access reports, images and other information related to each event via a single action in the Cardiology Timeline. In addition, you have the option of launching directly into the clinical applications – all within a patient-study context. You can even access your worklists and enter production environments to conduct quantification and documentation work.



## Many modalities, one location

A robust multi-modality and multi-vendor cardiology image management, analysis, and reporting solution, IntelliSpace Cardiovascular provides direct access to image analysis and reporting data and examinations. Optional plug-ins support echocardiography, cardiovascular X-ray, nuclear medicine, computed tomography, magnetic resonance, electrophysiology and DICOM ECGs.



# One Workspace – **yours**

Are you a cardiologist looking to review your patient's most recent images? A nurse who needs an easy-to-use, intuitive system to quickly learn a patient's history? An administrator interested in mining clinical outcomes data to evaluate performance? Your IntelliSpace Cardiovascular presents the personalized screens and information you need to get your job done – **quickly and efficiently**.



## **Diagnostic Guidance aids in meeting reporting standards**

With the IntelliSpace Cardiovascular Diagnostic Guidance application, you can create rules that define relationships among distinct finding codes, measurements, and other data points. The application operates during echocardiography reporting and warns you of conflicts, inconsistencies, omissions, or patterns that could otherwise go unreported or be misreported, and provides you the ability to review the data before report finalization.



### Focus your workflow

The Workspace offers two layers tailored to your specific workflow: user-centric and patient-centric. The user-centric layer hosts Search and Worklists applets so you can easily start your day. Simply create a customized workflow to filter the information you need, when you need it.

The patient-centric layer is dominated by a graphical, icon-based overview of your patient. From here, you can quickly and easily jump into the clinical application, or directly view images and reports via the Image Viewer and Document Viewer applets.

The Workspace becomes yours from the moment you access your tailored work environment with a single log-in. It offers you a high level of task-driven customization. And its intuitive user interface makes it fast to learn and hard to forget. With multiple available applets you can tailor the Workspace to become yours and behave how you need it, when you need it.

### Take a short cut to work


A number of context-sensitive applets, ranging from Search and Worklists applets to Document Viewer and Image Viewer applets, are designed to streamline workflow. They are readily available based on your personalized, role-based configuration and the chosen workflow.

### Arrange your Workspace

The Workspace also offers an intuitive interface with advanced controls and streamlined navigation that make it easy to intelligently group results, quickly select and drag items, create robust filters, and rapidly configure your preferred Workspace, so that you see information in the way that matters most to you – available anytime, virtually anywhere.

## With IntelliSpace Cardiovascular, you can:

- Analyze, assess, manage, and share your patients' vital cardiovascular information from a single Workspace – anytime, virtually anywhere
- Access previous studies, helping to avoid unnecessary retests
- Provide appropriate clinicians with access to comprehensive cardiovascular data for consultation, analysis, and decision-making
- Access advanced clinical tools to perform comprehensive analysis and reporting, allowing for fast and informed cardiac care treatment decisions
- With images and reports available at everyone's fingertips, from virtually anywhere that they are, you can foster collaboration across your cardiovascular service line – both within your hospital and among your referrers and other healthcare professionals



Given the already complex labyrinth of information systems in the typical healthcare enterprise, we know that any additions need to prove their worth.

# See the **big picture**

IntelliSpace Cardiovascular can be easily incorporated into your existing infrastructure to provide the necessary clinical depth next to your EMR system without adding to the complexity of your operations. Its scalable design allows you to purchase what you need now, and adapt your solution as your needs evolve.



### Detailed operational information

In addition to providing clinicians with the tools needed to enhance care, IntelliSpace Cardiovascular offers access to a wealth of detailed information to help streamline your operations, such as supply utilization and productivity, and outcomes reporting. It also interfaces to other systems and devices within the cardiology department, as well as to HIS and EMR systems that span your enterprise.



### Enhance operational efficiency

IntelliSpace Cardiovascular also offers a suite of tools designed to help you improve productivity. Its data mining tool, Advanced Analytics, provides the information you need to verify that you are operating efficiently. Advanced Analytics uses a single, industry-standard, Microsoft® SQL Server® 2008 R2 Reporting Services tool to access data stored within IntelliSpace Cardiovascular. You can easily generate insightful reports, it can help you to make informed clinical and operational decisions with confidence. Launching the Advanced Analytics tool directly from Internet Explorer® allows fast access to the data you need.



## With IntelliSpace Cardiovascular, you can:

- Configure a single-modality, departmental solution that can grow into a comprehensive multi-modality, enterprise-wide cardiovascular image and information management solution
- Protect your investment with a solution that is interoperable with medical equipment and information systems from a variety of vendors
- Control implementation and maintenance costs through zero footprint installation
- Improve information exchange across your clinical ecosystem



# When and where **you** need it

Our next-generation cardiovascular image and information management solution provides a single point of access anytime, virtually anywhere to a patient-centric repository of comprehensive cardiovascular information that helps to support clinical decision-making, streamline workflow, and reduce costs.

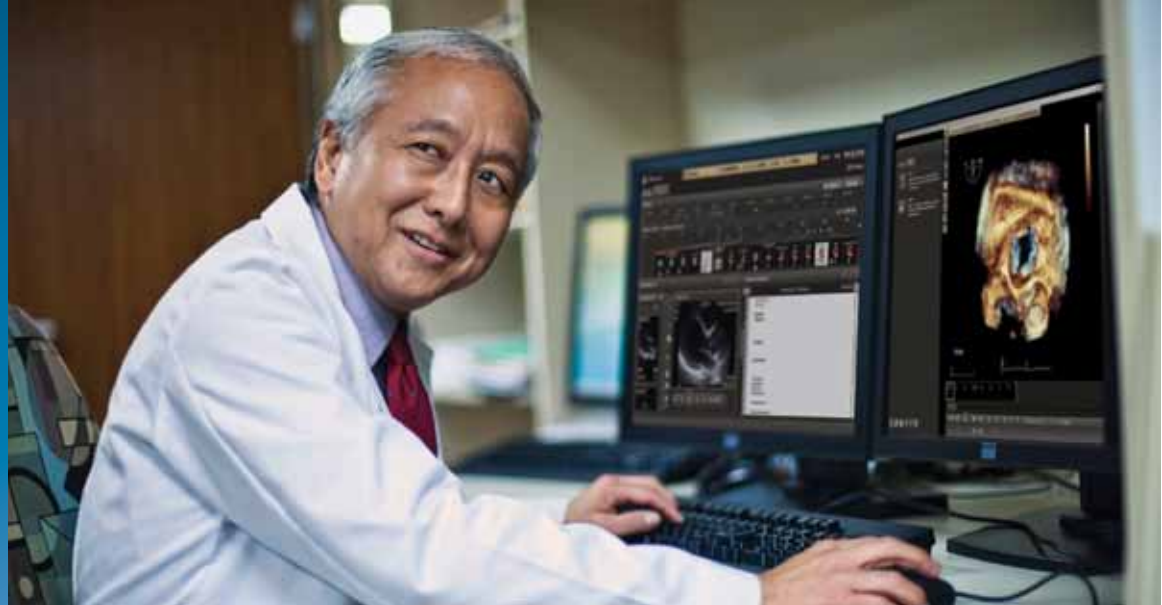


With **IntelliSpace Cardiovascular**, you can:

- Enhance workflow efficiency through Workspace customization, the ability to interact with multiple applets at the same time, and our unique Cardiology Timeline, helping to save time and resources
- Deploy a rich clinical solution within your existing infrastructure
- Streamline implementation with low maintenance requirements and a zero footprint environment
- Provide clinicians with easy access to prior cardiovascular exams to help reduce unnecessary and costly retesting



With IntelliSpace Cardiovascular, you can quickly obtain, analyze, and share rich, consolidated data from a wide variety of departmental systems and applications.



### **Working together**

IntelliSpace Cardiovascular has many options for bringing information where you need it. It interfaces with IntelliBridge Enterprise, which provides a single interoperability solution between clinical and enterprise applications, such as your ADT, EMR, and other specialized clinical information systems. An available web application programming interface (WebAPI) allows you to quickly access ECG, EMR, and other data from within IntelliSpace

Cardiovascular. In addition, you can use the EMR/HIS interface to launch into IntelliSpace Cardiovascular when working in your Enterprise Applications system, and land directly within the patient or procedure context. For those times when important information only exists on paper, you also can convert paper copies to PDF files and import them into IntelliSpace Cardiovascular.

### **Industry-standard data exchange**

The IntelliBridge Enterprise interoperability solution supports industry-standard interfacing technologies and protocols including HL7, DICOM, TCP/IP, and more. So you can count on a two-way exchange of information between the IntelliSpace Cardiovascular portfolio and a wide range of external systems.

A photograph of three medical professionals in a clinical setting. In the foreground, a man in a light green shirt and dark tie is pointing at a laptop screen. Behind him, a woman in a white lab coat is looking at the screen. To the right, another man in a grey suit and red shirt is also looking at the screen. The laptop screen displays a complex data table with multiple columns and rows of text. The background is slightly blurred, showing more of the clinical environment.

# Discover the Philips difference

IntelliSpace Cardiovascular was designed to help you and your organization enhance workflow in disparate cardiology departments and across your entire cardiovascular service line. While advanced technology is critical to achieving this goal, so is Philips passion for cardiovascular excellence and our commitment to helping you meet your clinical and administrative challenges.



For more than 40 years, we've been developing our in-depth knowledge of clinical workflow across the cardiovascular service line – through collaboration with leading healthcare institutions, empirical research, and strategic business acquisitions. Along the way, Philips professionals have amassed considerable expertise in the fields of cardiovascular imaging, clinical decision support, departmental workflow, and information systems. With thousands of clinical information systems deployed worldwide, we've built a reputation as a global leader in cardiology.

We invite you to draw on this knowledge and experience to help build a cardiovascular information solution designed to make a difference.

Philips offers an extensive range of services to help implement, integrate, and configure the IntelliSpace Cardiovascular solution, including project management, application training, report customization, and workflow consulting.

## Unleashing the power of information sharing

We at Philips Healthcare focus on empowering caregivers across the enterprise to make fast, informed clinical decisions wherever care is delivered, through:

### **Intelligent clinical workflows**

Leveraging images and information from disparate clinical systems to create rich clinical summaries and contextual presentations at the point of care

### **Personalized care**

Customizable clinical solutions to elevate the user experience, and tailor clinical guidance, based on best practices and evidence

### **Longitudinal patient care**

Rich panoramic patient impressions, to orchestrate and facilitate collaboration across specialty care teams





Microsoft, SQL Server, and Internet Explorer are either registered trademarks or trademarks of Microsoft Corporation in the United States and/or other countries.

© 2014 Koninklijke Philips N.V. All rights are reserved.

Philips Healthcare reserves the right to make changes in specifications and/or to discontinue any product at any time without notice or obligation and will not be liable for any consequences resulting from the use of this publication.

Please visit [www.philips.com/IntelliSpaceCardiovascular](http://www.philips.com/IntelliSpaceCardiovascular)

Printed in The Netherlands.  
4522 991 05791 \* OCT 2014