

# Setting up SleepMapper using your SD card

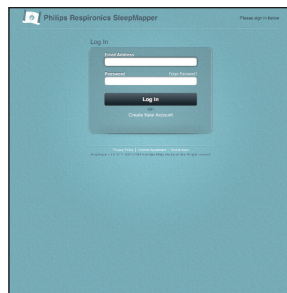
## Installing the Data Card Uploader System

The following step-by-step instructions will help you to properly download your sleep therapy data to SleepMapper using your SD card. Once your data is downloaded, you can view it easily in SleepMapper from the Sleep screen.

### Step 1:

Click “log-in” from the sleepmapper.com screen and enter your log-in information.

\*If you have not created your account, please refer to the How to Get Started brochure and/or video available on sleepmapper.com.



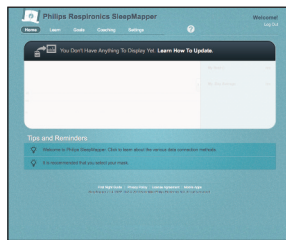
### Step 2:

a: Click “learn how to update.”

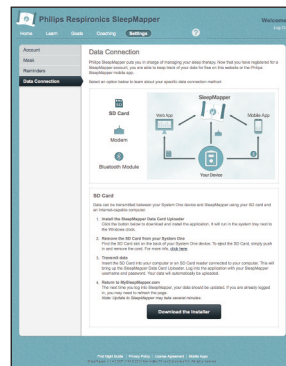
b: Once you have selected the “download the installer” button, you will see: “setup.exe.”

c: Click “save.”

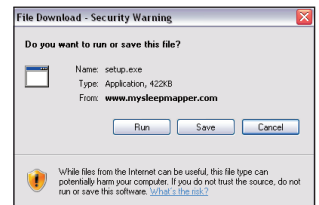
NOTE: Your screen may look different than the one shown here.



a.



b.



c.

### Step 3:

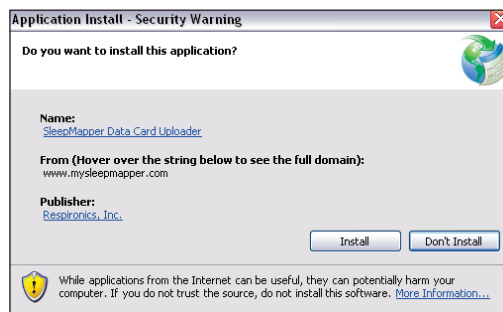
a: Now click the “install” button.

Installing the Data Card Uploader should take about one to two minutes.

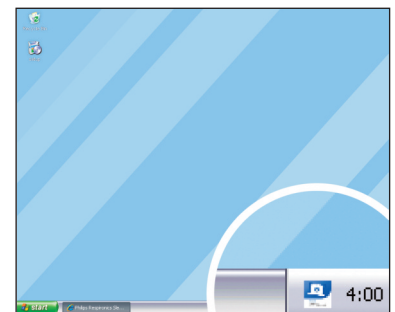
NOTE: Your screen may look different than the one shown here.

b: Once installed, you will find the Data Card Uploader in your computer system tray.

Now follow the next steps for transferring your data to SleepMapper.



a.



b.

# Transferring your data

## Step 1:

Remove the SD card from the back of your System One\* sleep therapy device.

\*To see which System One devices are compatible with SleepMapper, go to [www.sleepmapper.com/compatible](http://www.sleepmapper.com/compatible)



## Step 2:

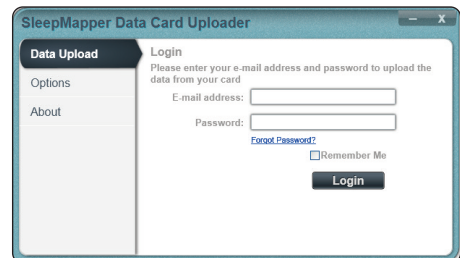
If you have an SD card slot in your computer, insert the SD card into that slot. If you have a standalone SD card reader, insert the card into the standalone device. The Data Card Uploader will now appear on your screen.

**NOTE:** If the Data Card Uploader does not appear, double-click the Data Card Uploader icon in your system tray.



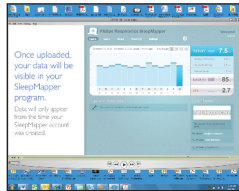
## Step 3:

Enter your email address and your SleepMapper password and click the "login" button.



## Step 4:

Click "data upload." This will start the uploading process.



Now your sleep therapy data will appear; data will only appear from the time you SleepMapper account was created.



## Step 5:

Now that you have completed the Data Card Upload process, you may remove the SD card and re-insert it into your therapy device.



Please visit [www.sleepmapper.com](http://www.sleepmapper.com)



© 2013 Koninklijke Philips N.V.  
All rights are reserved.

Respironics and SleepMapper are trademarks of Koninklijke Philips N.V. and its affiliates. All rights reserved.

SB 08/22/13

Philips Respironics  
1010 Murry Ridge Lane  
Murrysville, PA 15668

SleepMapper Product Support  
1-855-699-6276

For SleepMapper  
Product Support: email us at  
[sleepmapper.support@philips.com](mailto:sleepmapper.support@philips.com)

Philips Healthcare is part  
of Royal Philips