

# Create **high quality plans** with a **shorter treatment time**

## Philips Pinnacle<sup>3</sup> SmartArc

**SmartArc**<sup>1</sup> provides tools to deliver Volumetric Modulated Arc Therapy planning (**VMAT**)<sup>2</sup> using a conventional linear accelerator. Utilizing principles developed for both intensity-modulated arc therapy (IMAT) and volumetric-modulated arc therapy (VMAT), SmartArc provides the quality and efficiency of VMAT benefits **without** an expensive LINAC upgrade.

Compatible with all major linear accelerators,<sup>4</sup> SmartArc allows clinicians the flexibility and freedom to choose the delivery device that best fits their needs.

### Key advantages:

- High-quality treatments, lower monitor units, reduced delivery & QA times - independent of the LINAC.<sup>4</sup>
- Efficiency of VMAT without an expensive LINAC upgrade.<sup>5</sup>
- VMAT plans for constant dose rate (CDR) **and** variable dose rate (VDR) deliveries.

# Do more with SmartArc

## VMAT-quality plans on a budget

### Achieve results quickly

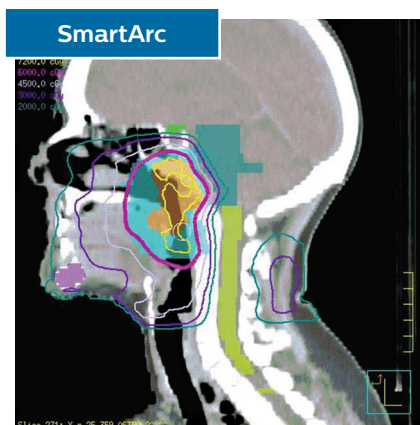
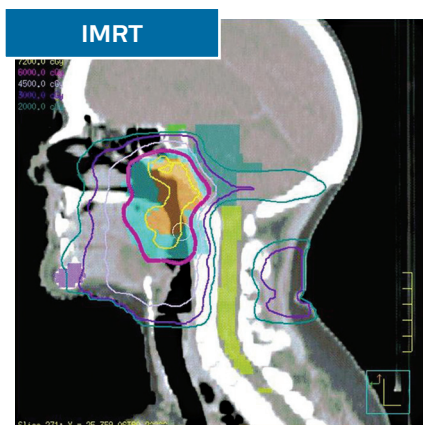
SmartArc's intuitive design allows quick adoption, while its fast computation provides workload and time benefits in planning and treatment quality assurance.

### Increase treatment efficiency

SmartArc makes efficient use of the LINAC's time to deliver treatment with enhanced speed and accuracy. Less patient time on the table can mean less radiation dose and toxicity to healthy tissues, and the preservation of function in key organs.

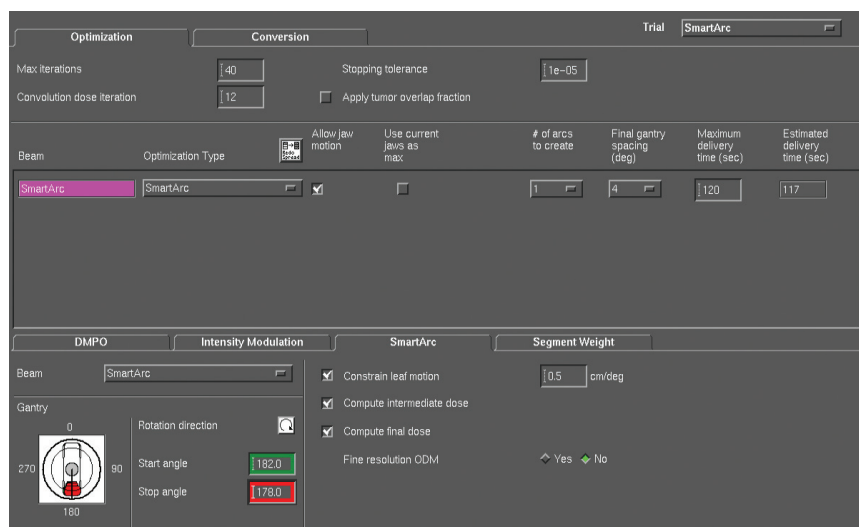
### VMAT upgrade without downtime

SmartArc creates efficient VMAT plans for both constant dose rate (CDR) and variable dose rate (VDR) deliveries. CDR delivery allows IMRT quality treatments with lower monitor units and reduced delivery times without an expensive LINAC upgrade.<sup>5</sup>



### Accelerate IMRT & VMAT planning

Adding Pinnacle<sup>3</sup> Auto-Planning (optional) further simplifies and accelerates IMRT & VMAT planning. Auto-Planning provides smart automation tools that help to consistently generate high-quality plans quickly, with limited intervention.



1. Developed in partnership with RaySearch Laboratories AB, Stockholm, Sweden.
2. Otto K. Volumetric modulated arc therapy: IMRT in a single gantry arc. Med Phys 2008;35:310-317.
3. Pinnacle<sup>3</sup> (unused)
4. Varian, Elekta & BrainLab linear accelerators
5. Varian linear accelerators

© 2015 Koninklijke Philips N.V. All rights are reserved.

Philips Healthcare reserves the right to make changes in specifications and/or to discontinue any product at any time without notice or obligation and will not be liable for any consequences resulting from the use of this publication.



Please visit [www.philips.com/pinnacle-smartarc](http://www.philips.com/pinnacle-smartarc)

Printed in The Netherlands.  
4522 991 13171 \* AUG 2015