



Improve your image

ClearVue 650 ultrasound system

PHILIPS

Introducing the ClearVue 650

The Philips ClearVue 650 ultrasound system is as versatile as it is elegant. Use it in a variety of settings for many types of exams and you'll see that within its smooth graceful lines lies an even greater treasure: intuitive operation that sets it apart from other ultrasound systems. In addition to superb clarity in 2D imaging, you'll also find that it's 3D/4D imaging made easy. That's the beauty of ClearVue 650.

Imagine a new dimension

Your patients expect the best from you. ClearVue 650 with Active Array technology helps you deliver. Count on stunning 2D and 3D/4D images with the clarity and detail resolution you need. ClearVue 3D/4D capabilities are designed to be easy to use and easy to learn, so that 3D/4D can fit seamlessly into your routine clinical workflow. Philips puts this technology within your reach, both financially and from a day-to-day workflow perspective.

A brilliant level of performance

This is a platform that can span a range of applications from Ob/Gyn to cardiac, abdominal, and general imaging. ClearVue 650 offers brilliant ease of use, advanced imaging modes, and best in class automation features. This versatile system is designed for superb image quality to enhance diagnostic confidence and for intuitive workflow with features that are sophisticated enough to be simple.

Designed for your everyday success

The intuitive design of ClearVue 650 puts the controls you need most often precisely where they should be to help optimize exam efficiency and automation. Customized SmartExam protocols also enhance productivity.

The elegant design of ClearVue 650 hints at the reduced complexity of the system. The modular design means enhanced serviceability, reliability, and sustainability inside a lightweight cart for increased portability and maneuverability.



ClearVue 650 features a state-of-the-art fold-down 19-inch LCD monitor with optimal viewing angles.

3D/4D made easy

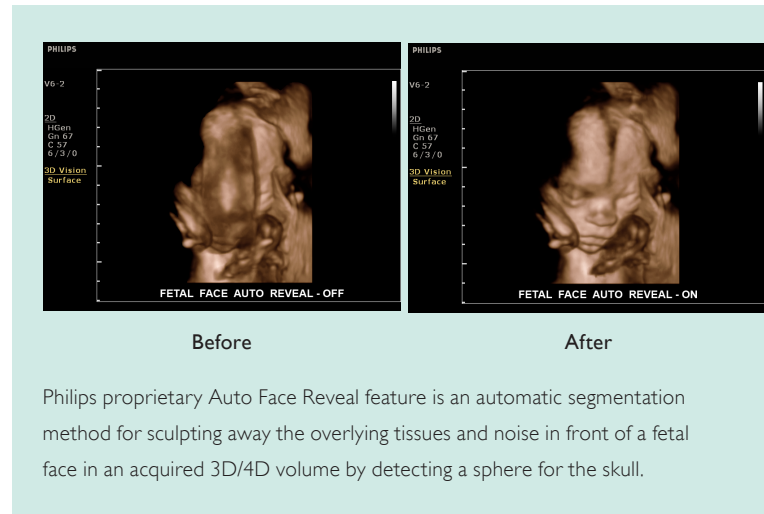
3D volume renditions and dynamic 4D displays are presented with incredible clarity and detail resolution.

3D/4D imaging powered by Active Array technology

Powered by Philips proprietary Active Array technology, ClearVue 650 is destined to change your perception of ultrasound by delivering superb 3D diagnostic images with quality, speed, and precision. Active Array integrates key imaging technologies into the transducers for excellent image quality in a small, lightweight system. Active Array technology is available on all ClearVue transducers, including the V6-2 and 3D9-3v.

Auto Face Reveal

Captures a 3D view of the fetal face to enhance visualization of potential facial defects while enhancing 3D/4D exam time.



Performance you'll value

The system is beautifully sleek on the outside, but it's what's on the inside that you'll find most valuable. Philips Active Array technology, in combination with proven technologies from our most advanced ultrasound systems, gives you the excellent image quality you expect from a leader in premium ultrasound.

Pulse inversion aids excellent image quality

Pulse inversion allows the transmission of successive harmonic pulses with opposite polarities, expanding the harmonic bandwidth to improve axial resolution.

TDI enhanced cardiac capabilities

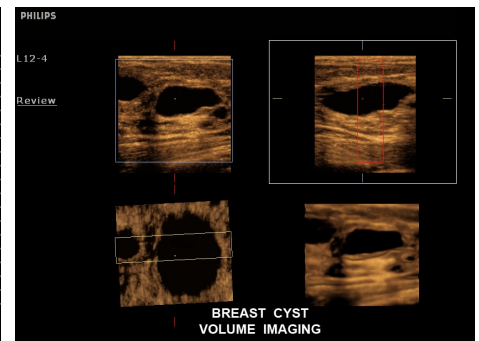
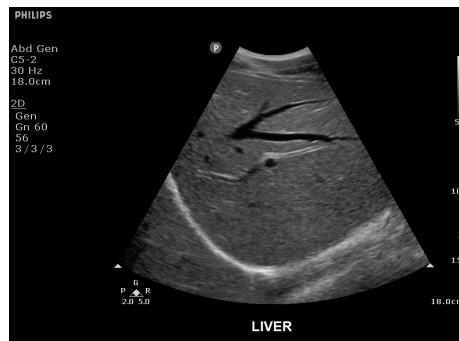
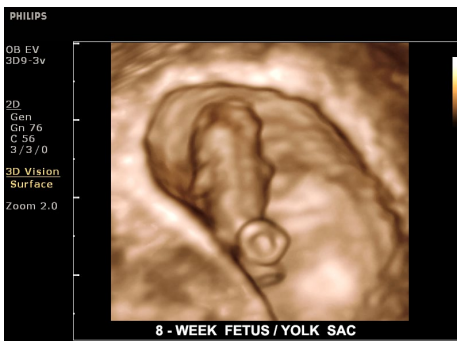
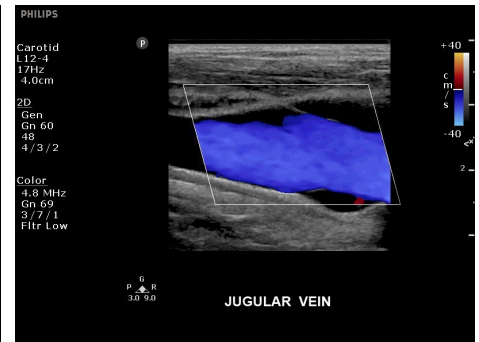
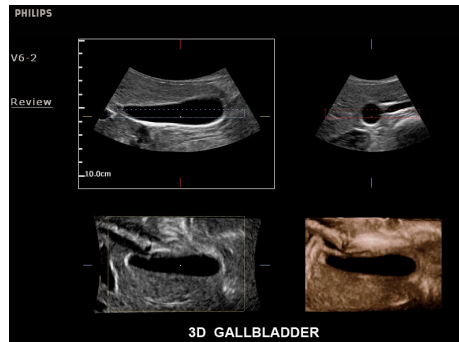
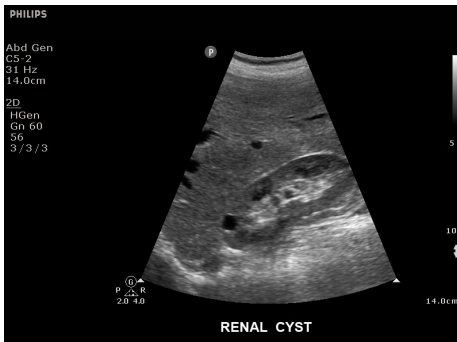
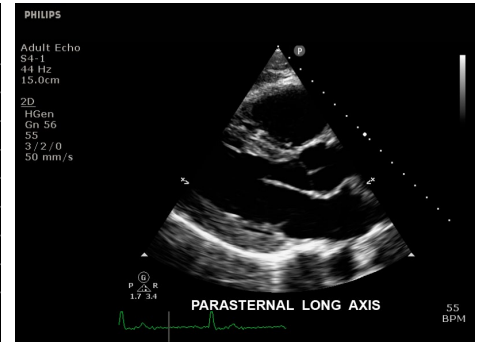
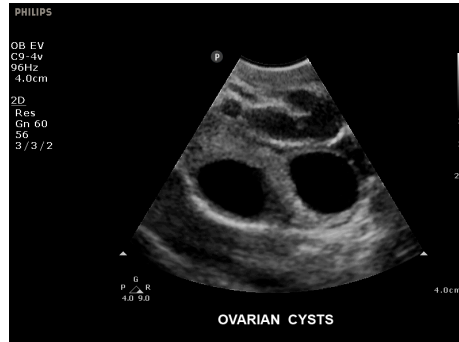
Pulsed wave Tissue Doppler Imaging (TDI) provides velocity mapping of cardiac tissue to evaluate cardiac function and wall motion.

SonoCT, XRES, and iSCAN for clarity and ease

For images with less noise and fewer artifacts, SonoCT offers true real-time compound imaging that merges up to nine lines of sight to create one amazing image with better clarity of curved and irregular borders. To attain extraordinary clarity and edge definition, advanced XRES adaptive image processing uses proprietary algorithms originally developed for Philips MR to display images that are virtually free from noise, without reducing frame rates. To quickly achieve optimal image quality in 2D, color, and Doppler exams, iSCAN image optimization automatically adjusts multiple parameters at the push of a button.



Image gallery



Head to toe, versatility is yours

Use the ClearVue 650 to enhance your ultrasound capabilities across a range of applications.

- Abdominal
- Small parts and superficial
- Pediatric
 - Head
 - Hips
- Musculoskeletal
- Urology and prostate
- Obstetrical
- Gynecological and fertility
- Vascular
 - Cerebrovascular
 - Peripheral vascular
- Transcranial Doppler
- Cardiac
 - Adult
 - Pediatric



Four transducer connectors allow for users to quickly switch between any of the ClearVue 650's suite of transducers: C5-2, C9-4v, V6-2, 3D9-3v, L12-4 and S4-1.

Demonstrating value far beyond its price

What it is	Why it matters
Core features	
Active Array technology	Integrates key imaging technologies into the transducer for superb image quality in a high-performing, lightweight, reliable system
Broadband beamforming and advanced signal processing	Acquires and processes the entire tissue signature for premium class tissue differentiation across multiple patient types
Advanced Doppler and color Doppler capabilities (CW, PW, CFI, CPA, HPRF PW, TDI, Triplex)	Perform advanced clinical studies with confidence
OB workflow tools, including quick-launch OB measurements	May reduce exam time and improve workflow
Configurable reports and analysis	Perform customized in-depth clinical analysis and reporting for enhanced communication of results
Options	
Advanced 3D/4D imaging with multiplanar reformatting (MPR)	Provides 3D/4D visualization and analysis of volume data; also viewable in glass-body, 3D color, invert, and color invert modes, with SonoCT and XRES available in the X-, Y-, and Z-slice planes for superb diagnostic clarity
3D fetal echo STIC (Spatio-Temporal Image Correlation)	Captures multiple volumes and synchronizes them based on a calculated heart rate; resulting volume image can be displayed in user-selectable views and interrogated in real time for more complete evaluation of fetal heart anatomy and function
Auto Face Reveal segmentation tool	Sculpts away overlying tissue (3D trim) to reveal the fetal face. May reduce exam time and enhance workflow with single button touch
Tissue Harmonic Imaging with Pulse Inversion technology	Reduces many artifacts while preserving tissue definition and resolution
XRES adaptive image processing and SonoCT image compounding	XRES reduces speckle noise artifacts for better margin definition and image clarity, while SonoCT reduces artifacts, improves contrast resolution, and allows irregular borders to be more readily visualized
Advanced system automation (2D, color and PW Doppler iSCAN options, 2D OPT, High Q, Intelligent Doppler, Adaptive Doppler, Adaptive color Doppler)	Quick one-button system performance may streamline your workflow, enhance patient throughput and exam consistency
Anatomical M-mode option	Easily generate M-mode trace from a user-defined line; ideal for patients with abnormal cardiac shapes or malpositioned cardiac structures
Panoramic and 3D imaging	Perform extended field of view imaging and freehand 3D surface rendering for enhanced exam documentation and communication
SmartExam protocols	Enhance performance, increase consistency, and reduce exam time through system-guided protocols
DICOM networking option	Provides Ethernet connection to DICOM networks for PACS viewing and archiving capabilities
Barcode scanner	Obtains patient information from hospital-generated barcodes to accelerate efficiency and decrease errors in data



The sleek control panel is designed to help speed image acquisition and management.

Comitted to your success

Designed for excellent serviceability and reliability, ClearVue 650 provides value-added advances that help you optimize your system every day and keep you running at peak performance.

Keeping you up and running

Philips advanced service features and value-added services* boost productivity and promote uptime. Where available, Remote Desktop allows for “virtual visits,” to enhance technical and clinical support and offer new options for training. Proactive monitoring promotes uptime through continuous monitoring that alerts Philips personnel to potential problems so they can be corrected before system operation is affected. You can also connect your system to the Philips Remote Service Network and enter a support request directly from your ClearVue 650 system, or generate a utilization report that provides data on key parameters to help you manage system use. On-cart software maintenance tools help optimize, maintain, and repair system software with ease while preserving custom annotations, calculations, presets, and patient data.

Green for you and your community

Sustainability at Philips is all about improving the health and wellbeing of individuals and their communities. ClearVue 650 is energy efficient with low power consumption to help save on energy costs. Its low heat dissipation is ideal in small rooms which may help reduce cooling costs.

Innovative financing and security solutions

Philips Medical Capital delivers flexible financial solutions to help you place a new ClearVue 650 in your facility or practice. Our financial experts understand your unique financial needs and provide flexible solutions that optimize asset utilization, reduce costs, and increase financial flexibility.

Trust in the Philips ultrasound legacy

At Philips, we've created our innovative portfolio of ultrasound products by striving for change that improves and simplifies the lives of patients and healthcare providers worldwide. The new ClearVue 650 ultrasound system with leading-edge technology and an intuitive design is no exception. Quality healthcare is now more accessible and affordable from a brand you can trust.

Philips SmartPath assures you easy access to solutions and innovations for the full life of your ultrasound system, so you can boost your clinical and operational potential and achieve your organizational goals.



Optimize

Optimize your system's performance both now and in the future with regular and ongoing updates, including functionality improvements and remote technical support.



Enhance

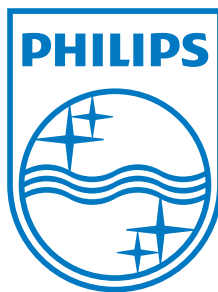
Enhance your equipment with regular technology upgrades, and take advantage of the newest features and capabilities.



Transform

Transform your investment at the end of your system's life by transitioning seamlessly to a next-generation solution or refurbished option.

* Not all services are available in all geographies. Services require service contract coverage.



Please visit www.philips.com/ClearVue650

© 2013 Koninklijke Philips Electronics N.V. All rights are reserved.
Philips Healthcare is part of Royal Philips Electronics

Philips Healthcare reserves the right to make changes in specifications and/or to discontinue any product at any time without notice or obligation and will not be liable for any consequences resulting from the use of this publication.

Printed in The Netherlands
4522 962 92091 * JAN 2013

How to reach us
www.philips.com/healthcare
healthcare@philips.com

Product information
www.philips.com/