



For comprehensive  
coverage with flexibility

Philips RightFit Service Agreement Value for Ultrasound

**PHILIPS**

# The right fit for comprehensive coverage

Excellent service is the centerpiece of Philips Customer Services. Philips RightFit Service Agreement Value addresses your need for comprehensive equipment coverage in today's healthcare environment. When you purchase the latest ultrasound imaging equipment, you expect uncompromising clinical performance and an excellent return on your investment. RightFit Value harnesses the power of Philips to provide high quality support, allowing you to achieve the clinical and financial results you need.

## We're here to support you

Dedicated local, factory-trained service engineers provide award-winning service and solutions. Your Philips Service Engineer provides excellent protection for your investment. You have the confidence of knowing that the full resources and knowledge of Philips support you to achieve higher productivity and peak performance.

The Philips Customer Care Solutions Center has a full team of experts – technical and clinical applications associates – to support you. Philips Remote Services links your Philips ultrasound equipment to our Remote Services Network, enabling and accelerating remote clinical and technical support, problem diagnosis, proactive monitoring, and corrective maintenance.

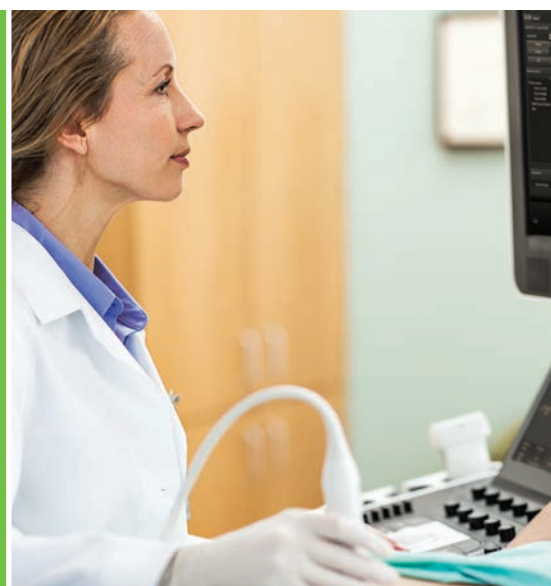
## Ultrasound

### Philips leads industry in customer satisfaction

Year after year, Philips Healthcare Ultrasound has been recognized for excellence according to independent IMV ServiceTrak™ surveys.<sup>1</sup> Customers have consistently ranked Philips #1 in overall performance and #1 in overall manufacturer satisfaction with the highest marks in customer satisfaction for all Ultrasound Systems, including Cardiology, Radiology, and OB/GYN.

Over 2,000 customers ranked services on the following criteria:

- Manufacturer satisfaction
- System performance
- Service agreement satisfaction
- Service performance
- Phone support
- Remote services
- Service engineer performance
- Emergency service performance



## The tangible benefits of Philips RightFit Service Agreement Value

- Peak equipment performance
- Next day on-site service and parts delivery
- Skilled technical expertise
- Genuine Philips replacement parts
- Planned Maintenance
- Remote services
- Technical and clinical applications support
- System enhancement and upgrade discounts

### A broad range of value-added features and options

Our flexible, effective solutions give you the power of choice in service. Your Philips RightFit Service Agreement Value provides comprehensive protection with additional features such as generous upgrade and education discounts. You may choose to enhance the agreement with options for on-site clinical training, supplemental transducer coverage, and extended system maintenance.

The success of your organization depends on people. Philips RightFit Service Agreements are designed with that in mind – developing your staff, improving your organization's efficiency, and increasing patient satisfaction. Philips Customer Services supports you in every way, assuring there is no compromise between productivity and patient care.

Philips Customer Services is service that works for you. Call our Customer Care Solutions Center at **800-722-9377**. [www.philips.com/healthcare](http://www.philips.com/healthcare)

## Philips RightFit Value for Ultrasound

Hardware and software coverage	
Standard hours of coverage	Monday – Friday 8 a.m. – 5 p.m.
Next day on-site response	Included
Labor and travel	Included
Standard Parts coverage	Included
Preferred labor rates	Included
Performance assurance	
Planned Maintenance*	Included
Additional Planned Maintenance	Optional
Upgrades and updates**	
System upgrade discounts	35%
Transducer discounts	35%
Software updates	Included
Remote services	
Technical support	Included
Clinical applications support	Included
Remote diagnostics	Included
Proactive monitoring	Included
Education and training	
On-site clinical education	Optional
Biomedical engineer training (tuition)	Optional
Supplemental coverage	
Accidental transducer damage protection discount	50%
TEE Primary coverage***	Optional
TEE Assist coverage***	Optional
Solution enhancements	
Utilization reports	Included
On-board diagnostics	Included

\* Per Philips manufacturer specifications performed during standard hours of coverage.

\*\* Upgrades do not include platform changes.

\*\*\* Available as stand-alone service agreements.

Availability of all options depends on system type and software release levels. These features are representative of the type of coverage available. Certain options and features are not available for all products or in all countries, and exclusions or surcharges may apply in certain situations. The specific features and options for your equipment are determined by the written terms of your Service Agreement. Please contact your Philips representative with any questions regarding feature availability.



<sup>1</sup> ServiceTrak is one of the most recognized and trusted surveys in the healthcare industry. The survey is conducted annually by IMV, an independent healthcare market research company which has been analyzing the medical imaging, clinical diagnosis, and analytical instrument markets since 1990. ServiceTrak reports provide objective, non-anecdotal benchmarks of service levels, as measured by actual customer experiences and impressions. Respondents are drawn from a randomized database of U.S. hospitals.

**Philips Healthcare is part of Royal Philips**

How to reach us

[www.philips.com/healthcare](http://www.philips.com/healthcare)

[healthcare@philips.com](mailto:healthcare@philips.com)

Please visit [www.philips.us/RightFit](http://www.philips.us/RightFit)



© 2014 Koninklijke Philips N.V.  
All rights are reserved.

Philips Healthcare reserves the right to make changes in specifications and/or to discontinue any product at any time without notice or obligation and will not be liable for any consequences resulting from the use of this publication.

Printed in USA  
4522 991 02871 \* APR 2014