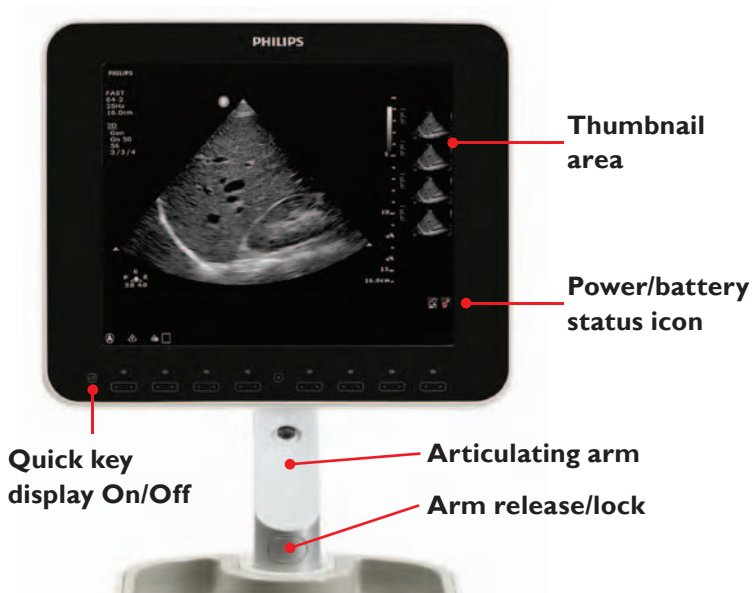
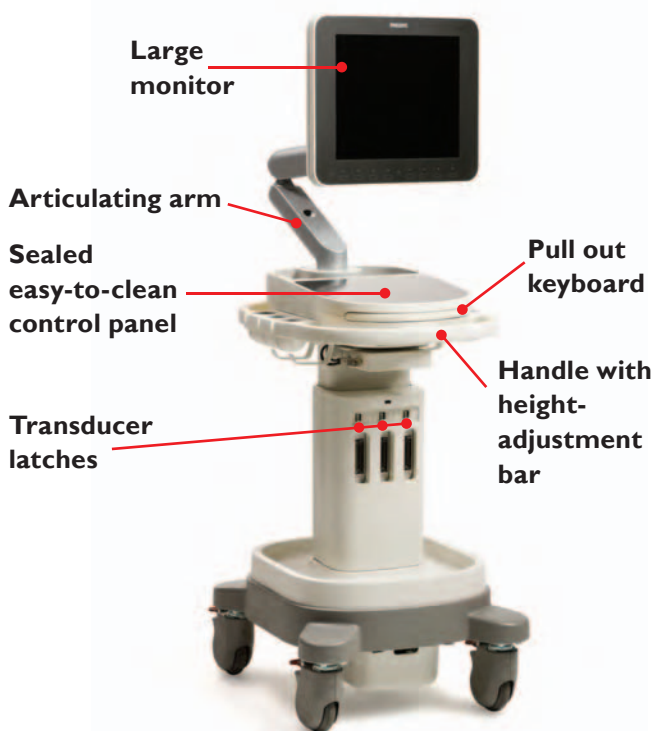


Getting started

Philips Sparq ultrasound system, easy to experience



Control panel

System on/off: Touch to turn power on; touch and hold for 2 seconds to turn power off

Sleep: Touch to put system to sleep; touch again to awaken system

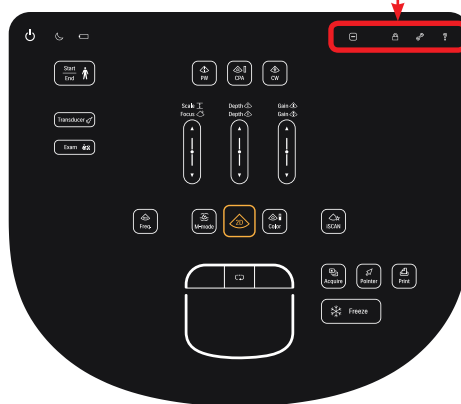


Simplicity Mode off

Simplicity Mode: Hides controls that are used less frequently

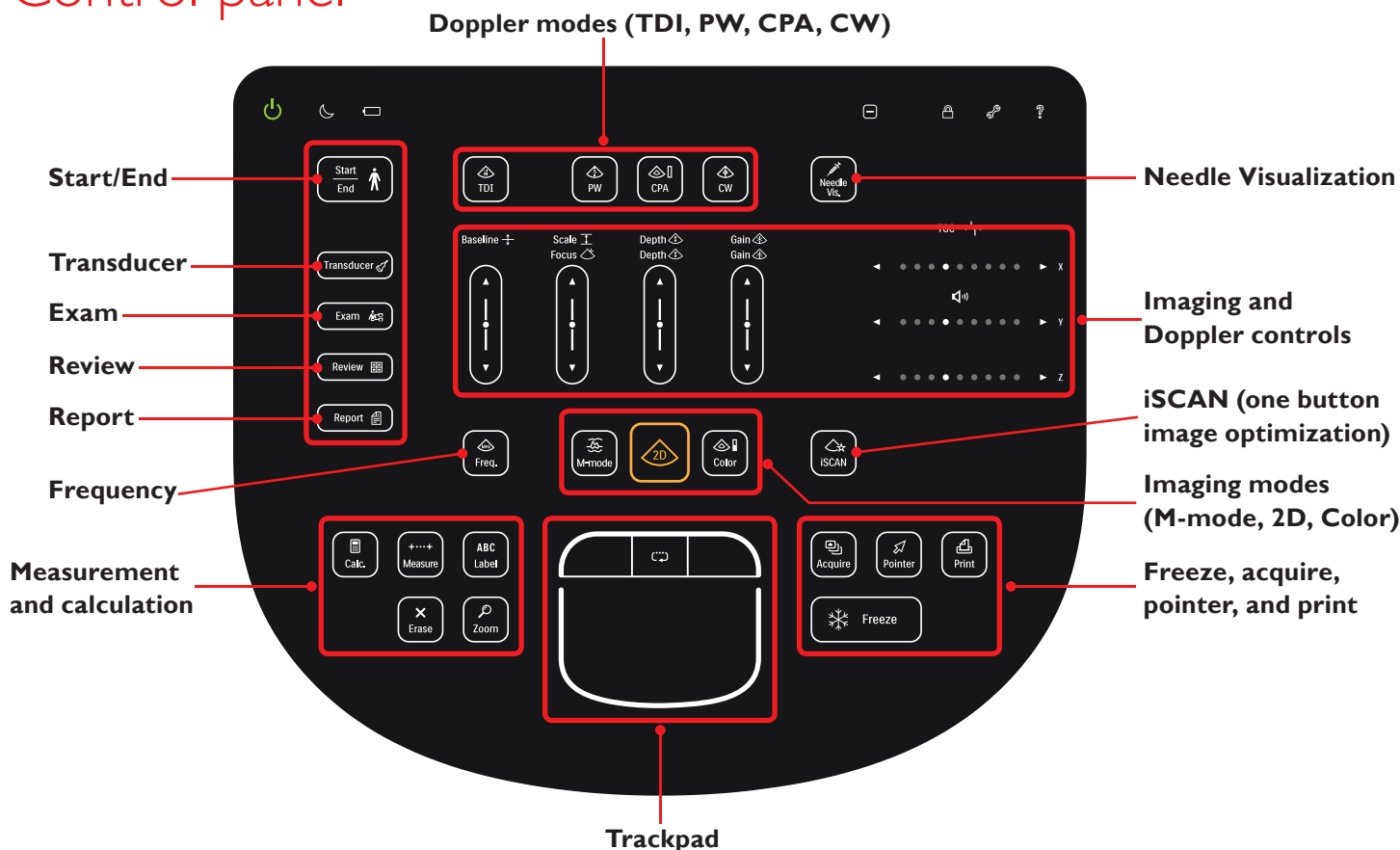
Lock: Locks control panel for cleaning

Setup: Configuration settings

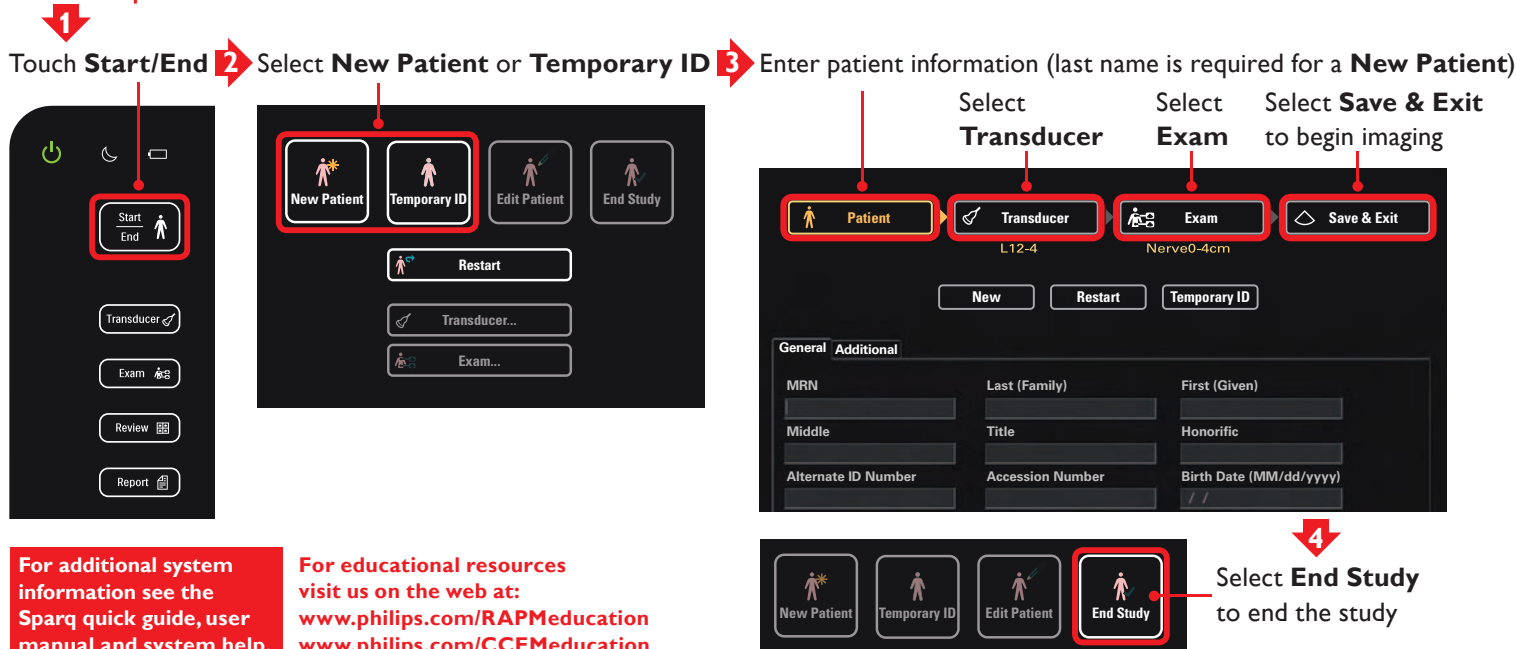


Simplicity Mode on

Control panel



Start patient exam



Please visit www.philips.com/sparq



© 2012 Koninklijke Philips Electronics N.V.
All rights are reserved.

Philips Healthcare reserves the right to make changes in specifications and/or to discontinue any product at any time without notice or obligation and will not be liable for any consequences resulting from the use of this publication.

Philips Healthcare is part of Royal Philips Electronics
www.philips.com/healthcare
healthcare@philips.com

Printed in USA
NOV 2012



Scan this QR code with your smartphone to find out how Sparq helps you do more.