


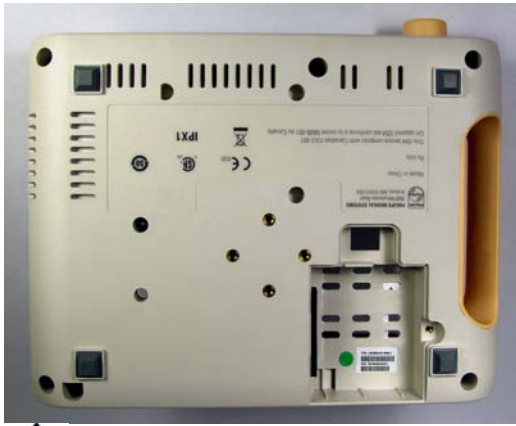


Product name:	SureSigns VM1	
Reference Identifier:	(Model) SureSigns VM1 (Reference num) 863264, 863265, 863266	
Total weight (in Kg):	1.97 kg (863266 including battery & C02 module and recorder options)	
Producer /Manufacturer	Name company:	Philips Medical Systems
	Address:	3000 Minuteman Rd
	Zip code:	Andover, MA 01810
	Country:	USA

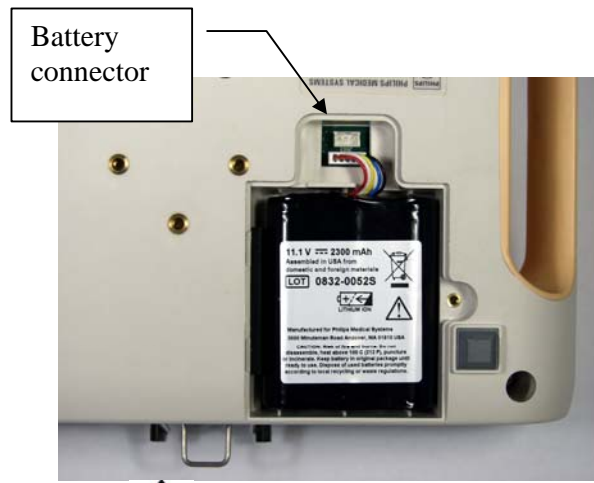
	Note – see figures 1-12 for disassembly	
Recycle info	Substances:	Location
Special attention 	Warning Before attempting to open or disassemble the monitor, disconnect the AC power from the monitor and remove the battery. Caution, may be high voltage on power supply components.	Figures 1, 2, 3
	Warning capacitors on main board and power supply board. Use extreme caution when disassembling. Safety equipment should be used (glasses & gloves).	Figure 7
Batteries 	Type:	Location
	Lithium Ion battery CAUTION (Lithium-Ion battery): risk of fire, explosion, or burns. Do not short circuit, crush, heat above 100°C, incinerate, or disassemble the battery. Dispose of used batteries according to manufacturer's instructions.	Figure 2
Hazardous 	Item	Location
	Tin lead solder on the PCB boards	Figure 7, 8, 9


Additional Information as needed

Material content (global)	Weight in Kg	Materials content (continue)	Weight in Kg
Metal: Aluminum chassis for mounting circuit boards and partial holding of LCD.	.05 Kg	Tin Lead solder used on PC Assemblies (ratio 63/37)	varies
Flame Retardant (FR) Plastics (circuit boards including components)	0.599 Kg	Equivalent Lithium Content in Lithium Ion Battery	1.94g Panasonic cell, 2.07g Sanyo cell
Plastics (upper & lower cases, AC inlet, & fan)	0.883 Kg	Overall Battery Weight	0.147 Kg
Speaker (magnet)	0.010 Kg	Stainless Steel (metal clips on side of recorder)	0.008 Kg
Brass (PEM nuts ~ 1g each)	0.011 Kg		



 **Figure 1 – VM1 battery area open**



 **Figure 2 – VM1 Battery install**

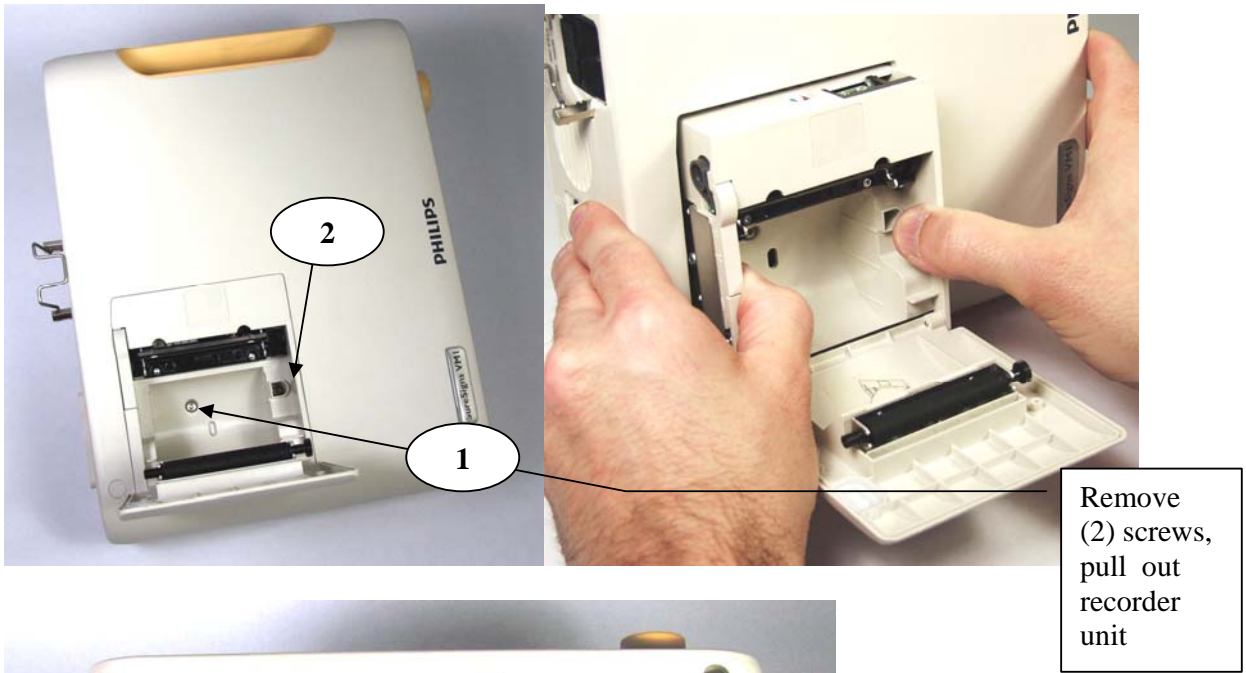


 **Figure 3 – VM1 battery cover**

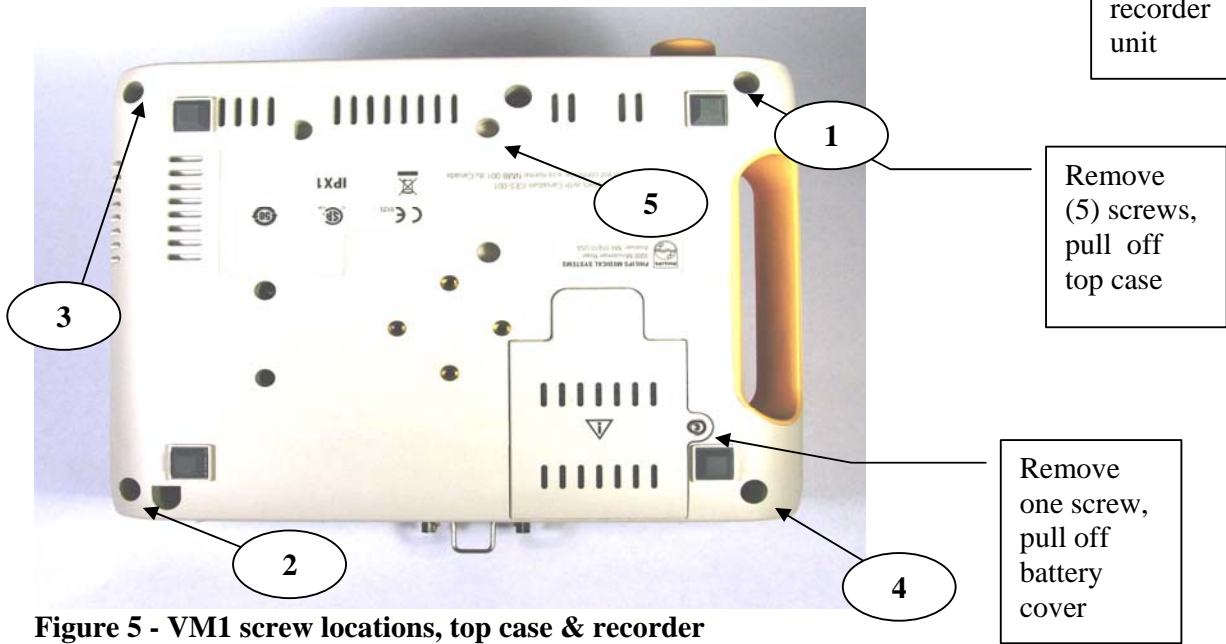
Figures 4-12: VM1 Dissassembly



Figure 4 - Full VM1 unit at left



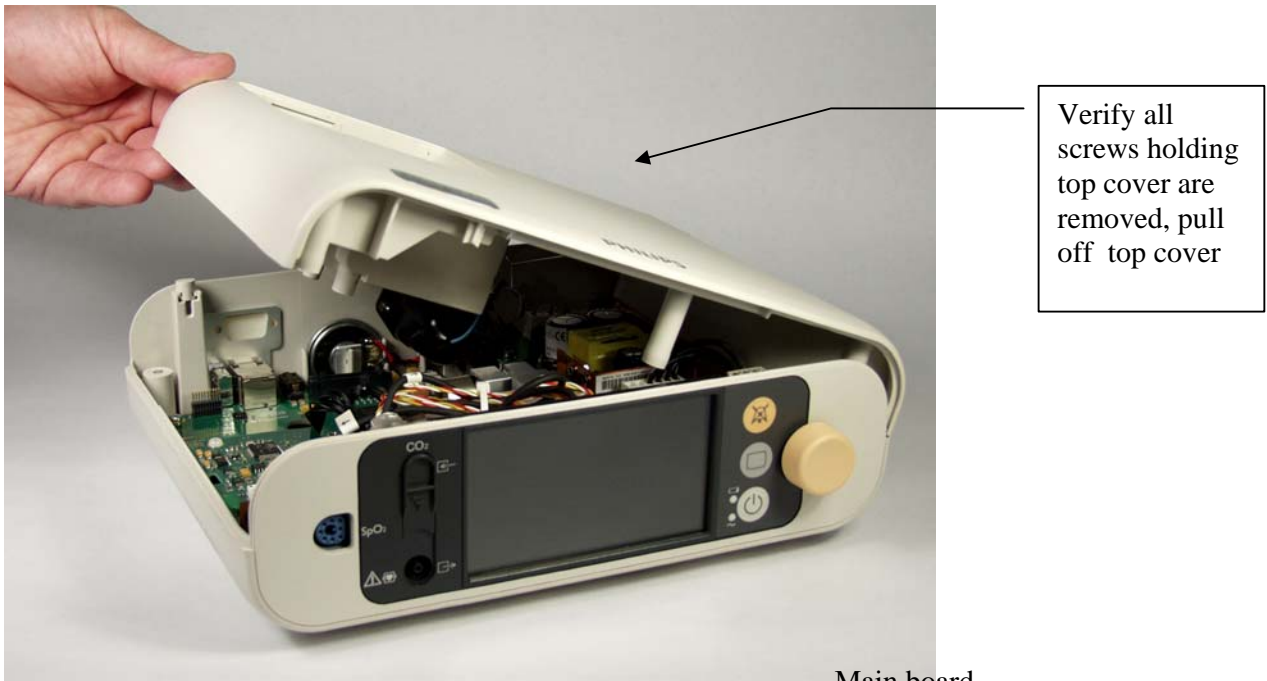
Remove (2) screws, pull out recorder unit



Remove (5) screws, pull off top case

Remove one screw, pull off battery cover

Figure 5 - VM1 screw locations, top case & recorder



Verify all screws holding top cover are removed, pull off top cover

Main board

Figure 6 – Pulling off top case

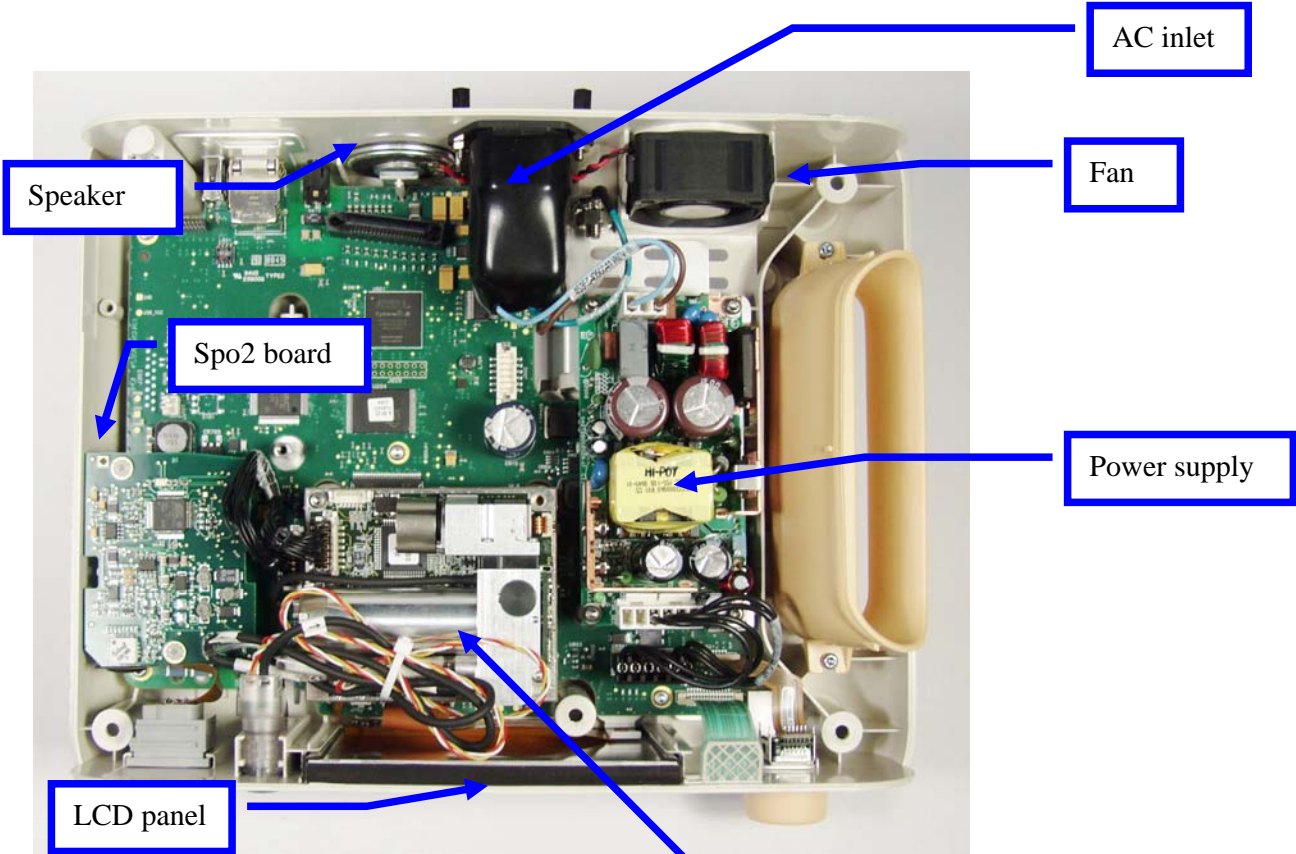


Figure 7 – Components inside bottom case

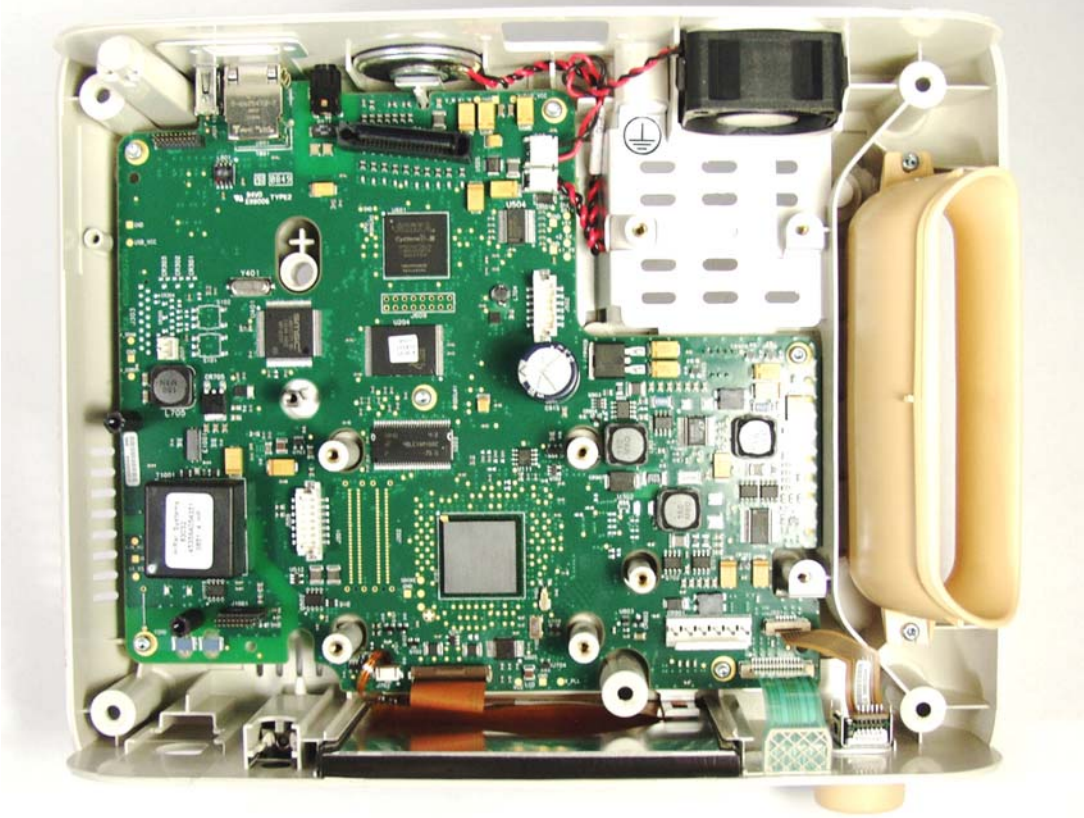


Figure 8 – Bottom case main board stripped of Power supply, Sp02, etC02, & AC inlet removed from sidewall.



 **Figure 9 - Removing main board**



Figure 10 - Removing knob from front panel.

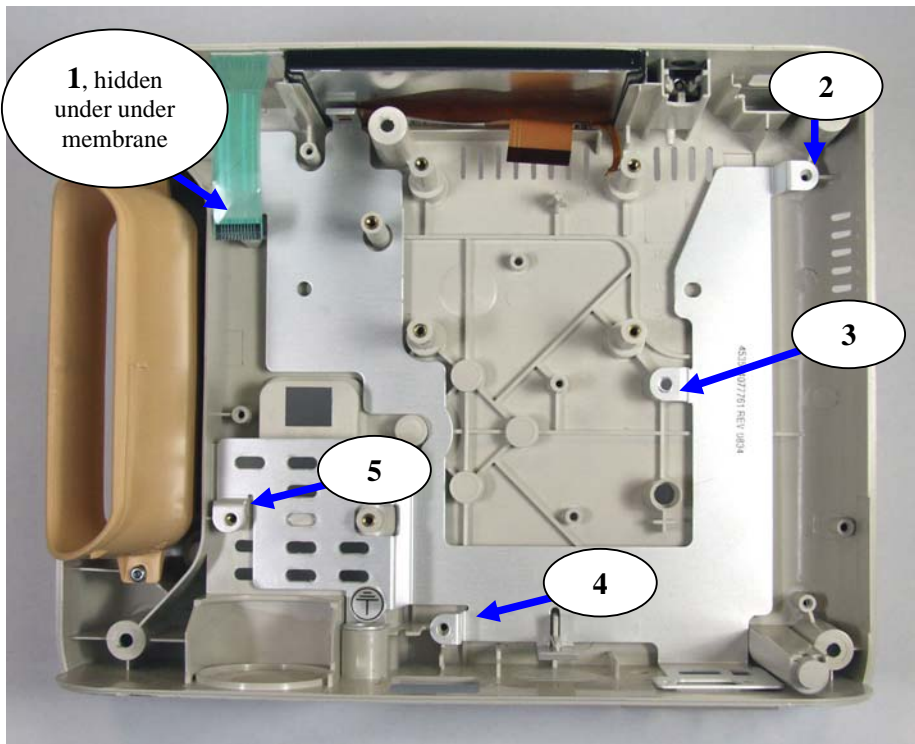


Figure 11 – Sheet metal view (five mount locations, screws through various PCA's & sheet metal into tapped hole on bottom cover)

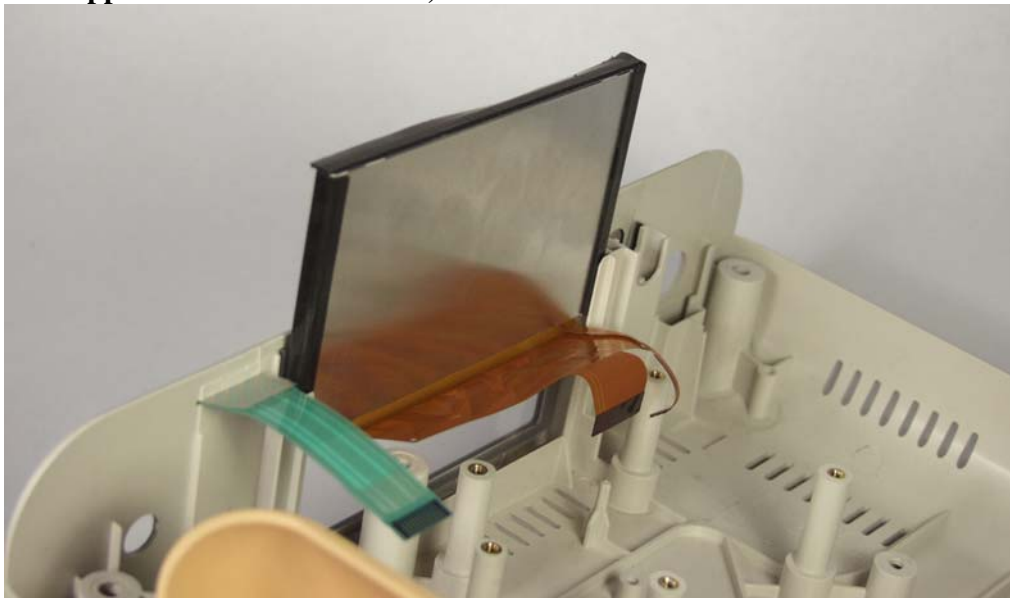


Figure 12 – LCD removal (slides out of channel)

