




Philips Medical Systems / Product Recycling Passport

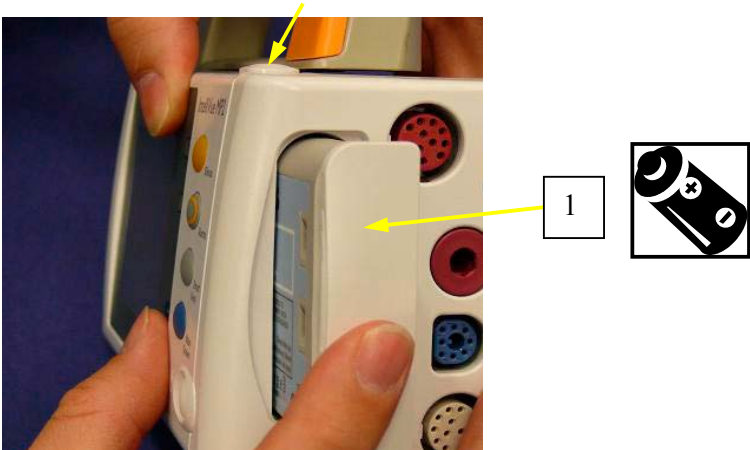
| | | |
|-------------------------------|---------------------------------|------------------------------------|
| Product name: | MP2 / X2 Patient Monitor | |
| Identification code | M8102A / M3002A | |
| Total weight (in Kg) | 1.26 kg | |
| Producer /Manufacturer | Name company: | Philips Medizin Systeme Boeblingen |
| | Address: | Hewlett-Packard Strasse 2 |
| | Zip code: | Boeblingen 71034 |
| | Country: | Germany |
| | | |

| Recycle info | Substances: | Location |
|---|------------------------|-----------------|
| Hazardous  To be removed | | |
| | | |
| | | |
| | | |
| | | |
| | | |
| Batteries  To be removed | Type: | Location |
| | Lithium Ion Battery 1x | 1 (item 1) |
| | | |
| | | |
| | | |
| | | |
| Special attention  | Item | Location |
| | TFT-Display | 5 (item 2) |
| | | |
| | | |
| | | |
| | | |
| | Item | Location |
| | | |
| | | |
| | | |
| | | |
| | | |

| Material content (global) | Weight in Kg | Materials content (continue) | Weight in Kg |
|---------------------------|--------------|------------------------------|--------------|
| Aluminium | 0.1 | Battery | 0.16 |
| Steel | 0.1 | All other material types | 0.2 |
| Plastics etc | 0.4 | | |
| Printed Circuits Boards | 0.3 | | |

Locations as mentioned in the Passport (Pictures information)

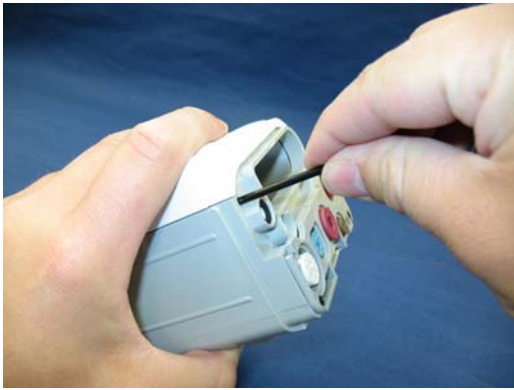
1 Press the battery release button and remove the battery.



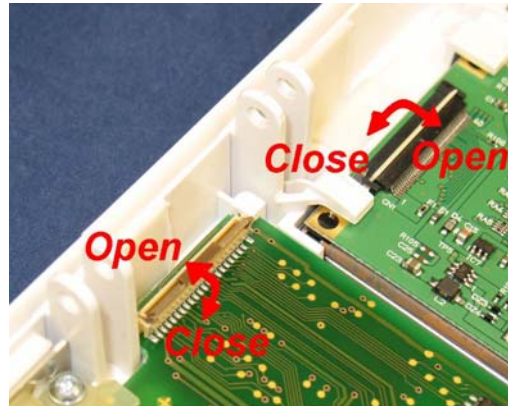
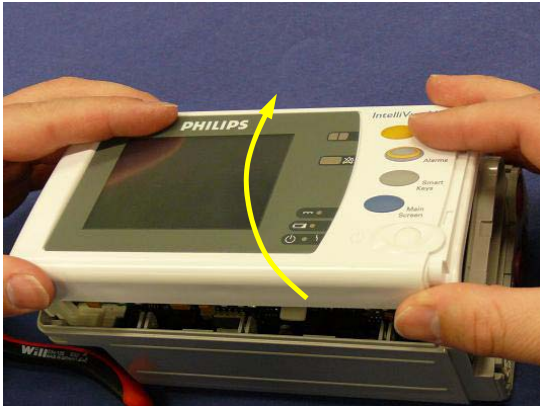
2 Remove the Side Cover: position the thin-bladed screwdriver in the small slot provided for this purpose. Then push off the side cover. A click signals that the cover has been removed from its position.



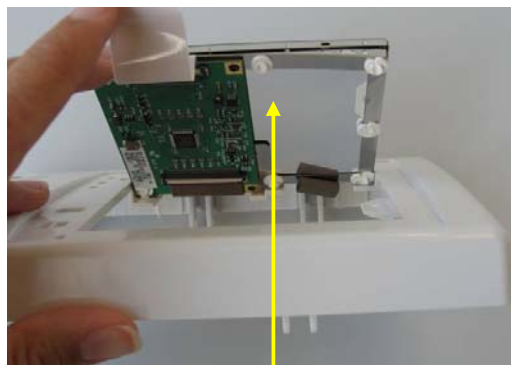
3 To remove the display, position the MP2 /X2 with the connectors facing towards you. Locate the heads of the two pins on the display side. Remove these by lifting them out with a screwdriver and then pulling them out manually.



- 4 Open up the display by lifting it. The display is connected to the device with two flex cables. These flex cables are secured with two latches that open in opposite directions. The photo below shows the latches in open position.



- 5 To separate the display from the plastic part, first remove the overlay foil with aid of a screwdriver, and then push the glued display assembly from the backside through the frame.



2

