




Philips Medical Systems / Product Recycling Passport

Product name:	Avalon FM40 / FM50 Fetal Monitor	
Identification code	M2704A / M2705A	
Total weight (in Kg)	8.3 kg	
Producer /Manufacturer	Name company:	Philips Medizin Systeme Boeblingen
	Address:	Hewlett-Packard Strasse 2
	Zip code:	Boeblingen 71034
	Country:	Germany

Recycle info	Substances:	Location
Hazardous  To be removed		

Batteries	Type:	Location
 To be removed		

Special attention	Item	Location
	2 Fluorescent Tubes of TFT-Display	Item 1

	Item	Location

Material content (global)	Weight in Kg	Materials content (continue)	Weight in Kg
Aluminium	0.8	All other material types	0.2
Steel	4.6		
Plastics etc	1.7		
Printed Circuits Boards	1.0		

Locations as mentioned in the Passport (Pictures information)

1 Remove the Top Cover

The top cover is held by eight screws, six at the rear and one on each side. Remove the six screws from the rear, and one screw from each side of the top cover, using a T-10 Torx screwdriver.



○ Screw locations

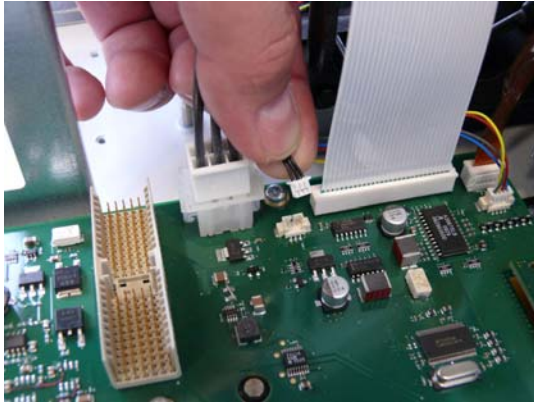


With the front of the monitor facing you, hold the sides of the top cover and push sharply away from you to release the top cover from the chassis.

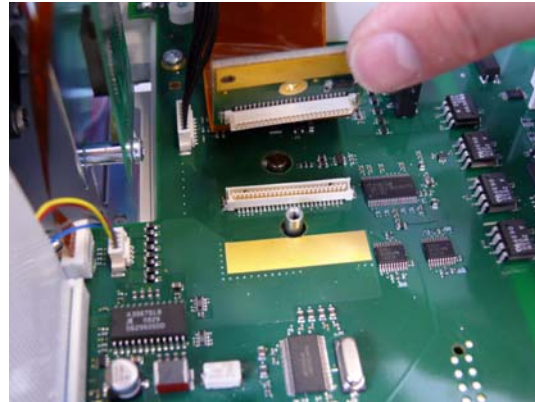
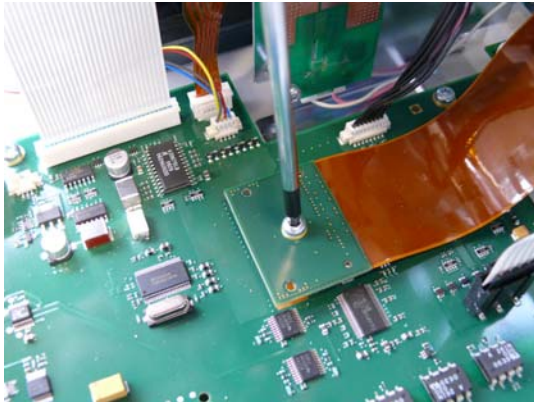


2 Removing the Front Bezel Assembly

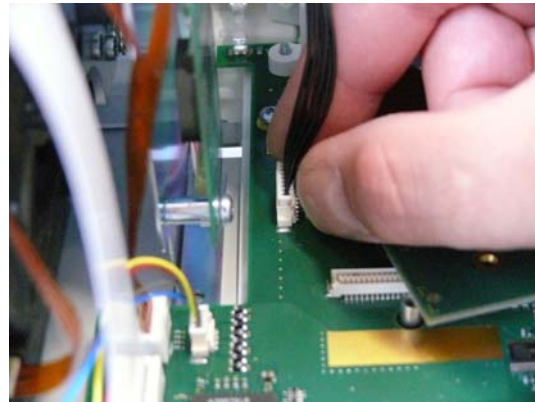
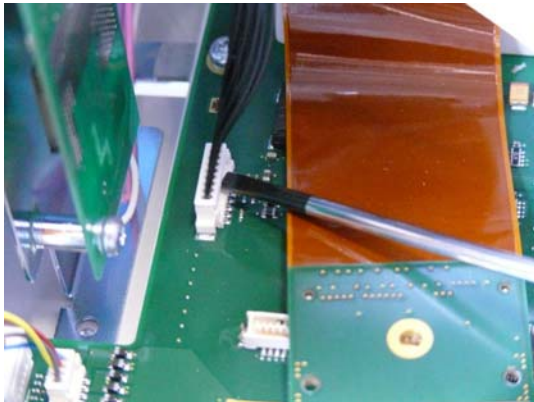
Disconnect the power switch cable connector from the API board.



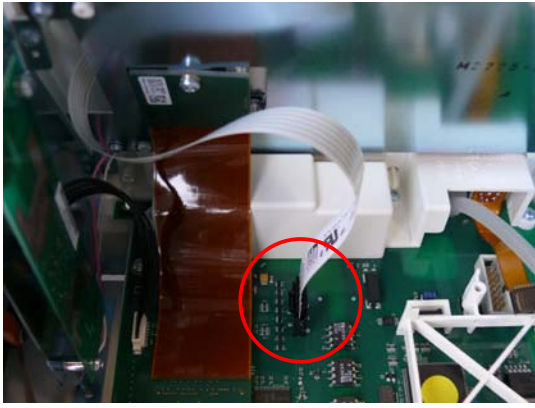
Remove the display ribbon cable from the connector on the API board, after first removing the screw securing connector.



Disconnect the backlight inverter cable connector from the API board and...



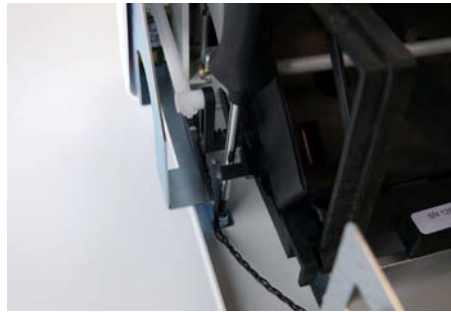
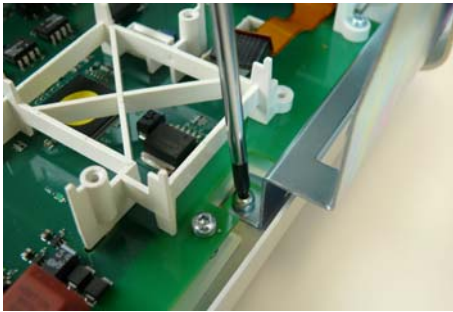
... disconnect the touch cable connector from the API board.



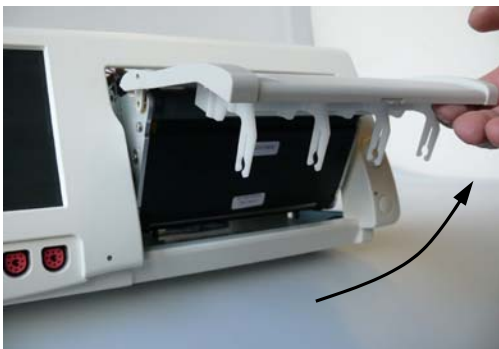
Separate the two braided copper (recorder Assembly) earthing wires from the front bezel metal frame by detaching the spade connectors.

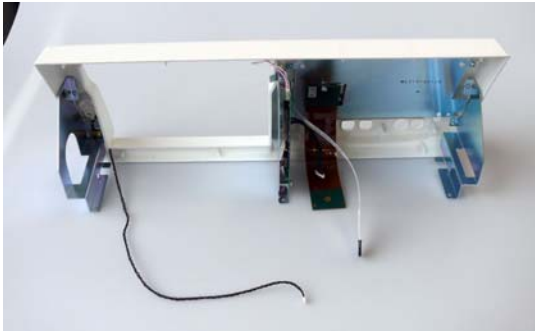


Remove the three screws holding the front bezel assembly to the chassis.



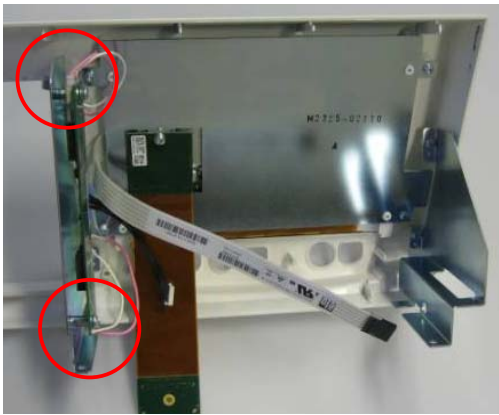
Unclip the bottom of the recorder paper table from the recorder assembly and remove the front bezel assembly.



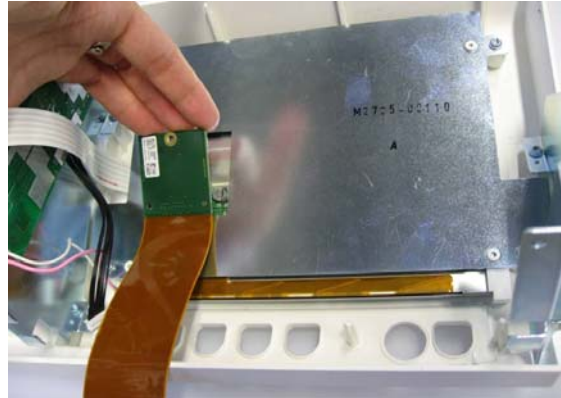
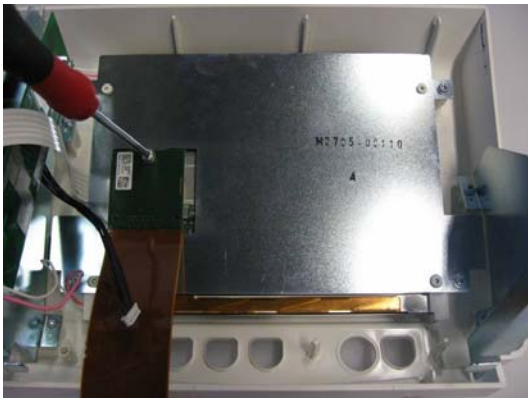


3 Removing the Display

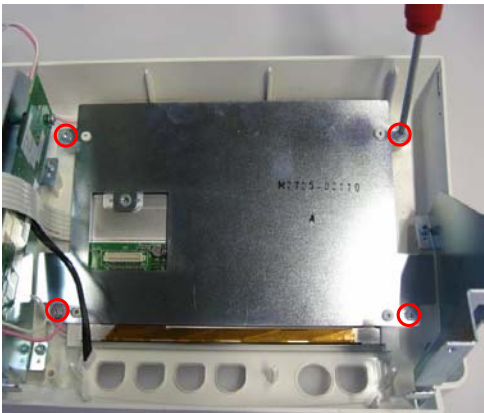
Disconnect two back light cables from the board.



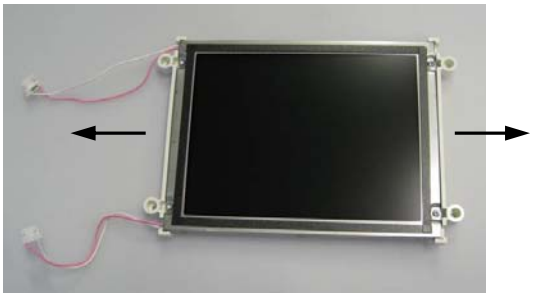
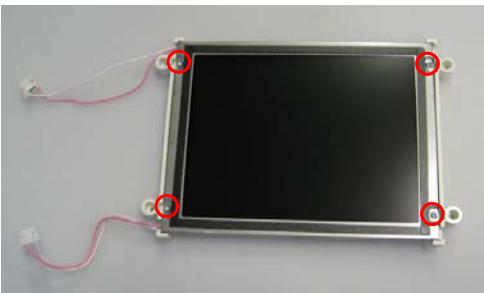
Unscrew the ribbon cable from the Front Bezel Assembly and lift it.



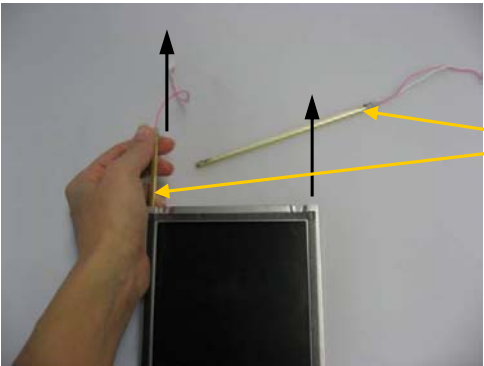
Remove four screws to detach the sheet metal and uncase the display assembly.



Lightly open the four screws and peel away the plastic parts on the side.



Extract the fluorescent tubes by pulling the cables.



1

