



The future of PCI is here

CorPath® 200 Robotic-assisted PCI System – Exclusively from Philips

Corindus
Vascular Robotics

PHILIPS

Corindus CorPath[®] 200

Robotic-assisted PCI System

For Patients

- Stent placed with robotic precision¹
- Precise point and shoot guidewire manipulation
- Sub-millimeter measurement
- Discrete 1mm device movements

For Physicians

- Reduction in radiation exposure²
- Improved ergonomics
- Enhanced visualization while sitting in the Interventional Cockpit

For Hospitals

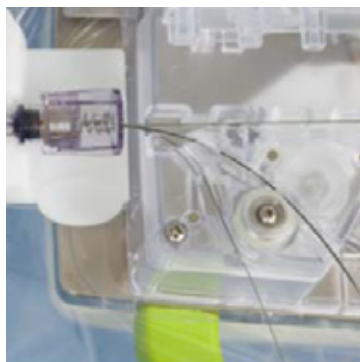
- Attract and retain physicians
- Unique tool to highlight technology leadership to attract patients
- Cost efficient solution
- Quick installation into existing cath lab
- Designed to fit into current workflow demands



The CorPath[®] 200 System is the first designed to empower PCI with robotic precision. This novel system enables the placement of coronary guidewires and balloon/stent devices from the safety of a radiation-protected, Interventional Cockpit.

¹ Robotic precision defined as movement of devices by the CorPath[®] 200

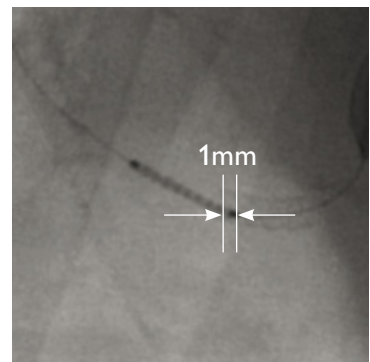
² PRECISE Clinical Trial



Open architecture –
flexibility to use your preferred
stent and guidewire



Ease of use –
simple, intuitive user interface



Robotic precision –
extend dexterity with 1mm
discrete movements

**Philips Healthcare is part of
Royal Philips Electronics**

How to reach us

www.philips.com/healthcare
healthcare@philips.com

Asia
+49 7031 463 2254

Europe, Middle East, Africa
+49 7031 463 2254

Latin America
+55 11 2125 0744

North America
+1 425 487 7000
800 285 5585 (toll free, US only)

CorPath® 200 Robotic-assisted PCI System is intended for use in the remote delivery and manipulation of coronary guidewires and balloon/stent catheters during PCI procedures. The PRECISE Clinical Study was a 164 patient, multi-center non-randomized prospective single-arm study. The trial demonstrated the safety and efficacy of the robotic-assisted PCI with outstanding clinical and technical procedural outcomes.

Call 800-605-9635 to schedule a demonstration.

CorPath and Corindus are registered trademarks of Corindus, Inc., registered in the US. Corindus, Inc., reserves the right to modify the specifications and features described herein, or discontinue manufacture of the product described at any time without prior notice or obligation. Please contact your authorized Corindus representative for the most current information.

Copyright © 2012 Corindus, Inc. All rights reserved.

309 Waverley Oaks Road, Suite 105
Waltham, MA 02452
info@corindus.com
www.corindus.com



Please visit www.philips.com/corindus



© 2013 Koninklijke Philips Electronics N.V.
All rights are reserved.

Philips Healthcare reserves the right to make changes in specifications and/or to discontinue any product at any time without notice or obligation and will not be liable for any consequences resulting from the use of this publication.

Printed in The Netherlands.
4522 962 93691 * MAR 2013