



PHILIPS

Ultrasound

CX50 POC

Premium performance compact ultrasound

Philips CX50 POC CompactXtreme ultrasound system
for Critical Care and Emergency Medicine

The **image quality you need** for your critically ill patients

Now there is an ultrasound system that is uniquely suited to meet the needs of critically ill patients and the clinicians who care for them. The Philips CX50 POC system combines excellent image quality with a small, lightweight, and highly maneuverable cart, making it easy to bring premium performance ultrasound to the bedside.

Clinically proven PureWave imaging

The CX50 POC is the only compact ultrasound system using premium PureWave crystal technology. This dramatic breakthrough in transducer technology provides exceptional image quality, even on the most technically challenging patients.

Exceptional echo capability

Increase your diagnostic confidence when you have to make critical decisions regarding the hemodynamic status of your patients. The S5-1 and X7-2t PureWave transducers provide exceptional performance for all transthoracic and transesophageal echo exams.

Additional clinical information adds value

A survey done by a team of intensivists led by Dr. Yanick Beaulieu at Hôpital du Sacré-Coeur in Montreal demonstrated that the CX50 POC provided additional clinical information in 96% of technically difficult bedside echo exams compared to other compact ultrasound systems. This additional information changed the diagnosis or management of the patient in 77% of cases.*

* Results are specific to the institution where they were obtained and may not reflect the results achievable at other institutions.



Premium class performance in a compact system

The CX50 POC system is designed for increased efficiency and diagnostic confidence at the bedside. Featuring clinically proven premium technologies, it's designed to meet the expanding requirements of clinical applications in critical care settings.

Side-by-side M-mode facilitates lung imaging interpretation

CX50 POC offers side-by-side M-mode featuring a live reference image that makes it easy to interpret real-time lung imaging in the ICU.

Needle Visualization to enhance needle display

During ultrasound-guided procedures, the CX50 POC's needle visualization feature can assist with line placement and other invasive procedures. The needle is enhanced in the image display without degrading surrounding tissue, allowing exceptional visibility of anatomy and increasing confidence during procedures.

The CX50 POC system combines premium performance and easy-to-use tools.

iSCAN	Quick, one-button optimization of images and Doppler signals
SonoCT and XRES	Clinically proven to improve image quality and reduce noise and artifacts
PureWave technology	Superb image quality across a wide variety of patient types
Battery operation	Saves time by performing multiple exams without system shutdown
Temporary ID	Assigns temporary ID to facilitate rapid assessment
Hide patient ID	Instantly hide patient ID for education and presentation development
Live compare	Allows side-by-side display of live and previously captured image
Tissue-specific presets	Optimum clinical performance with minimum steps
Side-by-side M-mode and 2D	Facilitates lung imaging interpretation
Needle visualization	Enhanced needle display for line placements and other invasive procedures
QLAB quantification	Assessment and analysis capability
Remote reporting*	Remote access to Telexy Qpath** POCUS workflow solution directly from the CX50 POC

* Remote Reporting is available only with Telexy Qpath and is trademarked as Qview.

** Qpath is a trademark of Telexy Healthcare Inc.



The slim, lightweight CX50 POC is ergonomically designed to fit easily within your environment.

Designed for **your environment**



CX50 POC family of transducers

- S5-1 PureWave sector array
- X7-2t PureWave TEE
- C5-1 PureWave curved array
- L12-3 broadband linear array
- L15-7io broadband compact linear array
- C10-3v PureWave curved array

Remote Reporting – Telexy Qpath**

The Remote Reporting* feature provides clinicians remote access to the Telexy Qpath data management system. This feature allows clinicians to interact with the ultrasound images and Qpath worksheets directly from the CX50 POC. The ability to complete and approve ultrasound exam reports at the point-of-care uniquely enhances work flow.

The gold standard for security

Philips recognizes the importance of securing your ultrasound system and protecting your patient data. The security feature on the CX50 POC is a defense-in-depth strategy that comprises five layers: firewall, operating system hardening, malware protection, access controls, and patient data encryption. Each of these layers plays an important role in helping you thwart hackers, defend against malware, and prevent unauthorized access.

Education

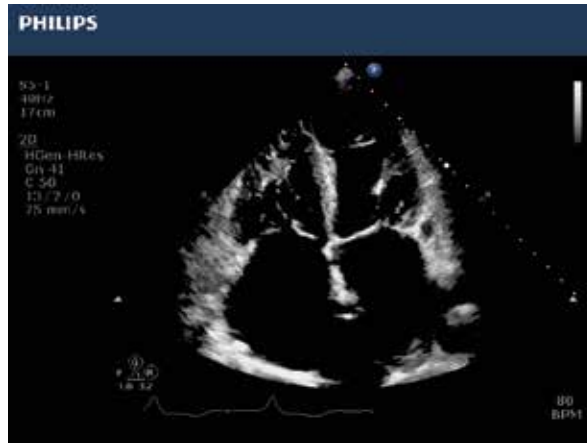
Philips offers a wide array of clinical and technical education resources. Talk with your local representative regarding the available programs that will best fit your needs. Visit our education webpage to view our on-line clinical tutorials:

www.philips.com/CCEMedication

* Remote Reporting is only available with Telexy Qpath and is trademarked as Qview.

** Qpath is a trademark of Telexy Healthcare Inc.

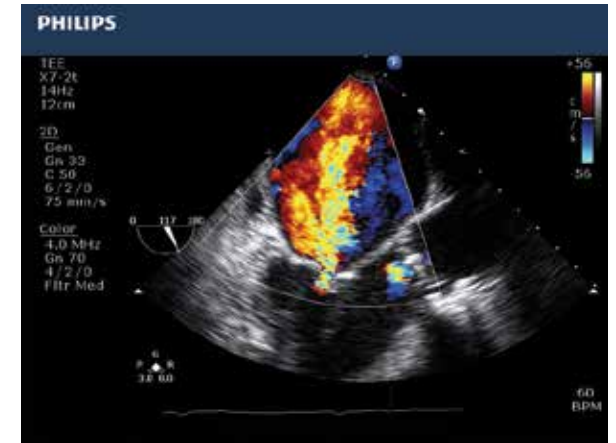
Philips **exceptional** image quality



Apical 4 - Pulmonary hypertension



Jugular vein access



TEE - Mitral regurgitation



Jugular vein catheter with clot



Hydronephrosis



Pleural effusion

Count on us as your patients count on you

The value of a Philips ultrasound system extends far beyond technology. With every CX50 POC system, you get access to our award-winning service organization,* competitive financing, and educational tools that help you get the most out of your system.**

Always there, always on

We work as one with your team to keep your CX50 POC system running smoothly.

On-cart transducer test provides confidence in your transducer quality

On-cart transducer test provides a non-phantom method to test CX50 POC transducers at any time, giving you confidence in your diagnostic information.

Remote service capabilities maximize efficiency

Easy, rapid technical and clinical support through remote desktop enables a virtual visit with a Philips expert.

Proactive monitoring solutions maximize uptime

Philips proactive monitoring increases system availability by predicting potential system disruptions and proactively acting on them, letting you focus on what is most important – your patients.



Immediate support request at your fingertips

The support request button allows you to enter a request directly from the control panel, for a fast and convenient communication mechanism with Philips experts without leaving your patient, minimizing workflow interruption.

Sharing risk, increasing the return on your investment

Partner with us to maximize utilization and uptime of your CX50 POC system.

Utilization reports

Data intelligence tools can help you make informed decisions to improve workflow, deliver quality patient care, and decrease the total cost of ownership. This ultrasound utilization tool provides individual transducer usage and the ability to sort by exam type.

Understanding your needs, designed for you

Our flexible RightFit Service Agreements, education offerings, and innovative financing solutions can be adapted to meet your needs and strategic priorities.

* Philips is rated number one in overall service performance for ultrasound for 23 consecutive years in the annual IMV ServiceTrak survey in the USA.

** Optional. Not all services available in all geographies; contact your Philips representative for more information. May require service contract.

© 2016 Koninklijke Philips N.V. All rights are reserved. Philips reserves the right to make changes in specifications and/or to discontinue any product at any time without notice or obligation and will not be liable for any consequences resulting from the use of this publication. Trademarks are the property of Koninklijke Philips N.V. or their respective owners.



www.philips.com/cc

Printed in The Netherlands.
4522 991 18261 * MAY 2016