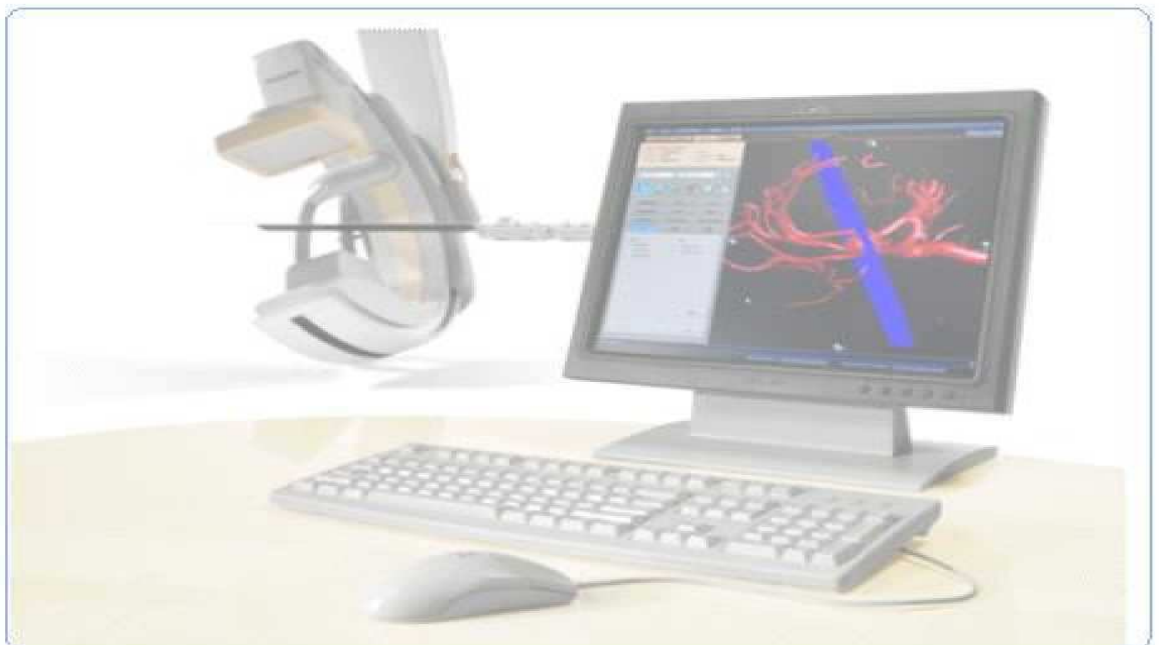


DICOM Conformance Statement

Application Annex:
Stentboost R4.2.5



Issued by:

Philips Medical Systems Nederland BV, a Philips Healthcare company,

P.O. Box 10.000
5680 DA Best
The Netherlands

Email: dicom@philips.com

Internet: <http://www.healthcare.philips.com/connectivity>

Document Number: ICAP-PF.0015387

Date: 02-March-2015

Table of Contents

1. INTRODUCTION	4
1.1. REVISION HISTORY	4
1.2. TERMINOLOGY	4
2. DATA SPECIFICATIONS	5
2.1. SUPPORTED IOD'S	5
2.1.1. Acceptance Criteria	5
2.1.2. Contents of Created IOD's	6
2.1.2.1. X-Ray Angiographic Image Storage SOP Class	6
2.1.2.2. Raw data Storage SOP class	9
2.1.2.1. Secondary Capture Image Storage SOP class	12
2.1.2.2. Multiframe True Color Secondary Capture Image Storage SOP class	14

1. Introduction

This DICOM Conformance Statement annex is applicable to the, later referred to as Stentboost Application. In general the Stentboost Application is the user environment for viewing and analyzing XA images. StentBoost is a simple, quick, and cost-effective tool to enhance stent visualization in the coronary arteries. With the StentBoost Subtract feature, physicians can even see the stent in relation to the vessel wall as they are working. This image can support physicians in placing the stent accurately the first time, can possibly shorten procedures, and potentially eliminate additional ones.

1.1. Revision History

The revision history below provides dates and differences among individual document versions.

Table 1: Revision History

Document Version	Date of Issue	Status	Description
00	02-March-2015	Final	

1.2. Terminology

DICOM	Digital Imaging and Communications in Medicine
IOD	Information Object Definition
UID	Unique Identifier
VR	Value Representation

2. Data Specifications

2.1. Supported IOD's

This section specifies each IOD accepted and / or created by Stentboost Application.

- ACCEPTED The applicable IOD is accepted for storage in the repository of the hosting platform and supported for import of Stentboost Application for viewing and analysis.
- CREATED Stentboost Application supports generation of derived data by using the applicable IOD and is able to store this data in the repository of the hosting platform.

Table 2: Supported IOD's

Name	IOD		Support	
	UID		ACCEPTED	CREATED
Raw Data Storage SOP Class	1.2.840.10008.5.1.4.1.1.66		Yes	Yes
X-Ray Angiographic Image Storage SOP Class	1.2.840.10008.5.1.4.1.1.12.1		Yes	Yes
Multiframe True Color Secondary Capture Image Storage SOP Class	1.2.840.10008.5.1.4.1.1.7.4		Yes	Yes
Secondary Capture Image Storage SOP Class	1.2.840.10008.5.1.4.1.1.7		Yes	Yes

2.1.1. Acceptance Criteria

Table 3: Accepted system models

Manufacturer	Modality	System Model Name(s)
Not applicable	Not applicable	Not applicable

Table 4: Accepted transfer syntaxes per IOD

IOD		Transfer Syntax	
Name	UID	Name	UID
Raw Data Storage SOP Class	1.2.840.10008.5.1.4.1.1.66	Implicit VR Little Endian	1.2.840.10008.1.2
		Explicit VR Big Endian	1.2.840.10008.1.2.2
		Explicit VR Little Endian	1.2.840.10008.1.2.1
		JPEG 2000 Image Compression	1.2.840.10008.1.2.4.91
		JPEG 2000 Image Compression (Lossless Only)	1.2.840.10008.1.2.4.90
		JPEG Baseline (Process 1)	1.2.840.10008.1.2.4.50
		JPEG Extended (Process 2 & 4)	1.2.840.10008.1.2.4.51
		JPEG Lossless, Non-Hierarchical, FOP (Process 14)	1.2.840.10008.1.2.4.70
		RLE Lossless	1.2.840.10008.1.2.5
		X-Ray Angiographic Image Storage SOP Class	1.2.840.10008.5.1.4.1.1.12.1
Explicit VR Big Endian	1.2.840.10008.1.2.2		
Explicit VR Little Endian	1.2.840.10008.1.2.1		
JPEG 2000 Image Compression	1.2.840.10008.1.2.4.91		
JPEG 2000 Image Compression (Lossless Only)	1.2.840.10008.1.2.4.90		
JPEG Baseline (Process 1)	1.2.840.10008.1.2.4.50		
JPEG Extended (Process 2 & 4)	1.2.840.10008.1.2.4.51		
JPEG Lossless, Non-Hierarchical, FOP (Process 14)	1.2.840.10008.1.2.4.70		
RLE Lossless	1.2.840.10008.1.2.5		
Multiframe True Color Secondary Capture Image Storage SOP Class	1.2.840.10008.5.1.4.1.1.7.4		
		Explicit VR Big Endian	1.2.840.10008.1.2.2
		Explicit VR Little Endian	1.2.840.10008.1.2.1

		JPEG 2000 Image Compression	1.2.840.10008.1.2.4.91
		JPEG 2000 Image Compression (Lossless Only)	1.2.840.10008.1.2.4.90
		JPEG Baseline (Process 1)	1.2.840.10008.1.2.4.50
		JPEG Extended (Process 2 & 4)	1.2.840.10008.1.2.4.51
		JPEG Lossless, Non-Hierarchical, FOP (Process 14)	1.2.840.10008.1.2.4.70
		RLE Lossless	1.2.840.10008.1.2.5
		Implicit VR Little Endian	1.2.840.10008.1.2
		Explicit VR Big Endian	1.2.840.10008.1.2.2
		Explicit VR Little Endian	1.2.840.10008.1.2.1
		JPEG 2000 Image Compression	1.2.840.10008.1.2.4.91
		JPEG 2000 Image Compression (Lossless Only)	1.2.840.10008.1.2.4.90
Secondary Capture Image Storage SOP Class	1.2.840.10008.5.1.4.1.1.7	JPEG Baseline (Process 1)	1.2.840.10008.1.2.4.50
		JPEG Extended (Process 2 & 4)	1.2.840.10008.1.2.4.51
		JPEG Lossless, Non-Hierarchical, FOP (Process 14)	1.2.840.10008.1.2.4.70
		RLE Lossless	1.2.840.10008.1.2.5

Table 5: Accepted attribute values

Attribute Name	Attribute Number	Values / Comments
Not applicable	Not applicable	Not applicable

2.1.2. Contents of Created IOD's

This section specifies in detail the attribute contents of created data objects. Attributes are grouped together by its corresponding module as specified by DICOM standard. Philips private attributes are excluded for specification.

Abbreviations used in the Module table for the column "Presence of Value" are:

- ALWAYS The attribute is always present with a value
- EMPTY The attribute is always present without any value (attribute sent zero length)
- VNAP The attribute is always present and its Value is Not Always Present (attribute sent zero length if no value is present)
- ANAP The attribute is present under specified condition – if present then it will always have a value

The abbreviations used in the Module table for the column "Source" are:

- AUTO The attribute value is generated automatically
- CONFIG The attribute value source is a configurable parameter
- COPY The attribute value source is another SOP instance
- FIXED The attribute value is hard-coded in the application
- IMPLICIT The attribute value source is a user-implicit setting
- MPPS The attribute value is the same as that use for Modality Performed Procedure Step
- MWL The attribute value source is a Modality Worklist
- USER The attribute value source is explicit user input

2.1.2.1. X-Ray Angiographic Image Storage SOP Class

Table 6: IOD of Created X-Ray Angiographic Image Storage Instances

Information Entity	Module	Presence Of Module
Patient	Patient Module	ALWAYS
Study	General Study Module	ALWAYS
Series	General Series Module	ALWAYS
Equipment	General Equipment Module	ALWAYS

Image	General Image Module	ALWAYS
	Image Pixel Module	ALWAYS
	Cine Module	ALWAYS
	Multi-Frame Module	ALWAYS
	X-Ray Image Module	ALWAYS
	X-Ray Acquisition Module	ALWAYS
	XA Positioner Module	ALWAYS
	VOI LUT Module	ALWAYS
	SOP Common Module	ALWAYS

Table 7: Patient Module

Attribute Name	Tag	VR	Value	Presence of Value	Source	Comment
Patient's Name	0010,0010	PN		VNAP		
Patient ID	0010,0020	LO		VNAP		
Patient's Birth Date	0010,0030	DA		VNAP		
Patient's Sex	0010,0040	CS		VNAP		

Table 8: General Study Module

Attribute Name	Tag	VR	Value	Presence of Value	Source	Comment
Study Date	0008,0020	DA		VNAP		
Study Time	0008,0030	TM		VNAP		
Accession Number	0008,0050	SH		VNAP		
Referring Physician's Name	0008,0090	PN		VNAP		
Study Instance UID	0020,000D	UI		ALWAYS		
Study ID	0020,0010	SH		VNAP		

Table 9: General Series Module

Attribute Name	Tag	VR	Value	Presence of Value	Source	Comment
Series Date	0008,0021	DA		ANAP		
Series Time	0008,0031	TM		ANAP		
Modality	0008,0060	CS		ALWAYS		
Performing Physician's Name	0008,1050	PN		ANAP		
Related Series Sequence	0008,1250	SQ		ANAP		
>Study Instance UID	0020,000D	UI		ALWAYS		
>Series Instance UID	0020,000E	UI		ALWAYS		
>Purpose of Reference Code Sequence	0040,A170	SQ		VNAP		
Series Instance UID	0020,000E	UI		ALWAYS		
Series Number	0020,0011	IS		VNAP		
Laterality	0020,0060	CS		ANAP		

Table 10: General Equipment Module

Attribute Name	Tag	VR	Value	Presence of Value	Source	Comment
Manufacturer	0008,0070	LO		VNAP		
Institution Name	0008,0080	LO		ANAP		
Station Name	0008,1010	SH		ANAP		
Manufacturer's Model Name	0008,1090	LO	Interventional Workspot	ANAP		
Device Serial Number	0018,1000	LO		ANAP		
Software Versions	0018,1020	LO	1.3.0	ANAP		

Table 11: General Image Module

Attribute Name	Tag	VR	Value	Presence of Value	Source	Comment
Instance Number	0020,0013	IS		VNAP		
Patient Orientation	0020,0020	CS		ANAP		
Icon Image Sequence	0088,0200	SQ		ANAP		
>Samples per Pixel	0028,0002	US		ALWAYS		
>Photometric Interpretation	0028,0004	CS		ALWAYS		
>Rows	0028,0010	US		ALWAYS		
>Columns	0028,0011	US		ALWAYS		
>Bits Allocated	0028,0100	US		ALWAYS		
>Bits Stored	0028,0101	US		ALWAYS		
>High Bit	0028,0102	US		ALWAYS		
>Pixel Representation	0028,0103	US		ALWAYS		
>Pixel Data	7FE0,0010	UN		ANAP		

Table 12: Image Pixel Module

Attribute Name	Tag	VR	Value	Presence of Value	Source	Comment
Rows	0028,0010	US		ALWAYS		
Columns	0028,0011	US		ALWAYS		
>Samples per Pixel	0028,0002	US		ALWAYS		
Photometric Interpretation	0028,0004	CS		ALWAYS		
Bits Allocated	0028,0100	US		ALWAYS		
Bits Stored	0028,0101	US		ALWAYS		
High Bit	0028,0102	US		ALWAYS		
Pixel Representation	0028,0103	US		ALWAYS		
Pixel Data	7FE0,0010	UN		ANAP		

Table 13: Cine Module

Attribute Name	Tag	VR	Value	Presence of Value	Source	Comment
Frame Time	0018,1063	DS		ANAP		

Table 14: Multi-Frame Module

Attribute Name	Tag	VR	Value	Presence of Value	Source	Comment
Number of Frames	0028,0008	IS		ALWAYS		
Frame Increment Pointer	0028,0009	AT		ALWAYS		

Table 15: X-Ray Image Module

Attribute Name	Tag	VR	Value	Presence of Value	Source	Comment
Image Type	0008,0008	CS		ALWAYS		
Samples per Pixel	0028,0002	US		ALWAYS		
Photometric Interpretation	0028,0004	CS		ALWAYS		
Frame Increment Pointer	0028,0009	AT		ANAP		
Bits Allocated	0028,0100	US		ALWAYS		
Bits Stored	0028,0101	US		ALWAYS		
High Bit	0028,0102	US		ALWAYS		
Pixel Representation	0028,0103	US		ALWAYS		
Pixel Intensity Relationship	0028,1040	CS		ALWAYS		

Table 16: X-Ray Acquisition Module

Attribute Name	Tag	VR	Value	Presence of Value	Source	Comment
KVP	0018,0060	DS		VNAP		
Exposure Time	0018,1150	IS		ANAP		
X-Ray Tube Current	0018,1151	IS		ANAP		
Radiation Setting	0018,1155	CS		ALWAYS		

Table 17: XA Positioner Module

Attribute Name	Tag	VR	Value	Presence of Value	Source	Comment
Positioner Motion	0018,1500	CS		ANAP		
Positioner Primary Angle	0018,1510	DS		VNAP		
Positioner Secondary Angle	0018,1511	DS		VNAP		

Table 18: VOI LUT Module

Attribute Name	Tag	VR	Value	Presence of Value	Source	Comment
Window Center	0028,1050	DS		ANAP		
Window Width	0028,1051	DS		ANAP		

Table 19: SOP Common Module

Attribute Name	Tag	VR	Value	Presence of Value	Source	Comment
Specific Character Set	0008,0005	CS	ISO_IR 100	CONDITIONAL		
SOP Class UID	0008,0016	UI		ALWAYS		
SOP Instance UID	0008,0018	UI		ALWAYS		
Instance Number	0020,0013	IS		ANAP		

2.1.2.2. Raw data Storage SOP class

Table 20: IOD of Created Raw Data Storage SOP Class Instances

Information Entity	Module	Presence Of Module
Patient	Patient Module	ALWAYS
Study	General Study Module	ALWAYS
Series	General Series Module	ALWAYS

Frame of Reference	Frame of Reference	OPTIONAL
Equipment	General Equipment Module	ALWAYS
Image	Acquisition Context Module	ALWAYS
	Raw Data Module	ALWAYS
	SOP Common Module	ALWAYS

Table 21 : Patient Module

Attribute Name	Tag	VR	Value	Presence of Value	Source	Comment
Patient's Name	0010,0010	PN		ALWAYS	AUTO	
Patient ID	0010,0020	LO		ALWAYS	AUTO	
Patient's Birth Date	0010,0030	DA		VNAP	AUTO	
Patient's Sex	0010,0040	CS		ALWAYS	AUTO	

Table 22 : General Study Module

Attribute Name	Tag	VR	Value	Presence of Value	Source	Comment
Study Date	0008,0020	DA		ALWAYS	AUTO	
Study Time	0008,0030	TM		ALWAYS	AUTO	
Referring Physician's Name	0008,0090	PN		VNAP	AUTO	
Study Instance UID	0020,000D	UI		ALWAYS	AUTO	
Study ID	0020,0010	SH		ALWAYS	AUTO	
Accession Number	0008,0050	SH		EMPTY	AUTO, USER	

Table 23 : General Series Module

Attribute Name	Tag	VR	Value	Presence of Value	Source	Comment
Series Date	0008,0021	DA		ALWAYS	AUTO	
Series Time	0008,0031	TM		ALWAYS	AUTO	
Modality	0008,0060	CS		ALWAYS	AUTO	
Performing Physicians' name	0008,1050	PN				
Related Series Sequence	0008,1250	SQ				
>Study Instance UID	0020,000D	UI				
>Series Instance UID	0020,000E	UI		ALWAYS	AUTO	
>Purpose of Reference Code Sequence	0040,A170	SQ				
Series Number	0020,0011	IS		ALWAYS	AUTO	
Laterality	0020,0060	CS		ANAP		

Table 24: Frame of Reference Module

Attribute Name	Tag	VR	Value	Presence of Value	Source	Comment
Frame of Reference UID	0020,0052	UI		ALWAYS	AUTO	
Position Reference Indicator	0020,1040	LO		VNAP	AUTO	

Table 25: General Equipment Module

Attribute Name	Tag	VR	Value	Presence of Value	Source	Comment
Manufacturer	0008,0070	LO	Philips Medical Systems	VNAP	FIXED	
Institution Name	0008,0080	LO		ANAP	USER	
Station Name	0008,1010	SH		ANAP		
Manufacturer's Model Name	0008,1090	LO	Interventional Workspot	ANAP	FIXED	
Device Serial Number	0018,1000	LO		ANAP	AUTO	

Software Version(s)	0018,1020	LO	1.3.0	ANAP	AUTO	
---------------------	-----------	----	-------	------	------	--

Table 26: Acquisition Context Module

Attribute Name	Tag	VR	Value	Presence of Value	Source	Comment
Acquisition Context Sequence	0040,0555	SQ		VNAP	AUTO	

Table 27: Raw Data Module

Attribute Name	Tag	VR	Value	Presence of Value	Source	Comment
Content Date	0008,0023	DA		ALWAYS	AUTO	
Content Time	0008,0033	TM		ALWAYS	AUTO	
Creator Version UID	0008,9123	UI		ALWAYS	AUTO	
Instance Number	0020,0013	IS		ANAP	AUTO	

Table 28: SOP Common Module

Attribute Name	Tag	VR	Value	Presence of Value	Source	Comment
SOP Class UID	0008,0016	UI	1.2.840.10008.5.1.4.1.1.66	ALWAYS	AUTO	
SOP Instance UID	0008,0018	UI		ALWAYS	AUTO	
Original Specialized SOP Class UID	0008,001B	UI		VNAP	AUTO	
Instance Creation Date	0008,0012	DA		VNAP	AUTO	
Instance Creation Time	0008,0013	TM		VNAP	AUTO	
Instance Number	0020,0013	IS		VNAP		

Table 29: Extended DICOM and private attributes for Raw Data Image Storage SOP class

Attribute Name	Tag	VR	Value	Presence of Value	Source	Comment
Date	0040,A121	DA		VNAP	AUTO	
Time	0040,A122	TM		VNAP	AUTO	
Private	2001,0011	LO		VNAP		
Private	2001,115F	SQ		VNAP		
>Laterality	0020,0060	CS		VNAP		
>Position Reference Indicator	0020,1040	LO		VNAP		
>Acquisition Context Sequence	0040,0555	SQ		VNAP		
>Institution Name	0008,0080	LO		VNAP		
>Referring Physician's Name	0008,0090	PN		VNAP		
>Patient's Birth Date	0010,0030	DA		VNAP		
>Patient's Sex	0010,0040	CS		VNAP		
>Device Serial Number	0018,1000	LO		VNAP		
>Distance Source to Detector	0018,1110	DS		VNAP		
>Requested Procedure ID	0040,1001	SH		VNAP		
>Private	2001,0010	LO		VNAP		
>Private	2001,1063	CS		VNAP		
>Private	2003,0020	LO		VNAP		
>Private	2003,2043	UL		VNAP		
>Private	2003,2044	LO		VNAP		
>Private	2003,2047	LO		VNAP		
>Private	2003,2084	SQ		VNAP		
>>Private	2003,0020	LO		VNAP		
>>Private	2003,2047	LO		VNAP		
>>Private	2003,2085	FD		VNAP		

>>Private	2003,2086	FD		VNAP		
>>Private	2003,2087	FD		VNAP		
>>Private	2003,2088	UI		VNAP		
>>Private	2003,2089	LO		VNAP		
>>Private	2003,208A	IS		VNAP		
>>Private	2003,208B	DS		VNAP		
>>Private	2003,208C	DS		VNAP		

2.1.2.1. Secondary Capture Image Storage SOP class

Table 30: IOD of Created Secondary Capture Image Storage SOP Class Instances

Information Entity	Module	Presence Of Module
Patient	Patient Module	ALWAYS
Study	General Study Module	ALWAYS
Series	General Series Module	ALWAYS
Equipment	General Equipment Module	CONDITIONAL
	SC Equipment Module	ALWAYS
Image	General Image Module	ALWAYS
	Image Pixel Module	ALWAYS
	SOP Common Module	ALWAYS
	Extended DICOM and private attributes	CONDITIONAL

Table 31: Patient Module

Attribute Name	Tag	VR	Value	Presence of Value	Source	Comment
Patient's Name	0010,0010	PN		ALWAYS	AUTO	
Patient ID	0010,0020	LO		ALWAYS	AUTO	
Patient's Birth Date	0010,0030	DA		ALWAYS	AUTO	
Patient's Sex	0010,0040	CS		ALWAYS	AUTO	

Table 32: General Study Module

Attribute Name	Tag	VR	Value	Presence of Value	Source	Comment
Study Date	0008,0020	DA		ALWAYS	AUTO	
Study Time	0008,0030	TM		ALWAYS	AUTO	
Accession Number	0008,0050	SH				
Referring Physician's Name	0008,0090	PN		VNAP	AUTO	
Study Instance UID	0020,000D	UI		ALWAYS	AUTO	
Study ID	0020,0010	SH		ALWAYS	AUTO	

Table 33: General Series Module

Attribute Name	Tag	VR	Value	Presence of Value	Source	Comment
Series Date	0008,0021	DA		ALWAYS	AUTO	
Series Time	0008,0031	TM		ALWAYS	AUTO	
Modality	0008,0060	CS		ALWAYS	AUTO	
Series Instance UID	0020,000E	UI		ALWAYS	AUTO	
Series Number	0020,0011	IS			AUTO	
Performed Procedure Step Start Date	0040,0244	DA		ALWAYS	AUTO	
Performed Procedure Step Start Time	0040,0245	TM		ALWAYS	AUTO	
Performed Procedure Step ID	0040,0253	SH		ALWAYS	AUTO	
Performed Procedure Step Description	0040,0254	LO		VNAP	AUTO	

Related Series Sequence	0008,1250	SQ		VNAP		
>Study Instance UID	0020,000D	UI		ALWAYS		
>Series Instance UID	0020,000E	UI		ALWAYS		
>Purpose of Reference Code Sequence	0040,A170	SQ		EMPTY		

Table 34: General Equipment Module

Attribute Name	Tag	VR	Value	Presence of Value	Source	Comment
Institution Name	0008,0080	LO		VNAP	AUTO	
Station Name	0008,1010	SH		ANAP		
Manufacturer's Model Name	0008,1090	LO	Interventional Workspot	ALWAYS	FIXED	
Software Version(s)	0018,1020	LO	1.3.0	ALWAYS	FIXED	

Table 35 : SC Equipment Module

Attribute Name	Tag	VR	Value	Presence of Value	Source	Comment
Modality	0008,0060	CS		ANAP		
Conversion Type	0008,0064	CS	WSD	ALWAYS		

Table 36: General Image Module

Attribute Name	Tag	VR	Value	Presence of Value	Source	Comment
Instance Number	0020,0013	IS				

Table 37: Image Pixel Module

Attribute Name	Tag	VR	Value	Presence of Value	Source	Comment
Samples per Pixel	0028,0002	US		ALWAYS		
Photometric Interpretation	0028,0004	CS		ALWAYS		
Planar Configuration	0028,0006	US		ANAP		
Rows	0028,0010	US		ALWAYS	AUTO	
Columns	0028,0011	US		ALWAYS	AUTO	
Bits Allocated	0028,0100	US	8	ALWAYS		
Bits Stored	0028,0101	US	8	ALWAYS		
High Bit	0028,0102	US	7	ALWAYS		
Pixel Representation	0028,0103	US	0000	ALWAYS	AUTO	
Pixel Data	7FE0,0010	OW/OB		ALWAYS	AUTO	

Table 38: SOP Common Module

Attribute Name	Tag	VR	Value	Presence of Value	Source	Comment
Specific Character Set	0008,0005	CS	ISO_IR 100	CONDITIONAL	FIXED	
SOP Class UID	0008,0016	UI	1.2.840.10008.5.1.4.1.1.7	ALWAYS	FIXED	
SOP Instance UID	0008,0018	UI		ALWAYS	AUTO	
Instance Creation Date	0008,0012	DA		VNAP	AUTO	
Instance Creation Time	0008,0013	TM		VNAP	AUTO	
Instance Number	0020,0013	IS		ANAP	AUTO	

Table 39 : Extended DICOM and private attributes for Secondary Capture Image Storage SOP Class Instances

Attribute Name	Tag	VR	Value	Presence of Value	Source	Comment
Private	2001,0010	LO		ANAP		
Private	2001,0011	LO		ANAP		
Private	2001,10c1	LO		ANAP		
Medical Alerts	0010,2000	LO		ANAP		
Allergies	0010,2110	LO		ANAP		
Pregnancy Status	0010,21C0	US		ANAP		
Requested Procedure Description	0032,1060	LO		ANAP		
Requested Contrast Agent	0032,1070	LO		ANAP		
Special Needs	0038,0050	LO		ANAP		
Patient State	0038,0500	LO		ANAP		
Private	2001,0010	LO		ANAP		
Private	2001,1063	CS		ANAP		
Private	2003,0020	LO		ANAP		
Private	2003,20C3	DT		ANAP		

2.1.2.2. Multiframe True Color Secondary Capture Image Storage SOP class

Table 40: IOD of Created Multiframe True Color Secondary Capture Image Storage SOP Class Instances

Information Entity	Module	Presence Of Module
Patient	Patient Module	ALWAYS
Study	General Study Module	ALWAYS
Series	General Series Module	ALWAYS
Equipment	General Equipment Module	CONDITIONAL
	SC Equipment Module	ALWAYS
Image	General Image Module	ALWAYS
	Image Pixel Module	ALWAYS
	Cine Module	CONDITIONAL
	Multi-Frame Module	ALWAYS
	Multi-Frame Functional Groups Module	OPTIONAL
	SC Multi-frame Image Module	ALWAYS
	SOP Common Module	ALWAYS
	Extended DICOM and private attributes	CONDITIONAL

Table 41: Patient Module

Attribute Name	Tag	VR	Value	Presence of Value	Source	Comment
Patient's Name	0010,0010	PN		ALWAYS	AUTO	
Patient ID	0010,0020	LO		ALWAYS	AUTO	
Patient's Birth Date	0010,0030	DA		ALWAYS	AUTO	
Patient's Sex	0010,0040	CS		ALWAYS	AUTO	

Table 42: General Study Module

Attribute Name	Tag	VR	Value	Presence of Value	Source	Comment
Study Date	0008,0020	DA		ALWAYS	AUTO	
Study Time	0008,0030	TM		ALWAYS	AUTO	
Accession Number	0008,0050	SH				
Referring Physician's Name	0008,0090	PN		VNAP	AUTO	
Study Instance UID	0020,000D	UI		ALWAYS	AUTO	

Study ID	0020,0010	SH		ALWAYS	AUTO	
----------	-----------	----	--	--------	------	--

Table 43: General Series Module

Attribute Name	Tag	VR	Value	Presence of Value	Source	Comment
Series Date	0008,0021	DA		ANAP	AUTO	
Series Time	0008,0031	TM		ANAP	AUTO	
Modality	0008,0060	CS		ALWAYS	AUTO	
Series Instance UID	0020,000E	UI		ALWAYS	AUTO	
Series Number	0020,0011	IS		ANAP	AUTO	
Performed Procedure Step Start Date	0040,0244	DA		ANAP	AUTO	
Performed Procedure Step Start Time	0040,0245	TM		ANAP	AUTO	
Performed Procedure Step ID	0040,0253	SH		ANAP	AUTO	
Related Series Sequence	0008,1250	SQ		ANAP		
>Study Instance UID	0020,000D	UI		ALWAYS		
>Series Instance UID	0020,000E	UI		ALWAYS		
>Purpose of Reference Code Sequence	0040,A170	SQ		ANAP		

Table 44: General Equipment Module

Attribute Name	Tag	VR	Value	Presence of Value	Source	Comment
Manufacturer	0008,0070	LO	Philips Medical Systems	VNAP	AUTO	
Station Name	0008,1010	SH		ANAP		
Manufacturer's Model Name	0008,1090	LO	Interventional Workspot	ALWAYS	FIXED	
Software Version(s)	0018,1020	LO	1.3.0	ALWAYS	FIXED	

Table 45 : SC Equipment Module

Attribute Name	Tag	VR	Value	Presence of Value	Source	Comment
Modality	0008,0060	CS		ANAP		
Conversion Type	0008,0064	CS	WSD	ALWAYS		

Table 46: General Image Module

Attribute Name	Tag	VR	Value	Presence of Value	Source	Comment
Instance Number	0020,0013	IS		VNAP		
Patient Orientation	0020,0020	CS		VNAP		
Burned in Annotation	0028,0301	CS		ANAP		

Table 47: Image Pixel Module

Attribute Name	Tag	VR	Value	Presence of Value	Source	Comment
Samples per Pixel	0028,0002	US		ALWAYS		
Photometric Interpretation	0028,0004	CS		ALWAYS		
Planar Configuration	0028,0006	US		ANAP		
Rows	0028,0010	US		ALWAYS	AUTO	
Columns	0028,0011	US		ALWAYS	AUTO	
Bits Allocated	0028,0100	US	8	ALWAYS		
Bits Stored	0028,0101	US	8	ALWAYS		
High Bit	0028,0102	US	7	ALWAYS		

Pixel Representation	0028,0103	US	0000	ALWAYS	AUTO	
Pixel Data	7FE0,0010	OW/OB		ALWAYS	AUTO	

Table 48: Cine Module

Attribute Name	Tag	VR	Value	Presence of Value	Source	Comment
Frame Time	0018,1063	DS		ALWAYS	AUTO	

Table 49: Multi-Frame Module

Attribute Name	Tag	VR	Value	Presence of Value	Source	Comment
Number of Frames	0028,0008	DS		ALWAYS	AUTO	
Frame Increment Pointer	0028,0009	AT		ALWAYS	AUTO	

Table 50: Multi-Frame Functional Groups Module

Attribute Name	Tag	VR	Value	Presence of Value	Source	Comment
Instance Number	0020,0013	IS		ALWAYS	AUTO	
Number of Frames	0028,0008	IS		ALWAYS	AUTO	

Table 51: SC Multi-Frame Image Module

Attribute Name	Tag	VR	Value	Presence of Value	Source	Comment
Frame Increment Pointer	0028,0009	AT		ALWAYS	AUTO	
Burned In Annotation	0028,0301	CS		ALWAYS	AUTO	

Table 52: SOP Common Module

Attribute Name	Tag	VR	Value	Presence of Value	Source	Comment
Specific Character Set	0008,0005	CS	ISO_IR 100	CONDITIONAL	FIXED	
SOP Class UID	0008,0016	UI	1.2.840.10008.5.1.4.1.1.7.4	ALWAYS	FIXED	
SOP Instance UID	0008,0018	UI		ALWAYS	AUTO	
Instance Creation Date	0008,0012	DA		ANAP	AUTO	
Instance Creation Time	0008,0013	TM		ANAP	AUTO	
Instance Number	0020,0013	IS		ANAP	AUTO	

Table 49 : Extended DICOM and private attributes for Secondary Capture Image Storage SOP Class Instances

Attribute Name	Tag	VR	Value	Presence of Value	Source	Comment
Private	2001,0010	LO		ANAP		
Private	2001,0011	LO		ANAP		
Private	2001,10c1	LO		ANAP		
Medical Alerts	0010,2000	LO		ANAP		
Allergies	0010,2110	LO		ANAP		
Pregnancy Status	0010,21C0	US		ANAP		
Requested Procedure Description	0032,1060	LO		ANAP		
Requested Contrast Agent	0032,1070	LO		ANAP		
Special Needs	0038,0050	LO		ANAP		
Patient State	0038,0500	LO		ANAP		

Private	2001,0010	LO		ANAP		
Private	2001,1063	CS		ANAP		
Private	2003,0020	LO		ANAP		
Private	2003,20C3	DT		ANAP		