



# DICOM Conformance Statement

iSite PACS 3.6

CREF4.09-81  
Apr 29 2008



## Radiology Informatics

### DICOM Conformance Statement

iSite PACS 3.6

CREF4.09-81

Apr 29 2008

#### **Philips Healthcare**

is part of  
Royal Philips Electronics  
[www.medical.philips.com](http://www.medical.philips.com)  
[medical@philips.com](mailto:medical@philips.com)

#### **North America**

Philips Healthcare Informatics  
Radiology Informatics Business Unit  
4100 East Third Ave., Suite 101  
Foster City, CA 94404  
USA

#### **Europe**

Philips Medical Systems Nederland B.V.  
PMS Quality & Regulatory Affairs Europe  
Veenpluis 4-6  
5684 PC Best  
The Netherlands

Copyright © 2007 Koninklijke Philips Electronics N.V.  
All rights reserved. iSite and iSyntax are registered trademarks of Koninklijke Philips Electronics N.V.

## Table of Contents

<b>1</b>	<b>Introduction .....</b>	<b>3</b>
<b>2</b>	<b>Abbreviations and Symbols .....</b>	<b>3</b>
<b>3</b>	<b>Implementation Model .....</b>	<b>4</b>
<b>3.1</b>	<b>Application Data Flow Diagram .....</b>	<b>4</b>
<b>3.2</b>	<b>Functional Definitions of AEs .....</b>	<b>5</b>
<b>3.3</b>	<b>Sequencing of Real-World Activities .....</b>	<b>5</b>
<b>4</b>	<b>AE Specifications .....</b>	<b>5</b>
<b>4.1</b>	<b>iSite DICOM Server Storage AE Specification .....</b>	<b>5</b>
4.1.1	Association Establishment Policies .....	8
4.1.2	Association Initiation by Real-World Activity .....	9
4.1.3	Association Acceptance Policy .....	28
<b>4.2</b>	<b>iSite DICOM QRSCP AE Specification .....</b>	<b>87</b>
4.2.1	Association Establishment Policies .....	88
4.2.2	Association Initiation by Real-World Activity .....	88
4.2.3	Association acceptance policy .....	88
<b>4.3</b>	<b>iSite Worklist Server AE Specification .....</b>	<b>93</b>
4.3.1	Association Establishment Policies .....	93
4.3.2	Association Initiation by Real-World Activity .....	93
4.3.3	Association Acceptance Policy .....	94
<b>4.4</b>	<b>iSite Radiology Client AE Specification .....</b>	<b>100</b>
4.4.1	Association Establishment Policies .....	100
4.4.2	Association Initiation by Real-World Activity .....	101
4.4.3	Association Acceptance Policy .....	103
<b>5</b>	<b>Communication Profiles .....</b>	<b>103</b>
<b>5.1</b>	<b>Supported Communication Stacks (Parts 8,9) .....</b>	<b>103</b>
5.1.1	TCP/IP Stack .....	103
5.1.2	API .....	103
<b>5.2</b>	<b>Physical Media Support .....</b>	<b>103</b>
<b>6</b>	<b>Extensions/Specializations/Private Specifications .....</b>	<b>104</b>
<b>6.1</b>	<b>Standard Extended/Specialized/Private SOPs .....</b>	<b>104</b>
<b>6.2</b>	<b>Private Transfer Syntaxes .....</b>	<b>104</b>

**7 Configuration ..... 104**

**8 Support of Extended Character Sets..... 104**

**9 Codes and Controlled Terminology ..... 104**

**10 Security Profiles..... 104**

## 1 Introduction

The Philips iSite Picture Archiving and Communication System (PACS) product is a medical image and information distribution system designed for integration into a medical institution's existing healthcare network. The product utilizes the medical industry standard DICOM 3.0 protocol to exchange information with other DICOM compliant devices on the network. The primary use of the DICOM protocol within the iSite product is for local and remote storage of images, remote printing of images, remote query of image storage related information and local query of modality worklist information.

## 2 Abbreviations and Symbols

Frequently used abbreviations or acronyms in this document are defined in the table below. All other abbreviations are defined at its first use in this document by the abbreviation followed by its full meaning enclosed in parentheses.

Term	Meaning
AE	Application Entity
API	Application Programming Interface
CT	Computed Tomography
DICOM	Digital Imaging and Communications in Medicine
HIS	Hospital Information System
RIS	Radiology Information System
MR	Magnetic Resonance
MWS	Modality Worklist Server
PDU	Protocol Data Unit
QRSCP	Query/Retrieve Service Class Provider
RLE	Run Length Encoded
RT	Radiotherapy
SCP	Service Class Provider
SCU	Service Class User
SOP	Service Object Pair
TCP/IP	Transmission Control Protocol/Internet Protocol

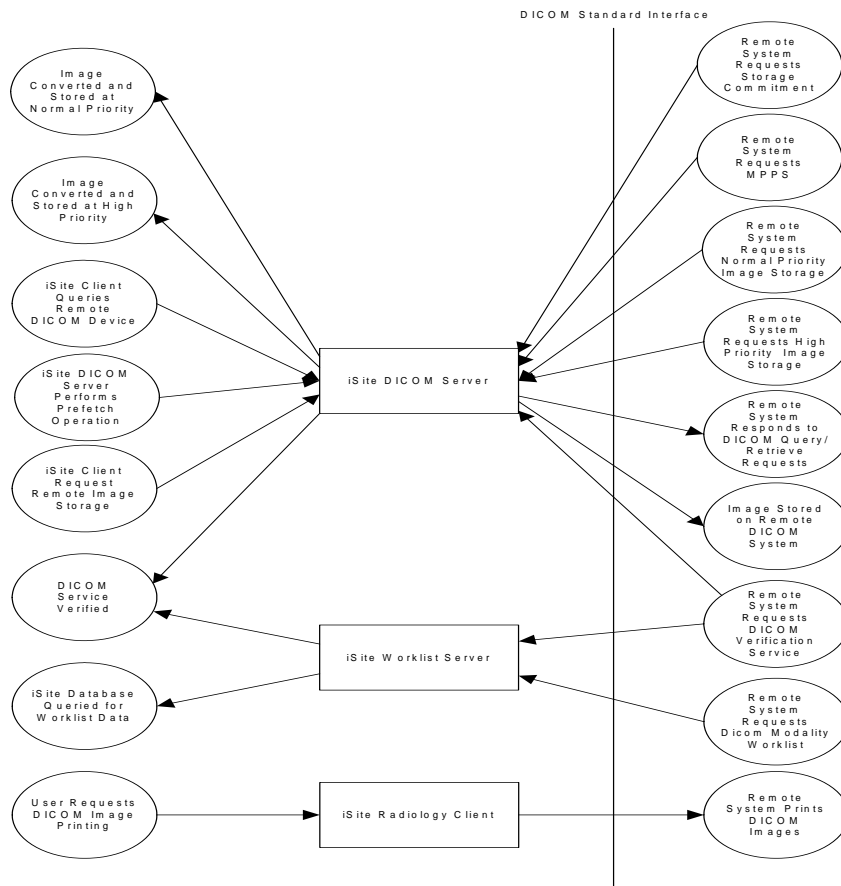
Term	Meaning
UID	Unique Identifier
VR	Value Representation

### 3 Implementation Model

The iSite system consists of integrated client and server applications within the Philips product line. This system provides DICOM compliant interfaces for Storage, Verification, Query/Retrieve, Printing and Modality Worklist services.

#### 3.1 Application Data Flow Diagram

The iSite DICOM Server, iSite Worklist Server, and iSite Radiology Client Application Entities are all integrated parts of the iSite product.



### 3.2 Functional Definitions of AEs

The iSite DICOM Server can both initiate and receive DICOM association requests. It runs as a Windows 2003 Server service and will automatically be started as part of the operating system. Once started, the iSite DICOM Server will wait for another application to connect to its DICOM Storage service at the presentation address configured for its high and low priority Application Entity Titles. iSite client applications also have the ability to initiate DICOM associations by the iSite DICOM Server to remote DICOM devices for Storage and Query/Retrieve services.

The iSite Worklist Server runs as a Windows 2003 Server service and will be automatically started as part of the operating system. Once started, the iSite Worklist Server will wait for another application to connect to its DICOM Modality Worklist service at the presentation address configured.

The iSite Radiology Client will initiate DICOM associations for DICOM Printing services on an as needed basis dependent upon interactive requests from users of the system.

### 3.3 Sequencing of Real-World Activities

Not Applicable.

## 4 AE Specifications

### 4.1 iSite DICOM Server Storage AE Specification

The iSite DICOM Server Storage AE provides standard conformance to the following DICOM V3.0 SOP class in the roles specified:

**Table 1: iSite DICOM Server Storage AE Standard Conformance**

SOP Class Name	SOP Class UID	Role
Verification SOP Class	1.2.840.10008.1.1	SCP
Storage Commitment Push Model SOP Class	1.2.840.10008.1.20.1	SCP
Modality Performed Procedure Step SOP Class	1.2.840.10008.3.1.2.3.3	SCP
Stored Print Storage	1.2.840.10008.5.1.1.27	SCU
Hardcopy Grayscale Image Storage	1.2.840.10008.5.1.1.29	SCU,SCP
Hardcopy Color Image Storage	1.2.840.10008.5.1.1.30	SCU,SCP
Computed Radiography Image Storage	1.2.840.10008.5.1.4.1.1.1	SCU,SCP
Digital X-Ray Image Storage - For Presentation	1.2.840.10008.5.1.4.1.1.1.1	SCU,SCP
Digital X-Ray Image Storage - For Processing	1.2.840.10008.5.1.4.1.1.1.1.1	SCU,SCP
Digital Mammography Image Storage - For Presentation	1.2.840.10008.5.1.4.1.1.1.2	SCU,SCP
Digital Mammography Image Storage - For Processing	1.2.840.10008.5.1.4.1.1.1.2.1	SCU,SCP
Digital Intra-oral X-Ray Image Storage - For Presentation	1.2.840.10008.5.1.4.1.1.1.3	SCU,SCP

SOP Class Name	SOP Class UID	Role
Digital Intra-oral X-Ray Image Storage - For Processing	1.2.840.10008.5.1.4.1.1.1.3.1	SCU,SCP
Standalone Modality LUT Storage	1.2.840.10008.5.1.4.1.1.10	SCU,SCP
Standalone VOI LUT Storage	1.2.840.10008.5.1.4.1.1.11	SCU,SCP
Grayscale Softcopy Presentation State Storage SOP Class	1.2.840.10008.5.1.4.1.1.11.1	SCU,SCP
X-Ray Angiographic Image Storage	1.2.840.10008.5.1.4.1.1.12.1	SCU,SCP
X-Ray Radiofluoroscopic Image Storage	1.2.840.10008.5.1.4.1.1.12.2	SCU,SCP
X-Ray Angiographic Bi-Plane Image Storage	1.2.840.10008.5.1.4.1.1.12.3	SCU,SCP
Positron Emission Tomography Image Storage	1.2.840.10008.5.1.4.1.1.128	SCU,SCP
Standalone PET Curve Storage	1.2.840.10008.5.1.4.1.1.129	SCU,SCP
CT Image Storage	1.2.840.10008.5.1.4.1.1.2	SCU,SCP
Nuclear Medicine Image Storage	1.2.840.10008.5.1.4.1.1.20	SCU,SCP
Ultrasound Multi-Frame Image Storage (Retired)	1.2.840.10008.5.1.4.1.1.3	SCU,SCP
Ultrasound Multi-Frame Image Storage	1.2.840.10008.5.1.4.1.1.3.1	SCU,SCP
MR Image Storage	1.2.840.10008.5.1.4.1.1.4	SCU,SCP
Enhance MR Image Storage	1.2.840.10008.5.1.4.1.1.4.1	SCU,SCP
MR Spectroscopy Storage	1.2.840.10008.5.1.4.1.1.4.2	SCU,SCP
RT Image Storage	1.2.840.10008.5.1.4.1.1.481.1	SCU,SCP
RT Dose Storage	1.2.840.10008.5.1.4.1.1.481.2	SCU,SCP
RT Structure Set Storage	1.2.840.10008.5.1.4.1.1.481.3	SCU,SCP
RT Beams Treatment Record Storage	1.2.840.10008.5.1.4.1.1.481.4	SCU,SCP
RT Plan Storage	1.2.840.10008.5.1.4.1.1.481.5	SCU,SCP
RT Brachy Treatment Record Storage	1.2.840.10008.5.1.4.1.1.481.6	SCU,SCP
RT Treatment Summary Record Storage	1.2.840.10008.5.1.4.1.1.481.7	SCU,SCP
Nuclear Medicine Image Storage (Retired)	1.2.840.10008.5.1.4.1.1.5	SCU,SCP
Ultrasound Image Storage (Retired)	1.2.840.10008.5.1.4.1.1.6	SCU,SCP
Ultrasound Image Storage	1.2.840.10008.5.1.4.1.1.6.1	SCU,SCP
Raw Data Storage	1.2.840.10008.5.1.4.1.1.66	SCU,SCP
Secondary Capture Image Storage	1.2.840.10008.5.1.4.1.1.7	SCU,SCP
Multi-frame Single Bit Secondary Capture Image Storage	1.2.840.10008.5.1.4.1.1.7.1	SCU,SCP
Multi-frame Grayscale Byte SC Image Storage	1.2.840.10008.5.1.4.1.1.7.2	SCU,SCP
Multi-frame Grayscale Word Secondary Capture Image Storage	1.2.840.10008.5.1.4.1.1.7.3	SCU,SCP
Mulfi-frame True Color Secondary Capture Image Storage	1.2.840.10008.5.1.4.1.1.7.4	SCU,SCP
VL Endoscopic Image Storage	1.2.840.10008.5.1.4.1.1.77.1.1	SCU,SCP
VL Microscopic Image Storage	1.2.840.10008.5.1.4.1.1.77.1.2	SCU,SCP



SOP Class Name	SOP Class UID	Role
VL Slide-Coordinates Microscopic Image Storage	1.2.840.10008.5.1.4.1.1.77.1.3	SCU,SCP
VL Photographic Image Storage	1.2.840.10008.5.1.4.1.1.77.1.4	SCU,SCP
Standalone Overlay Storage	1.2.840.10008.5.1.4.1.1.8	SCU,SCP
Basic Text Structured Reporting SOP Class	1.2.840.10008.5.1.4.1.1.88.11	SCU,SCP
Enhanced Structured Reporting SOP Class	1.2.840.10008.5.1.4.1.1.88.22	SCU,SCP
Comprehensive Structured Reporting SOP Class	1.2.840.10008.5.1.4.1.1.88.33	SCU,SCP
Mammography CAD SR SOP Class	1.2.840.10008.5.1.4.1.1.88.50	SCU,SCP
Key Object Selection Document	1.2.840.10008.5.1.4.1.1.88.59	SCU,SCP
Chest CAD SR Storage	1.2.840.10008.5.1.4.1.1.88.65	SCU,SCP
Standalone Curve Storage	1.2.840.10008.5.1.4.1.1.9	SCU,SCP
12-lead ECG Waveform Storage	1.2.840.10008.5.1.4.1.1.9.1.1	SCU,SCP
General ECG Waveform Storage	1.2.840.10008.5.1.4.1.1.9.1.2	SCU,SCP
Ambulatory ECG Waveform Storage	1.2.840.10008.5.1.4.1.1.9.1.3	SCU,SCP
Hemodynamic Waveform Storage	1.2.840.10008.5.1.4.1.1.9.2.1	SCU,SCP
Cardiac Electrophysiology Waveform Storage	1.2.840.10008.5.1.4.1.1.9.3.1	SCU,SCP
Basic Voice Audio Waveform Storage	1.2.840.10008.5.1.4.1.1.9.4.1	SCU,SCP
Patient Root Query/Retrieve Information Model - FIND	1.2.840.10008.5.1.4.1.2.1.1	SCU,SCP
Patient Root Query/Retrieve Information Model - MOVE	1.2.840.10008.5.1.4.1.2.1.2	SCU,SCP
Study Root Query/Retrieve Information Model - FIND	1.2.840.10008.5.1.4.1.2.2.1	SCU,SCP
Study Root Query/Retrieve Information Model - MOVE	1.2.840.10008.5.1.4.1.2.2.2	SCU,SCP
Patient/Study Only Query/Retrieve Information Model - FIND	1.2.840.10008.5.1.4.1.2.3.1	SCU,SCP
Patient/Study Only Query/Retrieve Information Model - MOVE	1.2.840.10008.5.1.4.1.2.3.2	SCU,SCP
GE Nuclear Medicine private SOP Class	1.2.840113619.4.27	SCU,SCP
Philips Private Gyroscan MR Spectrum	1.3.46.670589.11.0.0.12.1	SCU,SCP
Philips Private Gyroscan MR Serie Data	1.3.46.670589.11.0.0.12.2	SCU,SCP
Philips Private Specialized XA Image	1.3.46.670589.2.3.1.1	SCU,SCP
Philips Private CX Image Storage	1.3.46.670589.2.4.1.1	SCU,SCP
Philips iE33 private 3D Object Storage	1.3.46.670589.2.5.1.1	SCU,SCP
Philips Private Volume Storage	1.3.46.670589.5.0.1	SCU,SCP
Philips Private Volume Image Reference	1.3.46.670589.5.0.1.1	SCU,SCP
Philips Private MR Synthetic Image Storage	1.3.46.670589.5.0.10	SCU,SCP
Philips Private MR Cardio Analysis Storage	1.3.46.670589.5.0.11	SCU,SCP
Philips Private MR Cardio Analysis Data	1.3.46.670589.5.0.11.1	SCU,SCP
Philips Private CX Synthetic Image Storage	1.3.46.670589.5.0.12	SCU,SCP

SOP Class Name	SOP Class UID	Role
Philips Private Perfusion Image Reference	1.3.46.670589.5.0.13	SCU,SCP
Philips Private Perfusion Analysis Data	1.3.46.670589.5.0.14	SCU,SCP
Philips Private 3D Object Storage	1.3.46.670589.5.0.2	SCU,SCP
Philips Private 3D Object 2 Storage	1.3.46.670589.5.0.2.1	SCU,SCP
Philips Private Surface Storage	1.3.46.670589.5.0.3	SCU,SCP
Philips Private Surface 2 Storage	1.3.46.670589.5.0.3.1	SCU,SCP
Philips Private Composite Object Storage	1.3.46.670589.5.0.4	SCU,SCP
Philips Private MR Cardio Profile	1.3.46.670589.5.0.7	SCU,SCP
Philips Private MR Cardio	1.3.46.670589.5.0.8	SCU,SCP
Philips Private CT Synthetic Image Storage	1.3.46.670589.5.0.9	SCU,SCP

**4.1.1 Association Establishment Policies**

**4.1.1.1 General**

The iSite DICOM Server application will request associations and accept associations for DICOM Storage and Query/Retrieve. The iSite DICOM Server application supports a maximum PDU size of 63KB.

**4.1.1.2 Number of Associations**

The iSite DICOM Server application supports the initiation of a configurable number of simultaneous associations. The default is “3” for Storage Service related transactions and “1” for Query/Retrieve Service related transactions.

The iSite DICOM Server application has no configurable upper limit on the number of simultaneous associations that it will accept. The upper limit of accepted associations is limited by the hardware platform and overall system performance requirements.

**4.1.1.3 Asynchronous Nature**

The iSite DICOM Server application does not support negotiation of multiple outstanding transactions.

**4.1.1.4 Implementation Identifying Information**

The iSite DICOM Server uses the following implementation identifying information.

**Table 2: iSite DICOM Server Implementation Identifying Information**

Implementation Class UID	2.16.840.1.114151.100.1.1
--------------------------	---------------------------

**4.1.2 Association Initiation by Real-World Activity**

**4.1.2.1 Real World Activity – iSite Client Queries Remote DICOM Device**

**4.1.2.1.1 Associated Real-World Activity**

iSite client applications use the iQuery tool of the iSite DICOM Server to initiate and manage DICOM associations with remote Application Entities that support the DICOM Query/Retrieve Service as a Service Class Provider. The iQuery tool allows iSite client applications to interact with the iSite DICOM Server via a proprietary interface. The iSite DICOM Server’s iQuery tool is an interactive end-user application and will generate DICOM transactions based upon end-user initiated activities.

**4.1.2.1.2 Proposed Presentation Contexts**

**Table 3: Proposed Presentation Contexts for iSite DICOM Server and Real-World Activity – iSite Client Queries Remote DICOM Device**

Presentation Context Table					
Abstract Syntax		Transfer Syntax		Role	Extended Negotiation
Name	UID	Name List	UID List		
Patient Root Query/Retrieve Information Model - FIND	1.2.840.10008.5.1.4.1.2.1.1	Implicit VR Little Endian Transfer Syntax	1.2.840.10008.1.2	SCU	None
		Explicit VR Little Endian Transfer Syntax	1.2.840.10008.1.2.1	SCU	None
		Explicit VR Big Endian Transfer Syntax	1.2.840.10008.1.2.2	SCU	None
Patient Root Query/Retrieve Information Model - MOVE	1.2.840.10008.5.1.4.1.2.1.2	Implicit VR Little Endian Transfer Syntax	1.2.840.10008.1.2	SCU	None
		Explicit VR Little Endian Transfer Syntax	1.2.840.10008.1.2.1	SCU	None
		Explicit VR Big Endian Transfer Syntax	1.2.840.10008.1.2.2	SCU	None
Study Root Query/Retrieve Information Model - FIND	1.2.840.10008.5.1.4.1.2.2.1	Implicit VR Little Endian Transfer Syntax	1.2.840.10008.1.2	SCU	None
		Explicit VR Little Endian Transfer Syntax	1.2.840.10008.1.2.1	SCU	None
		Explicit VR Big Endian Transfer Syntax	1.2.840.10008.1.2.2	SCU	None

Presentation Context Table					
Abstract Syntax		Transfer Syntax		Role	Extended Negotiation
Name	UID	Name List	UID List		
Study Root Query/Retrieve Information Model - MOVE	1.2.840.10008.5.1.4.1.2.2.2	Implicit VR Little Endian Transfer Syntax	1.2.840.10008.1.2	SCU	None
		Explicit VR Little Endian Transfer Syntax	1.2.840.10008.1.2.1	SCU	None
		Explicit VR Big Endian Transfer Syntax	1.2.840.10008.1.2.2	SCU	None
Patient/Study Only Query/Retrieve Information Model - FIND	1.2.840.10008.5.1.4.1.2.3.1	Implicit VR Little Endian Transfer Syntax	1.2.840.10008.1.2	SCU	None
		Explicit VR Little Endian Transfer Syntax	1.2.840.10008.1.2.1	SCU	None
		Explicit VR Big Endian Transfer Syntax	1.2.840.10008.1.2.2	SCU	None
Patient/Study Only Query/Retrieve Information Model - MOVE	1.2.840.10008.5.1.4.1.2.3.2	Implicit VR Little Endian Transfer Syntax	1.2.840.10008.1.2	SCU	None
		Explicit VR Little Endian Transfer Syntax	1.2.840.10008.1.2.1	SCU	None
		Explicit VR Big Endian Transfer Syntax	1.2.840.10008.1.2.2	SCU	None

**4.1.2.1.3 SOP Specific Conformance Statement for SOP Class 'Patient Root Query/Retrieve Information Model - FIND'**

All DICOM attributes specified as valid keys for C-FIND messages are legal for Philips iSite Server query keys as well. In practice, the set actually used is defined by client-side requests so only a pertinent subset would be used. Table 4 lists the essential tags that Philips iSite Server will expect any Query/Retrieve SCP to support for the Patient Root Information Model.

**Table 4: DICOM data elements supported for SOP Class 'Patient Root Query/Retrieve Information Model - FIND'**

Level	Description	Tag	Type
Patient	Patient's Name	(0010,0010)	R
Patient	Patient ID	(0010,0020)	U
Study	Study ID	(0020,0010)	R

Level	Description	Tag	Type
Study	Study Instance UID	(0020,000D)	U
Study	Study Date	(0020,0020)	R
Study	Study Time	(0020,0030)	R
Study	Accession Number	(0008,0050)	R
Study	Referring Physician	(0008,0090)	O
Study	Study Description	(0008,1030)	O
Series	Modality	(0008,0060)	R
Series	Series Number	(0020,0011)	R
Series	Body Part Examined	(0018,0015)	O
Series	Series Instance UID	(0020,000E)	U

**4.1.2.1.4 SOP Specific Conformance Statement for SOP Class “Study Root Query/Retrieve Information Model – FIND”**

All DICOM attributes specified as valid keys for C-FIND messages are legal for Philips iSite Server query keys as well. In practice, the set actually used is defined by client-side requests so only a pertinent subset would be used. Table 5 lists the essential tags that Philips iSite Server will expect any Query/Retrieve SCP to support for the Study Root Information Model.

**Table 5: DICOM data elements supported for SOP Class ‘Study Root Query/Retrieve Information Model - FIND’**

Level	Description	Tag	Type
Study	Patient’s Name	(0010,0010)	R
Study	Patient ID	(0010,0020)	U
Study	Study ID	(0020,0010)	R
Study	Study Instance UID	(0020,000D)	U
Study	Study Date	(0020,0020)	R
Study	Study Time	(0020,0030)	R
Study	Accession Number	(0008,0050)	R
Study	Referring Physician	(0008,0090)	O
Study	Study Description	(0008,1030)	O
Series	Modality	(0008,0060)	R

Level	Description	Tag	Type
Series	Series Number	(0020,0011)	R
Series	Body Part Examined	(0018,0015)	O
Series	Series Instance UID	(0020,000E)	U

**4.1.2.1.5 SOP Specific Conformance Statement for SOP Class “Patient/Study Only Query/Retrieve Information Model – FIND”**

All DICOM attributes specified as valid keys for C-FIND messages are legal for Philips iSite Server query keys as well. In practice the set actually used is defined by client-side requests so only a pertinent subset would be used. Table 6 lists the essential tags that Philips iSite Server will expect any Query/Retrieve SCP to support for the Patient/Study Only Information Model.

**Table 6: DICOM data elements supported for SOP Class 'Patient Study Only Query/Retrieve Information Model - FIND'**

Level	Description	Tag	Type
Patient	Patient’s Name	(0010,0010)	R
Patient	Patient ID	(0010,0020)	U
Study	Study Date	(0020,0020)	R
Study	Study Time	(0020,0030)	R
Study	Accession Number	(0008,0050)	R
Study	Referring Physician	(0008,0090)	O
Study	Study Description	(0008,1030)	O
Study	Study ID	(0020,0010)	R
Study	Study Instance UID	(0020,000D)	U

**4.1.2.2 Real World Activity – iSite Client Requests Remote Image Storage**

**4.1.2.2.1 Associated Real-World Activity**

iSite client applications use the iExport tool of the iSite DICOM Server to initiate and manage DICOM associations with remote Application Entities that support the DICOM Storage Service as a Service Class Provider. The iExport tool allows iSite client applications to interact with the iSite DICOM Server via a proprietary interface. The iSite DICOM Server’s iExport tool is an interactive end-user application and will generate DICOM transactions based upon end-user initiated activities.

4.1.2.2.2 Proposed Presentation Contexts

Table 7: Proposed Presentation Contexts for iSite DICOM Server and Real-World Activity – iSite Client Requests Remote Image Storage

Presentation Context Table					
Abstract Syntax		Transfer Syntax		Role	Extended Negotiation
Name	UID	Name List	UID List		
Hardcopy Grayscale Image Storage	1.2.840.10008.5.1.1.29	Implicit VR Little Endian Transfer Syntax	1.2.840.10008.1.2	SCU	None
		Explicit VR Little Endian Transfer Syntax	1.2.840.10008.1.2.1	SCU	None
		Explicit VR Big Endian Transfer Syntax	1.2.840.10008.1.2.2	SCU	None
Hardcopy Color Image Storage	1.2.840.10008.5.1.1.30	Implicit VR Little Endian Transfer Syntax	1.2.840.10008.1.2	SCU	None
		Explicit VR Little Endian Transfer Syntax	1.2.840.10008.1.2.1	SCU	None
		Explicit VR Big Endian Transfer Syntax	1.2.840.10008.1.2.2	SCU	None
Computed Radiography Image Storage	1.2.840.10008.5.1.4.1.1.1	Implicit VR Little Endian Transfer Syntax	1.2.840.10008.1.2	SCU	None
		Explicit VR Little Endian Transfer Syntax	1.2.840.10008.1.2.1	SCU	None
		Explicit VR Big Endian Transfer Syntax	1.2.840.10008.1.2.2	SCU	None
Digital X-Ray Image Storage - For Presentation	1.2.840.10008.5.1.4.1.1.1.1	Implicit VR Little Endian Transfer Syntax	1.2.840.10008.1.2	SCU	None
		Explicit VR Little Endian Transfer Syntax	1.2.840.10008.1.2.1	SCU	None
		Explicit VR Big Endian Transfer Syntax	1.2.840.10008.1.2.2	SCU	None
Digital X-Ray Image Storage - For Processing	1.2.840.10008.5.1.4.1.1.1.1.1	Implicit VR Little Endian Transfer Syntax	1.2.840.10008.1.2	SCU	None

Presentation Context Table					
		Explicit VR Little Endian Transfer Syntax	1.2.840.10008.1.2.1	SCU	None
		Explicit VR Big Endian Transfer Syntax	1.2.840.10008.1.2.2	SCU	None
Digital Mammography Image Storage - For Presentation	1.2.840.10008.5.1.4.1.1.1.2	Implicit VR Little Endian Transfer Syntax	1.2.840.10008.1.2	SCU	None
		Explicit VR Little Endian Transfer Syntax	1.2.840.10008.1.2.1	SCU	None
		Explicit VR Big Endian Transfer Syntax	1.2.840.10008.1.2.2	SCU	None
Digital Mammography Image Storage - For Processing	1.2.840.10008.5.1.4.1.1.1.2.1	Implicit VR Little Endian Transfer Syntax	1.2.840.10008.1.2	SCU	None
		Explicit VR Little Endian Transfer Syntax	1.2.840.10008.1.2.1	SCU	None
		Explicit VR Big Endian Transfer Syntax	1.2.840.10008.1.2.2	SCU	None
Digital Intra-oral X-Ray Image Storage - For Presentation	1.2.840.10008.5.1.4.1.1.1.3	Implicit VR Little Endian Transfer Syntax	1.2.840.10008.1.2	SCU	None
		Explicit VR Little Endian Transfer Syntax	1.2.840.10008.1.2.1	SCU	None
		Explicit VR Big Endian Transfer Syntax	1.2.840.10008.1.2.2	SCU	None
Digital Intra-oral X-Ray Image Storage - For Processing	1.2.840.10008.5.1.4.1.1.1.3.1	Implicit VR Little Endian Transfer Syntax	1.2.840.10008.1.2	SCU	None
		Explicit VR Little Endian Transfer Syntax	1.2.840.10008.1.2.1	SCU	None
		Explicit VR Big Endian Transfer Syntax	1.2.840.10008.1.2.2	SCU	None
Standalone Modality LUT Storage	1.2.840.10008.5.1.4.1.1.10	Implicit VR Little Endian Transfer Syntax	1.2.840.10008.1.2	SCU	None
		Explicit VR Little Endian Transfer Syntax	1.2.840.10008.1.2.1	SCU	None



Presentation Context Table					
		Explicit VR Big Endian Transfer Syntax	1.2.840.10008.1.2.2	SCU	None
Standalone VOI LUT Storage	1.2.840.10008.5.1.4.1.1.11	Implicit VR Little Endian Transfer Syntax	1.2.840.10008.1.2	SCU	None
		Explicit VR Little Endian Transfer Syntax	1.2.840.10008.1.2.1	SCU	None
		Explicit VR Big Endian Transfer Syntax	1.2.840.10008.1.2.2	SCU	None
Grayscale Softcopy Presentation State (GSPS) Storage SOP Class	1.2.840.10008.5.1.4.1.1.11.1	Implicit VR Little Endian Transfer Syntax	1.2.840.10008.1.2	SCU	None
		Explicit VR Little Endian Transfer Syntax	1.2.840.10008.1.2.1	SCU	None
		Explicit VR Big Endian Transfer Syntax	1.2.840.10008.1.2.2	SCU	None
X-Ray Angiographic Image Storage	1.2.840.10008.5.1.4.1.1.12.1	Implicit VR Little Endian Transfer Syntax	1.2.840.10008.1.2	SCU	None
		Explicit VR Little Endian Transfer Syntax	1.2.840.10008.1.2.1	SCU	None
		Explicit VR Big Endian Transfer Syntax	1.2.840.10008.1.2.2	SCU	None
X-Ray Radiofluoroscopic Image Storage	1.2.840.10008.5.1.4.1.1.12.	Implicit VR Little Endian Transfer Syntax	1.2.840.10008.1.2	SCU	None
		Explicit VR Little Endian Transfer Syntax	1.2.840.10008.1.2.1	SCU	None
		Explicit VR Big Endian Transfer Syntax	1.2.840.10008.1.2.2	SCU	None
X-Ray Angiographic Bi-Plane Image Storage	1.2.840.10008.5.1.4.1.1.12.	Implicit VR Little Endian Transfer Syntax	1.2.840.10008.1.2	SCU	None
		Explicit VR Little Endian Transfer Syntax	1.2.840.10008.1.2.1	SCU	None
		Explicit VR Big Endian Transfer Syntax	1.2.840.10008.1.2.2	SCU	None

Presentation Context Table					
Positron Emission Tomography Image Storage	1.2.840.10008.5.1.4.1.1.12	Implicit VR Little Endian Transfer Syntax	1.2.840.10008.1.2	SCU	None
		Explicit VR Little Endian Transfer Syntax	1.2.840.10008.1.2.1	SCU	None
		Explicit VR Big Endian Transfer Syntax	1.2.840.10008.1.2.2	SCU	None
Standalone PET Curve Storage	1.2.840.10008.5.1.4.1.1.12	Implicit VR Little Endian Transfer Syntax	1.2.840.10008.1.2	SCU	None
		Explicit VR Little Endian Transfer Syntax	1.2.840.10008.1.2.1	SCU	None
		Explicit VR Big Endian Transfer Syntax	1.2.840.10008.1.2.2	SCU	None
CT Image Storage	1.2.840.10008.5.1.4.1.1.2	Implicit VR Little Endian Transfer Syntax	1.2.840.10008.1.2	SCU	None
		Explicit VR Little Endian Transfer Syntax	1.2.840.10008.1.2.1	SCU	None
		Explicit VR Big Endian Transfer Syntax	1.2.840.10008.1.2.2	SCU	None
Nuclear Medicine Image Storage	1.2.840.10008.5.1.4.1.1.20	Implicit VR Little Endian Transfer Syntax	1.2.840.10008.1.2	SCU	None
		Explicit VR Little Endian Transfer Syntax	1.2.840.10008.1.2.1	SCU	None
		Explicit VR Big Endian Transfer Syntax	1.2.840.10008.1.2.2	SCU	None
Ultrasound Multi-Frame Image Storage (Retired)	1.2.840.10008.5.1.4.1.1.3	Implicit VR Little Endian Transfer Syntax	1.2.840.10008.1.2	SCU	None
		Explicit VR Little Endian Transfer Syntax	1.2.840.10008.1.2.1	SCU	None
		Explicit VR Big Endian Transfer Syntax	1.2.840.10008.1.2.2	SCU	None
Ultrasound Multi-Frame Image Storage	1.2.840.10008.5.1.4.1.1.3.1	Implicit VR Little Endian Transfer Syntax	1.2.840.10008.1.2	SCU	None

Presentation Context Table					
		Explicit VR Little Endian Transfer Syntax	1.2.840.10008.1.2.1	SCU	None
		Explicit VR Big Endian Transfer Syntax	1.2.840.10008.1.2.2	SCU	None
MR Image Storage	1.2.840.10008.5.1.4.1.1.4	Implicit VR Little Endian Transfer Syntax	1.2.840.10008.1.2	SCU	None
		Explicit VR Little Endian Transfer Syntax	1.2.840.10008.1.2.1	SCU	None
		Explicit VR Big Endian Transfer Syntax	1.2.840.10008.1.2.2	SCU	None
Enhance MR Image Storage	1.2.840.10008.5.1.4.1.1.4.1	Implicit VR Little Endian Transfer Syntax	1.2.840.10008.1.2	SCU	None
		Explicit VR Little Endian Transfer Syntax	1.2.840.10008.1.2.1	SCU	None
		Explicit VR Big Endian Transfer Syntax	1.2.840.10008.1.2.2	SCU	None
MR Spectroscopy Storage	1.2.840.10008.5.1.4.1.1.4.2	Implicit VR Little Endian Transfer Syntax	1.2.840.10008.1.2	SCU	None
		Explicit VR Little Endian Transfer Syntax	1.2.840.10008.1.2.1	SCU	None
		Explicit VR Big Endian Transfer Syntax	1.2.840.10008.1.2.2	SCU	None
RT Image Storage	1.2.840.10008.5.1.4.1.1.481.	Implicit VR Little Endian Transfer Syntax	1.2.840.10008.1.2	SCU	None
		Explicit VR Little Endian Transfer Syntax	1.2.840.10008.1.2.1	SCU	None
		Explicit VR Big Endian Transfer Syntax	1.2.840.10008.1.2.2	SCU	None
RT Dose Storage	1.2.840.10008.5.1.4.1.1.481.2	Implicit VR Little Endian Transfer Syntax	1.2.840.10008.1.2	SCU	None
		Explicit VR Little Endian Transfer Syntax	1.2.840.10008.1.2.1	SCU	None

Presentation Context Table					
		Explicit VR Big Endian Transfer Syntax	1.2.840.10008.1.2.2	SCU	None
RT Structure Set Storage	1.2.840.10008.5.1.4.1.1.481.3	Implicit VR Little Endian Transfer Syntax	1.2.840.10008.1.2	SCU	None
		Explicit VR Little Endian Transfer Syntax	1.2.840.10008.1.2.1	SCU	None
		Explicit VR Big Endian Transfer Syntax	1.2.840.10008.1.2.2	SCU	None
RT Beams Treatment Record Storage	1.2.840.10008.5.1.4.1.1.481.4	Implicit VR Little Endian Transfer Syntax	1.2.840.10008.1.2	SCU	None
		Explicit VR Little Endian Transfer Syntax	1.2.840.10008.1.2.1	SCU	None
		Explicit VR Big Endian Transfer Syntax	1.2.840.10008.1.2.2	SCU	None
RT Plan Storage	1.2.840.10008.5.1.4.1.1.481.5	Implicit VR Little Endian Transfer Syntax	1.2.840.10008.1.2	SCU	None
		Explicit VR Little Endian Transfer Syntax	1.2.840.10008.1.2.1	SCU	None
		Explicit VR Big Endian Transfer Syntax	1.2.840.10008.1.2.2	SCU	None
RT Brachy Treatment Record Storage	1.2.840.10008.5.1.4.1.1.481.6	Implicit VR Little Endian Transfer Syntax	1.2.840.10008.1.2	SCU	None
		Explicit VR Little Endian Transfer Syntax	1.2.840.10008.1.2.1	SCU	None
		Explicit VR Big Endian Transfer Syntax	1.2.840.10008.1.2.2	SCU	None
RT Treatment Summary Record Storage	1.2.840.10008.5.1.4.1.1.481.7	Implicit VR Little Endian Transfer Syntax	1.2.840.10008.1.2	SCU	None
		Explicit VR Little Endian Transfer Syntax	1.2.840.10008.1.2.1	SCU	None
		Explicit VR Big Endian Transfer Syntax	1.2.840.10008.1.2.2	SCU	None

Presentation Context Table					
Nuclear Medicine Image Storage (Retired)	1.2.840.10008.5.1.4.1.1.5	Implicit VR Little Endian Transfer Syntax	1.2.840.10008.1.2	SCU	None
		Explicit VR Little Endian Transfer Syntax	1.2.840.10008.1.2.1	SCU	None
		Explicit VR Big Endian Transfer Syntax	1.2.840.10008.1.2.2	SCU	None
Ultrasound Image Storage (Retired)	1.2.840.10008.5.1.4.1.1.6	Implicit VR Little Endian Transfer Syntax	1.2.840.10008.1.2	SCU	None
		Explicit VR Little Endian Transfer Syntax	1.2.840.10008.1.2.1	SCU	None
		Explicit VR Big Endian Transfer Syntax	1.2.840.10008.1.2.2	SCU	None
Ultrasound Image Storage	1.2.840.10008.5.1.4.1.1.6.1	Implicit VR Little Endian Transfer Syntax	1.2.840.10008.1.2	SCU	None
		Explicit VR Little Endian Transfer Syntax	1.2.840.10008.1.2.1	SCU	None
		Explicit VR Big Endian Transfer Syntax	1.2.840.10008.1.2.2	SCU	None
Raw Data Storage	1.2.840.10008.5.1.4.1.1.66	Implicit VR Little Endian Transfer Syntax	1.2.840.10008.1.2	SCU	None
		Explicit VR Little Endian Transfer Syntax	1.2.840.10008.1.2.1	SCU	None
		Explicit VR Big Endian Transfer Syntax	1.2.840.10008.1.2.2	SCU	None
Secondary Capture Image Storage	1.2.840.10008.5.1.4.1.1.7	Implicit VR Little Endian Transfer Syntax	1.2.840.10008.1.2	SCU	None
		Explicit VR Little Endian Transfer Syntax	1.2.840.10008.1.2.1	SCU	None
		Explicit VR Big Endian Transfer Syntax	1.2.840.10008.1.2.2	SCU	None
Multi-frame Single Bit Secondary Capture Image	1.2.840.10008.5.1.4.1.1.7.1	Implicit VR Little Endian Transfer Syntax	1.2.840.10008.1.2	SCU	None

Presentation Context Table					
Storage		Explicit VR Little Endian Transfer Syntax	1.2.840.10008.1.2.1	SCU	None
		Explicit VR Big Endian Transfer Syntax	1.2.840.10008.1.2.2	SCU	None
Multi-frame True Color Secondary Capture Image Storage	1.2.840.10008.5.1.4.1.1.7.4	Implicit VR Little Endian Transfer Syntax	1.2.840.10008.1.2	SCU	None
		Explicit VR Little Endian Transfer Syntax	1.2.840.10008.1.2.1	SCU	None
		Explicit VR Big Endian Transfer Syntax	1.2.840.10008.1.2.2	SCU	None
VL Endoscopic Image Storage	1.2.840.10008.5.1.4.1.1.77.1.1	Implicit VR Little Endian Transfer Syntax	1.2.840.10008.1.2	SCU	None
		Explicit VR Little Endian Transfer Syntax	1.2.840.10008.1.2.1	SCU	None
		Explicit VR Big Endian Transfer Syntax	1.2.840.10008.1.2.2	SCU	None
VL Microscopic Image Storage	1.2.840.10008.5.1.4.1.1.77.1.2	Implicit VR Little Endian Transfer Syntax	1.2.840.10008.1.2	SCU	None
		Explicit VR Little Endian Transfer Syntax	1.2.840.10008.1.2.1	SCU	None
		Explicit VR Big Endian Transfer Syntax	1.2.840.10008.1.2.2	SCU	None
VL Slide-Coordinates Microscopic Image Storage	1.2.840.10008.5.1.4.1.1.77.1.3	Implicit VR Little Endian Transfer Syntax	1.2.840.10008.1.2	SCU	None
		Explicit VR Little Endian Transfer Syntax	1.2.840.10008.1.2.1	SCU	None
		Explicit VR Big Endian Transfer Syntax	1.2.840.10008.1.2.2	SCU	None
VL Photographic Image Storage	1.2.840.10008.5.1.4.1.1.77.1.4	Implicit VR Little Endian Transfer Syntax	1.2.840.10008.1.2	SCU	None
		Explicit VR Little Endian Transfer Syntax	1.2.840.10008.1.2.1	SCU	None

Presentation Context Table					
		Explicit VR Big Endian Transfer Syntax	1.2.840.10008.1.2.2	SCU	None
Standalone Overlay Storage	1.2.840.10008.5.1.4.1.1.8	Implicit VR Little Endian Transfer Syntax	1.2.840.10008.1.2	SCU	None
		Explicit VR Little Endian Transfer Syntax	1.2.840.10008.1.2.1	SCU	None
		Explicit VR Big Endian Transfer Syntax	1.2.840.10008.1.2.2	SCU	None
Basic Text Structured Reporting SOP Class	1.2.840.10008.5.1.4.1.1.88.11	Implicit VR Little Endian Transfer Syntax	1.2.840.10008.1.2	SCU	None
		Explicit VR Little Endian Transfer Syntax	1.2.840.10008.1.2.1	SCU	None
		Explicit VR Big Endian Transfer Syntax	1.2.840.10008.1.2.2	SCU	None
Enhanced Structured Reporting SOP Class	1.2.840.10008.5.1.4.1.1.88.22	Implicit VR Little Endian Transfer Syntax	1.2.840.10008.1.2	SCU	None
		Explicit VR Little Endian Transfer Syntax	1.2.840.10008.1.2.1	SCU	None
		Explicit VR Big Endian Transfer Syntax	1.2.840.10008.1.2.2	SCU	None
Comprehensive Structured Reporting SOP Class	1.2.840.10008.5.1.4.1.1.88.33	Implicit VR Little Endian Transfer Syntax	1.2.840.10008.1.2	SCU	None
		Explicit VR Little Endian Transfer Syntax	1.2.840.10008.1.2.1	SCU	None
		Explicit VR Big Endian Transfer Syntax	1.2.840.10008.1.2.2	SCU	None
Mammography CAD SR SOP Class	1.2.840.10008.5.1.4.1.1.88.50	Implicit VR Little Endian Transfer Syntax	1.2.840.10008.1.2	SCU	None
		Explicit VR Little Endian Transfer Syntax	1.2.840.10008.1.2.1	SCU	None
		Explicit VR Big Endian Transfer Syntax	1.2.840.10008.1.2.2	SCU	None

Presentation Context Table					
Key Object Selection Document	1.2.840.10008.5.1.4.1.1.88.59	Implicit VR Little Endian Transfer Syntax	1.2.840.10008.1.2	SCU	None
		Explicit VR Little Endian Transfer Syntax	1.2.840.10008.1.2.1	SCU	None
		Explicit VR Big Endian Transfer Syntax	1.2.840.10008.1.2.2	SCU	None
Chest CAD SR Storage	1.2.840.10008.5.1.4.1.1.88.65	Implicit VR Little Endian Transfer Syntax	1.2.840.10008.1.2	SCU	None
		Explicit VR Little Endian Transfer Syntax	1.2.840.10008.1.2.1	SCU	None
		Explicit VR Big Endian Transfer Syntax	1.2.840.10008.1.2.2	SCU	None
Standalone Curve Storage	1.2.840.10008.5.1.4.1.1.9	Implicit VR Little Endian Transfer Syntax	1.2.840.10008.1.2	SCU	None
		Explicit VR Little Endian Transfer Syntax	1.2.840.10008.1.2.1	SCU	None
		Explicit VR Big Endian Transfer Syntax	1.2.840.10008.1.2.2	SCU	None
12-lead ECG Waveform Storage	1.2.840.10008.5.1.4.1.1.9.1.1	Implicit VR Little Endian Transfer Syntax	1.2.840.10008.1.2	SCU	None
		Explicit VR Little Endian Transfer Syntax	1.2.840.10008.1.2.1	SCU	None
		Explicit VR Big Endian Transfer Syntax	1.2.840.10008.1.2.2	SCU	None
General ECG Waveform Storage	1.2.840.10008.5.1.4.1.1.9.1.2	Implicit VR Little Endian Transfer Syntax	1.2.840.10008.1.2	SCU	None
		Explicit VR Little Endian Transfer Syntax	1.2.840.10008.1.2.1	SCU	None
		Explicit VR Big Endian Transfer Syntax	1.2.840.10008.1.2.2	SCU	None
Ambulatory ECG Waveform Storage	1.2.840.10008.5.1.4.1.1.9.1.3	Implicit VR Little Endian Transfer Syntax	1.2.840.10008.1.2	SCU	None



Presentation Context Table					
		Explicit VR Little Endian Transfer Syntax	1.2.840.10008.1.2.1	SCU	None
		Explicit VR Big Endian Transfer Syntax	1.2.840.10008.1.2.2	SCU	None
Hemodynamic Waveform Storage	1.2.840.10008.5.1.4.1.1.9.2.1	Implicit VR Little Endian Transfer Syntax	1.2.840.10008.1.2	SCU	None
		Explicit VR Little Endian Transfer Syntax	1.2.840.10008.1.2.1	SCU	None
		Explicit VR Big Endian Transfer Syntax	1.2.840.10008.1.2.2	SCU	None
Cardiac Electrophysiology Waveform Storage	1.2.840.10008.5.1.4.1.1.9.3.1	Implicit VR Little Endian Transfer Syntax	1.2.840.10008.1.2	SCU	None
		Explicit VR Little Endian Transfer Syntax	1.2.840.10008.1.2.1	SCU	None
		Explicit VR Big Endian Transfer Syntax	1.2.840.10008.1.2.2	SCU	None
Basic Voice Audio Waveform Storage	1.2.840.10008.5.1.4.1.1.9.4.1	Implicit VR Little Endian Transfer Syntax	1.2.840.10008.1.2	SCU	None
		Explicit VR Little Endian Transfer Syntax	1.2.840.10008.1.2.1	SCU	None
		Explicit VR Big Endian Transfer Syntax	1.2.840.10008.1.2.2	SCU	None
GE Nuclear Medicine private SOP Class	1.2.840113619.4.27	Implicit VR Little Endian Transfer Syntax	1.2.840.10008.1.2	SCU	None
		Explicit VR Little Endian Transfer Syntax	1.2.840.10008.1.2.1	SCU	None
		Explicit VR Big Endian Transfer Syntax	1.2.840.10008.1.2.2	SCU	None
Philips Private Gyroscan MR Spectrum	1.3.46.670589.11.0.0.12.1	Implicit VR Little Endian Transfer Syntax	1.2.840.10008.1.2	SCU	None
		Explicit VR Little Endian Transfer Syntax	1.2.840.10008.1.2.1	SCU	None

Presentation Context Table					
		Explicit VR Big Endian Transfer Syntax	1.2.840.10008.1.2.2	SCU	None
Philips Private Gyroscan MR Series Data	1.3.46.670589.11.0.0.12.2	Implicit VR Little Endian Transfer Syntax	1.2.840.10008.1.2	SCU	None
		Explicit VR Little Endian Transfer Syntax	1.2.840.10008.1.2.1	SCU	None
		Explicit VR Big Endian Transfer Syntax	1.2.840.10008.1.2.2	SCU	None
Philips Private Specialized XA Image	1.3.46.670589.2.3.1.1	Implicit VR Little Endian Transfer Syntax	1.2.840.10008.1.2	SCU	None
		Explicit VR Little Endian Transfer Syntax	1.2.840.10008.1.2.1	SCU	None
		Explicit VR Big Endian Transfer Syntax	1.2.840.10008.1.2.2	SCU	None
Philips Private CX Image Storage	1.3.46.670589.2.4.1.1	Implicit VR Little Endian Transfer Syntax	1.2.840.10008.1.2	SCU	None
		Explicit VR Little Endian Transfer Syntax	1.2.840.10008.1.2.1	SCU	None
		Explicit VR Big Endian Transfer Syntax	1.2.840.10008.1.2.2	SCU	None
Philips Private iE33 3D Object Storage	1.3.46.670589.2.5.1.1	Implicit VR Little Endian Transfer Syntax	1.2.840.10008.1.2	SCU	None
		Explicit VR Little Endian Transfer Syntax	1.2.840.10008.1.2.1	SCU	None
		Explicit VR Big Endian Transfer Syntax	1.2.840.10008.1.2.2	SCU	None
Philips Private Volume Storage	1.3.46.670589.5.0.1	Implicit VR Little Endian Transfer Syntax	1.2.840.10008.1.2	SCU	None
		Explicit VR Little Endian Transfer Syntax	1.2.840.10008.1.2.1	SCU	None
		Explicit VR Big Endian Transfer Syntax	1.2.840.10008.1.2.2	SCU	None

Presentation Context Table					
Philips Private Volume Image Reference	1.3.46.670589.5.0.1.1	Implicit VR Little Endian Transfer Syntax	1.2.840.10008.1.2	SCU	None
		Explicit VR Little Endian Transfer Syntax	1.2.840.10008.1.2.1	SCU	None
		Explicit VR Big Endian Transfer Syntax	1.2.840.10008.1.2.2	SCU	None
Philips Private 3D Object Storage	1.3.46.670589.5.0.2	Implicit VR Little Endian Transfer Syntax	1.2.840.10008.1.2	SCU	None
		Explicit VR Little Endian Transfer Syntax	1.2.840.10008.1.2.1	SCU	None
		Explicit VR Big Endian Transfer Syntax	1.2.840.10008.1.2.2	SCU	None
Philips Private 3D Object 2 Storage	1.3.46.670589.5.0.2.1	Implicit VR Little Endian Transfer Syntax	1.2.840.10008.1.2	SCU	None
		Explicit VR Little Endian Transfer Syntax	1.2.840.10008.1.2.1	SCU	None
		Explicit VR Big Endian Transfer Syntax	1.2.840.10008.1.2.2	SCU	None
Philips Private Surface Storage	1.3.46.670589.5.0.3	Implicit VR Little Endian Transfer Syntax	1.2.840.10008.1.2	SCU	None
		Explicit VR Little Endian Transfer Syntax	1.2.840.10008.1.2.1	SCU	None
		Explicit VR Big Endian Transfer Syntax	1.2.840.10008.1.2.2	SCU	None
Philips Private Surface 2 Storage	1.3.46.670589.5.0.3.1	Implicit VR Little Endian Transfer Syntax	1.2.840.10008.1.2	SCU	None
		Explicit VR Little Endian Transfer Syntax	1.2.840.10008.1.2.1	SCU	None
		Explicit VR Big Endian Transfer Syntax	1.2.840.10008.1.2.2	SCU	None
Philips Private Composite Object Storage	1.3.46.670589.5.0.4	Implicit VR Little Endian Transfer Syntax	1.2.840.10008.1.2	SCU	None

Presentation Context Table					
		Explicit VR Little Endian Transfer Syntax	1.2.840.10008.1.2.1	SCU	None
		Explicit VR Big Endian Transfer Syntax	1.2.840.10008.1.2.2	SCU	None
Philips Private MR Cardio Profile	1.3.46.670589.5.0.7	Implicit VR Little Endian Transfer Syntax	1.2.840.10008.1.2	SCU	None
		Explicit VR Little Endian Transfer Syntax	1.2.840.10008.1.2.1	SCU	None
		Explicit VR Big Endian Transfer Syntax	1.2.840.10008.1.2.2	SCU	None
Philips Private MR Cardio	1.3.46.670589.5.0.8	Implicit VR Little Endian Transfer Syntax	1.2.840.10008.1.2	SCU	None
		Explicit VR Little Endian Transfer Syntax	1.2.840.10008.1.2.1	SCU	None
		Explicit VR Big Endian Transfer Syntax	1.2.840.10008.1.2.2	SCU	None
Philips Private CT Synthetic Image Storage	1.3.46.670589.5.0.9	Implicit VR Little Endian Transfer Syntax	1.2.840.10008.1.2	SCU	None
		Explicit VR Little Endian Transfer Syntax	1.2.840.10008.1.2.1	SCU	None
		Explicit VR Big Endian Transfer Syntax	1.2.840.10008.1.2.2	SCU	None
Philips Private MR Synthetic Image Storage	1.3.46.670589.5.0.10	Implicit VR Little Endian Transfer Syntax	1.2.840.10008.1.2	SCU	None
		Explicit VR Little Endian Transfer Syntax	1.2.840.10008.1.2.1	SCU	None
		Explicit VR Big Endian Transfer Syntax	1.2.840.10008.1.2.2	SCU	None
Philips Private MR Cardio Analysis Storage	1.3.46.670589.5.0.11	Implicit VR Little Endian Transfer Syntax	1.2.840.10008.1.2	SCU	None
		Explicit VR Little Endian Transfer Syntax	1.2.840.10008.1.2.1	SCU	None

Presentation Context Table					
		Explicit VR Big Endian Transfer Syntax	1.2.840.10008.1.2.2	SCU	None
Philips Private MR Cardio Analysis Data	1.3.46.670589.5.0.11.1	Implicit VR Little Endian Transfer Syntax	1.2.840.10008.1.2	SCU	None
		Explicit VR Little Endian Transfer Syntax	1.2.840.10008.1.2.1	SCU	None
		Explicit VR Big Endian Transfer Syntax	1.2.840.10008.1.2.2	SCU	None
Philips Private CX Synthetic Image Storage	1.3.46.670589.5.0.12	Implicit VR Little Endian Transfer Syntax	1.2.840.10008.1.2	SCU	None
		Explicit VR Little Endian Transfer Syntax	1.2.840.10008.1.2.1	SCU	None
		Explicit VR Big Endian Transfer Syntax	1.2.840.10008.1.2.2	SCU	None
Philips Private Perfusion Image Reference	1.3.46.670589.5.0.13	Implicit VR Little Endian Transfer Syntax	1.2.840.10008.1.2	SCU	None
		Explicit VR Little Endian Transfer Syntax	1.2.840.10008.1.2.1	SCU	None
		Explicit VR Big Endian Transfer Syntax	1.2.840.10008.1.2.2	SCU	None
Philips Private Perfusion Analysis Data	1.3.46.670589.5.0.14	Implicit VR Little Endian Transfer Syntax	1.2.840.10008.1.2	SCU	None
		Explicit VR Little Endian Transfer Syntax	1.2.840.10008.1.2.1	SCU	None
		Explicit VR Big Endian Transfer Syntax	1.2.840.10008.1.2.2	SCU	None

**4.1.3 Association Acceptance Policy**

**4.1.3.1 Real World Activity – Remote System Requests Normal Priority Image Storage**

**4.1.3.1.1 Associated Real-World Activity**

The iSite DICOM Server will accept DICOM Storage Service association request that are initiated by remote DICOM entities. The iSite DICOM Server will process the stored DICOM images and make them available for access by iSite client applications.

**4.1.3.1.2 Accepted Presentation Contexts**

**Table 8: Accepted Presentation Contexts for iSite DICOM Server and Real-World Activity – Remote System Request Normal Priority Image Storage**

Presentation Context Table					
Abstract Syntax		Transfer Syntax		Role	Extended Negotiation
Name	UID	Name List	UID List		
Stored Print Storage	1.2.840.10008.5.1.1.27	Implicit VR Little Endian Transfer Syntax	1.2.840.10008.1.2	SCP	None
		Explicit VR Little Endian Transfer Syntax	1.2.840.10008.1.2.1	SCP	None
		Explicit VR Big Endian Transfer Syntax	1.2.840.10008.1.2.2	SCP	None
		RLE Transfer Syntax	1.2.840.10008.1.2.5	SCP	None
		JPEG Baseline Coding Process 1 Transfer Syntax	1.2.840.10008.1.2.4.50	SCP	None
		JPEG Extended (Process 2 & 4)	1.2.840.10008.1.2.4.51	SCP	None
		JPEG Lossless, Non-Hierarchical (Process 14)	1.2.840.10008.1.2.4.57	SCP	None
		JPEG Lossless, Non-Hierarchical, (Process 14 [Selection Value 1]):	1.2.840.10008.1.2.4.70	SCP	None

Presentation Context Table					
		JPEG 2000 Image Compression (Lossless Only)	1.2.840.10008.1.2.4.90	SCP	None
		JPEG 2000 Image Compression	1.2.840.10008.1.2.4.91	SCP	None
Hardcopy Grayscale Image Storage	1.2.840.10008.5.1.1.29	Implicit VR Little Endian Transfer Syntax	1.2.840.10008.1.2	SCP	None
		Explicit VR Little Endian Transfer Syntax	1.2.840.10008.1.2.1	SCP	None
		Explicit VR Big Endian Transfer Syntax	1.2.840.10008.1.2.2	SCP	None
		RLE Transfer Syntax	1.2.840.10008.1.2.5	SCP	None
		JPEG Baseline Coding Process 1 Transfer Syntax	1.2.840.10008.1.2.4.50	SCP	None
		JPEG Extended (Process 2 & 4)	1.2.840.10008.1.2.4.51	SCP	None
		JPEG Lossless, Non-Hierarchical (Process 14)	1.2.840.10008.1.2.4.57	SCP	None
		JPEG Lossless, Non-Hierarchical, (Process 14 [Selection Value 1]):	1.2.840.10008.1.2.4.70	SCP	None
		JPEG 2000 Image Compression (Lossless Only)	1.2.840.10008.1.2.4.90	SCP	None
		JPEG 2000 Image Compression	1.2.840.10008.1.2.4.91	SCP	None
Hardcopy Color Image Storage	1.2.840.10008.5.1.1.30	Implicit VR Little Endian Transfer Syntax	1.2.840.10008.1.2	SCP	None
		Explicit VR Little Endian Transfer Syntax	1.2.840.10008.1.2.1	SCP	None

Presentation Context Table					
		Explicit VR Big Endian Transfer Syntax	1.2.840.10008.1.2.2	SCP	None
		RLE Transfer Syntax	1.2.840.10008.1.2.5	SCP	None
		JPEG Baseline Coding Process 1 Transfer Syntax	1.2.840.10008.1.2.4.50	SCP	None
		JPEG Extended (Process 2 & 4)	1.2.840.10008.1.2.4.51	SCP	None
		JPEG Lossless, Non-Hierarchical (Process 14)	1.2.840.10008.1.2.4.57	SCP	None
		JPEG Lossless, Non-Hierarchical, (Process 14 [Selection Value 1]):	1.2.840.10008.1.2.4.70	SCP	None
		JPEG 2000 Image Compression (Lossless Only)	1.2.840.10008.1.2.4.90	SCP	None
		JPEG 2000 Image Compression	1.2.840.10008.1.2.4.91	SCP	None
Computed Radiography Image Storage	1.2.840.10008.5.1.4.1.1.1	Implicit VR Little Endian Transfer Syntax	1.2.840.10008.1.2	SCP	None
		Explicit VR Little Endian Transfer Syntax	1.2.840.10008.1.2.1	SCP	None
		Explicit VR Big Endian Transfer Syntax	1.2.840.10008.1.2.2	SCP	None
		RLE Transfer Syntax	1.2.840.10008.1.2.5	SCP	None
		JPEG Baseline Coding Process 1 Transfer Syntax	1.2.840.10008.1.2.4.50	SCP	None
		JPEG Extended (Process 2 & 4)	1.2.840.10008.1.2.4.51	SCP	None
		JPEG Lossless, Non-Hierarchical (Process 14)	1.2.840.10008.1.2.4.57	SCP	None



Presentation Context Table					
		JPEG Lossless, Non-Hierarchical, (Process 14 [Selection Value 1]):	1.2.840.10008.1.2.4.70	SCP	None
		JPEG 2000 Image Compression (Lossless Only)	1.2.840.10008.1.2.4.90	SCP	None
		JPEG 2000 Image Compression	1.2.840.10008.1.2.4.91	SCP	None
Digital X-Ray Image Storage - For Presentation	1.2.840.10008.5.1.4.1.1.1.1	Implicit VR Little Endian Transfer Syntax	1.2.840.10008.1.2	SCP	None
		Explicit VR Little Endian Transfer Syntax	1.2.840.10008.1.2.1	SCP	None
		Explicit VR Big Endian Transfer Syntax	1.2.840.10008.1.2.2	SCP	None
		RLE Transfer Syntax	1.2.840.10008.1.2.5	SCP	None
		JPEG Baseline Coding Process 1 Transfer Syntax	1.2.840.10008.1.2.4.50	SCP	None
		JPEG Extended (Process 2 & 4)	1.2.840.10008.1.2.4.51	SCP	None
		JPEG Lossless, Non-Hierarchical (Process 14)	1.2.840.10008.1.2.4.57	SCP	None
		JPEG Lossless, Non-Hierarchical, (Process 14 [Selection Value 1]):	1.2.840.10008.1.2.4.70	SCP	None
		JPEG 2000 Image Compression (Lossless Only)	1.2.840.10008.1.2.4.90	SCP	None
		JPEG 2000 Image Compression	1.2.840.10008.1.2.4.91	SCP	None
Digital X-Ray Image Storage - For Processing	1.2.840.10008.5.1.4.1.1.1.1	Implicit VR Little Endian Transfer Syntax	1.2.840.10008.1.2	SCP	None

Presentation Context Table					
		Explicit VR Little Endian Transfer Syntax	1.2.840.10008.1.2.1	SCP	None
		Explicit VR Big Endian Transfer Syntax	1.2.840.10008.1.2.2	SCP	None
		RLE Transfer Syntax	1.2.840.10008.1.2.5	SCP	None
		JPEG Baseline Coding Process 1 Transfer Syntax	1.2.840.10008.1.2.4.50	SCP	None
		JPEG Extended (Process 2 & 4)	1.2.840.10008.1.2.4.51	SCP	None
		JPEG Lossless, Non-Hierarchical (Process 14)	1.2.840.10008.1.2.4.57	SCP	None
		JPEG Lossless, Non-Hierarchical, (Process 14 [Selection Value 1]):	1.2.840.10008.1.2.4.70	SCP	None
		JPEG 2000 Image Compression (Lossless Only)	1.2.840.10008.1.2.4.90	SCP	None
		JPEG Extended (Process 2 & 4)	1.2.840.10008.1.2.4.51	SCP	None
		JPEG 2000 Image Compression	1.2.840.10008.1.2.4.91	SCP	None
Digital Mammography Image Storage - For Presentation	1.2.840.10008.5.1.4.1.1.1.2	Implicit VR Little Endian Transfer Syntax	1.2.840.10008.1.2	SCP	None
		Explicit VR Little Endian Transfer Syntax	1.2.840.10008.1.2.1	SCP	None
		Explicit VR Big Endian Transfer Syntax	1.2.840.10008.1.2.2	SCP	None
		RLE Transfer Syntax	1.2.840.10008.1.2.5	SCP	None
		JPEG Baseline Coding Process 1 Transfer Syntax	1.2.840.10008.1.2.4.50	SCP	None
		JPEG Extended (Process 2 & 4)	1.2.840.10008.1.2.4.51	SCP	None

Presentation Context Table					
		JPEG Lossless, Non-Hierarchical (Process 14)	1.2.840.10008.1.2.4.57	SCP	None
		JPEG Lossless, Non-Hierarchical, (Process 14 [Selection Value 1]):	1.2.840.10008.1.2.4.70	SCP	None
		JPEG 2000 Image Compression (Lossless Only)	1.2.840.10008.1.2.4.90	SCP	None
		JPEG 2000 Image Compression	1.2.840.10008.1.2.4.91	SCP	None
Digital Mammography Image Storage - For Processing	1.2.840.10008.5.1.4.1.1.1.2.1	Implicit VR Little Endian Transfer Syntax	1.2.840.10008.1.2	SCP	None
		Explicit VR Little Endian Transfer Syntax	1.2.840.10008.1.2.1	SCP	None
		Explicit VR Big Endian Transfer Syntax	1.2.840.10008.1.2.2	SCP	None
		RLE Transfer Syntax	1.2.840.10008.1.2.5	SCP	None
		JPEG Baseline Coding Process 1 Transfer Syntax	1.2.840.10008.1.2.4.50	SCP	None
		JPEG Extended (Process 2 & 4)	1.2.840.10008.1.2.4.51	SCP	None
		JPEG Lossless, Non-Hierarchical (Process 14)	1.2.840.10008.1.2.4.57	SCP	None
		JPEG Lossless, Non-Hierarchical, (Process 14 [Selection Value 1]):	1.2.840.10008.1.2.4.70	SCP	None
		JPEG 2000 Image Compression (Lossless Only)	1.2.840.10008.1.2.4.90	SCP	None

Presentation Context Table					
		JPEG 2000 Image Compression	1.2.840.10008.1.2.4.91	SCP	None
Digital Intra-oral X-Ray Image Storage - For Presentation	1.2.840.10008.5.1.4.1.1.1.3	Implicit VR Little Endian Transfer Syntax	1.2.840.10008.1.2	SCP	None
		Explicit VR Little Endian Transfer Syntax	1.2.840.10008.1.2.1	SCP	None
		Explicit VR Big Endian Transfer Syntax	1.2.840.10008.1.2.2	SCP	None
		RLE Transfer Syntax	1.2.840.10008.1.2.5	SCP	None
		JPEG Baseline Coding Process 1 Transfer Syntax	1.2.840.10008.1.2.4.50	SCP	None
		JPEG Extended (Process 2 & 4)	1.2.840.10008.1.2.4.51	SCP	None
		JPEG Lossless, Non-Hierarchical (Process 14)	1.2.840.10008.1.2.4.57	SCP	None
		JPEG Lossless, Non-Hierarchical, (Process 14 [Selection Value 1]):	1.2.840.10008.1.2.4.70	SCP	None
		JPEG 2000 Image Compression (Lossless Only)	1.2.840.10008.1.2.4.90	SCP	None
		JPEG 2000 Image Compression	1.2.840.10008.1.2.4.91	SCP	None
Digital Intra-oral X-Ray Image Storage - For Processing	1.2.840.10008.5.1.4.1.1.1.3.1	Implicit VR Little Endian Transfer Syntax	1.2.840.10008.1.2	SCP	None
		Explicit VR Little Endian Transfer Syntax	1.2.840.10008.1.2.1	SCP	None
		Explicit VR Big Endian Transfer Syntax	1.2.840.10008.1.2.2	SCP	None
		RLE Transfer Syntax	1.2.840.10008.1.2.5	SCP	None

Presentation Context Table					
		JPEG Baseline Coding Process 1 Transfer Syntax	1.2.840.10008.1.2.4.50	SCP	None
		JPEG Extended (Process 2 & 4)	1.2.840.10008.1.2.4.51	SCP	None
		JPEG Lossless, Non-Hierarchical (Process 14)	1.2.840.10008.1.2.4.57	SCP	None
		JPEG 2000 Image Compression (Lossless Only)	1.2.840.10008.1.2.4.90	SCP	None
		JPEG 2000 Image Compression	1.2.840.10008.1.2.4.91	SCP	None
Standalone Modality LUT Storage	1.2.840.10008.5.1.4.1.1.10	Implicit VR Little Endian Transfer Syntax	1.2.840.10008.1.2	SCP	None
		Explicit VR Little Endian Transfer Syntax	1.2.840.10008.1.2.1	SCP	None
		Explicit VR Big Endian Transfer Syntax	1.2.840.10008.1.2.2	SCP	None
		RLE Transfer Syntax	1.2.840.10008.1.2.5	SCP	None
		JPEG Baseline Coding Process 1 Transfer Syntax	1.2.840.10008.1.2.4.50	SCP	None
		JPEG Extended (Process 2 & 4)	1.2.840.10008.1.2.4.51	SCP	None
		JPEG Lossless, Non-Hierarchical (Process 14)	1.2.840.10008.1.2.4.57	SCP	None
		JPEG Lossless, Non-Hierarchical, (Process 14 [Selection Value 1]):	1.2.840.10008.1.2.4.70	SCP	None
		JPEG 2000 Image Compression (Lossless Only)	1.2.840.10008.1.2.4.90	SCP	None

Presentation Context Table					
		JPEG 2000 Image Compression	1.2.840.10008.1.2.4.91	SCP	None
Standalone VOI LUT Storage	1.2.840.10008.5.1.4.1.1.11	Implicit VR Little Endian Transfer Syntax	1.2.840.10008.1.2	SCP	None
		Explicit VR Little Endian Transfer Syntax	1.2.840.10008.1.2.1	SCP	None
		Explicit VR Big Endian Transfer Syntax	1.2.840.10008.1.2.2	SCP	None
		RLE Transfer Syntax	1.2.840.10008.1.2.5	SCP	None
		JPEG Baseline Coding Process 1 Transfer Syntax	1.2.840.10008.1.2.4.50	SCP	None
		JPEG Extended (Process 2 & 4)	1.2.840.10008.1.2.4.51	SCP	None
		JPEG Lossless, Non-Hierarchical (Process 14)	1.2.840.10008.1.2.4.57	SCP	None
		JPEG Lossless, Non-Hierarchical, (Process 14 [Selection Value 1]):	1.2.840.10008.1.2.4.70	SCP	None
		JPEG 2000 Image Compression (Lossless Only)	1.2.840.10008.1.2.4.90	SCP	None
		JPEG 2000 Image Compression	1.2.840.10008.1.2.4.91	SCP	None
Grayscale Softcopy Presentation State (GSPS) Storage SOP Class	1.2.840.10008.5.1.4.1.1.11.1	Implicit VR Little Endian Transfer Syntax	1.2.840.10008.1.2	SCP	None
		Explicit VR Little Endian Transfer Syntax	1.2.840.10008.1.2.1	SCP	None
		Explicit VR Big Endian Transfer Syntax	1.2.840.10008.1.2.2	SCP	None
		RLE Transfer Syntax	1.2.840.10008.1.2.5	SCP	None

Presentation Context Table					
		JPEG Baseline Coding Process 1 Transfer Syntax	1.2.840.10008.1.2.4.50	SCP	None
		JPEG Extended (Process 2 & 4)	1.2.840.10008.1.2.4.51	SCP	None
		JPEG Lossless, Non-Hierarchical (Process 14)	1.2.840.10008.1.2.4.57	SCP	None
		JPEG Lossless, Non-Hierarchical, (Process 14 [Selection Value 1]):	1.2.840.10008.1.2.4.70	SCP	None
		JPEG 2000 Image Compression (Lossless Only)	1.2.840.10008.1.2.4.90	SCP	None
		JPEG 2000 Image Compression	1.2.840.10008.1.2.4.91	SCP	None
X-Ray Angiographic Image Storage	1.2.840.10008.5.1.4.1.1.12.1	Implicit VR Little Endian Transfer Syntax	1.2.840.10008.1.2	SCP	None
		Explicit VR Little Endian Transfer Syntax	1.2.840.10008.1.2.1	SCP	None
		Explicit VR Big Endian Transfer Syntax	1.2.840.10008.1.2.2	SCP	None
		RLE Transfer Syntax	1.2.840.10008.1.2.5	SCP	None
		JPEG Baseline Coding Process 1 Transfer Syntax	1.2.840.10008.1.2.4.50	SCP	None
		JPEG Extended (Process 2 & 4)	1.2.840.10008.1.2.4.51	SCP	None
		JPEG Lossless, Non-Hierarchical (Process 14)	1.2.840.10008.1.2.4.57	SCP	None
		JPEG Lossless, Non-Hierarchical, (Process 14 [Selection Value 1]):	1.2.840.10008.1.2.4.70	SCP	None

Presentation Context Table					
		JPEG 2000 Image Compression (Lossless Only)	1.2.840.10008.1.2.4.90	SCP	None
		JPEG 2000 Image Compression	1.2.840.10008.1.2.4.91	SCP	None
X-Ray Radiofluoroscopic Image Storage	1.2.840.10008.5.1.4.1.1.12.2	Implicit VR Little Endian Transfer Syntax	1.2.840.10008.1.2	SCP	None
		Explicit VR Little Endian Transfer Syntax	1.2.840.10008.1.2.1	SCP	None
		Explicit VR Big Endian Transfer Syntax	1.2.840.10008.1.2.2	SCP	None
		RLE Transfer Syntax	1.2.840.10008.1.2.5	SCP	None
		JPEG Baseline Coding Process 1 Transfer Syntax	1.2.840.10008.1.2.4.50	SCP	None
		JPEG Extended (Process 2 & 4)	1.2.840.10008.1.2.4.51	SCP	None
		JPEG Lossless, Non-Hierarchical (Process 14)	1.2.840.10008.1.2.4.57	SCP	None
		JPEG Lossless, Non-Hierarchical, (Process 14 [Selection Value 1]):	1.2.840.10008.1.2.4.70	SCP	None
		JPEG 2000 Image Compression (Lossless Only)	1.2.840.10008.1.2.4.90	SCP	None
		JPEG 2000 Image Compression	1.2.840.10008.1.2.4.91	SCP	None
X-Ray Angiographic Bi-Plane Image Storage	1.2.840.10008.5.1.4.1.1.12.3	Implicit VR Little Endian Transfer Syntax	1.2.840.10008.1.2	SCP	None
		Explicit VR Little Endian Transfer Syntax	1.2.840.10008.1.2.1	SCP	None



Presentation Context Table					
		Explicit VR Big Endian Transfer Syntax	1.2.840.10008.1.2.2	SCP	None
		RLE Transfer Syntax	1.2.840.10008.1.2.5	SCP	None
		JPEG Baseline Coding Process 1 Transfer Syntax	1.2.840.10008.1.2.4.50	SCP	None
		JPEG Extended (Process 2 & 4)	1.2.840.10008.1.2.4.51	SCP	None
		JPEG Lossless, Non-Hierarchical (Process 14)	1.2.840.10008.1.2.4.57	SCP	None
		JPEG Lossless, Non-Hierarchical, (Process 14 [Selection Value 1]):	1.2.840.10008.1.2.4.70	SCP	None
		JPEG 2000 Image Compression (Lossless Only)	1.2.840.10008.1.2.4.90	SCP	None
		JPEG 2000 Image Compression	1.2.840.10008.1.2.4.91	SCP	None
Positron Emission Tomography Image Storage	1.2.840.10008.5.1.4.1.1.128	Implicit VR Little Endian Transfer Syntax	1.2.840.10008.1.2	SCP	None
		Explicit VR Little Endian Transfer Syntax	1.2.840.10008.1.2.1	SCP	None
		Explicit VR Big Endian Transfer Syntax	1.2.840.10008.1.2.2	SCP	None
		RLE Transfer Syntax	1.2.840.10008.1.2.5	SCP	None
		JPEG Baseline Coding Process 1 Transfer Syntax	1.2.840.10008.1.2.4.50	SCP	None
		JPEG Extended (Process 2 & 4)	1.2.840.10008.1.2.4.51	SCP	None
		JPEG Lossless, Non-Hierarchical (Process 14)	1.2.840.10008.1.2.4.57	SCP	None

Presentation Context Table					
		JPEG Lossless, Non-Hierarchical, (Process 14 [Selection Value 1]):	1.2.840.10008.1.2.4.70	SCP	None
		JPEG 2000 Image Compression (Lossless Only)	1.2.840.10008.1.2.4.90	SCP	None
		JPEG 2000 Image Compression	1.2.840.10008.1.2.4.91	SCP	None
Standalone PET Curve Storage	1.2.840.10008.5.1.4.1.1.129	Implicit VR Little Endian Transfer Syntax	1.2.840.10008.1.2	SCP	None
		Explicit VR Little Endian Transfer Syntax	1.2.840.10008.1.2.1	SCP	None
		Explicit VR Big Endian Transfer Syntax	1.2.840.10008.1.2.2	SCP	None
		RLE Transfer Syntax	1.2.840.10008.1.2.5	SCP	None
		JPEG Baseline Coding Process 1 Transfer Syntax	1.2.840.10008.1.2.4.50	SCP	None
		JPEG Extended (Process 2 & 4)	1.2.840.10008.1.2.4.51	SCP	None
		JPEG Lossless, Non-Hierarchical (Process 14)	1.2.840.10008.1.2.4.57	SCP	None
		JPEG Lossless, Non-Hierarchical, (Process 14 [Selection Value 1]):	1.2.840.10008.1.2.4.70	SCP	None
		JPEG 2000 Image Compression (Lossless Only)	1.2.840.10008.1.2.4.90	SCP	None
		JPEG 2000 Image Compression	1.2.840.10008.1.2.4.91	SCP	None
CT Image Storage	1.2.840.10008.5.1.4.1.1.2	Implicit VR Little Endian Transfer Syntax	1.2.840.10008.1.2	SCP	None

Presentation Context Table					
		Explicit VR Little Endian Transfer Syntax	1.2.840.10008.1.2.1	SCP	None
		Explicit VR Big Endian Transfer Syntax	1.2.840.10008.1.2.2	SCP	None
		RLE Transfer Syntax	1.2.840.10008.1.2.5	SCP	None
		JPEG Baseline Coding Process 1 Transfer Syntax	1.2.840.10008.1.2.4.50	SCP	None
		JPEG Extended (Process 2 & 4)	1.2.840.10008.1.2.4.51	SCP	None
		JPEG Lossless, Non-Hierarchical (Process 14)	1.2.840.10008.1.2.4.57	SCP	None
		JPEG Lossless, Non-Hierarchical, (Process 14 [Selection Value 1]):	1.2.840.10008.1.2.4.70	SCP	None
		JPEG 2000 Image Compression (Lossless Only)	1.2.840.10008.1.2.4.90	SCP	None
		JPEG 2000 Image Compression	1.2.840.10008.1.2.4.91	SCP	None
Nuclear Medicine Image Storage	1.2.840.10008.5.1.4.1.1.20	Implicit VR Little Endian Transfer Syntax	1.2.840.10008.1.2	SCP	None
		Explicit VR Little Endian Transfer Syntax	1.2.840.10008.1.2.1	SCP	None
		Explicit VR Big Endian Transfer Syntax	1.2.840.10008.1.2.2	SCP	None
		RLE Transfer Syntax	1.2.840.10008.1.2.5	SCP	None
		JPEG Baseline Coding Process 1 Transfer Syntax	1.2.840.10008.1.2.4.50	SCP	None
		JPEG Extended (Process 2 & 4)	1.2.840.10008.1.2.4.51	SCP	None

Presentation Context Table					
		JPEG Lossless, Non-Hierarchical (Process 14)	1.2.840.10008.1.2.4.57	SCP	None
		JPEG Lossless, Non-Hierarchical, (Process 14 [Selection Value 1]):	1.2.840.10008.1.2.4.70	SCP	None
		JPEG 2000 Image Compression (Lossless Only)	1.2.840.10008.1.2.4.90	SCP	None
		JPEG 2000 Image Compression	1.2.840.10008.1.2.4.91	SCP	None
Ultrasound Multi-Frame Image Storage (Retired)	1.2.840.10008.5.1.4.1.1.3	Implicit VR Little Endian Transfer Syntax	1.2.840.10008.1.2	SCP	None
		Explicit VR Little Endian Transfer Syntax	1.2.840.10008.1.2.1	SCP	None
		Explicit VR Big Endian Transfer Syntax	1.2.840.10008.1.2.2	SCP	None
		RLE Transfer Syntax	1.2.840.10008.1.2.5	SCP	None
		JPEG Baseline Coding Process 1 Transfer Syntax	1.2.840.10008.1.2.4.50	SCP	None
		JPEG Extended (Process 2 & 4)	1.2.840.10008.1.2.4.51	SCP	None
		JPEG Lossless, Non-Hierarchical (Process 14)	1.2.840.10008.1.2.4.57	SCP	None
		JPEG Lossless, Non-Hierarchical, (Process 14 [Selection Value 1]):	1.2.840.10008.1.2.4.70	SCP	None
		JPEG 2000 Image Compression (Lossless Only)	1.2.840.10008.1.2.4.90	SCP	None

Presentation Context Table					
		JPEG 2000 Image Compression	1.2.840.10008.1.2.4.91	SCP	None
Ultrasound Multi-Frame Image Storage	1.2.840.10008.5.1.4.1.1.3.1	Implicit VR Little Endian Transfer Syntax	1.2.840.10008.1.2	SCP	None
		Explicit VR Little Endian Transfer Syntax	1.2.840.10008.1.2.1	SCP	None
		Explicit VR Big Endian Transfer Syntax	1.2.840.10008.1.2.2	SCP	None
		RLE Transfer Syntax	1.2.840.10008.1.2.5	SCP	None
		JPEG Baseline Coding Process 1 Transfer Syntax	1.2.840.10008.1.2.4.50	SCP	None
		JPEG Extended (Process 2 & 4)	1.2.840.10008.1.2.4.51	SCP	None
		JPEG Lossless, Non-Hierarchical (Process 14)	1.2.840.10008.1.2.4.57	SCP	None
		JPEG Lossless, Non-Hierarchical, (Process 14 [Selection Value 1]):	1.2.840.10008.1.2.4.70	SCP	None
		JPEG 2000 Image Compression (Lossless Only)	1.2.840.10008.1.2.4.90	SCP	None
		JPEG 2000 Image Compression	1.2.840.10008.1.2.4.91	SCP	None
MR Image Storage	1.2.840.10008.5.1.4.1.1.4	Implicit VR Little Endian Transfer Syntax	1.2.840.10008.1.2	SCP	None
		Explicit VR Little Endian Transfer Syntax	1.2.840.10008.1.2.1	SCP	None
		Explicit VR Big Endian Transfer Syntax	1.2.840.10008.1.2.2	SCP	None
		RLE Transfer Syntax	1.2.840.10008.1.2.5	SCP	None

Presentation Context Table					
		JPEG Baseline Coding Process 1 Transfer Syntax	1.2.840.10008.1.2.4.50	SCP	None
		JPEG Extended (Process 2 & 4)	1.2.840.10008.1.2.4.51	SCP	None
		JPEG Lossless, Non-Hierarchical (Process 14)	1.2.840.10008.1.2.4.57	SCP	None
		JPEG Lossless, Non-Hierarchical, (Process 14 [Selection Value 1]):	1.2.840.10008.1.2.4.70	SCP	None
		JPEG 2000 Image Compression (Lossless Only)	1.2.840.10008.1.2.4.90	SCP	None
		JPEG 2000 Image Compression	1.2.840.10008.1.2.4.91	SCP	None
Enhance MR Image Storage	1.2.840.10008.5.1.4.1.1.4.1	Implicit VR Little Endian Transfer Syntax	1.2.840.10008.1.2	SCP	None
		Explicit VR Little Endian Transfer Syntax	1.2.840.10008.1.2.1	SCP	None
		Explicit VR Big Endian Transfer Syntax	1.2.840.10008.1.2.2	SCP	None
		RLE Transfer Syntax	1.2.840.10008.1.2.5	SCP	None
		JPEG Baseline Coding Process 1 Transfer Syntax	1.2.840.10008.1.2.4.50	SCP	None
		JPEG Extended (Process 2 & 4)	1.2.840.10008.1.2.4.51	SCP	None
		JPEG Lossless, Non-Hierarchical (Process 14)	1.2.840.10008.1.2.4.57	SCP	None
		JPEG Lossless, Non-Hierarchical, (Process 14 [Selection Value 1]):	1.2.840.10008.1.2.4.70	SCP	None

Presentation Context Table					
		JPEG 2000 Image Compression (Lossless Only)	1.2.840.10008.1.2.4.90	SCP	None
		JPEG 2000 Image Compression	1.2.840.10008.1.2.4.91	SCP	None
MR Spectroscopy Storage	1.2.840.10008.5.1.4.1.1.4.2	Implicit VR Little Endian Transfer Syntax	1.2.840.10008.1.2	SCP	None
		Explicit VR Little Endian Transfer Syntax	1.2.840.10008.1.2.1	SCP	None
		Explicit VR Big Endian Transfer Syntax	1.2.840.10008.1.2.2	SCP	None
		RLE Transfer Syntax	1.2.840.10008.1.2.5	SCP	None
		JPEG Baseline Coding Process 1 Transfer Syntax	1.2.840.10008.1.2.4.50	SCP	None
		JPEG Extended (Process 2 & 4)	1.2.840.10008.1.2.4.51	SCP	None
		JPEG Lossless, Non-Hierarchical (Process 14)	1.2.840.10008.1.2.4.57	SCP	None
		JPEG Lossless, Non-Hierarchical, (Process 14 [Selection Value 1]):	1.2.840.10008.1.2.4.70	SCP	None
		JPEG 2000 Image Compression (Lossless Only)	1.2.840.10008.1.2.4.90	SCP	None
		JPEG 2000 Image Compression	1.2.840.10008.1.2.4.91	SCP	None
RT Image Storage	1.2.840.10008.5.1.4.1.1.481.1	Implicit VR Little Endian Transfer Syntax	1.2.840.10008.1.2	SCP	None
		Explicit VR Little Endian Transfer Syntax	1.2.840.10008.1.2.1	SCP	None

Presentation Context Table					
		Explicit VR Big Endian Transfer Syntax	1.2.840.10008.1.2.2	SCP	None
		RLE Transfer Syntax	1.2.840.10008.1.2.5	SCP	None
		JPEG Baseline Coding Process 1 Transfer Syntax	1.2.840.10008.1.2.4.50	SCP	None
		JPEG Extended (Process 2 & 4)	1.2.840.10008.1.2.4.51	SCP	None
		JPEG Lossless, Non-Hierarchical (Process 14)	1.2.840.10008.1.2.4.57	SCP	None
		JPEG Lossless, Non-Hierarchical, (Process 14 [Selection Value 1]):	1.2.840.10008.1.2.4.70	SCP	None
		JPEG 2000 Image Compression (Lossless Only)	1.2.840.10008.1.2.4.90	SCP	None
		JPEG 2000 Image Compression	1.2.840.10008.1.2.4.91	SCP	None
RT Dose Storage	1.2.840.10008.5.1.4.1.1.481.2	Implicit VR Little Endian Transfer Syntax	1.2.840.10008.1.2	SCP	None
		Explicit VR Little Endian Transfer Syntax	1.2.840.10008.1.2.1	SCP	None
		Explicit VR Big Endian Transfer Syntax	1.2.840.10008.1.2.2	SCP	None
		RLE Transfer Syntax	1.2.840.10008.1.2.5	SCP	None
		JPEG Baseline Coding Process 1 Transfer Syntax	1.2.840.10008.1.2.4.50	SCP	None
		JPEG Extended (Process 2 & 4)	1.2.840.10008.1.2.4.51	SCP	None
		JPEG Lossless, Non-Hierarchical (Process 14)	1.2.840.10008.1.2.4.57	SCP	None



Presentation Context Table					
		JPEG Lossless, Non-Hierarchical, (Process 14 [Selection Value 1]):	1.2.840.10008.1.2.4.70	SCP	None
		JPEG 2000 Image Compression (Lossless Only)	1.2.840.10008.1.2.4.90	SCP	None
		JPEG 2000 Image Compression	1.2.840.10008.1.2.4.91	SCP	None
RT Structure Set Storage	1.2.840.10008.5.1.4.1.1.481.3	Implicit VR Little Endian Transfer Syntax	1.2.840.10008.1.2	SCP	None
		Explicit VR Little Endian Transfer Syntax	1.2.840.10008.1.2.1	SCP	None
		Explicit VR Big Endian Transfer Syntax	1.2.840.10008.1.2.2	SCP	None
		RLE Transfer Syntax	1.2.840.10008.1.2.5	SCP	None
		JPEG Baseline Coding Process 1 Transfer Syntax	1.2.840.10008.1.2.4.50	SCP	None
		JPEG Extended (Process 2 & 4)	1.2.840.10008.1.2.4.51	SCP	None
		JPEG Lossless, Non-Hierarchical (Process 14)	1.2.840.10008.1.2.4.57	SCP	None
		JPEG Lossless, Non-Hierarchical, (Process 14 [Selection Value 1]):	1.2.840.10008.1.2.4.70	SCP	None
		JPEG 2000 Image Compression (Lossless Only)	1.2.840.10008.1.2.4.90	SCP	None
		JPEG 2000 Image Compression	1.2.840.10008.1.2.4.91	SCP	None
RT Beams Treatment Record Storage	1.2.840.10008.5.1.4.1.1.481.4	Implicit VR Little Endian Transfer Syntax	1.2.840.10008.1.2	SCP	None

Presentation Context Table					
		Explicit VR Little Endian Transfer Syntax	1.2.840.10008.1.2.1	SCP	None
		Explicit VR Big Endian Transfer Syntax	1.2.840.10008.1.2.2	SCP	None
		RLE Transfer Syntax	1.2.840.10008.1.2.5	SCP	None
		JPEG Baseline Coding Process 1 Transfer Syntax	1.2.840.10008.1.2.4.50	SCP	None
		JPEG Extended (Process 2 & 4)	1.2.840.10008.1.2.4.51	SCP	None
		JPEG Lossless, Non-Hierarchical (Process 14)	1.2.840.10008.1.2.4.57	SCP	None
		JPEG Lossless, Non-Hierarchical, (Process 14 [Selection Value 1]):	1.2.840.10008.1.2.4.70	SCP	None
		JPEG 2000 Image Compression (Lossless Only)	1.2.840.10008.1.2.4.90	SCP	None
		JPEG 2000 Image Compression	1.2.840.10008.1.2.4.91	SCP	None
RT Plan Storage	1.2.840.10008.5.1.4.1.1.481.5	Implicit VR Little Endian Transfer Syntax	1.2.840.10008.1.2	SCP	None
		Explicit VR Little Endian Transfer Syntax	1.2.840.10008.1.2.1	SCP	None
		Explicit VR Big Endian Transfer Syntax	1.2.840.10008.1.2.2	SCP	None
		RLE Transfer Syntax	1.2.840.10008.1.2.5	SCP	None
		JPEG Baseline Coding Process 1 Transfer Syntax	1.2.840.10008.1.2.4.50	SCP	None
		JPEG Extended (Process 2 & 4)	1.2.840.10008.1.2.4.51	SCP	None

Presentation Context Table					
		JPEG Lossless, Non-Hierarchical (Process 14)	1.2.840.10008.1.2.4.57	SCP	None
		JPEG Lossless, Non-Hierarchical, (Process 14 [Selection Value 1]):	1.2.840.10008.1.2.4.70	SCP	None
		JPEG 2000 Image Compression (Lossless Only)	1.2.840.10008.1.2.4.90	SCP	None
		JPEG 2000 Image Compression	1.2.840.10008.1.2.4.91	SCP	None
RT Brachy Treatment Record Storage	1.2.840.10008.5.1.4.1.1.481.6	Implicit VR Little Endian Transfer Syntax	1.2.840.10008.1.2	SCP	None
		Explicit VR Little Endian Transfer Syntax	1.2.840.10008.1.2.1	SCP	None
		Explicit VR Big Endian Transfer Syntax	1.2.840.10008.1.2.2	SCP	None
		RLE Transfer Syntax	1.2.840.10008.1.2.5	SCP	None
		JPEG Baseline Coding Process 1 Transfer Syntax	1.2.840.10008.1.2.4.50	SCP	None
		JPEG Extended (Process 2 & 4)	1.2.840.10008.1.2.4.51	SCP	None
		JPEG Lossless, Non-Hierarchical (Process 14)	1.2.840.10008.1.2.4.57	SCP	None
		JPEG Lossless, Non-Hierarchical, (Process 14 [Selection Value 1]):	1.2.840.10008.1.2.4.70	SCP	None
		JPEG 2000 Image Compression (Lossless Only)	1.2.840.10008.1.2.4.90	SCP	None

Presentation Context Table					
		JPEG 2000 Image Compression	1.2.840.10008.1.2.4.91	SCP	None
RT Treatment Summary Record Storage	1.2.840.10008.5.1.4.1.1.481.7	Implicit VR Little Endian Transfer Syntax	1.2.840.10008.1.2	SCP	None
		Explicit VR Little Endian Transfer Syntax	1.2.840.10008.1.2.1	SCP	None
		Explicit VR Big Endian Transfer Syntax	1.2.840.10008.1.2.2	SCP	None
		RLE Transfer Syntax	1.2.840.10008.1.2.5	SCP	None
		JPEG Baseline Coding Process 1 Transfer Syntax	1.2.840.10008.1.2.4.50	SCP	None
		JPEG Extended (Process 2 & 4)	1.2.840.10008.1.2.4.51	SCP	None
		JPEG Lossless, Non-Hierarchical (Process 14)	1.2.840.10008.1.2.4.57	SCP	None
		JPEG Lossless, Non-Hierarchical, (Process 14 [Selection Value 1]):	1.2.840.10008.1.2.4.70	SCP	None
		JPEG 2000 Image Compression (Lossless Only)	1.2.840.10008.1.2.4.90	SCP	None
		JPEG 2000 Image Compression	1.2.840.10008.1.2.4.91	SCP	None
Nuclear Medicine Image Storage (Retired)	1.2.840.10008.5.1.4.1.1.5	Implicit VR Little Endian Transfer Syntax	1.2.840.10008.1.2	SCP	None
		Explicit VR Little Endian Transfer Syntax	1.2.840.10008.1.2.1	SCP	None
		Explicit VR Big Endian Transfer Syntax	1.2.840.10008.1.2.2	SCP	None
		RLE Transfer Syntax	1.2.840.10008.1.2.5	SCP	None

Presentation Context Table					
		JPEG Baseline Coding Process 1 Transfer Syntax	1.2.840.10008.1.2.4.50	SCP	None
		JPEG Extended (Process 2 & 4)	1.2.840.10008.1.2.4.51	SCP	None
		JPEG Lossless, Non-Hierarchical (Process 14)	1.2.840.10008.1.2.4.57	SCP	None
		JPEG Lossless, Non-Hierarchical, (Process 14 [Selection Value 1]):	1.2.840.10008.1.2.4.70	SCP	None
		JPEG 2000 Image Compression (Lossless Only)	1.2.840.10008.1.2.4.90	SCP	None
		JPEG 2000 Image Compression	1.2.840.10008.1.2.4.91	SCP	None
Ultrasound Image Storage (Retired)	1.2.840.10008.5.1.4.1.1.6	Implicit VR Little Endian Transfer Syntax	1.2.840.10008.1.2	SCP	None
		Explicit VR Little Endian Transfer Syntax	1.2.840.10008.1.2.1	SCP	None
		Explicit VR Big Endian Transfer Syntax	1.2.840.10008.1.2.2	SCP	None
		RLE Transfer Syntax	1.2.840.10008.1.2.5	SCP	None
		JPEG Baseline Coding Process 1 Transfer Syntax	1.2.840.10008.1.2.4.50	SCP	None
		JPEG Extended (Process 2 & 4)	1.2.840.10008.1.2.4.51	SCP	None
		JPEG Lossless, Non-Hierarchical (Process 14)	1.2.840.10008.1.2.4.57	SCP	None
		JPEG Lossless, Non-Hierarchical, (Process 14 [Selection Value 1]):	1.2.840.10008.1.2.4.70	SCP	None

Presentation Context Table					
		JPEG 2000 Image Compression (Lossless Only)	1.2.840.10008.1.2.4.90	SCP	None
		JPEG 2000 Image Compression	1.2.840.10008.1.2.4.91	SCP	None
Ultrasound Image Storage	1.2.840.10008.5.1.4.1.1.6.1	Implicit VR Little Endian Transfer Syntax	1.2.840.10008.1.2	SCP	None
		Explicit VR Little Endian Transfer Syntax	1.2.840.10008.1.2.1	SCP	None
		Explicit VR Big Endian Transfer Syntax	1.2.840.10008.1.2.2	SCP	None
		RLE Transfer Syntax	1.2.840.10008.1.2.5	SCP	None
		JPEG Baseline Coding Process 1 Transfer Syntax	1.2.840.10008.1.2.4.50	SCP	None
		JPEG Extended (Process 2 & 4)	1.2.840.10008.1.2.4.51	SCP	None
		JPEG Lossless, Non-Hierarchical (Process 14)	1.2.840.10008.1.2.4.57	SCP	None
		JPEG Lossless, Non-Hierarchical, (Process 14 [Selection Value 1]):	1.2.840.10008.1.2.4.70	SCP	None
		JPEG 2000 Image Compression (Lossless Only)	1.2.840.10008.1.2.4.90	SCP	None
		JPEG 2000 Image Compression	1.2.840.10008.1.2.4.91	SCP	None
Raw Data Storage	1.2.840.10008.5.1.4.1.1.6.6	Implicit VR Little Endian Transfer Syntax	1.2.840.10008.1.2	SCP	None
		Explicit VR Little Endian Transfer Syntax	1.2.840.10008.1.2.1	SCP	None

Presentation Context Table					
		Explicit VR Big Endian Transfer Syntax	1.2.840.10008.1.2.2	SCP	None
		RLE Transfer Syntax	1.2.840.10008.1.2.5	SCP	None
		JPEG Baseline Coding Process 1 Transfer Syntax	1.2.840.10008.1.2.4.50	SCP	None
		JPEG Extended (Process 2 & 4)	1.2.840.10008.1.2.4.51	SCP	None
		JPEG Lossless, Non-Hierarchical (Process 14)	1.2.840.10008.1.2.4.57	SCP	None
		JPEG Lossless, Non-Hierarchical, (Process 14 [Selection Value 1]):	1.2.840.10008.1.2.4.70	SCP	None
		JPEG 2000 Image Compression (Lossless Only)	1.2.840.10008.1.2.4.90	SCP	None
		JPEG 2000 Image Compression	1.2.840.10008.1.2.4.91	SCP	None
Secondary Capture Image Storage	1.2.840.10008.5.1.4.1.1.7	Implicit VR Little Endian Transfer Syntax	1.2.840.10008.1.2	SCP	None
		Explicit VR Little Endian Transfer Syntax	1.2.840.10008.1.2.1	SCP	None
		Explicit VR Big Endian Transfer Syntax	1.2.840.10008.1.2.2	SCP	None
		RLE Transfer Syntax	1.2.840.10008.1.2.5	SCP	None
		JPEG Baseline Coding Process 1 Transfer Syntax	1.2.840.10008.1.2.4.50	SCP	None
		JPEG Extended (Process 2 & 4)	1.2.840.10008.1.2.4.51	SCP	None
		JPEG Lossless, Non-Hierarchical (Process 14)	1.2.840.10008.1.2.4.57	SCP	None

Presentation Context Table					
		JPEG Lossless, Non-Hierarchical, (Process 14 [Selection Value 1]):	1.2.840.10008.1.2.4.70	SCP	None
		JPEG 2000 Image Compression (Lossless Only)	1.2.840.10008.1.2.4.90	SCP	None
		JPEG 2000 Image Compression	1.2.840.10008.1.2.4.91	SCP	None
Multi-frame Single Bit Secondary Capture Image Storage	1.2.840.10008.5.1.4.1.1.7.1	Implicit VR Little Endian Transfer Syntax	1.2.840.10008.1.2	SCP	None
		Explicit VR Little Endian Transfer Syntax	1.2.840.10008.1.2.1	SCP	None
		Explicit VR Big Endian Transfer Syntax	1.2.840.10008.1.2.2	SCP	None
Multi-frame Grayscale Byte Secondary Capture Image Storage	1.2.840.10008.5.1.4.1.1.7.2	Implicit VR Little Endian Transfer Syntax	1.2.840.10008.1.2	SCP	None
		Explicit VR Little Endian Transfer Syntax	1.2.840.10008.1.2.1	SCP	None
		Explicit VR Big Endian Transfer Syntax	1.2.840.10008.1.2.2	SCP	None
		RLE Transfer Syntax	1.2.840.10008.1.2.5	SCP	None
		JPEG Baseline Coding Process 1 Transfer Syntax	1.2.840.10008.1.2.4.50	SCP	None
		JPEG Extended (Process 2 & 4)	1.2.840.10008.1.2.4.51	SCP	None
		JPEG Lossless, Non-Hierarchical (Process 14)	1.2.840.10008.1.2.4.57	SCP	None
		JPEG Lossless, Non-Hierarchical, (Process 14 [Selection Value 1]):	1.2.840.10008.1.2.4.70	SCP	None



Presentation Context Table					
		JPEG 2000 Image Compression (Lossless Only)	1.2.840.10008.1.2.4.90	SCP	None
		JPEG 2000 Image Compression	1.2.840.10008.1.2.4.91	SCP	None
Multi-frame Grayscale Word Secondary Capture Image Storage	1.2.840.10008.5.1.4.1.1.7.3	Implicit VR Little Endian Transfer Syntax	1.2.840.10008.1.2	SCP	None
		Explicit VR Little Endian Transfer Syntax	1.2.840.10008.1.2.1	SCP	None
		Explicit VR Big Endian Transfer Syntax	1.2.840.10008.1.2.2	SCP	None
		RLE Transfer Syntax	1.2.840.10008.1.2.5	SCP	None
		JPEG Baseline Coding Process 1 Transfer Syntax	1.2.840.10008.1.2.4.50	SCP	None
		JPEG Extended (Process 2 & 4)	1.2.840.10008.1.2.4.51	SCP	None
		JPEG Lossless, Non-Hierarchical (Process 14)	1.2.840.10008.1.2.4.57	SCP	None
		JPEG Lossless, Non-Hierarchical, (Process 14 [Selection Value 1]):	1.2.840.10008.1.2.4.70	SCP	None
		JPEG 2000 Image Compression (Lossless Only)	1.2.840.10008.1.2.4.90	SCP	None
		JPEG 2000 Image Compression	1.2.840.10008.1.2.4.91	SCP	None
Multi-frame True Color Secondary Capture Image Storage	1.2.840.10008.5.1.4.1.1.7.4	Implicit VR Little Endian Transfer Syntax	1.2.840.10008.1.2	SCP	None
		Explicit VR Little Endian Transfer Syntax	1.2.840.10008.1.2.1	SCP	None

Presentation Context Table					
		Explicit VR Big Endian Transfer Syntax	1.2.840.10008.1.2.2	SCP	None
		RLE Transfer Syntax	1.2.840.10008.1.2.5	SCP	None
		JPEG Baseline Coding Process 1 Transfer Syntax	1.2.840.10008.1.2.4.50	SCP	None
		JPEG Extended (Process 2 & 4)	1.2.840.10008.1.2.4.51	SCP	None
		JPEG Lossless, Non-Hierarchical (Process 14)	1.2.840.10008.1.2.4.57	SCP	None
		JPEG Lossless, Non-Hierarchical, (Process 14 [Selection Value 1]):	1.2.840.10008.1.2.4.70	SCP	None
		JPEG 2000 Image Compression (Lossless Only)	1.2.840.10008.1.2.4.90	SCP	None
		JPEG 2000 Image Compression	1.2.840.10008.1.2.4.91	SCP	None
VL Endoscopic Image Storage	1.2.840.10008.5.1.4.1.1.77.1.1	Implicit VR Little Endian Transfer Syntax	1.2.840.10008.1.2	SCP	None
		Explicit VR Little Endian Transfer Syntax	1.2.840.10008.1.2.1	SCP	None
		Explicit VR Big Endian Transfer Syntax	1.2.840.10008.1.2.2	SCP	None
		RLE Transfer Syntax	1.2.840.10008.1.2.5	SCP	None
		JPEG Baseline Coding Process 1 Transfer Syntax	1.2.840.10008.1.2.4.50	SCP	None
		JPEG Extended (Process 2 & 4)	1.2.840.10008.1.2.4.51	SCP	None
		JPEG Lossless, Non-Hierarchical (Process 14)	1.2.840.10008.1.2.4.57	SCP	None

Presentation Context Table					
		JPEG Lossless, Non-Hierarchical, (Process 14 [Selection Value 1]):	1.2.840.10008.1.2.4.70	SCP	None
		JPEG 2000 Image Compression (Lossless Only)	1.2.840.10008.1.2.4.90	SCP	None
		JPEG 2000 Image Compression	1.2.840.10008.1.2.4.91	SCP	None
VL Microscopic Image Storage	1.2.840.10008.5.1.4.1.1.77.1.2	Implicit VR Little Endian Transfer Syntax	1.2.840.10008.1.2	SCP	None
		Explicit VR Little Endian Transfer Syntax	1.2.840.10008.1.2.1	SCP	None
		Explicit VR Big Endian Transfer Syntax	1.2.840.10008.1.2.2	SCP	None
		RLE Transfer Syntax	1.2.840.10008.1.2.5	SCP	None
		JPEG Baseline Coding Process 1 Transfer Syntax	1.2.840.10008.1.2.4.50	SCP	None
		JPEG Extended (Process 2 & 4)	1.2.840.10008.1.2.4.51	SCP	None
		JPEG Lossless, Non-Hierarchical (Process 14)	1.2.840.10008.1.2.4.57	SCP	None
		JPEG Lossless, Non-Hierarchical, (Process 14 [Selection Value 1]):	1.2.840.10008.1.2.4.70	SCP	None
		JPEG 2000 Image Compression (Lossless Only)	1.2.840.10008.1.2.4.90	SCP	None
		JPEG 2000 Image Compression	1.2.840.10008.1.2.4.91	SCP	None
VL Slide-Coordinates Microscopic	1.2.840.10008.5.1.4.1.1.77.1.3	Implicit VR Little Endian Transfer Syntax	1.2.840.10008.1.2	SCP	None

Presentation Context Table					
Image Storage		Explicit VR Little Endian Transfer Syntax	1.2.840.10008.1.2.1	SCP	None
		Explicit VR Big Endian Transfer Syntax	1.2.840.10008.1.2.2	SCP	None
		RLE Transfer Syntax	1.2.840.10008.1.2.5	SCP	None
		JPEG Baseline Coding Process 1 Transfer Syntax	1.2.840.10008.1.2.4.50	SCP	None
		JPEG Extended (Process 2 & 4)	1.2.840.10008.1.2.4.51	SCP	None
		JPEG Lossless, Non-Hierarchical (Process 14)	1.2.840.10008.1.2.4.57	SCP	None
		JPEG Lossless, Non-Hierarchical, (Process 14 [Selection Value 1]):	1.2.840.10008.1.2.4.70	SCP	None
		JPEG 2000 Image Compression (Lossless Only)	1.2.840.10008.1.2.4.90	SCP	None
		JPEG 2000 Image Compression	1.2.840.10008.1.2.4.91	SCP	None
VL Photographic Image Storage	1.2.840.10008.5.1.4.1.1.77.1.4	Implicit VR Little Endian Transfer Syntax	1.2.840.10008.1.2	SCP	None
		Explicit VR Little Endian Transfer Syntax	1.2.840.10008.1.2.1	SCP	None
		Explicit VR Big Endian Transfer Syntax	1.2.840.10008.1.2.2	SCP	None
		RLE Transfer Syntax	1.2.840.10008.1.2.5	SCP	None
		JPEG Baseline Coding Process 1 Transfer Syntax	1.2.840.10008.1.2.4.50	SCP	None
		JPEG Extended (Process 2 & 4)	1.2.840.10008.1.2.4.51	SCP	None

Presentation Context Table					
		JPEG Lossless, Non-Hierarchical (Process 14)	1.2.840.10008.1.2.4.57	SCP	None
		JPEG Lossless, Non-Hierarchical, (Process 14 [Selection Value 1]):	1.2.840.10008.1.2.4.70	SCP	None
		JPEG 2000 Image Compression (Lossless Only)	1.2.840.10008.1.2.4.90	SCP	None
		JPEG 2000 Image Compression	1.2.840.10008.1.2.4.91	SCP	None
Standalone Overlay Storage	1.2.840.10008.5.1.4.1.1.8	Implicit VR Little Endian Transfer Syntax	1.2.840.10008.1.2	SCP	None
		Explicit VR Little Endian Transfer Syntax	1.2.840.10008.1.2.1	SCP	None
		Explicit VR Big Endian Transfer Syntax	1.2.840.10008.1.2.2	SCP	None
		RLE Transfer Syntax	1.2.840.10008.1.2.5	SCP	None
		JPEG Baseline Coding Process 1 Transfer Syntax	1.2.840.10008.1.2.4.50	SCP	None
		JPEG Extended (Process 2 & 4)	1.2.840.10008.1.2.4.51	SCP	None
		JPEG Lossless, Non-Hierarchical (Process 14)	1.2.840.10008.1.2.4.57	SCP	None
		JPEG Lossless, Non-Hierarchical, (Process 14 [Selection Value 1]):	1.2.840.10008.1.2.4.70	SCP	None
		JPEG 2000 Image Compression (Lossless Only)	1.2.840.10008.1.2.4.90	SCP	None

Presentation Context Table					
		JPEG 2000 Image Compression	1.2.840.10008.1.2.4.91	SCP	None
Basic Text Structured Reporting SOP Class	1.2.840.10008.5.1.4.1.1.88.11	Implicit VR Little Endian Transfer Syntax	1.2.840.10008.1.2	SCP	None
		Explicit VR Little Endian Transfer Syntax	1.2.840.10008.1.2.1	SCP	None
		Explicit VR Big Endian Transfer Syntax	1.2.840.10008.1.2.2	SCP	None
		RLE Transfer Syntax	1.2.840.10008.1.2.5	SCP	None
		JPEG Baseline Coding Process 1 Transfer Syntax	1.2.840.10008.1.2.4.50	SCP	None
		JPEG Extended (Process 2 & 4)	1.2.840.10008.1.2.4.51	SCP	None
		JPEG Lossless, Non-Hierarchical (Process 14)	1.2.840.10008.1.2.4.57	SCP	None
		JPEG Lossless, Non-Hierarchical, (Process 14 [Selection Value 1]):	1.2.840.10008.1.2.4.70	SCP	None
		JPEG 2000 Image Compression (Lossless Only)	1.2.840.10008.1.2.4.90	SCP	None
		JPEG 2000 Image Compression	1.2.840.10008.1.2.4.91	SCP	None
Enhanced Structured Reporting SOP Class	1.2.840.10008.5.1.4.1.1.88.22	Implicit VR Little Endian Transfer Syntax	1.2.840.10008.1.2	SCP	None
		Explicit VR Little Endian Transfer Syntax	1.2.840.10008.1.2.1	SCP	None
		Explicit VR Big Endian Transfer Syntax	1.2.840.10008.1.2.2	SCP	None
		RLE Transfer Syntax	1.2.840.10008.1.2.5	SCP	None

Presentation Context Table					
		JPEG Baseline Coding Process 1 Transfer Syntax	1.2.840.10008.1.2.4.50	SCP	None
		JPEG Extended (Process 2 & 4)	1.2.840.10008.1.2.4.51	SCP	None
		JPEG Lossless, Non-Hierarchical (Process 14)	1.2.840.10008.1.2.4.57	SCP	None
		JPEG Lossless, Non-Hierarchical, (Process 14 [Selection Value 1]):	1.2.840.10008.1.2.4.70	SCP	None
		JPEG 2000 Image Compression (Lossless Only)	1.2.840.10008.1.2.4.90	SCP	None
		JPEG 2000 Image Compression	1.2.840.10008.1.2.4.91	SCP	None
Comprehensive Structured Reporting SOP Class	1.2.840.10008.5.1.4.1.1.88.33	Implicit VR Little Endian Transfer Syntax	1.2.840.10008.1.2	SCP	None
		Explicit VR Little Endian Transfer Syntax	1.2.840.10008.1.2.1	SCP	None
		Explicit VR Big Endian Transfer Syntax	1.2.840.10008.1.2.2	SCP	None
		RLE Transfer Syntax	1.2.840.10008.1.2.5	SCP	None
		JPEG Baseline Coding Process 1 Transfer Syntax	1.2.840.10008.1.2.4.50	SCP	None
		JPEG Extended (Process 2 & 4)	1.2.840.10008.1.2.4.51	SCP	None
		JPEG Lossless, Non-Hierarchical (Process 14)	1.2.840.10008.1.2.4.57	SCP	None
		JPEG Lossless, Non-Hierarchical, (Process 14 [Selection Value 1]):	1.2.840.10008.1.2.4.70	SCP	None

Presentation Context Table					
		JPEG 2000 Image Compression (Lossless Only)	1.2.840.10008.1.2.4.90	SCP	None
		JPEG 2000 Image Compression	1.2.840.10008.1.2.4.91	SCP	None
Mammography CAD SR SOP Class	1.2.840.10008.5.1.4.1.1.88.50	Implicit VR Little Endian Transfer Syntax	1.2.840.10008.1.2	SCP	None
		Explicit VR Little Endian Transfer Syntax	1.2.840.10008.1.2.1	SCP	None
		Explicit VR Big Endian Transfer Syntax	1.2.840.10008.1.2.2	SCP	None
		RLE Transfer Syntax	1.2.840.10008.1.2.5	SCP	None
		JPEG Baseline Coding Process 1 Transfer Syntax	1.2.840.10008.1.2.4.50	SCP	None
		JPEG Extended (Process 2 & 4)	1.2.840.10008.1.2.4.51	SCP	None
		JPEG Lossless, Non-Hierarchical (Process 14)	1.2.840.10008.1.2.4.57	SCP	None
		JPEG Lossless, Non-Hierarchical, (Process 14 [Selection Value 1]):	1.2.840.10008.1.2.4.70	SCP	None
		JPEG 2000 Image Compression (Lossless Only)	1.2.840.10008.1.2.4.90	SCP	None
		JPEG 2000 Image Compression	1.2.840.10008.1.2.4.91	SCP	None
Key Object Selection Document	1.2.840.10008.5.1.4.1.1.88.59	Implicit VR Little Endian Transfer Syntax	1.2.840.10008.1.2	SCP	None
		Explicit VR Little Endian Transfer Syntax	1.2.840.10008.1.2.1	SCP	None



Presentation Context Table					
		Explicit VR Big Endian Transfer Syntax	1.2.840.10008.1.2.2	SCP	None
		RLE Transfer Syntax	1.2.840.10008.1.2.5	SCP	None
		JPEG Baseline Coding Process 1 Transfer Syntax	1.2.840.10008.1.2.4.50	SCP	None
		JPEG Extended (Process 2 & 4)	1.2.840.10008.1.2.4.51	SCP	None
		JPEG Lossless, Non-Hierarchical (Process 14)	1.2.840.10008.1.2.4.57	SCP	None
		JPEG Lossless, Non-Hierarchical, (Process 14 [Selection Value 1]):	1.2.840.10008.1.2.4.70	SCP	None
		JPEG 2000 Image Compression (Lossless Only)	1.2.840.10008.1.2.4.90	SCP	None
		JPEG 2000 Image Compression	1.2.840.10008.1.2.4.91	SCP	None
Chest CAD SR Storage	1.2.840.10008.5.1.4.1.1.88.65	Implicit VR Little Endian Transfer Syntax	1.2.840.10008.1.2	SCP	None
		Explicit VR Little Endian Transfer Syntax	1.2.840.10008.1.2.1	SCP	None
		Explicit VR Big Endian Transfer Syntax	1.2.840.10008.1.2.2	SCP	None
		RLE Transfer Syntax	1.2.840.10008.1.2.5	SCP	None
		JPEG Baseline Coding Process 1 Transfer Syntax	1.2.840.10008.1.2.4.50	SCP	None
		JPEG Extended (Process 2 & 4)	1.2.840.10008.1.2.4.51	SCP	None
		JPEG Lossless, Non-Hierarchical (Process 14)	1.2.840.10008.1.2.4.57	SCP	None

Presentation Context Table					
		JPEG Lossless, Non-Hierarchical, (Process 14 [Selection Value 1]):	1.2.840.10008.1.2.4.70	SCP	None
		JPEG 2000 Image Compression (Lossless Only)	1.2.840.10008.1.2.4.90	SCP	None
		JPEG 2000 Image Compression	1.2.840.10008.1.2.4.91	SCP	None
Standalone Curve Storage	1.2.840.10008.5.1.4.1.1.9	Implicit VR Little Endian Transfer Syntax	1.2.840.10008.1.2	SCP	None
		Explicit VR Little Endian Transfer Syntax	1.2.840.10008.1.2.1	SCP	None
		Explicit VR Big Endian Transfer Syntax	1.2.840.10008.1.2.2	SCP	None
		RLE Transfer Syntax	1.2.840.10008.1.2.5	SCP	None
		JPEG Baseline Coding Process 1 Transfer Syntax	1.2.840.10008.1.2.4.50	SCP	None
		JPEG Extended (Process 2 & 4)	1.2.840.10008.1.2.4.51	SCP	None
		JPEG Lossless, Non-Hierarchical (Process 14)	1.2.840.10008.1.2.4.57	SCP	None
		JPEG Lossless, Non-Hierarchical, (Process 14 [Selection Value 1]):	1.2.840.10008.1.2.4.70	SCP	None
		JPEG 2000 Image Compression (Lossless Only)	1.2.840.10008.1.2.4.90	SCP	None
		JPEG 2000 Image Compression	1.2.840.10008.1.2.4.91	SCP	None
12-lead ECG Waveform Storage	1.2.840.10008.5.1.4.1.1.9.1.1	Implicit VR Little Endian Transfer Syntax	1.2.840.10008.1.2	SCP	None

Presentation Context Table					
		Explicit VR Little Endian Transfer Syntax	1.2.840.10008.1.2.1	SCP	None
		Explicit VR Big Endian Transfer Syntax	1.2.840.10008.1.2.2	SCP	None
		RLE Transfer Syntax	1.2.840.10008.1.2.5	SCP	None
		JPEG Baseline Coding Process 1 Transfer Syntax	1.2.840.10008.1.2.4.50	SCP	None
		JPEG Extended (Process 2 & 4)	1.2.840.10008.1.2.4.51	SCP	None
		JPEG Lossless, Non-Hierarchical (Process 14)	1.2.840.10008.1.2.4.57	SCP	None
		JPEG Lossless, Non-Hierarchical, (Process 14 [Selection Value 1]):	1.2.840.10008.1.2.4.70	SCP	None
		JPEG 2000 Image Compression (Lossless Only)	1.2.840.10008.1.2.4.90	SCP	None
		JPEG 2000 Image Compression	1.2.840.10008.1.2.4.91	SCP	None
General ECG Waveform Storage	1.2.840.10008.5.1.4.1.1.9.1.2	Implicit VR Little Endian Transfer Syntax	1.2.840.10008.1.2	SCP	None
		Explicit VR Little Endian Transfer Syntax	1.2.840.10008.1.2.1	SCP	None
		Explicit VR Big Endian Transfer Syntax	1.2.840.10008.1.2.2	SCP	None
		RLE Transfer Syntax	1.2.840.10008.1.2.5	SCP	None
		JPEG Baseline Coding Process 1 Transfer Syntax	1.2.840.10008.1.2.4.50	SCP	None
		JPEG Extended (Process 2 & 4)	1.2.840.10008.1.2.4.51	SCP	None

Presentation Context Table					
		JPEG Lossless, Non-Hierarchical (Process 14)	1.2.840.10008.1.2.4.57	SCP	None
		JPEG Lossless, Non-Hierarchical, (Process 14 [Selection Value 1]):	1.2.840.10008.1.2.4.70	SCP	None
		JPEG 2000 Image Compression (Lossless Only)	1.2.840.10008.1.2.4.90	SCP	None
		JPEG 2000 Image Compression	1.2.840.10008.1.2.4.91	SCP	None
Ambulatory ECG Waveform Storage	1.2.840.10008.5.1.4.1.1.9.1.3	Implicit VR Little Endian Transfer Syntax	1.2.840.10008.1.2	SCP	None
		Explicit VR Little Endian Transfer Syntax	1.2.840.10008.1.2.1	SCP	None
		Explicit VR Big Endian Transfer Syntax	1.2.840.10008.1.2.2	SCP	None
		RLE Transfer Syntax	1.2.840.10008.1.2.5	SCP	None
		JPEG Baseline Coding Process 1 Transfer Syntax	1.2.840.10008.1.2.4.50	SCP	None
		JPEG Extended (Process 2 & 4)	1.2.840.10008.1.2.4.51	SCP	None
		JPEG Lossless, Non-Hierarchical (Process 14)	1.2.840.10008.1.2.4.57	SCP	None
		JPEG Lossless, Non-Hierarchical, (Process 14 [Selection Value 1]):	1.2.840.10008.1.2.4.70	SCP	None
		JPEG 2000 Image Compression (Lossless Only)	1.2.840.10008.1.2.4.90	SCP	None

Presentation Context Table					
		JPEG 2000 Image Compression	1.2.840.10008.1.2.4.91	SCP	None
Hemodynamic Waveform Storage	1.2.840.10008.5.1.4.1.1.9.2.1	Implicit VR Little Endian Transfer Syntax	1.2.840.10008.1.2	SCP	None
		Explicit VR Little Endian Transfer Syntax	1.2.840.10008.1.2.1	SCP	None
		Explicit VR Big Endian Transfer Syntax	1.2.840.10008.1.2.2	SCP	None
		RLE Transfer Syntax	1.2.840.10008.1.2.5	SCP	None
		JPEG Baseline Coding Process 1 Transfer Syntax	1.2.840.10008.1.2.4.50	SCP	None
		JPEG Extended (Process 2 & 4)	1.2.840.10008.1.2.4.51	SCP	None
		JPEG Lossless, Non-Hierarchical (Process 14)	1.2.840.10008.1.2.4.57	SCP	None
		JPEG Lossless, Non-Hierarchical, (Process 14 [Selection Value 1]):	1.2.840.10008.1.2.4.70	SCP	None
		JPEG 2000 Image Compression (Lossless Only)	1.2.840.10008.1.2.4.90	SCP	None
		JPEG 2000 Image Compression	1.2.840.10008.1.2.4.91	SCP	None
Cardiac Electrophysiology Waveform Storage	1.2.840.10008.5.1.4.1.1.9.3.1	Implicit VR Little Endian Transfer Syntax	1.2.840.10008.1.2	SCP	None
		Explicit VR Little Endian Transfer Syntax	1.2.840.10008.1.2.1	SCP	None
		Explicit VR Big Endian Transfer Syntax	1.2.840.10008.1.2.2	SCP	None
		RLE Transfer Syntax	1.2.840.10008.1.2.5	SCP	None

Presentation Context Table					
		JPEG Baseline Coding Process 1 Transfer Syntax	1.2.840.10008.1.2.4.50	SCP	None
		JPEG Extended (Process 2 & 4)	1.2.840.10008.1.2.4.51	SCP	None
		JPEG Lossless, Non-Hierarchical (Process 14)	1.2.840.10008.1.2.4.57	SCP	None
		JPEG Lossless, Non-Hierarchical, (Process 14 [Selection Value 1]):	1.2.840.10008.1.2.4.70	SCP	None
		JPEG 2000 Image Compression (Lossless Only)	1.2.840.10008.1.2.4.90	SCP	None
		JPEG 2000 Image Compression	1.2.840.10008.1.2.4.91	SCP	None
Basic Voice Audio Waveform Storage	1.2.840.10008.5.1.4.1.1.9.4.1	Implicit VR Little Endian Transfer Syntax	1.2.840.10008.1.2	SCP	None
		Explicit VR Little Endian Transfer Syntax	1.2.840.10008.1.2.1	SCP	None
		Explicit VR Big Endian Transfer Syntax	1.2.840.10008.1.2.2	SCP	None
		RLE Transfer Syntax	1.2.840.10008.1.2.5	SCP	None
		JPEG Baseline Coding Process 1 Transfer Syntax	1.2.840.10008.1.2.4.50	SCP	None
		JPEG Extended (Process 2 & 4)	1.2.840.10008.1.2.4.51	SCP	None
		JPEG Lossless, Non-Hierarchical (Process 14)	1.2.840.10008.1.2.4.57	SCP	None
		JPEG Lossless, Non-Hierarchical, (Process 14 [Selection Value 1]):	1.2.840.10008.1.2.4.70	SCP	None

Presentation Context Table					
		JPEG 2000 Image Compression (Lossless Only)	1.2.840.10008.1.2.4.90	SCP	None
		JPEG 2000 Image Compression	1.2.840.10008.1.2.4.91	SCP	None
GE Nuclear Medicine private SOP Class	1.2.840113619.4.27	Implicit VR Little Endian Transfer Syntax	1.2.840.10008.1.2	SCP	None
		Explicit VR Little Endian Transfer Syntax	1.2.840.10008.1.2.1	SCP	None
		Explicit VR Big Endian Transfer Syntax	1.2.840.10008.1.2.2	SCP	None
		RLE Transfer Syntax	1.2.840.10008.1.2.5	SCP	None
		JPEG Baseline Coding Process 1 Transfer Syntax	1.2.840.10008.1.2.4.50	SCP	None
		JPEG Extended (Process 2 & 4)	1.2.840.10008.1.2.4.51	SCP	None
		JPEG Lossless, Non-Hierarchical (Process 14)	1.2.840.10008.1.2.4.57	SCP	None
		JPEG Lossless, Non-Hierarchical, (Process 14 [Selection Value 1]):	1.2.840.10008.1.2.4.70	SCP	None
		JPEG 2000 Image Compression (Lossless Only)	1.2.840.10008.1.2.4.90	SCP	None
		JPEG 2000 Image Compression	1.2.840.10008.1.2.4.91	SCP	None
Philips Private Gyroscan MR Spectrum	1.3.46.670589.11.0.0.12.1	Implicit VR Little Endian Transfer Syntax	1.2.840.10008.1.2	SCP	None
		Explicit VR Little Endian Transfer Syntax	1.2.840.10008.1.2.1	SCP	None

Presentation Context Table					
		Explicit VR Big Endian Transfer Syntax	1.2.840.10008.1.2.2	SCP	None
Philips Private Gyroscan MR Series Data	1.3.46.670589.11.0.0.12.2	Implicit VR Little Endian Transfer Syntax	1.2.840.10008.1.2	SCP	None
		Explicit VR Little Endian Transfer Syntax	1.2.840.10008.1.2.1	SCP	None
		Explicit VR Big Endian Transfer Syntax	1.2.840.10008.1.2.2	SCP	None
		RLE Transfer Syntax	1.2.840.10008.1.2.5	SCP	None
		JPEG Baseline Coding Process 1 Transfer Syntax	1.2.840.10008.1.2.4.50	SCP	None
		JPEG Extended (Process 2 & 4)	1.2.840.10008.1.2.4.51	SCP	None
		JPEG Lossless, Non-Hierarchical (Process 14)	1.2.840.10008.1.2.4.57	SCP	None
		JPEG Lossless, Non-Hierarchical, (Process 14 [Selection Value 1]):	1.2.840.10008.1.2.4.70	SCP	None
		JPEG 2000 Image Compression (Lossless Only)	1.2.840.10008.1.2.4.90	SCP	None
		JPEG 2000 Image Compression	1.2.840.10008.1.2.4.91	SCP	None
Philips Private Specialized XA Image	1.3.46.670589.2.3.1.1	Implicit VR Little Endian Transfer Syntax	1.2.840.10008.1.2	SCP	None
		Explicit VR Little Endian Transfer Syntax	1.2.840.10008.1.2.1	SCP	None
		Explicit VR Big Endian Transfer Syntax	1.2.840.10008.1.2.2	SCP	None
		RLE Transfer Syntax	1.2.840.10008.1.2.5	SCP	None



Presentation Context Table					
		JPEG Baseline Coding Process 1 Transfer Syntax	1.2.840.10008.1.2.4.50	SCP	None
		JPEG Extended (Process 2 & 4)	1.2.840.10008.1.2.4.51	SCP	None
		JPEG Lossless, Non-Hierarchical (Process 14)	1.2.840.10008.1.2.4.57	SCP	None
		JPEG Lossless, Non-Hierarchical, (Process 14 [Selection Value 1]):	1.2.840.10008.1.2.4.70	SCP	None
		JPEG 2000 Image Compression (Lossless Only)	1.2.840.10008.1.2.4.90	SCP	None
		JPEG 2000 Image Compression	1.2.840.10008.1.2.4.91	SCP	None
Philips Private CX Image Storage	1.3.46.670589.2.4.1.1	Implicit VR Little Endian Transfer Syntax	1.2.840.10008.1.2	SCP	None
		Explicit VR Little Endian Transfer Syntax	1.2.840.10008.1.2.1	SCP	None
		Explicit VR Big Endian Transfer Syntax	1.2.840.10008.1.2.2	SCP	None
		RLE Transfer Syntax	1.2.840.10008.1.2.5	SCP	None
		JPEG Baseline Coding Process 1 Transfer Syntax	1.2.840.10008.1.2.4.50	SCP	None
		JPEG Extended (Process 2 & 4)	1.2.840.10008.1.2.4.51	SCP	None
		JPEG Lossless, Non-Hierarchical (Process 14)	1.2.840.10008.1.2.4.57	SCP	None
		JPEG Lossless, Non-Hierarchical, (Process 14 [Selection Value 1]):	1.2.840.10008.1.2.4.70	SCP	None

Presentation Context Table					
		JPEG 2000 Image Compression (Lossless Only)	1.2.840.10008.1.2.4.90	SCP	None
		JPEG 2000 Image Compression	1.2.840.10008.1.2.4.91	SCP	None
Philips Private iE33 3D Object Storage	1.3.46.670589.2.5.1.1	Implicit VR Little Endian Transfer Syntax	1.2.840.10008.1.2	SCP	None
		Explicit VR Little Endian Transfer Syntax	1.2.840.10008.1.2.1	SCP	None
		Explicit VR Big Endian Transfer Syntax	1.2.840.10008.1.2.2	SCP	None
		RLE Transfer Syntax	1.2.840.10008.1.2.5	SCP	None
		JPEG Baseline Coding Process 1 Transfer Syntax	1.2.840.10008.1.2.4.50	SCP	None
		JPEG Extended (Process 2 & 4)	1.2.840.10008.1.2.4.51	SCP	None
		JPEG Lossless, Non-Hierarchical (Process 14)	1.2.840.10008.1.2.4.57	SCP	None
		JPEG Lossless, Non-Hierarchical, (Process 14 [Selection Value 1]):	1.2.840.10008.1.2.4.70	SCP	None
		JPEG 2000 Image Compression (Lossless Only)	1.2.840.10008.1.2.4.90	SCP	None
		JPEG 2000 Image Compression	1.2.840.10008.1.2.4.91	SCP	None
Philips Private Volume Storage	1.3.46.670589.5.0.1	Implicit VR Little Endian Transfer Syntax	1.2.840.10008.1.2	SCP	None
		Explicit VR Little Endian Transfer Syntax	1.2.840.10008.1.2.1	SCP	None

Presentation Context Table					
		Explicit VR Big Endian Transfer Syntax	1.2.840.10008.1.2.2	SCP	None
		RLE Transfer Syntax	1.2.840.10008.1.2.5	SCP	None
		JPEG Baseline Coding Process 1 Transfer Syntax	1.2.840.10008.1.2.4.50	SCP	None
		JPEG Extended (Process 2 & 4)	1.2.840.10008.1.2.4.51	SCP	None
		JPEG Lossless, Non-Hierarchical (Process 14)	1.2.840.10008.1.2.4.57	SCP	None
		JPEG Lossless, Non-Hierarchical, (Process 14 [Selection Value 1]):	1.2.840.10008.1.2.4.70	SCP	None
		JPEG 2000 Image Compression (Lossless Only)	1.2.840.10008.1.2.4.90	SCP	None
		JPEG 2000 Image Compression	1.2.840.10008.1.2.4.91	SCP	None
Philips Private Volume Image Reference	1.3.46.670589.5.0.1.1	Implicit VR Little Endian Transfer Syntax	1.2.840.10008.1.2	SCP	None
		Explicit VR Little Endian Transfer Syntax	1.2.840.10008.1.2.1	SCP	None
		Explicit VR Big Endian Transfer Syntax	1.2.840.10008.1.2.2	SCP	None
		RLE Transfer Syntax	1.2.840.10008.1.2.5	SCP	None
		JPEG Baseline Coding Process 1 Transfer Syntax	1.2.840.10008.1.2.4.50	SCP	None
		JPEG Extended (Process 2 & 4)	1.2.840.10008.1.2.4.51	SCP	None
		JPEG Lossless, Non-Hierarchical (Process 14)	1.2.840.10008.1.2.4.57	SCP	None

Presentation Context Table					
		JPEG Lossless, Non-Hierarchical, (Process 14 [Selection Value 1]):	1.2.840.10008.1.2.4.70	SCP	None
		JPEG 2000 Image Compression (Lossless Only)	1.2.840.10008.1.2.4.90	SCP	None
		JPEG 2000 Image Compression	1.2.840.10008.1.2.4.91	SCP	None
Philips Private 3D Object Storage	1.3.46.670589.5.0.2	Implicit VR Little Endian Transfer Syntax	1.2.840.10008.1.2	SCP	None
		Explicit VR Little Endian Transfer Syntax	1.2.840.10008.1.2.1	SCP	None
		Explicit VR Big Endian Transfer Syntax	1.2.840.10008.1.2.2	SCP	None
		RLE Transfer Syntax	1.2.840.10008.1.2.5	SCP	None
		JPEG Baseline Coding Process 1 Transfer Syntax	1.2.840.10008.1.2.4.50	SCP	None
		JPEG Extended (Process 2 & 4)	1.2.840.10008.1.2.4.51	SCP	None
		JPEG Lossless, Non-Hierarchical (Process 14)	1.2.840.10008.1.2.4.57	SCP	None
		JPEG Lossless, Non-Hierarchical, (Process 14 [Selection Value 1]):	1.2.840.10008.1.2.4.70	SCP	None
		JPEG 2000 Image Compression (Lossless Only)	1.2.840.10008.1.2.4.90	SCP	None
		JPEG 2000 Image Compression	1.2.840.10008.1.2.4.91	SCP	None
Philips Private 3D Object 2 Storage	1.3.46.670589.5.0.2.1	Implicit VR Little Endian Transfer Syntax	1.2.840.10008.1.2	SCP	None

Presentation Context Table					
		Explicit VR Little Endian Transfer Syntax	1.2.840.10008.1.2.1	SCP	None
		Explicit VR Big Endian Transfer Syntax	1.2.840.10008.1.2.2	SCP	None
		RLE Transfer Syntax	1.2.840.10008.1.2.5	SCP	None
		JPEG Baseline Coding Process 1 Transfer Syntax	1.2.840.10008.1.2.4.50	SCP	None
		JPEG Extended (Process 2 & 4)	1.2.840.10008.1.2.4.51	SCP	None
		JPEG Lossless, Non-Hierarchical (Process 14)	1.2.840.10008.1.2.4.57	SCP	None
		JPEG Lossless, Non-Hierarchical, (Process 14 [Selection Value 1]):	1.2.840.10008.1.2.4.70	SCP	None
		JPEG 2000 Image Compression (Lossless Only)	1.2.840.10008.1.2.4.90	SCP	None
		JPEG 2000 Image Compression	1.2.840.10008.1.2.4.91	SCP	None
Philips Private Surface Storage	1.3.46.670589.5.0.3	Implicit VR Little Endian Transfer Syntax	1.2.840.10008.1.2	SCP	None
		Explicit VR Little Endian Transfer Syntax	1.2.840.10008.1.2.1	SCP	None
		Explicit VR Big Endian Transfer Syntax	1.2.840.10008.1.2.2	SCP	None
		RLE Transfer Syntax	1.2.840.10008.1.2.5	SCP	None
		JPEG Baseline Coding Process 1 Transfer Syntax	1.2.840.10008.1.2.4.50	SCP	None
		JPEG Extended (Process 2 & 4)	1.2.840.10008.1.2.4.51	SCP	None

Presentation Context Table					
		JPEG Lossless, Non-Hierarchical (Process 14)	1.2.840.10008.1.2.4.57	SCP	None
		JPEG Lossless, Non-Hierarchical, (Process 14 [Selection Value 1]):	1.2.840.10008.1.2.4.70	SCP	None
		JPEG 2000 Image Compression (Lossless Only)	1.2.840.10008.1.2.4.90	SCP	None
		JPEG 2000 Image Compression	1.2.840.10008.1.2.4.91	SCP	None
Philips Private Surface 2 Storage	1.3.46.670589.5.0.3.1	Implicit VR Little Endian Transfer Syntax	1.2.840.10008.1.2	SCP	None
		Explicit VR Little Endian Transfer Syntax	1.2.840.10008.1.2.1	SCP	None
		Explicit VR Big Endian Transfer Syntax	1.2.840.10008.1.2.2	SCP	None
		RLE Transfer Syntax	1.2.840.10008.1.2.5	SCP	None
		JPEG Baseline Coding Process 1 Transfer Syntax	1.2.840.10008.1.2.4.50	SCP	None
		JPEG Extended (Process 2 & 4)	1.2.840.10008.1.2.4.51	SCP	None
		JPEG Lossless, Non-Hierarchical (Process 14)	1.2.840.10008.1.2.4.57	SCP	None
		JPEG Lossless, Non-Hierarchical, (Process 14 [Selection Value 1]):	1.2.840.10008.1.2.4.70	SCP	None
		JPEG 2000 Image Compression (Lossless Only)	1.2.840.10008.1.2.4.90	SCP	None

Presentation Context Table					
		JPEG 2000 Image Compression	1.2.840.10008.1.2.4.91	SCP	None
Philips Private Composite Object Storage	1.3.46.670589.5.0.4	Implicit VR Little Endian Transfer Syntax	1.2.840.10008.1.2	SCP	None
		Explicit VR Little Endian Transfer Syntax	1.2.840.10008.1.2.1	SCP	None
		Explicit VR Big Endian Transfer Syntax	1.2.840.10008.1.2.2	SCP	None
		RLE Transfer Syntax	1.2.840.10008.1.2.5	SCP	None
		JPEG Baseline Coding Process 1 Transfer Syntax	1.2.840.10008.1.2.4.50	SCP	None
		JPEG Extended (Process 2 & 4)	1.2.840.10008.1.2.4.51	SCP	None
		JPEG Lossless, Non-Hierarchical (Process 14)	1.2.840.10008.1.2.4.57	SCP	None
		JPEG Lossless, Non-Hierarchical, (Process 14 [Selection Value 1]):	1.2.840.10008.1.2.4.70	SCP	None
		JPEG 2000 Image Compression (Lossless Only)	1.2.840.10008.1.2.4.90	SCP	None
		JPEG 2000 Image Compression	1.2.840.10008.1.2.4.91	SCP	None
Philips Private MR Cardio Profile	1.3.46.670589.5.0.7	Implicit VR Little Endian Transfer Syntax	1.2.840.10008.1.2	SCP	None
		Explicit VR Little Endian Transfer Syntax	1.2.840.10008.1.2.1	SCP	None
		Explicit VR Big Endian Transfer Syntax	1.2.840.10008.1.2.2	SCP	None
		RLE Transfer Syntax	1.2.840.10008.1.2.5	SCP	None

Presentation Context Table					
		JPEG Baseline Coding Process 1 Transfer Syntax	1.2.840.10008.1.2.4.50	SCP	None
		JPEG Extended (Process 2 & 4)	1.2.840.10008.1.2.4.51	SCP	None
		JPEG Lossless, Non-Hierarchical (Process 14)	1.2.840.10008.1.2.4.57	SCP	None
		JPEG Lossless, Non-Hierarchical, (Process 14 [Selection Value 1]):	1.2.840.10008.1.2.4.70	SCP	None
		JPEG 2000 Image Compression (Lossless Only)	1.2.840.10008.1.2.4.90	SCP	None
		JPEG 2000 Image Compression	1.2.840.10008.1.2.4.91	SCP	None
Philips Private MR Cardio	1.3.46.670589.5.0.8	Implicit VR Little Endian Transfer Syntax	1.2.840.10008.1.2	SCP	None
		Explicit VR Little Endian Transfer Syntax	1.2.840.10008.1.2.1	SCP	None
		Explicit VR Big Endian Transfer Syntax	1.2.840.10008.1.2.2	SCP	None
		RLE Transfer Syntax	1.2.840.10008.1.2.5	SCP	None
		JPEG Baseline Coding Process 1 Transfer Syntax	1.2.840.10008.1.2.4.50	SCP	None
		JPEG Extended (Process 2 & 4)	1.2.840.10008.1.2.4.51	SCP	None
		JPEG Lossless, Non-Hierarchical (Process 14)	1.2.840.10008.1.2.4.57	SCP	None
		JPEG Lossless, Non-Hierarchical, (Process 14 [Selection Value 1]):	1.2.840.10008.1.2.4.70	SCP	None



Presentation Context Table					
		JPEG 2000 Image Compression (Lossless Only)	1.2.840.10008.1.2.4.90	SCP	None
		JPEG 2000 Image Compression	1.2.840.10008.1.2.4.91	SCP	None
Philips Private CT Synthetic Image Storage	1.3.46.670589.5.0.9	Implicit VR Little Endian Transfer Syntax	1.2.840.10008.1.2	SCP	None
		Explicit VR Little Endian Transfer Syntax	1.2.840.10008.1.2.1	SCP	None
		Explicit VR Big Endian Transfer Syntax	1.2.840.10008.1.2.2	SCP	None
		RLE Transfer Syntax	1.2.840.10008.1.2.5	SCP	None
		JPEG Baseline Coding Process 1 Transfer Syntax	1.2.840.10008.1.2.4.50	SCP	None
		JPEG Extended (Process 2 & 4)	1.2.840.10008.1.2.4.51	SCP	None
		JPEG Lossless, Non-Hierarchical (Process 14)	1.2.840.10008.1.2.4.57	SCP	None
		JPEG Lossless, Non-Hierarchical, (Process 14 [Selection Value 1]):	1.2.840.10008.1.2.4.70	SCP	None
		JPEG 2000 Image Compression (Lossless Only)	1.2.840.10008.1.2.4.90	SCP	None
		JPEG 2000 Image Compression	1.2.840.10008.1.2.4.91	SCP	None
Philips Private MR Synthetic Image Storage	1.3.46.670589.5.0.10	Implicit VR Little Endian Transfer Syntax	1.2.840.10008.1.2	SCP	None
		Explicit VR Little Endian Transfer Syntax	1.2.840.10008.1.2.1	SCP	None

Presentation Context Table					
		Explicit VR Big Endian Transfer Syntax	1.2.840.10008.1.2.2	SCP	None
Philips Private MR Cardio Analysis Storage	1.3.46.670589.5.0.11	Implicit VR Little Endian Transfer Syntax	1.2.840.10008.1.2	SCP	None
		Explicit VR Little Endian Transfer Syntax	1.2.840.10008.1.2.1	SCP	None
		Explicit VR Big Endian Transfer Syntax	1.2.840.10008.1.2.2	SCP	None
		RLE Transfer Syntax	1.2.840.10008.1.2.5	SCP	None
		JPEG Baseline Coding Process 1 Transfer Syntax	1.2.840.10008.1.2.4.50	SCP	None
		JPEG Extended (Process 2 & 4)	1.2.840.10008.1.2.4.51	SCP	None
		JPEG Lossless, Non-Hierarchical (Process 14)	1.2.840.10008.1.2.4.57	SCP	None
		JPEG Lossless, Non-Hierarchical, (Process 14 [Selection Value 1]):	1.2.840.10008.1.2.4.70	SCP	None
		JPEG 2000 Image Compression (Lossless Only)	1.2.840.10008.1.2.4.90	SCP	None
		JPEG 2000 Image Compression	1.2.840.10008.1.2.4.91	SCP	None
Philips Private MR Cardio Analysis Data	1.3.46.670589.5.0.11.1	Implicit VR Little Endian Transfer Syntax	1.2.840.10008.1.2	SCP	None
		Explicit VR Little Endian Transfer Syntax	1.2.840.10008.1.2.1	SCP	None
		Explicit VR Big Endian Transfer Syntax	1.2.840.10008.1.2.2	SCP	None
		RLE Transfer Syntax	1.2.840.10008.1.2.5	SCP	None

Presentation Context Table					
		JPEG Baseline Coding Process 1 Transfer Syntax	1.2.840.10008.1.2.4.50	SCP	None
		JPEG Extended (Process 2 & 4)	1.2.840.10008.1.2.4.51	SCP	None
		JPEG Lossless, Non-Hierarchical (Process 14)	1.2.840.10008.1.2.4.57	SCP	None
		JPEG Lossless, Non-Hierarchical, (Process 14 [Selection Value 1]):	1.2.840.10008.1.2.4.70	SCP	None
		JPEG 2000 Image Compression (Lossless Only)	1.2.840.10008.1.2.4.90	SCP	None
		JPEG 2000 Image Compression	1.2.840.10008.1.2.4.91	SCP	None
Philips Private CX Synthetic Image Storage	1.3.46.670589.5.0.12	Implicit VR Little Endian Transfer Syntax	1.2.840.10008.1.2	SCP	None
		Explicit VR Little Endian Transfer Syntax	1.2.840.10008.1.2.1	SCP	None
		Explicit VR Big Endian Transfer Syntax	1.2.840.10008.1.2.2	SCP	None
		RLE Transfer Syntax	1.2.840.10008.1.2.5	SCP	None
		JPEG Baseline Coding Process 1 Transfer Syntax	1.2.840.10008.1.2.4.50	SCP	None
		JPEG Extended (Process 2 & 4)	1.2.840.10008.1.2.4.51	SCP	None
		JPEG Lossless, Non-Hierarchical (Process 14)	1.2.840.10008.1.2.4.57	SCP	None
		JPEG Lossless, Non-Hierarchical, (Process 14 [Selection Value 1]):	1.2.840.10008.1.2.4.70	SCP	None

Presentation Context Table					
		JPEG 2000 Image Compression (Lossless Only)	1.2.840.10008.1.2.4.90	SCP	None
		JPEG 2000 Image Compression	1.2.840.10008.1.2.4.91	SCP	None
Philips Private Perfusion Image Reference	1.3.46.670589.5.0.13	Implicit VR Little Endian Transfer Syntax	1.2.840.10008.1.2	SCP	None
		Explicit VR Little Endian Transfer Syntax	1.2.840.10008.1.2.1	SCP	None
		Explicit VR Big Endian Transfer Syntax	1.2.840.10008.1.2.2	SCP	None
		RLE Transfer Syntax	1.2.840.10008.1.2.5	SCP	None
		JPEG Baseline Coding Process 1 Transfer Syntax	1.2.840.10008.1.2.4.50	SCP	None
		JPEG Extended (Process 2 & 4)	1.2.840.10008.1.2.4.51	SCP	None
		JPEG Lossless, Non-Hierarchical (Process 14)	1.2.840.10008.1.2.4.57	SCP	None
		JPEG Lossless, Non-Hierarchical, (Process 14 [Selection Value 1]):	1.2.840.10008.1.2.4.70	SCP	None
		JPEG 2000 Image Compression (Lossless Only)	1.2.840.10008.1.2.4.90	SCP	None
		JPEG 2000 Image Compression	1.2.840.10008.1.2.4.91	SCP	None
Philips Private Perfusion Analysis Data	1.3.46.670589.5.0.14	Implicit VR Little Endian Transfer Syntax	1.2.840.10008.1.2	SCP	None
		Explicit VR Little Endian Transfer Syntax	1.2.840.10008.1.2.1	SCP	None

Presentation Context Table					
		Explicit VR Big Endian Transfer Syntax	1.2.840.10008.1.2.2	SCP	None
		RLE Transfer Syntax	1.2.840.10008.1.2.5	SCP	None
		JPEG Baseline Coding Process 1 Transfer Syntax	1.2.840.10008.1.2.4.50	SCP	None
		JPEG Extended (Process 2 & 4)	1.2.840.10008.1.2.4.51	SCP	None
		JPEG Lossless, Non-Hierarchical (Process 14)	1.2.840.10008.1.2.4.57	SCP	None
		JPEG Lossless, Non-Hierarchical, (Process 14 [Selection Value 1]):	1.2.840.10008.1.2.4.70	SCP	None
		JPEG 2000 Image Compression (Lossless Only)	1.2.840.10008.1.2.4.90	SCP	None
		JPEG 2000 Image Compression	1.2.840.10008.1.2.4.91	SCP	None

The accepted presentation contexts for DICOM storage Server are the same as listed in Table 7.

**4.1.3.1.3 SOP Specific Conformance Statement for Storage SOP Classes**

The iSite DICOM Server conforms to the SOPs of the Storage Service Class listed in Table 7 at Level 2 (Full). No elements are discarded, but the following demographic elements may be modified.

**Table 9: DICOM Data Elements that may be modified by the iSite DICOM Server**

Name	(Group, Element)
Accession Number	(0x0008, 0x0050)
Referring Physician	(0x0008, 0x0090)
Procedure Sequence	(0x0008, 0x1032)
> Code Value	(0x0008, 0x0100)
> Code Meaning	(0x0008, 0x0104)
Patient Name	(0x0010, 0x0010)

Name	(Group, Element)
Patient ID	(0x0010, 0x0020)
Patient Birth Date	(0x0010, 0x0030)
Patient Sex	(0x0010, 0x0040)
Requesting Physician	(0x0032, 0x1032)

Modification of data elements is initiated either by processing of manual edits initiated by end users of the system or automatic edits initiated by information received from ADT and Order Entry systems (HIS/RIS).

Depending upon the system configuration, the iSite DICOM Server application either performs “lifetime” persistence for the Images received or manages an auto-deleted cache of the most recently active image studies. In the cache storage mode, images received will be deleted when the server disk space becomes full. Deletion will be performed based on a “least accessed patient” strategy. If an iSite client has accessed any part of a patient’s studies, all images associated with that patient have a lower probability of being deleted.

The iSite Server application entity returns the status code of “0” if the receipt of a C-STORE message was successful, otherwise it returns one of the following codes:

**Table 10: C-STORE Message Codes**

Code	Standard Meaning	Implementation Specific Meaning
0000	Success	Message was received successfully
A700	Out of Resources	There is insufficient storage in the server. Try again later.
A800	Illegal SOP Class	SOP class that was not negotiated was received.
A900	Data mismatch	Missing type 1 or type 2 data element was detected, or other incorrect encoding in the DICOM data stream.
C000	Cannot understand	Part of the data could not be parsed. This usually indicates a serious DICOM encoding error in the SCU implementation or data stream corruption.

**4.1.3.1.4 Presentation Context Acceptance Criterion**

The iSite DICOM Server will accept all presentation contexts that are combinations of supported SOP Classes and Transfer Syntaxes as presented in Table 7.

**4.1.3.1.5 Transfer Syntax Selection Policies**

The iSite DICOM Server will examine the Transfer Syntaxes for a given proposed Presentation Context in the order that they are presented in the Association Request. The first proposed Transfer Syntax that matches a support Transfer Syntax will be accepted for each supported proposed Presentation Context.

**4.1.3.2 Real World Activity – Remote System Requests High Priority Image Storage**

**4.1.3.2.1 Associated Real-World Activity**

The DICOM specific conformance related to this real world activity is identical to the DICOM conformance presented in Real World Activity – Remote System Requests Normal Priority Image Storage. Please refer to that section for DICOM conformance details.

Remote DICOM SCUs are able to request high priority processing of DICOM requests by negotiating their DICOM associations with the configurable high priority Application Entity Title of the iSite DICOM Server. High priority DICOM storage requests are processed ahead of other pending requests for normal priority storage.

**4.1.3.3 Real World Activity – Remote System Requests Modality Performed Procedure Step (MPPS)**

**4.1.3.3.1 Associated Real-World Activity**

The iSite DICOM Server will accept DICOM Modality Performed Procedure Step association request that are initiated by remote DICOM entities. The iSite DICOM Server will process the incoming MPPS messages and forward them to configured DICOM clients.

**4.1.3.3.2 Accepted Presentation Contexts**

**Table 11: Accepted Presentation Contexts for iSite DICOM Server and Real-World Activity – Remote System Request Modality Performed Procedure Step**

Presentation Context Table					
Abstract Syntax		Transfer Syntax		Role	Extended Negotiation
Name	UID	Name List	UID List		
Modality Performed Procedure Step	1.2.840.10008.3.1.2.3.3	Implicit VR Little Endian Transfer Syntax	1.2.840.10008.1.2	SCP	None
		Explicit VR Little Endian Transfer Syntax	1.2.840.10008.1.2.1	SCP	None
		Explicit VR Big Endian Transfer Syntax	1.2.840.10008.1.2.2	SCP	None

**4.1.3.3.3 Forwarding MPPS**

The MPPS messages are forwarded as received; certain forwarding information is stored in the message as private Tags.

**4.1.3.4 Presentation Context Acceptance Criterion**

The iSite DICOM Server will accept all presentation contexts that are combinations of supported SOP Classes and Transfer Syntaxes as presented in Table 11.

**4.1.3.5 Transfer Syntax Selection Policies**

The iSite DICOM Server will examine the Transfer Syntaxes for a given proposed Presentation Context in the order that they are presented in the Association Request. The first proposed Transfer Syntax that matches a support Transfer Syntax will be accepted for each supported proposed Presentation Context.

**4.1.3.6 Real World Activity – Remote System Requests Storage Commitment**

**4.1.3.6.1 Associated Real-World Activity**

The iSite DICOM Server will accept DICOM Storage Commitment association requests that are initiated by remote DICOM entities. The iSite DICOM Server will process the incoming requests and service them asynchronously if they are configured to do so and service synchronous responses otherwise.

**4.1.3.6.2 Accepted Presentation Contexts**

**Table 12: Accepted Presentation Contexts for iSite DICOM Server and Real-World Activity – Remote System Request Normal Priority Image Storage**

Presentation Context Table					
Abstract Syntax		Transfer Syntax		Role	Extended Negotiation
Name	UID	Name List	UID List		
Storage Commitment Push Model	1.2.840.10008.1.20.1	Implicit VR Little Endian Transfer Syntax	1.2.840.10008.1.2	SCP	None
		Explicit VR Little Endian Transfer Syntax	1.2.840.10008.1.2.1	SCP	None
		Explicit VR Big Endian Transfer Syntax	1.2.840.10008.1.2.2	SCP	None

**4.1.3.7 Presentation Context Acceptance Criterion**

The iSite DICOM Server will accept all presentation contexts that are combinations of supported SOP Classes and Transfer Syntaxes as presented in Table 12.

**4.1.3.8 Transfer Syntax Selection Policies**

The iSite DICOM Server will examine the Transfer Syntaxes for a given proposed Presentation Context in the order that they are presented in the Association Request. The first proposed Transfer Syntax that matches a support Transfer Syntax will be accepted for each supported proposed Presentation Context.



**4.1.3.9 Real World Activity – Remote System Requests DICOM Verification Service**

**4.1.3.9.1 Associated Real-World Activity**

The iSite DICOM Server will accept and process request for Verification Service that are initiated by remote DICOM entities.

**4.1.3.9.2 Accepted Presentation Contexts**

**Table 13: Accepted Presentation Contexts for iSite DICOM Server and Real-World Activity – Remote System Requests DICOM Verification Service**

Presentation Context Table					
Abstract Syntax		Transfer Syntax		Role	Extended Negotiation
Name	UID	Name List	UID List		
Verification	1.2.840.10008.1.1	Implicit VR Little Endian Transfer Syntax	1.2.840.10008.1.2	SCP	None

**4.1.3.10 Proposed Presentation Contexts Presentation Context Acceptance Criterion**

The iSite DICOM Server will only accept presentation contexts for the Verification Service that request the Verification SOP Class with Implicit VR Little Endian Transfer Syntax.

**4.1.3.11 Transfer Syntax Selection Policies**

The iSite DICOM Server will always select the Implicit VR Little Endian Transfer Syntax for proposed presentation contexts for the Verification Service.

**4.2 iSite DICOM QRSCP AE Specification**

**Table 14: QRSCP AE provides Standard conformance to the following DICOM V3.0 SOP Classes as a Query/Retrieve SCP.**

SOP Class UID	SOP Class Name
1.2.840.10008.5.1.4.1.2.1.1	Patient Root Query/Retrieve Information Model – Find*
1.2.840.10008.5.1.4.1.2.1.2	Patient Root Query/Retrieve Information Model – Move*
1.2.840.10008.5.1.4.1.2.2.1	Study Root Query/Retrieve Information Model – Find*
1.2.840.10008.5.1.4.1.2.2.2	Study Root Query/Retrieve Information Model – Move*
1.2.840.10008.5.1.4.1.2.3.1	Patient/Study Only Query/Retrieve Information Model - Find
1.2.840.10008.5.1.4.1.2.3.2	Patient/Study Only Query/Retrieve Information Model – Move

**4.2.1 Association Establishment Policies**

**4.2.1.1 General**

The QRSCP will listen for an association as an SCP for the Query/Retrieve SOP Class. The default maximum PDU size is 64512.

**4.2.1.2 Number of Associations**

The number of threads available to process associations is configurable, and defaults to five (5) threads. The number of simultaneous associations that can be serviced is unlimited, but performance will degrade proportionally to the number of simultaneous associations and the average activity per association. Higher performance can be achieved by increasing the number of processors, threads, and memory.

**4.2.1.3 Asynchronous Nature**

Multiple transactions on a single association are not supported.

**4.2.1.4 Implementation Identifying Information**

The iSite QRSCP uses the following implementation identifying information.

**Table 15: iSite QRSCP Implementation Identifying Information**

Implementation Class UID	2.16.840.1.114151.100.1.1
--------------------------	---------------------------

**4.2.2 Association Initiation by Real-World Activity**

The QRSCP does not initiate associations.

**4.2.3 Association acceptance policy**

QRSCP accepts associations for the Query/Retrieve Services.

**4.2.3.1 Real-world activity for Find and Move commands**

Associations are accepted for the Query/Retrieve service. An accepted association is only closed after an error or when the client closes the association.

**4.2.3.1.1 Associated Real-World Activity**

After an association has been accepted, the QRSCP will wait for messages appropriate for the Query/Retrieve Service. When valid messages are read from the association, they will be processed, and any required responses will be sent back on the association.

Table 16: Presentation Context

Presentation Context Table					
Abstract Syntax		Transfer Syntax		Role	Extended Negotiation
Name	UID	Name	UID		
Patient Root Query/Retrieve Information Model - Find	1.2.840.10008.5.1.4.1.2.1.1	Explicit VR Little Endian	1.2.840.10008.1.2.1	SCP	No
		Explicit VR Big Endian	1.2.840.10008.1.2.2		
		Implicit VR Little Endian	1.2.840.10008.1.2		
Patient Root Query/Retrieve Information Model - Move	1.2.840.10008.5.1.4.1.2.1.2	Explicit VR Little Endian	1.2.840.10008.1.2.1	SCP	No
		Explicit VR Big Endian	1.2.840.10008.1.2.2		
		Implicit VR Little Endian	1.2.840.10008.1.2		
Study Root Query/Retrieve Information Model - Find	1.2.840.10008.5.1.4.1.2.2.1	Explicit VR Little Endian	1.2.840.10008.1.2.1	SCP	No
		Explicit VR Big Endian	1.2.840.10008.1.2.2		
		Implicit VR Little Endian	1.2.840.10008.1.2		
Study Root Query/Retrieve Information Model - Move	1.2.840.10008.5.1.4.1.2.2.2	Explicit VR Little Endian	1.2.840.10008.1.2.1	SCP	No
		Explicit VR Big Endian	1.2.840.10008.1.2.2		
		Implicit VR Little Endian	1.2.840.10008.1.2		
Patient/Study Only Query/Retrieve Information Model – Find	1.2.840.10008.5.1.4.1.2.3.1	Explicit VR Little Endian	1.2.840.10008.1.2.1	SCP	No
		Explicit VR Big Endian	1.2.840.10008.1.2.2		
		Implicit VR Little Endian	1.2.840.10008.1.2		
Patient/Study Only Query/Retrieve Information Model – Move	1.2.840.10008.5.1.4.1.2.3.2	Explicit VR Little Endian	1.2.840.10008.1.2.1	SCP	No
		Explicit VR Big Endian	1.2.840.10008.1.2.2		
		Implicit VR Little Endian	1.2.840.10008.1.2		

**4.2.3.1.2 SOP Specific Conformance for Patient Root Query/Retrieve Information Model**

**4.2.3.2 C-FIND Conformance**

**Table 17: Optional keys are supported:**

Level	Tag	Description	Matching Support
PATIENT	(0010,0030)	Patient's Birth Date	Matching/Existence
	(0010,0040)	Patient's Sex	Matching/Existence
STUDY	(0008,0090)	Referring Physician	Matching/Existence
	(0008,0061)	Modalities in Study	Matching/Existence
	(0020,1206)	Num. Study Related Series	Existence
	(0020,1208)	Num. Series Related Instances	Existence

Retrieve AE Title attribute (0008,0054) is always returned in the Response Identifier.

**4.2.3.3 C-MOVE Conformance**

The QRSCP does not perform C-STORE operations; an internal protocol is used to trigger these operations on the iSite server AE. The supported Storage Service Class SOP Classes for C-MOVE are the same as those supported by the iSite server AE, and are covered in a separate conformance document.

C-MOVE pending response messages are sent by QRSCP at a configurable interval, and always indicate the number of remaining, successful, failed, or warning sub-operations.

**4.2.3.3.1 Presentation context acceptance criterion for Find and Move commands**

All presentation contexts listed in Table 16 will be accepted.

**4.2.3.3.2 Transfer syntax selection policies for Find and Move commands**

Proposed transfer syntaxes are selected in the following order:

1. Explicit VR Little Endian - 1.2.840.10008.1.2.1
2. Explicit VR Big Endian – 1.2.840.10008.1.2.2
3. Implicit VR Little Endian – 1.2.840.10008.1.2

**4.2.3.4 SOP Conformance Statement**

**4.2.3.4.1 SOP Specific Conformance for Study Root Query/Retrieve Information Model**

Complete behavior of the Patient Root SOP Classes is supported as an SCP. For a list of supported fields please consult the IHE technical specification. Only C-

FIND and C-MOVE related requests are handled, and the Priority Service parameter can be used.

**4.2.3.5 C-FIND Conformance**

**Table 18: Optional Keys Supported**

Level	Tag	Description	Matching Support
STUDY	(0010,0030)	Patient's Birth Date	Matching/Existence
	(0010,0040)	Patient's Sex	Matching/Existence
	(0008,0090)	Referring Physician	Matching/Existence
	(0008,0061)	Modalities in Study	Matching/Existence
	(0020,1206)	Num. Study Related Series	Existence
	(0020,1208)	Num. Series Related Instances	Existence

Relational queries are not supported.

Retrieve AE Title attribute (0008,0054) is always returned in the Response Identifier.

**4.2.3.6 C-MOVE Conformance**

The QRSCP does not perform C-STORE operations; an internal protocol is used to trigger these operations on the iSite server AE. The supported Storage Service Class SOP Classes for C-MOVE are the same as those supported by the iSite server AE, and are covered in a separate conformance document.

C-MOVE pending response messages are sent by QRSCP at a configurable interval, and always indicate the number of remaining, successful, failed, or warning sub-operations.

**4.2.3.6.1 Presentation context acceptance criterion for Find and Move commands**

All presentation contexts listed in Table 16 will be accepted.

**4.2.3.6.2 Transfer syntax selection policies for Find and Move commands**

Proposed transfer syntaxes are selected in the following order:

1. Explicit VR Little Endian - 1.2.840.10008.1.2.1
2. Explicit VR Big Endian – 1.2.840.10008.1.2.2
3. Implicit VR Little Endian – 1.2.840.10008.1.2

**4.2.3.7 SOP Conformance Statement**

**4.2.3.7.1 SOP Specific Conformance for Patient/Study Only Query/Retrieve Information Model**

Complete behavior of the Patient/Study Only SOP Classes is supported as an SCP. For a list of supported fields please consult the IHE technical specification.

Only C-FIND and C-MOVE related requests are handled, and the Priority Service parameter can be used.

**4.2.3.8 C-FIND Conformance**

**Table 19: Optional Keys Supported**

Level	Tag	Description	Matching Support
PATIENT	(0010,0030)	Patient's Birth Date	Matching/Existence
	(0010,0040)	Patient's Sex	Matching/Existence
STUDY	(0008,0090)	Referring Physician	Matching/Existence
	(0008,0061)	Modalities in Study	Matching/Existence
	(0020,1206)	Num. Study Related Series	Existence
	(0020,1208)	Num. Series Related Instances	Existence

Relational queries are not supported.

Retrieve AE Title attribute (0008,0054) is always returned in the Response Identifier.

**4.2.3.9 C-MOVE Conformance**

The QRSCP does not perform C-STORE operations; an internal protocol is used to trigger these operations on the iSite server AE. The supported Storage Service Class SOP Classes for C-MOVE are the same as those supported by the iSite server AE, and are covered in a separate conformance document.

C-MOVE pending response messages are sent by QRSCP at a configurable interval, and always indicate the number of remaining, successful, failed, or warning sub-operations.

**4.2.3.9.1 Presentation context acceptance criterion for Find and Move commands**

All presentation contexts listed in this document will be accepted.

**4.2.3.9.2 Transfer syntax selection policies for Find and Move commands**

Proposed transfer syntaxes are selected in the following order:

4. Explicit VR Little Endian - 1.2.840.10008.1.2.1
5. Explicit VR Big Endian – 1.2.840.10008.1.2.2
6. Implicit VR Little Endian – 1.2.840.10008.1.2

### 4.3 iSite Worklist Server AE Specification

The iSite Worklist Server AE provides standard conformance to the following DICOM V3.0 SOP class in the roles specified:

**Table 20: iSite Worklist Server AE Standard Conformance**

SOP Class Name	SOP Class UID	Role
Verification	1.2.840.10008.1.1	SCP
Modality Worklist	1.2.840.10008.5.1.4.31	SCP

#### 4.3.1 Association Establishment Policies

##### 4.3.1.1 General

The iSite Worklist Server supports the acceptance of DICOM associations for the DICOM Modality Worklist Service and the DICOM Verification Service. The iSite Worklist Server application supports a maximum PDU size of 30KB with a default of 16KB.

##### 4.3.1.2 Number of Associations

The iSite Worklist Server application has no configurable upper limit on the number of simultaneous associations that it will accept. The upper limit of accepted associations is limited by the hardware platform and overall system performance requirements.

##### 4.3.1.3 Asynchronous Nature

The iSite Worklist Server application does not support negotiation of multiple outstanding transactions.

##### 4.3.1.4 Implementation Identifying Information

The iSite Worklist Server uses the following implementation identifying information.

**Table 21: iSite Worklist Server Implementation Identifying Information**

Implementation Class UID	1.2.840.113745.1
Version Name	IDX_MrgCOM3_240

#### 4.3.2 Association Initiation by Real-World Activity

The iSite Worklist Server application entity does not initiate DICOM associations.

**4.3.3 Association Acceptance Policy**

**4.3.3.1 Real World Activity – Remote System Request DICOM Modality Worklist**

**4.3.3.1.1 Associated Real-World Activity**

A remote application entity will establish an association with the iSite Worklist Server entity in order to perform DICOM Modality Worklist operations. This activity is generally initiated by an end-user of the remote system interacting with some user interface to generate the requests.

**Table 22: Accepted Presentation Contexts for iSite Worklist Server and Real-World Activity – Remote System Request DICOM Modality Worklist**

Presentation Context Table					
Abstract Syntax		Transfer Syntax		Role	Extended Negotiation
Name	UID	Name List	UID List		
Modality Worklist	1.2.840.10008.5.1.4.31	Implicit VR Little Endian Transfer Syntax	1.2.840.10008.1.2	SCP	None
		Explicit VR Little Endian Transfer Syntax	1.2.840.10008.1.2.1	SCP	None
		Explicit VR Big Endian Transfer Syntax	1.2.840.10008.1.2.2	SCP	None

**4.3.3.2 SOP Conformance Statement**

**4.3.3.2.1 SOP Specific Conformance to Modality Worklist SOP Class**

The iSite Worklist Server (MWS) application entity conforms to the Modality Worklist SOP Class. Supported Matching and Return keys are listed in Table 23. *MWS* only supports required matching keys and return keys of Types 1, 1C, 2 and 2C. Some return keys of type 3 are also supported (see table below for the list of supported keys). It means that *MWS* will only accepts queries based on supported matching keys, any values provided in the return keys will be ignored which may potentially lead to larger sets of returned information.



**Table 23: Supported Matching and Return Keys**

Description / Module	Tag	Matching Key Type	Return Key Type	Remark / Matching Type
<b>SOP Common</b>				
Specific Character Set	(0008,0005)	O	1C	Note: This attribute is omitted from the return data sets because expanded or replacement character sets are not used.
<b>Scheduled Procedure Step</b>				
Scheduled Procedure Step Sequence	(0040,0100)	R	1	The Attributes of the Scheduled Procedure Step shall only be retrieved with Sequence Matching. The Scheduled Procedure Step Sequence shall contain only a single Item.
>Scheduled Station AE Title	(0040,0001)	R	1	The Scheduled station AE title shall be retrieved with Single Value Matching only.
>Scheduled Procedure Step Start Date	(0040,0002)	R	1	Scheduled Step Start Date shall be retrieved with Single Value Matching or Range Matching. See remark under Scheduled Procedure Step Start Time(0040,0003).
>Scheduled Procedure Step Start Time	(0040,0003)	R	1	Scheduled Step Start Time shall be retrieved with Single Value Matching or Range Matching. Scheduled Step Start Date and Scheduled Step Start Time are subject to Range Matching. If both keys are specified for Range Matching, e.g. the date range "July5\July 7" and the time range "10am\6pm" specifies the time period starting on July 5, 10am until July 7, 6pm.
>Modality	(0008,0060)	R	1	The Modality shall be retrieved with Single Value Matching.
>Scheduled Performing Physician's Name	(0040,0006)	R	2	Scheduled Performing Physician's Name shall be retrieved with Single Value Matching or Wild Card Matching.  Note: Though supported as a required key, using Scheduled Performing Physician Name with value other than "*" will cause returning no information. Imaging Suite does not schedule Performing Physicians for the exams.
>Scheduled Procedure Step Description	(0040,0007)	O	1C	Note: This return attribute is supported as Type 1. Its value always correspond to the value of Requested Procedure Description (0032,1060)
>Scheduled Station Name	(0040,0010)	O	2	
>Scheduled Procedure Step Location	(0040,0011)	O	2	Note: Supported, but will always be returned with zero length

Description / Module	Tag	Matching Key Type	Return Key Type	Remark / Matching Type
>Scheduled Action Item Code Sequence	(0040,0008)	O	1C	The Scheduled Action Item Code Sequence contains one or more Action Items.  Note: This return attribute is supported as Type 1 and contains a single Action Item. Values of its components will always be identical to corresponding values of the Requested Procedure Code Sequence (0032,1064).
>>Code Value	(0008,0100)	O	1C	Required if a Sequence Item is present.
>>Coding Scheme Designator	(0008,0102)	O	1C	Required if a Sequence Item is present.
>>Code Meaning	(0008,0104)	O	3	Note: This Value will always be identical to the one of the Scheduled Procedure Step description (0040,0007)
>Pre-Medication	(0040,0012)	O	2C	Required if Pre-Medication is to be applied to that Scheduled Procedure Step.
>Scheduled Procedure Step ID	(0040,0009)	O	1	Note: Value of this Attribute will always be equal to that of Requested Procedure ID (0040,1001)
>Requested Contrast Agent	(0032,1070)	O	2C	Required if Contrast Media is to be applied to that Scheduled Procedure Step.
>Scheduled Procedure Step Status	(0040,0020)	O	3	Note: Supported, but always returns value "SCHEDULED"
>All other Attributes from the Scheduled Procedure Step Module		O	3	Note: Not Supported
<b>Requested Procedure</b>				
Requested Procedure ID	(0040,1001)	O	1	Note: Value of this Attribute will always be equal to that of Accession Number (0008,0050)
Requested Procedure Description	(0032,1060)	O	1C	Note: This return attribute is supported as Type 1.
Requested Procedure Code Sequence	(0032,1064)	O	1C	Note: This return attribute is supported as Type 1 and contains a single Item
>Code Value	(0008,0100)	O	1C	Required if a Sequence Item is present.
>Coding Scheme Designator	(0008,0102)	O	1C	Required if a Sequence Item is present.
>Code Meaning	(0008,0104)	O	3	
Study Instance UID	(0020,000D)	O	1	

Description / Module	Tag	Matching Key Type	Return Key Type	Remark / Matching Type
Referenced Study Sequence	(0008,1110)	O	2	Note: Supported, but the Sequence will always be returned without Items in it
>Referenced SOP Class UID	(0008,1150)	O	1C	Required if a Sequence Item is present.
>Referenced SOP Instance UID	(0008,1155)	O	1C	Required if a Sequence Item is present.
Requested Procedure Priority	(0040,1003)	O	2	Note: Supported, but will always be returned with zero length
Patient Transport Arrangements	(0040,1004)	O	2	Note: Supported, but will always be returned with zero length
All other Attributes from the Requested Procedure Module		O	3	Note: Not Supported
<b>Imaging Service Request</b>				
Accession Number	(0008,0050)	O	2	Note: Supported and will always be returned with non-zero length
Requesting Physician	(0032,1032)	O	2	Note: Supported, but will always be returned with zero length
Referring Physician's Name	(0008,0090)	O	2	
All other Attributes from the Imaging Service Request Module		O	3	Note: Not Supported
<b>Visit Identification</b>				
Admission ID	(0038,0010)	O	2	Note: Supported, but will always be returned with zero length
All other Attributes from the Visit Identification Module		O	3	Note: Not Supported
<b>Visit Status</b>				
Current Patient Location	(0038,0300)	O	2	Note: Supported, but will always be returned with zero length
All other Attributes from the Visit Status Module		O	3	Note: Not Supported
<b>Visit Relationship</b>				
Referenced Patient Sequence	(0008,1120)	O	2	Note: Supported, but Sequence will always have no Items
>Referenced SOP Class UID	(0008,1150)	O	2	
>Referenced SOP Instance UID	(0008,1155)	O	2	

Description / Module	Tag	Matching Key Type	Return Key Type	Remark / Matching Type
All other Attributes from the Visit Relationship Module		O	3	Note: Not Supported
<b>Visit Admission</b>				
All Attributes from the Visit Admission Module		O	3	Note: Not Supported
<b>Patient Relationship</b>				
All Attributes from the Patient Relationship Module		O	3	Note: Not Supported
<b>Patient Identification</b>				
Patient's Name	(0010,0010)	R	1	Patient Name shall be retrieved with Single Value Matching or Wild Card Matching.
Patient ID	(0010,0020)	R	1	Patient ID shall be retrieved with Single Value Matching.
All other Attributes from the Patient Identification Module		O	3	Note: Not Supported
<b>Patient Demographic</b>				
Patients Birth Date	(0010,0030)	O	2	
Patient's Sex	(0010,0040)	O	2	
Patient's Weight	(0010,1030)	O	2	
Confidentiality constraint on patient data	(0040,3001)	O	2	Note: Supported, but will always be returned with zero length
All other Attributes from the Patient Demographic Module		O	3	Note: Not Supported
<b>Patient Medical</b>				
Patient State	(0038,0500)	O	2	Note: Supported, but will always be returned with zero length
Pregnancy Status	(0010,21C0)	O	2	Note: Supported, but will always be returned with zero length
Medical Alerts	(0010,2000)	O	2	Note: Supported, but will always be returned with zero length
Contrast Allergies	(0010,2110)	O	2	Note: Supported, but will always be returned with zero length
Special Needs	(0038,0050)	O	2	Note: Supported, but will always be returned with zero length
All other Attributes from the Patient Medical Module		O	3	Note: Not Supported

If the database query was unsuccessful, *MWS* responds to the modality with C-FIND-RSP message conveying failure status of the operation (Status Attribute (0000,0900) with value 0xC001). It will also return Success and Pending status codes while returning information to the modality (see Table 24).

**Table 24: MWS Return Status Codes**

Service Status	Further Meaning	Status Codes	Related Fields
Failed	Unable to process	C001	(0000,0901) (0000,0902)
Cancel	Matching terminated due to Cancel request	FE00	None
Success	Matching is complete - No final Identifier is supplied.	0000	None
Pending	Matches are continuing - Current Match is supplied and any Optional Keys were supported in the same manner as Required Keys.	FF00	Identifier
Pending	Matches are continuing - Warning that one or more Optional Keys were not supported for existence for this Identifier.	FF01	Identifier

**4.3.3.3 Presentation Context Acceptance Criterion**

The Presentation Contexts that may be accepted by the iSite Worklist Server are specified in Table 22. Proposed Presentation Contexts will be considered in the order proposed by SCU. The first acceptable Presentation Context with Abstract Syntax other than Verification determines the Abstract Syntax that will be used for the association. Later proposed Presentation Contexts may be accepted if they have the same Abstract Syntax and allow a different Transfer Syntax.

**4.3.3.3.1 Transfer Syntax Selection Policies**

The iSite Worklist Server application entity prefers to process modality worklist transactions encoded using Explicit Little Endian syntax. If offered a choice of Transfer Syntaxes in a Presentation Context, it will apply the following priority to the choice of Transfer Syntax:

7. Explicit VR Little Endian Syntax
8. Explicit VR Big Endian Syntax
9. Implicit VR Little Endian Syntax

**4.3.3.4 Real World Activity – Remote System Requests DICOM Verification Service**

**4.3.3.4.1 Associated Real-World Activity**

The iSite DICOM Server will accept and process request for Verification Service that are initiated by remote DICOM entities.

**4.3.3.4.2 Accepted Presentation Contexts**

**Table 25: Accepted Presentation Contexts for iSite Worklist Server and Real-World Activity – Remote System Requests DICOM Verification Service**

Presentation Context Table					
Abstract Syntax		Transfer Syntax		Role	Extended Negotiation
Name	UID	Name List	UID List		
Verification	1.2.840.10008.1.1	Implicit VR Little Endian Transfer Syntax	1.2.840.10008.1.2	SCP	None

**4.3.3.4.3 Presentation Context Acceptance Criterion**

The iSite DICOM Server will only accept presentation contexts for the Verification Service that request the Verification SOP Class with Implicit VR Little Endian Transfer Syntax.

**4.3.3.4.4 Transfer Syntax Selection Policies**

The iSite DICOM Server will always select the Implicit VR Little Endian Transfer Syntax for proposed presentation contexts for the Verification Service.

**4.4 iSite Radiology Client AE Specification**

The iSite Radiology Client AE provides standard conformance to the following DICOM V3.0 SOP class in the roles specified:

**Table 26: iSite Radiology Client AE Standard Conformance**

SOP Class Name	SOP Class UID	Role
Verification	1.2.840.10008.1.1	SCU
Basic Grayscale Print Management	1.2.840.10008.5.1.1.9	SCU

**4.4.1 Association Establishment Policies**

**4.4.1.1 General**

The Radiology Client will initiate DICOM associations for the DICOM Basic Printing Service and the DICOM Verification Service. The iSite Radiology Client application supports a maximum PDU size of 28K.

**4.4.1.2 Number of Associations**

The iSite Radiology Client application only initiates a single associated at a time for the DICOM Basic Printing Service.

**4.4.1.3 Asynchronous Nature**

The iSite Radiology Client application does not request multiple outstanding transactions.

**4.4.1.4 Implementation Identifying Information**

The iSite Radiology Client uses the following implementation identifying information.

**Table 27: iSite Radiology Client Implementation Identifying Information**

Implementation Class UID	2.16.840.1.114151.100.1.1
--------------------------	---------------------------

**4.4.2 Association Initiation by Real-World Activity**

**4.4.2.1 Real World Activity – User Requests DICOM Image Printing**

**4.4.2.1.1 Associated Real-World Activity**

The iSite Radiology Client application entity will establish and manage associations with remote DICOM entities to service user requests for DICOM Image Printing. User requests for DICOM Image Printing are initiated by user interaction with the application interface.

**4.4.2.1.2 Proposed Presentation Contexts**

**Table 28: Proposed Presentation Contexts for iSite Radiology Client and Real-World Activity – User Requests DICOM Image Printing**

Presentation Context Table					
Abstract Syntax		Transfer Syntax		Role	Extended Negotiation
Name	UID	Name List	UID List		
Verification	1.2.840.10008.1.1	Implicit VR Little Endian Transfer Syntax	1.2.840.10008.1.2	SCU	None
Basic Grayscale Print Management	1.2.840.10008.5.1.1.9	Implicit VR Little Endian Transfer Syntax	1.2.840.10008.1.2	SCU	None

**4.4.2.1.3 SOP Specific Conformance – Basic Grayscale Print Management Meta SOP Class**

**Table 29: Basic Film Session (UID: 1.2.840.10008.5.1.1.1)**

Attribute Name	Tag	Supported Values
Number of Copies	(2000,0010)	Integer String
Print Priority	(2000,0020)	LOW
Medium Type	(2000,0030)	PAPER, CLEAR FILM, BLUE FILM

**Table 30: Basic Film Box (UID: 1.2.840.10008.5.1.1.4)**

Attribute Name	Tag	Supported Values
Image Display Format	(2010,0010)	STANDARD, ROW, COL
Film Orientation	(2010,0040)	PORTRAIT, LANDSCAPE
Film Size ID	(2010,0050)	8INX10IN, 8_5INX11IN, 10INX12IN, 10INX14IN, 11INX14IN, 11INX17IN, 14INX14IN, 14INX17IN, 24CMX24CM, 24CMX30CM, A4, A3
Magnification Type	(2010,0060)	REPLICATE, BILINEAR, CUBIC, NONE
Smoothing Type	(2010,0080)	Code String
Border Density	(2010,0100)	BLACK, WHITE, i where i represents the desired density in hundreds of OD
Empty Image Density	(2010,0110)	BLACK, WHITE, i where i represents the desired density in hundreds of OD
Min Density	(2010,0120)	Unsigned Short
Max Density	(2010,0130)	Unsigned Short
Trim	(2010,0140)	YES, NO
Configuration Information	(2010,0150)	Short Text
Illumination	(2010,015E)	Unsigned Short
Reflected Ambient Light	(2010,0160)	Unsigned Short
Requested Resolution ID	(2020,0050)	STANDARD, HIGH

**Table 31: Basic Image Box (UID: 1.2.840.10008.5.1.1.4)**

Attribute Name	Tag	Supported Values
Image Position	(2020,0010)	Unsigned Short
Polarity	(2020,0020)	NORMAL, REVERSE
Magnification Type	(2010,0060)	REPLICATE, BILINEAR, CUBIC, NONE
Smoothing Type	(2010,0080)	Code String
Configuration Information	(2010,0150)	Short Text
Requested Image Size	(2020,0030)	Decimal String



Attribute Name	Tag	Supported Values
Requested Decimate/Crop Behavior	(2020,0040)	DECIMATE, CROP, FAIL
Basic Grayscale Image Sequence	(2020,0110)	Sequence of Items
>Samples Per Pixel	(0028,0002)	1
>Photometric Interpretation	(0028,0004)	MONOCHROME2
>Rows	(0028,0010)	Unsigned Short
>Columns	(0028,0011)	Unsigned Short
>Pixel Aspect Ratio	(0028,0034)	Integer String
>Bits Allocated	(0028,0100)	8
>Bits Stored	(0028,0101)	8
>High Bit	(0028,0102)	7
>Pixel Representation	(0028,0103)	0000H
>Pixel Data	(7FE0,0010)	Other Byte String

#### 4.4.3 Association Acceptance Policy

The iSite Radiology Client application does not accept DICOM associated requests.

## 5 Communication Profiles

### 5.1 Supported Communication Stacks (Parts 8,9)

#### 5.1.1 TCP/IP Stack

The Philips iSite server provides only DICOM V3.0 TCP/IP Network Communication Support as defined in PS 3.8 of the standard.

#### 5.1.2 API

The Philips iSite server inherits its TCP/IP stack from Microsoft Windows2000Server operating system (Winsock 2).

### 5.2 Physical Media Support

While there are no theoretical differences in the choice of the physical media for TCP/IP networking, the Philips iSite server platform has been quality assurance tested to work with 10 and 100 Base-T Ethernet media. Therefore, Philips recommends the use of these media as the primary point of delivering the network traffic to the server platform.

## **6 Extensions/Specializations/Privatizations**

---

### **6.1 Standard Extended/Specialized/Private SOPs**

None

### **6.2 Private Transfer Syntaxes**

None

## **7 Configuration**

---

Only an authorized Philips technical support representative will configure the DICOM features.

## **8 Support of Extended Character Sets**

---

None

## **9 Codes and Controlled Terminology**

---

None

## **10 Security Profiles**

---

None