



**PHILIPS**

dStream Wrist 8ch

MR coils

# High resolution wrist imaging

dS Wrist 8ch coil for 1.5T and 3.0T systems with dStream

## Key benefits

- Designed for high resolution visualization of interosseous ligaments
- One-piece hinged design for easy patient setup
- Comfortable positioning at the patient's side

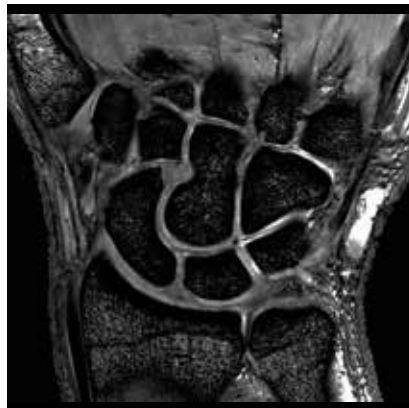
A coil that closely fits the left or right wrist for high signal-to-noise ratio (SNR). This design provides the high SNR needed to acquire images with a small field of view (FOV). It has a one piece, ovoid, hinged design for easy patient set up. High quality imaging can be obtained with the coil at the patient's side. The coil attaches to a rigid base plate for fixation to reduce patient motion.

# dStream Wrist 8ch coil

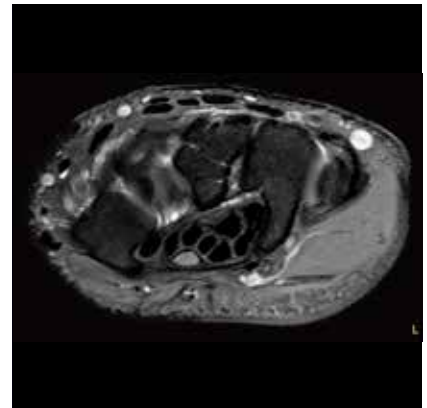
Coverage	8 cm
Maximum number of channels	8
Main applications	Wrist
Coil solution type	Dedicated
Data sampling	dStream digital broadband
Coil connection	dStream Interface
SENSE parallel imaging	dS SENSE enhanced parallel imaging performance



**Coronal PDw TSE**  
Resolution: 0.2 x 0.3 x 1.9 mm  
Scan time: 4:52 min  
Ingenia 3.0T  
Courtesy: Q-scan Radiology Clinics,  
Southport, Australia



**Coronal 3D T1w FFE**  
Resolution: 0.2 x 0.2 x 1.5 mm  
Scan time: 4:00 min  
Ingenia 3.0T  
Courtesy: Q-scan Radiology Clinics,  
Southport, Australia



**Axial PDw SPAIR**  
Resolution: 0.3 x 0.3 x 2.4 mm  
Scan time: 4:57 min  
Ingenia 3.0T  
Courtesy: Q-scan Radiology Clinics,  
Southport, Australia

