



PHILIPS

dStream Small
Extremity 8ch

MR coils

Flexibility for high resolution

dS Small Extremity 8ch coil for 1.5T and 3.0T systems with dStream

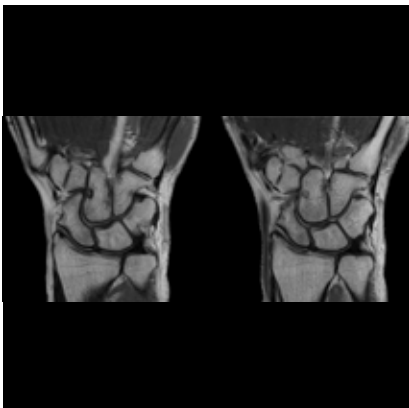
Key benefits

- Flexible wrap-around design to accommodate various patient sizes
- Close fit to the anatomy enabling high resolution imaging of cartilage and bone
- Positioning pads to promote patient comfort and immobilization

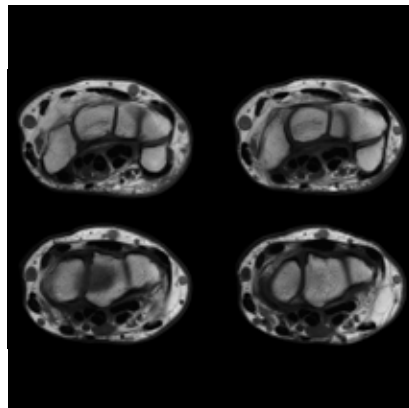
A semi-flexible coil designed for imaging of elbows, wrists, and hands. The coil has an inner diameter of 20 cm to match the size of the small extremities. It has a flexible wrap-around design for easy positioning and a good fit. A mattress that supports both patient and coil is provided to promote patient comfort and reduce motion.

dStream Small Extremity 8ch

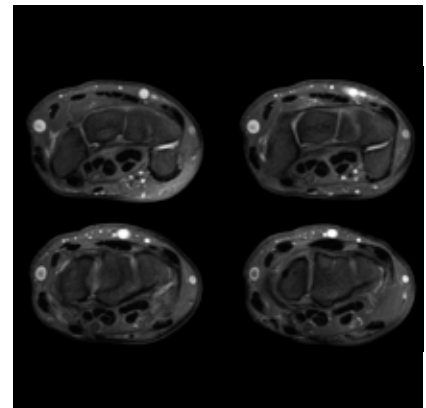
Coverage	20 cm
Maximum number of channels	8
Main applications	Elbow Wrist Hand
Coil solution type	Dedicated
Data sampling	dStream digital broadband
Coil connection	dStream Interface
SENSE parallel imaging	dS SENSE enhanced parallel imaging performance



Coronal PDw TSE
Resolution: 0.2 x 0.3 x 2.0 mm
Scan time: 3:30 min
Achieva dStream 1.5T



Axial T1w TSE
Resolution: 0.3 x 0.4 x 3.0 mm
Scan time: 2:31 min
Achieva dStream 1.5T



Axial PDw SPAIR
Resolution: 0.3 x 0.4 x 3.0 mm
Scan time: 3:30 min
Achieva dStream 1.5T

