



PHILIPS

dStream Shoulder 8ch

MR coils

Speed, coverage **and high resolution**

dS Shoulder 8ch coil for 1.5T and 3.0T systems with dStream

Key benefits

- Digitization in the coil for increased SNR

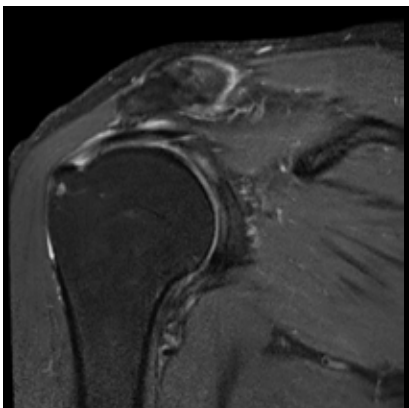
- Adjustable design promotes a comfortable fit for either left or right shoulder

- High signal uniformity with excellent penetration into labrum

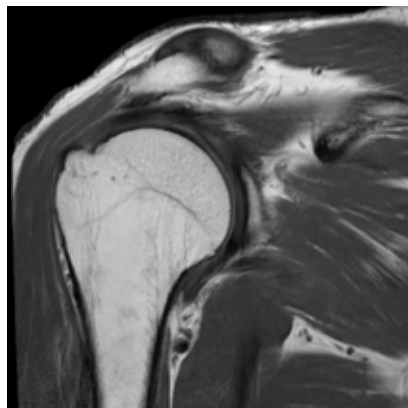
A coil designed for high signal uniformity throughout the shoulder joint, with excellent penetration into the labrum. The coil consists of a base plate and an adjustable shoulder cup which can be raised and pivoted for comfortable positioning. The dS Shoulder 8ch coil features dStream digital broadband data sampling in the coil. Digital transmission without losses in the RF chain provides enhanced SNR and dS SENSE enhanced parallel imaging performance.

dStream Shoulder 8ch coil

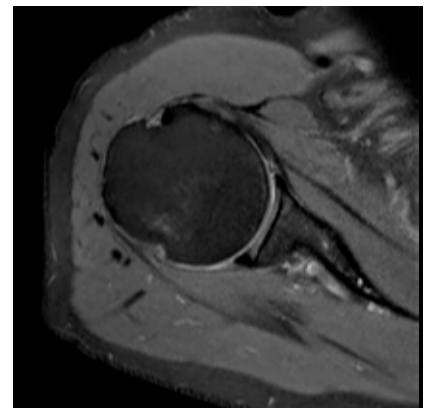
Coverage	12 cm LR
Maximum number of channels	8
Main applications	Shoulder
Coil solution type	Dedicated
Data sampling	dStream digital broadband
Coil connection	dStream Interface
SENSE parallel imaging	dS SENSE enhanced parallel imaging performance



Coronal T2w SPAIR
Resolution: 0.3 x 0.5 x 3.0 mm
Scan time: 3:42 min
Ingenia 3.0T



Coronal PDw aTSE
Resolution: 0.3 x 0.3 x 3.0 mm
Scan time: 3:43 min
Ingenia 3.0T



Axial PDw SPAIR
Resolution: 0.4 x 0.8 x 3.3 mm
Scan time: 1:37 min
Ingenia 3.0T

