



Accelerate preclinical discovery

MOSAIC HP Preclinical PET system

PHILIPS

New performance to speed your



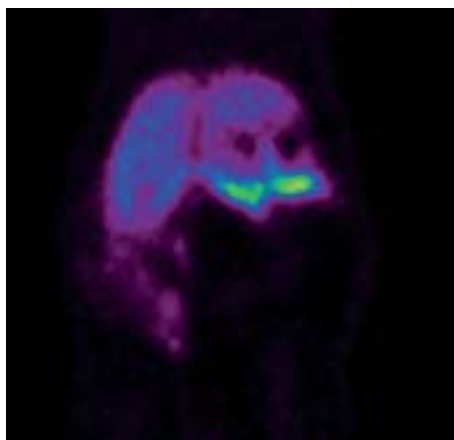
Equipped with new LYSO detector technology, MOSAIC HP is a dedicated preclinical PET system for small-animal imaging that delivers higher performance, flexibility, and efficiency for a wide range of preclinical research applications in oncology, cardiology, and neurology.

With its extra-large imaging bore and long axial field of view, MOSAIC HP offers excellent flexibility to image a variety of research subjects (mice, rats, rabbits), as well as the capability to perform bio-distribution studies on a whole subject in a single scan. MOSAIC HP can help detect and monitor the growth and therapeutic response of small tumors in animal models. It also enables accurate quantification of tumor uptake.

New image analysis, visualization, and quantification tools are part of the Philips Preclinical Workspace, designed to further streamline your preclinical research workflow.

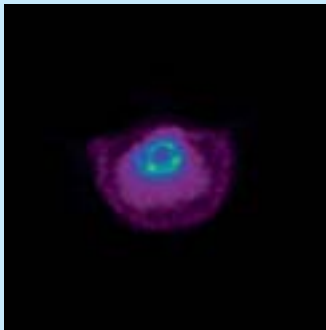
A unique subject handling system compatible with the NanoSPECT/CT® system provides hybrid imaging capability without compromising productivity.

Simplicity is accelerating discovery through streamlining preclinical workflow.

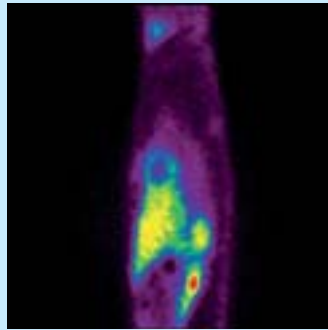


SNM 2007 Small Animal Image of the Year
Pancreatic beta cells in rats

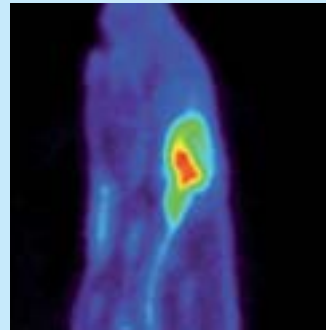
preclinical research



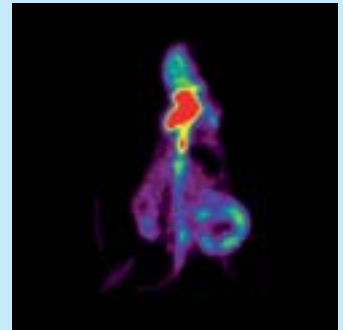
Cardiology
(N-13 Ammonia)



Cardiology
(N-13 Ammonia)



Neurology
(C-11 Raclopride)



Oncology
(F-18 FDG)

Experience superb performance

- Offers accurate quantification with high-performance LYSO detector
- Provides attenuation and scatter correction
- Supports dynamic list mode and gated acquisitions
- Enables optimum uptime and efficiency through remote diagnostic and service capabilities

Enjoy excellent flexibility

- Features large bore size and axial field of view for high-throughput imaging of rodents and medium-size animals, including monkey heads
- Enables hybrid imaging with an animal handling system that is interchangeable with the NanoSPECT/CT system

Efficiently analyze data

- Streamlines processing and data analysis with workflow-based Preclinical Workspace
- Offers comprehensive preclinical processing tools including advanced image co-registration, segmentation, and quantification tools
- Accommodates your current and future preclinical imaging needs through an expandable processing platform

Images courtesy of the University of Pennsylvania School of Medicine
SNM Small Animal Image of the Year 2007: Dr. Hank Kung, Ph.D., Department of Radiology
Cardiology: Dr. Rong Zhou, Ph.D., Department of Radiology
Neurology: Dr. Hank Kung, Ph.D., Department of Radiology
Oncology: Dr. Lewis Chodosh, Ph.D., Department of Cancer Biology

Note: NanoSPECT/CT is available through a distribution agreement with Bioscan Inc.

**Philips Medical Systems is part of
Royal Philips Electronics**

Interested?

Would you like to know more about our imaginative products? Please do not hesitate to contact us. We would be glad to hear from you.

On the web

www.medical.philips.com

Via email

medical@philips.com

By fax

+31 40 27 64 887

By mail

Philips Medical Systems
Global Information Center
P.O. Box 1168
5602 BD Eindhoven
The Netherlands

By phone

Asia

Tel: +852 2821 5888

Europe, Middle East, Africa

Tel: +49 7031 463 2254

Latin America

Tel: +55 11 2125 0764

North America

Tel: +1 800 299 6417



© 2007 Koninklijke Philips Electronics N.V.
All rights are reserved.

Philips Medical Systems Nederland B.V. reserves the right to make changes in specifications and/or to discontinue any product at any time without notice or obligation and will not be liable for any consequences resulting from the use of this publication.

Printed in The Netherlands.
4522 962 26641/882 * SEP 2007