




<b>Product name</b>	<b>RF Amplifier, 15 KW, 64 Mhz</b>
Identification code(s)	4522 131 4582x
Total weight [kg]	270 kg
<b>Manufacturer</b>	<b>Philips Medical Systems Nederland B.V.</b>
Address	Veenpluis 4-6 Best
Zip code	5680DA
Country	The Netherlands
Electronic info	RFamplifierS23_452213145820_579_v01.doc

### Recycling information

Special Attention	Items	Location
	None	NA

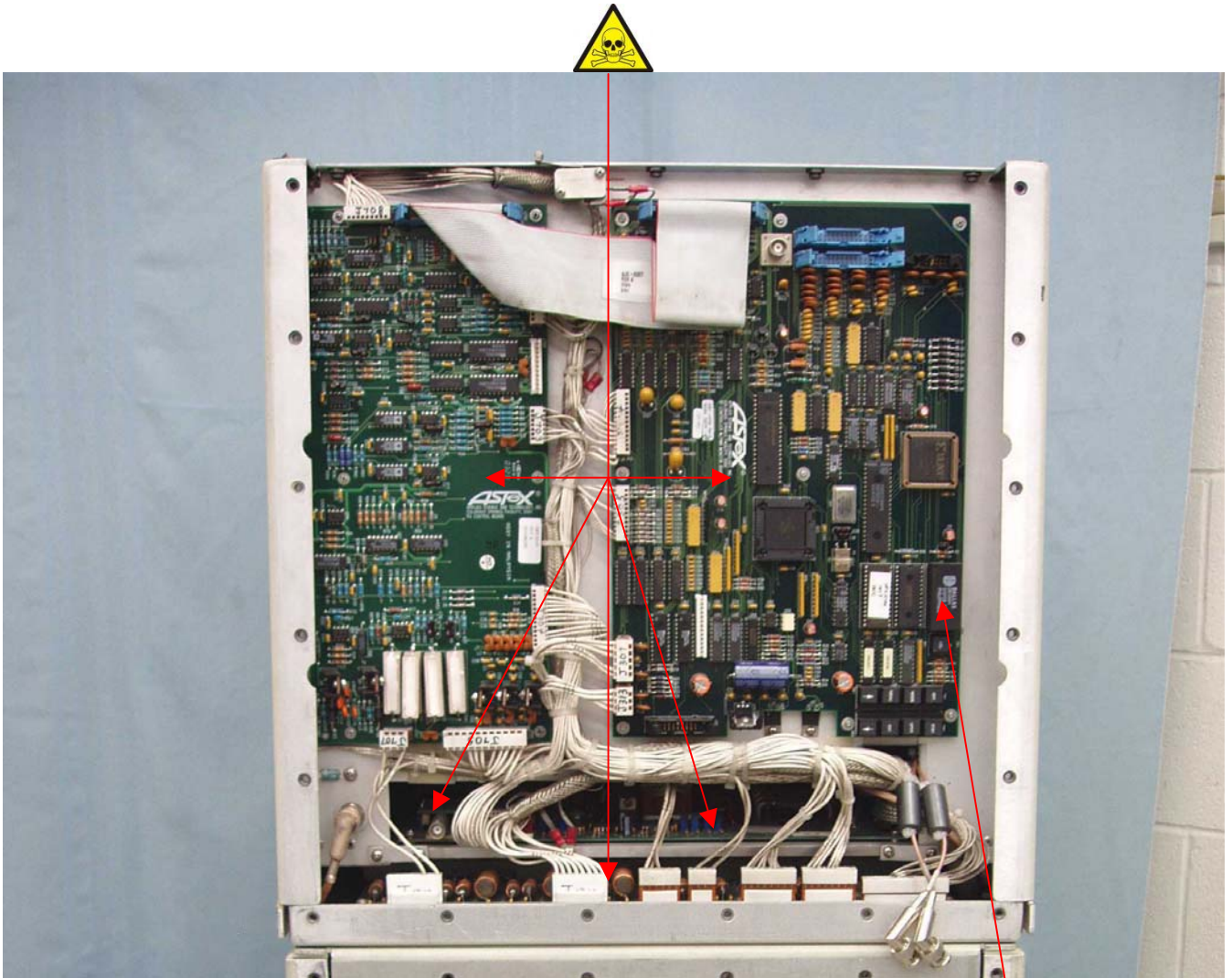
Batteries	Items, type	Location
	Lithium Ion Energy Cell – Dallas Semiconductor 1244Y	Figure 1

Hazardous substances	Items	Location
	RF Deck Printed Circuit Boards Containing Tin / Lead Solder	Figure(s) 1,2,3,4
	Power Supply Printed Circuit Boards Containing Tin / Lead Solder	Figure 5
	Beryllium Copper Gaskets	Figure(s) 2,3

Fluids and gases	Items	Location
	Capacitors Containing Approximately 160 Milliliters Of Mineral Oil	Figure 5

Name: <b>RF Amplifier, 15 KW, 64 Mhz</b>		12NC: <b>4522 131 4582x</b>		Version: <b>00</b>	
Author: <b>Michael Loucks</b>		Page <b>1</b> of <b>6</b>		Doc.Date: <b>2006-08-03</b>	
		Group No: <b>5790</b>		Section: <b>-</b>	
				Status: <b>Auth</b>	

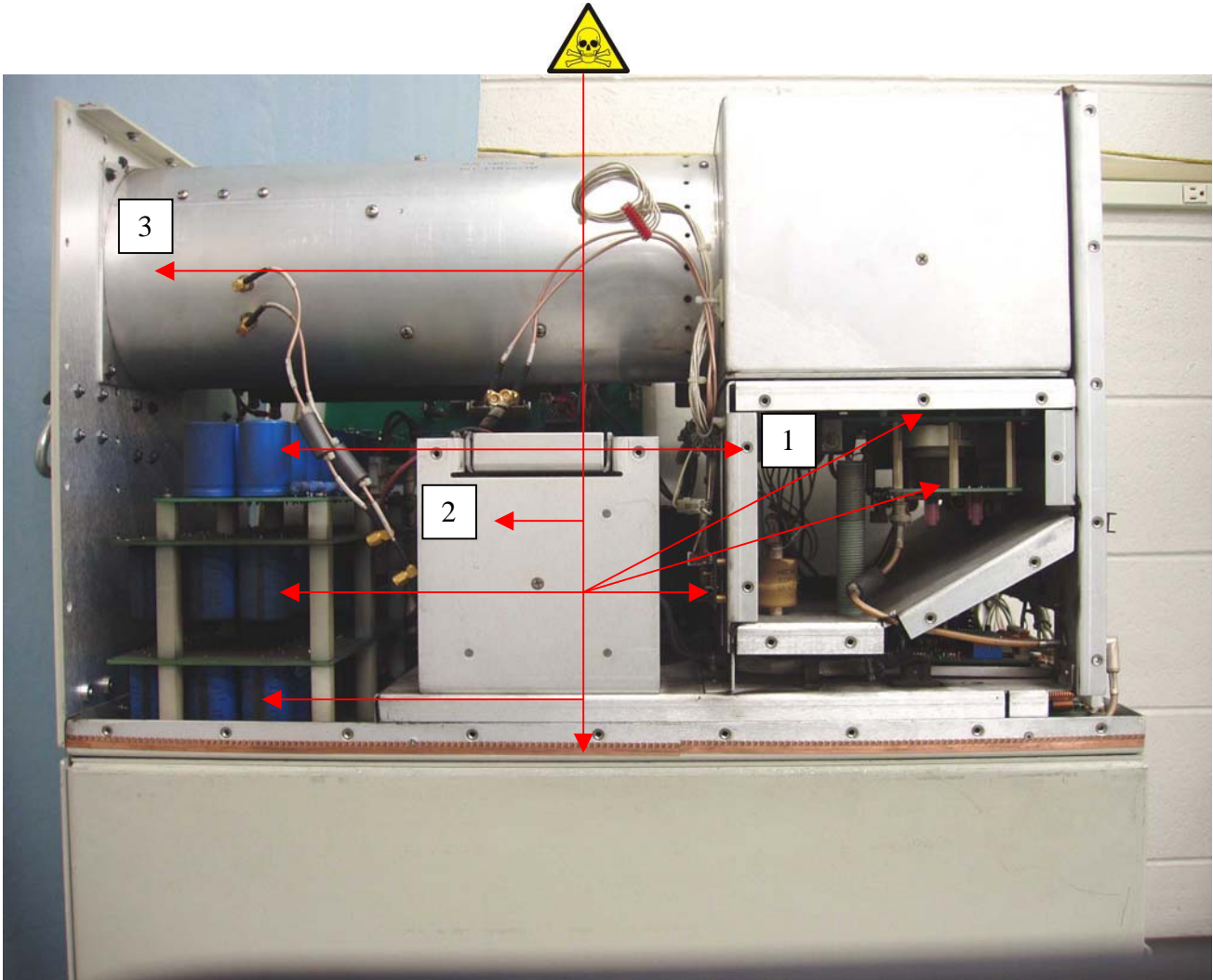
Locations as mentioned in the Passport (Information in pictures)



**Figure 1**  
**RF Deck – Front View (Power Supply Below Not Show)**



Name: <b>RF Amplifier, 15 KW, 64 Mhz</b>		12NC: <b>4522 131 4582x</b>	Version: <b>00</b> Doc.Date: <b>2006-08-03</b>
Author: <b>Michael Loucks</b>	Page <b>2</b> of <b>6</b>	Group No: <b>5790</b>	Section: - Status: <b>Auth</b>



**Figure 2**  
**RF Deck Left Side**



**Note #1**  
**Printed Circuit Board**  
**Inside Enclosure**

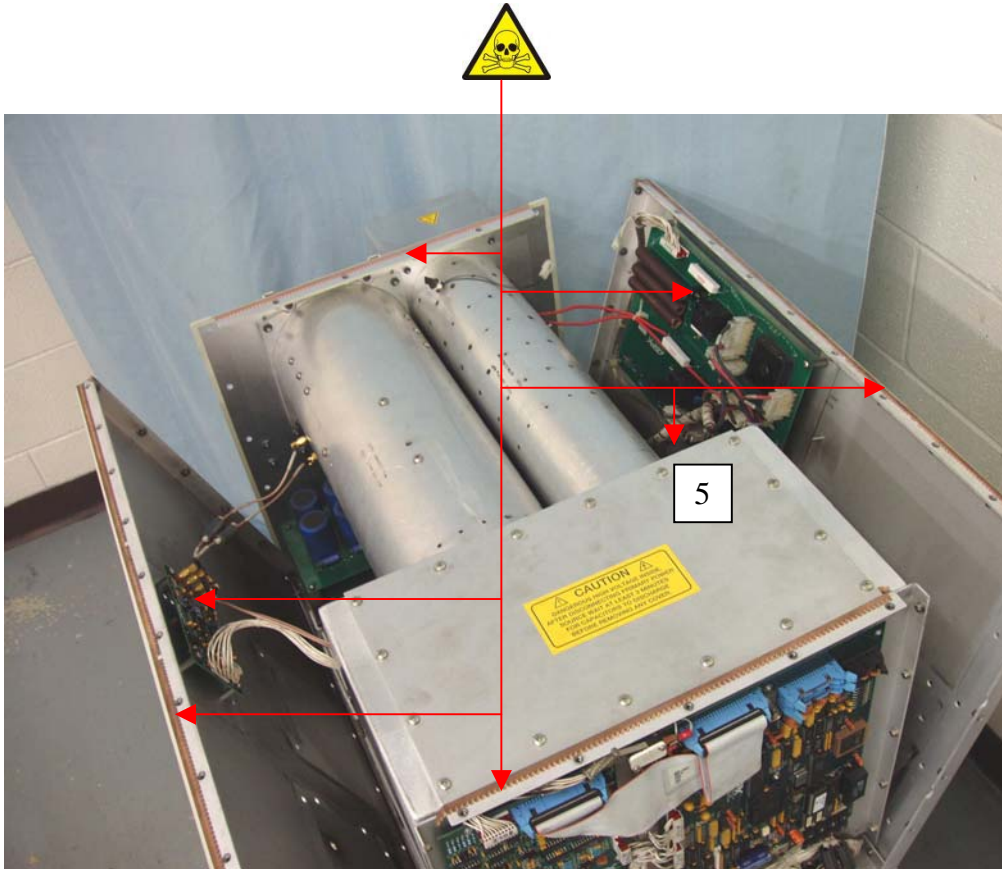


**Note #2**  
**Printed Circuit**  
**Board Opposite**  
**Side**

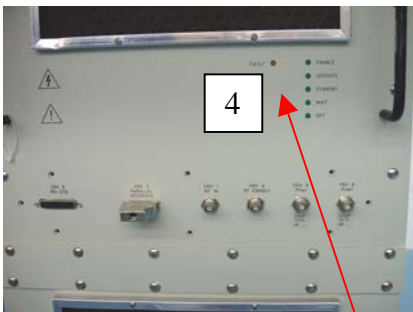


**Note #3**  
**Printed Circuit Board**  
**Inside Tube**

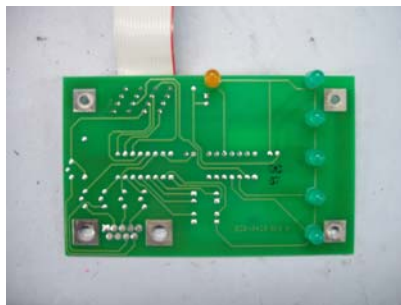
Name: <b>RF Amplifier, 15 KW, 64 Mhz</b>		12NC: <b>4522 131 4582x</b>	Version: <b>00</b> Doc.Date: <b>2006-08-03</b>
Author: <b>Michael Loucks</b>	Page <b>3</b> of <b>6</b>	Group No: <b>5790</b>	Section: <b>-</b> Status: <b>Auth</b>



**Figure 3**  
**RF Deck – Top View Sides Open**



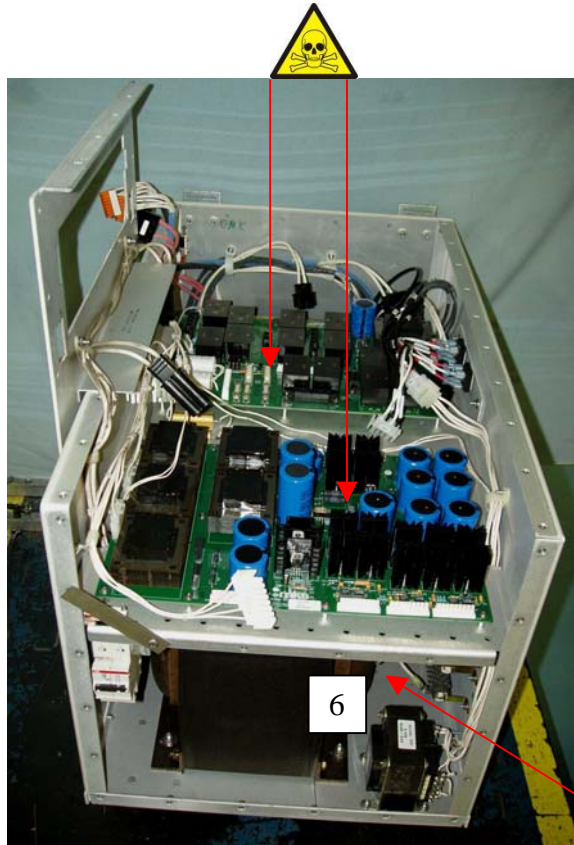
**Figure 4**  
**RF Deck Front Panel**



**Note #4**  
**Printed Circuit Board**



**Note #5**  
**Printed Circuit Board Inside Canister**



**Figure 5**  
**Power Supply Top / Front View (RF Deck Removed)**



**Note #6**  
**Capacitors Located In Right Rear**  
**Of Enclosure**



Name: <b>RF Amplifier, 15 KW, 64 Mhz</b>		12NC: <b>4522 131 4582x</b>	Version: <b>00</b>
Author: <b>Michael Loucks</b>		Group No: <b>5790</b>	Doc.Date: <b>2006-08-03</b>
Page <b>5</b> of <b>6</b>		Section: <b>-</b>	Status: <b>Auth</b>

### Recycling Passport Revision History

Revision	Description	Date
1	Initial version	2006-07-03

### Recycling Passport Approval Signatures

<b>Written By</b> Michael Loucks	<b>Reviewed By (optional)</b> Fred Saar
<b>Approved By</b> Rick Carpenter	<b>Approved By</b> Don Fowler

End of document.

Name: <b>RF Amplifier, 15 KW, 64 Mhz</b>		12NC: <b>4522 131 4582x</b>	Version: <b>00</b>
Author: <b>Michael Loucks</b>		Page <b>6</b> of <b>6</b>	Doc.Date: <b>2006-08-03</b>
		Group No: <b>5790</b>	Status: <b>Auth</b>