



PHILIPS

dS Shoulder 16ch

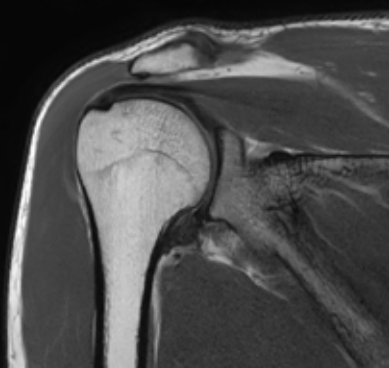
MR Coil

Designed for **high image quality**

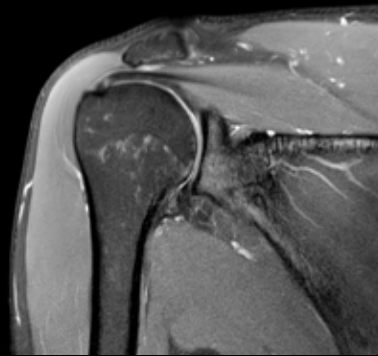
Coil designed for high image quality throughout the shoulder joint, with excellent penetration into the labrum. The coil consists of a base plate and an adjustable anterior part which can be raised and tilted for comfortable patient positioning. The coil can be positioned on the left or the right side of the table to scan the right or the left shoulder.

dS Shoulder 16ch

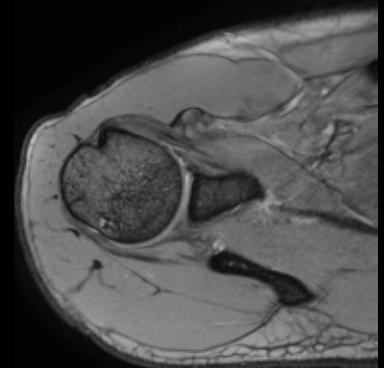
System configuration	1.5T systems with dStream.
Main applications	Shoulder.
Coverage	18 cm in LR direction.
Maximum nr. of channels	16.
Coil type	Dedicated.
Data sampling	dStream digital broadband.
Parallel imaging	dS SENSE enhanced parallel imaging performance.



Coronal PDw TSE
0.4 x 0.5 x 3.0 mm, 2:45 min
Ingenia 1.5T



Coronal PDw SPAIR
0.5 x 0.8 x 3.0 mm, 3:55 min
Ingenia 1.5T



Axial mFFE
0.5 x 0.6 x 3.0 mm, 3:39 min
Ingenia 1.5T