




Product name	- DACC 3T BRAZIL - LSP DACC 3T BRAZIL (WITHOUT RECON)
Identification code(s)	See list in below tabel / 4522 133 0896x(Basic cabinet)
Total weight [kg]	260 ± 20 kg
Manufacturer	Philips Medical Systems Nederland B.V.
Address	<i>Veenpluis 4-6 Best</i>
Zip code	5680DA
Country	The Netherlands
Electronic info	WEEE (LSP) DACC 3T Brazil


Recycling information

Special Attention 	1/ DACC2 Basic cabinet 4522 133 0896x	Special attention - NA
	Items: The following items have their own passport and are not part of this passport	Location
	2/ AIBo 4598 001 3851x	Figure 1 DACC(2)
	3/ Edge Core SWITCH 4598 002 0324x	Figure 1 DACC(2)
	4/ HOS 3T (only 3T cabinets) 4522 132 4457x	Figure 1 DACC(2)
	5a/ - HE RECON Z420 32GB PURCHASE BRAZIL 4598 005 5740x 5b/- MS RECON Z420 16GB PURCHASE BRAZIL 4598 005 8329x <i>Remark: LSP DACC cabinet does not have a Recon</i>	Figure 1 DACC(2)
	6/ - CDAS ASSY II 4598 000 1447x - CDAS ASSY III 4598 001 8930x	Figure 1 DACC(2)
	7/ - PMU 4535 673 9165x	Figure 1 DACC2
	8 -RF AMPLIFIER 3.0T MN 4535 670 7798x <i>Remark: MN-RF amplifier is optional</i>	Figure 1 DACC(2)

Batteries 	Items, type	Location
	Not applicable	

Hazardous substances 	Items	Location
	Additional panels added in slots CDAS	Figure 1 DACC(2)
	Panel: RX2 4522 117 9425x	Figure 1 DACC(2)
	Panel: RX3 4522 117 9533x	Figure 1 DACC(2)
	Panel: BULK HUB-2 4522 117 9878x	Figure 1 DACC(2)

Name: WEEE RECYCL.PASSPORT (LSP)DACC 3.0T BRAZIL		12NC: DMR206755		Version: 00 Doc.Date: 2014-05-23	
Author:		Page.: 1 of 4	Group No: 5790	Section: -	Status: Authorized

Hazardous substances	Items	Location
	Panel: RX SPLIT. 4535 671 3149x	Figure 1 DACC(2)
	Panel: BULK HUB IF 4535 670 3132	Figure 1 DACC(2)
	Panel: BULK HUB 4535 673 2185x	Figure 1 DACC(2)
Fluids and gases 	Items	Location
	Not applicable	

Name: WEEE RECYCL.PASSPORT (LSP)DACC 3.0T BRAZIL		12NC: DMR206755		Version: 00 Doc.Date: 2014-05-23	
Author:		Page.: 2 of 4	Group No: 5790	Section: -	Status: Authorized

Locations as mentioned in the Passport

1- DACC2 Basic cabinet

2 - AIBo

3 - HP SWITCH/
EDGE CORE SWITCH

4 - HOS 3T

5 - Z420 (MS/HE)




Remark: LSP DACC cabinet does not have a Recon

6 - CDAS

7 - PMU

8 -RF AMPLIFIER 3.0T MN
Remark: MN-RF amplifier is optional

CDAS-PANELS
-RX2
-RX3
-RX SPLIT.
-BULK HUB-2
-BULK HUB IF
-BULK HUB



Mains Inlet unit part of DACC(2) basic cabinet

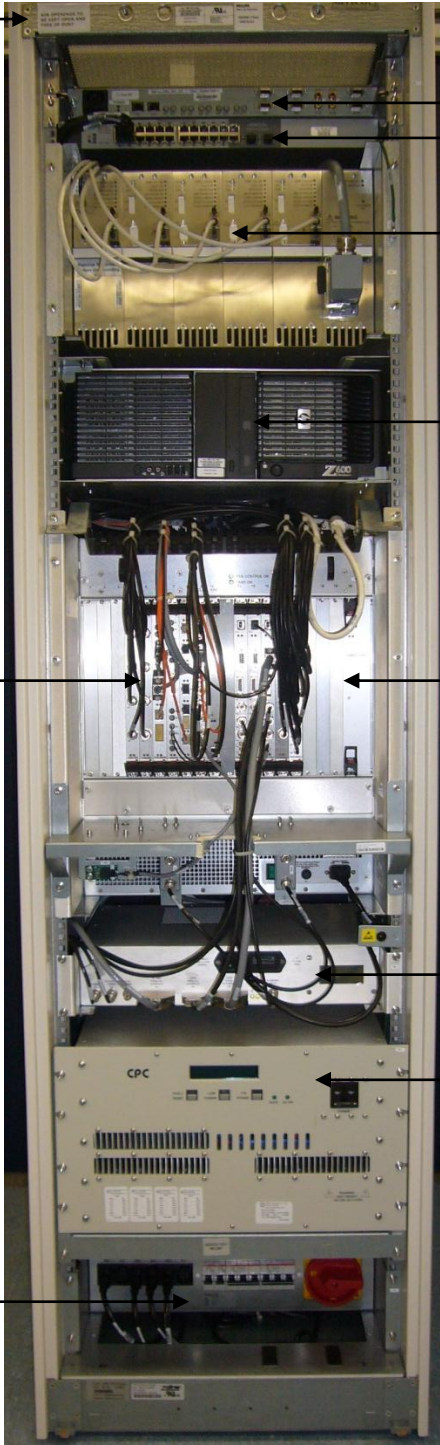


Figure 1 Frontview DACC2 cabinet

Name: WEEE RECYCL.PASSPORT (LSP)DACC 3.0T BRAZIL		12NC: DMR206755	Version: 00 Doc.Date: 2014-05-23
Author:	Page.: 3 of 4	Group No: 5790	Section: -
Status: Authorized			Template version 2.

Identification codes

9896-030-2707x	LSP DACC 3.0T-IRF-BRAZIL
9896-030-2787x	LSP DACC-16CH-3T-TX-BRAZIL
9896-030-2788x	LSP DACC-32CH-3T-TX-BRAZIL
9896-030-2800x	DACC-Z420HE-32GB-3.0T-IRF-BRAZIL
9896-030-2791x	DACC-16CH-Z420HE-3T-TX-BR
9896-030-2792x	DACC-32CH-Z420HE-3T-TX-BR

Name: WEEE RECYCL.PASSPORT (LSP)DACC 3.0T BRAZIL		12NC: DMR206755		Version: 00 Doc.Date: 2014-05-23	
Author:		Page.: 4 of 4	Group No: 5790	Section: -	Status: Authorized