
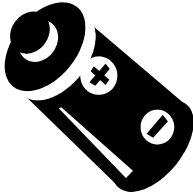




Product name	XW6200 Reconstructor/ AE computer
Identification code(s)	4522 132 4545x 4522 132 4544x 4522 132 5682x
Total weight [kg]	16 kg
Manufacturer	Hewlett Packard
Address	Orteliuslaan 1000
Zip code	3528 BD Utrecht
Country	The Netherlands
Electronic info	

Recycling information

Special Attention	Items	Location
	None	

Batteries	Items, type	Location
	Lithium battery type CR2032 (3V)	Figure 1

Hazardous substances	Items	Location
	Printed Circuit Boards (PCB) two in the PSU with a surface greater than 10 square cm	Figure 2
	Printed Circuit Boards (PCB) systemboard (motherboard) with a surface greater than 10 square cm	Figure 1
	Printed Circuit Boards (PCB) maximal 6 add-in cards (PCI) with a surface greater than 10 square cm	Figure 3
	Printed Circuit Boards (PCB) maximal 4 add-in cards (memory) with a surface greater than 10 square cm	Figure 1
	Four attached to the power supply PCB cards. Electrolytic capacitors / condensers that measure greater than 2.5 cm in diameter or height	Figure 2

Fluids and gases	Items	Location
	None	

Name:	WEEE passport Recon/AE computer XW6200	12NC:	4522 132 45450	Version: 00
Author:		Group No: 5790	Section: -	Doc.Date: 2006-08-07
	Pag.: 1 of 3			Status: Authorized

Locations as mentioned in the Passport (Information in pictures)

Place sketch(es) or photo(s) here, and indicate issues using icons:

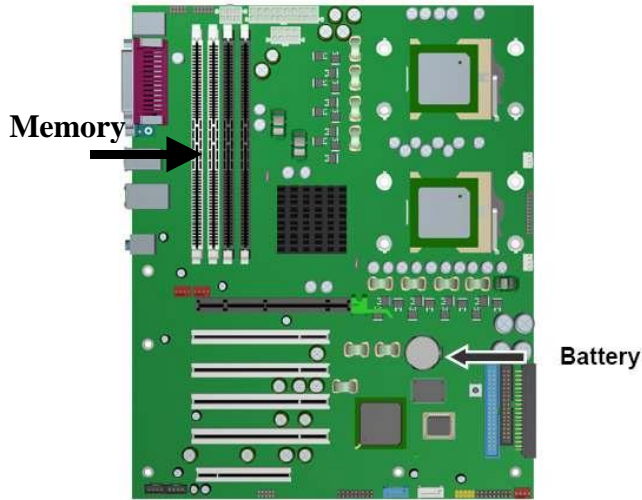


Figure 1a

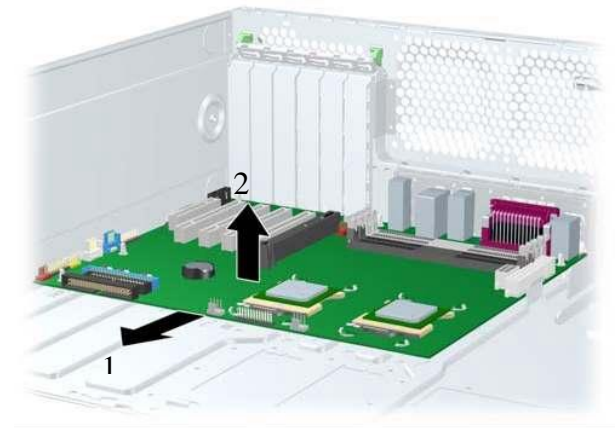


Figure 1b

Remove the system battery. Press on the release tab of the battery holder. Rotate the battery beyond the latch and lift it straight up.

Remove the system board. Slide the board forward 1 to disengage the mounting standoffs from the chassis. Lift the board out of the chassis 2.



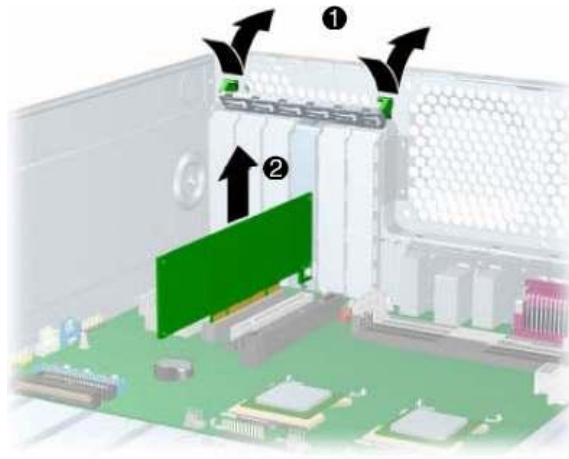
Figure 2a



Figure 2b

Ensure that all capacitors are safely discharged. Use a diagonal cutter to remove the desired components from both PCB cards. (Note that some components may need to be unsoldered if a diagonal cutter does not fit between the component and the PCB card.)

Name:	WEEE passport Recon/AE computer XW6200	12NC:	4522 132 45450	Version: 00
Author:		Pag.: 2 of 3	Group No: 5790	Doc.Date: 2006-08-07
			Section: -	Status: Authorized



PCI Card

Figure 3

Remove the PCI retainer by pressing down on it, then out 1. Lift the PCI card out of the chassis 2.

Name:	WEEE passport Recon/AE computer XW6200	12NC:	4522 132 45450	Version: 00
Author:		Pag.: 3 of 3	Group No: 5790	Doc.Date: 2006-08-07
			Section: -	Status: Authorized